

# Essentials

Volume 5



**Castle**



## Trans Can Imports

celebrating  
**50**  
YEARS OF  
Partnership

### Edmonton

8157 Wagner Road NW  
Edmonton, Alberta T6E 4N6  
Phone 780-465-0126  
Fax 780-465-0174

**Toll Free Order** 1 800 661 9438

### Richmond

#6, 14231 Burrows Road  
Richmond, BC V6V 1K9  
Phone 604-278-6221  
Fax 604-278-6224

**Toll Free Fax** 1 800 567 3210

[www.transcanimports.com](http://www.transcanimports.com)

# TECH INDEX



Soft-Touch polyester shell construction



3-in-1 Soft-Touch polyester shell construction with wearable liner



High-Tenacity Nylon shell



Kevlar<sup>®</sup> reinforced knee panels



500D Airdura<sup>®</sup> reinforcements



High performance non-insulated shell



Insulated removable liner



Windproof, waterproof, breathable shell construction



DWR (Durable Water Repellent) coated shell repels water & stains



Water resistant PU coating



Critical seams sealed



Double stitched seams



Taped seams



VENTEC<sup>®</sup> zippered ventilation



Comfort-Flow<sup>™</sup> polyester mesh lined shell



Micro fleece lined



Integrated goggle wipe in chest pocket



Internal hand gaiters



360° elastic cuffs



Shockcord adjustable waist, hem and/or gauntlet



Magnetic closures on front placket



Velcro<sup>®</sup> closures



YKK<sup>®</sup> zippers



3M<sup>™</sup> Scotchlite<sup>™</sup> Reflective piping/elements



Removable stretch powder skirt



Attached powder skirt



Inner snow gaiters attach to boots



Precurved seat with action back raised rear panels



Dual action chamber gussets for increased mobility



Articulated knee with gusseted flex panels



360° adjustable length feature



Total number of both internal and external pockets



Waterproof cargo pocket



Removable number bib



Oversize fit allows for use of protective vests & knee braces



Drop back design



Multi-Stage rechargeable heated glove with On/Off button



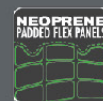
Soft, durable, water resistant Pittards<sup>™</sup> leather



Full leather palm



Double layered micro fiber palm



Neoprene padded wrist gauntlet



Protection on fingers and knuckles



Precurved fingers and/or palm



Synthetic non-slip reinforced palm and thumb



Silicone tabbed finger tips for increased grip



Supersoft Bemberg lining



Ladder lock wrist closure



# WATERPROOFING & INSULATION

## VEN-TEX<sup>®</sup> WATERPROOFING

## WATERPROOF/BREATHABLE COATINGS & MATERIALS



3.0

### FREE HANGING MEMBRANE

- Advanced, lightweight free hanging membrane enhances any cold climate outdoor wear's comfort level.
- Highly breathable construction is also extremely wind and water resistant.

2.0

### LAMINATE

- Innovative technology developed exclusively for cold climate outdoor active sports.
- Hi-Tech, ultra-thin hydrophilic membrane is bonded to the inside of the fabric.
- Superior comfort is generated through a high resistance to wind and water and excellent transmission of perspiration.

1.0

### COATING

- Durable thin coating applied to inside of fabric.
- Fabric maintains a soft touch while active comfort is enhanced by generating excellent windproof/waterproof/breathable performance.

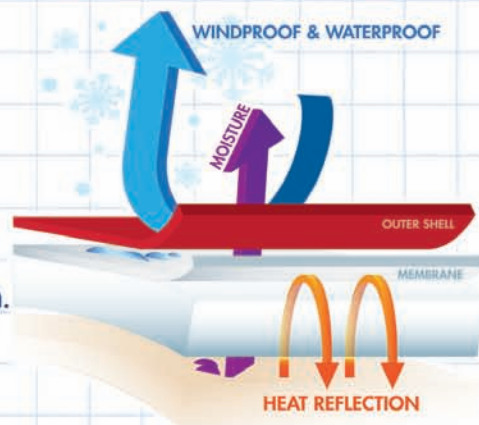
VEN-TEX<sup>®</sup> is a superior range of windproof, waterproof and breathable garment treatments. Providing the user with increased comfort and durable protection in cold weather conditions.



## MEMBRANE TECHNOLOGY

The ultimate luxury insulation for active outdoor apparel.

- VEN-TEX<sup>®</sup> 3.0 membrane is attached to **COLD SHIELD PLUS** insulation.
- The membrane traps additional heat in the insulation while allowing moisture to escape.
- Creates a lighter, softer feel by reducing the amount of needed insulation.
- Highly flexible with great fiber memory.
- Virtually eliminates insulation migration.



## MULTI-LAYER FIBERFILL



- Multi-layer construction creates high insulating value with low weight.
- Specific micro-fibers are blended to allow for a comfortable soft and light feel.
- Soft sheets of fiberfill are stacked to enhance comfort by creating additional heat trapping pockets that improves the insulating ability.
- Excellent low-bulk feel that is perfect for today's cold weather outdoor active wear.
- Reduced compression characteristics.
- Water repellent and fast drying.



## ULTRA-SOFT FIBERFILL

- Ultra-soft, lightweight hollow core fiber-fill insulation.
- Superior at trapping warm air for increased insulating properties while maintaining a light feel with durable performance.
- Water repellent and fast drying.

**3M****Thinsulate™**  
INSULATION

# Why 3M?

## The Science of Warmth 101

### Simple tips to combat the cold with 3M™ Thinsulate™ Insulation

Low temperatures typically mean bundling up with large sweaters and bulky jackets or spending less time enjoying the outdoors. But while it's common to assume that thicker garments equal greater comfort and protection from frigid temperatures, it's important to look deeper into the science of warmth before deciding what to wear when venturing out into the cold.

As an industry leader in warmth technology, 3M recognizes the nuances of heat and understands how advanced technologies can combat the cold and protect the body against the elements. Here is a quick guide to understanding warmth and how 3M™ Thinsulate™ Insulation is the right choice to keep you warm:

### How does your body use and lose heat?

When thinking about heat loss, it is important to remember that heat loss is affected by:

- Body temperature
- Activity Level
- Outside air temperature and wind speed
- Distances between the insulation fibers
- Thickness of insulation
- Fiber size

The insulation required by an individual to maintain comfort is markedly affected by activity level. This factor must be considered when choosing a garment for a particular activity.

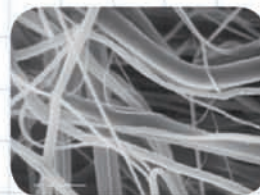
### What is the best way to stay warm?

Thermal comfort is achieved by balancing three factors:

- Rate of heat production by your body
- Insulation value of your clothing (clo)
- Environmental temperature

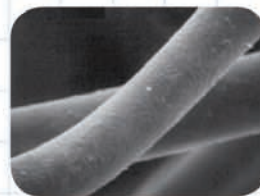
Of those three, it's easiest to alter the insulation value of your clothing. To do this, we need to understand how insulation works. First, insulation traps air. The more air trapped, the more efficient the insulation. Second, insulation helps block the body's radiant heat loss.

The unique microfibers of Thinsulate insulation are up to about 5 times smaller than the fibers of many other common synthetic insulations, which means they're much more efficient at trapping air and more effective at keeping you warm – all while reducing the bulk of the garment.



3M™ Thinsulate™ Insulation

The fibers of 3M™ Thinsulate™ Insulation are exceedingly fine, making them ideal for trapping insulating air and helping block the body's radiant heat loss.



6-denier hollow fiber

The fibers in 6-denier polyester are much thicker and not nearly as efficient at trapping air or reflecting back body heat.

### What are the best options when looking for apparel to keep me warm?

When compared to other insulations of equal thickness, Thinsulate insulation provides about 1 ½ times the warmth of down and up to twice the warmth of other high-loft insulations. In addition, it's hypoallergenic, odorless, breathable, durable and easily dried, which makes it a simple choice.



# CALIBER JACKET



Red Plaid



Black



Billy Bob



## CALIBER JACKET

\*For 3XL Pricing Add \$20.00

	SML	MED	LRG	XLG	2XL	*3XL
JACKET SIZE	40	42	44	46	48	52
Red Plaid	488-0042	488-0044	488-0046	488-0048	488-0049	---
Billy Bob	C72-0232	C72-0234	C72-0236	C72-0238	C72-0239	C72-0239T
Black	488-0012	488-0014	488-0016	488-0018	488-0019	488-0019T
<b>SHORT SIZES</b>	* Short sizes are designed to fit a body 53" - 57", with a short torso and sleeve length. The torso length is 2" shorter and sleeves are 2 1/2" shorter than the regular sizes.					
SHORT BLACK	---	---	488-0016S	488-0018S	488-0019S	---

\$365.95  
 \$365.95  
 \$349.95  
 \$349.95

### TECHNICAL FEATURES





# SURGE SE PARKA



• MENS •



Slider Black



Slider Blue



All That



Tracer

## SURGE SE PARKA

\$309.95 / 3XL - \$329.95

	SML	MED	LRG	XLG	2XL	3XL
JACKET SIZE	40	42	44	46	48	52
Slider Blue	C70-0602	C70-0604	C70-0606	C70-0608	C70-0609	C70-0609T
Slider Black	C70-0612	C70-0614	C70-0616	C70-0618	C70-0619	C70-0619T
All That	C70-0622	C70-0624	C70-0626	C70-0628	C70-0629	C70-0629T
Tracer	C70-0652	C70-0654	C70-0656	C70-0658	C70-0659	C70-0659T

\* New Pattern Available

## Powder Series



### TECHNICAL FEATURES





# SURGE PARKA



White



Gray/Orange



Red



## SURGE PARKA

\$299.95 / 3XL \$319.95

	SML	MED	LRG	XLG	2XL	3XL
JACKET SIZE	40	42	44	46	48	52
Red	C70-0412	C70-0414	C70-0416	C70-0418	C70-0419	C70-0419T
Gray/Orange	C70-0462	C70-0464	C70-0466	C70-0468	C70-0469	C70-0469T
White	C70-0592	C70-0594	C70-0596	C70-0598	C70-0599	C70-0599T
Hi-Vis	C70-0532	C70-0534	C70-0536	C70-0538	C70-0539	C70-0539T
Kelly Green	C70-0542	C70-0544	C70-0546	C70-0548	C70-0549	C70-0549T
Dark Gray/Hi-Vis	C70-0552	C70-0554	C70-0556	C70-0558	C70-0559	C70-0559T
Gray/Reflex Blue	C70-0562	C70-0564	C70-0566	C70-0568	C70-0569	C70-0569T
Black/Yellow	C70-0572	C70-0574	C70-0576	C70-0578	C70-0579	C70-0579T
Orange	C70-0582	C70-0584	C70-0586	C70-0588	C70-0589	C70-0589T

\* New Colors Available

## Powder Series



### TECHNICAL FEATURES



# SURGE PARKA



Hi-Vis



Kelly Green



Dark Gray/Hi-Vis



Gray/Reflex Blue



Black/Yellow



Orange



**Powder Series**





# CHARGE G2W JACKET



Red



### Powder Series



Yellow



Green



Dark Orange



Black



Mission Gray SE

CHARGE G2 WHITE JACKET		\$319.95 / 3XL - \$329.95				
JACKET SIZE	SML	MED	LRG	XLG	2XL	3XL
Red	C70-9212	C70-9214	C70-9216	C70-9218	C70-9219	C70-9219T
Yellow	C70-9232	C70-9234	C70-9236	C70-9238	C70-9239	C70-9239T
Green	C70-9242	C70-9244	C70-9246	C70-9248	C70-9249	C70-9249T
Dark Orange	C70-9262	C70-9264	C70-9266	C70-9268	C70-9269	C70-9269T
Black	C70-9272	C70-9274	C70-9276	C70-9278	C70-9279	C70-9279T
Mission Gray SE	C70-0212	C70-0214	C70-0216	C70-0218	C70-0219	C70-0219T



### TECHNICAL FEATURES





# CHARGE G2B JACKET



5 • MENS



Red



Hi Vis

Black



Blue



Yellow



Green



Dk. Orange

## CHARGE G2 BLACK JACKET

\$319.95 / 3XL-5XL - \$329.95

JACKET SIZE	SML	MED	LRG	XLG	2XL	3XL	4XL	5XL
Red	C70-0112	C70-0114	C70-0116	C70-0118	C70-0119	---	---	---
Blue	C70-0122	C70-0124	C70-0126	C70-0128	C70-0129	---	---	---
Yellow	---	C70-0134	C70-0136	C70-0138	C70-0139	---	---	---
Green	C70-0142	C70-0144	C70-0146	C70-0148	C70-0149	---	---	---
Dk Orange	C70-0182	C70-0184	C70-0186	C70-0188	C70-0189	---	---	---
Hi-Vis	C70-9352	C70-9354	C70-9356	C70-9358	C70-9359	---	---	---
Black	---	C70-0174	C70-0176	C70-0178	C70-0179	C70-0179T	C70-0179X	C70-0179Z



Black  
4XL and 5XL

\* New Pattern Available

### TECHNICAL FEATURES





# CORE SE JACKET



Shady

## CORE SE JACKET

\$274.95 / 3XL - \$294.95

	XSM	SML	MED	LRG	XLG	2XL	3XL
JACKET SIZE	38	40	42	44	46	48	52
Epic	C70-1011	C70-1012	C70-1014	C70-1016	C70-1018	C70-1019	C70-1019T
Chopper	C70-1021	C70-1022	C70-1024	C70-1026	C70-1028	C70-1029	C70-1029T
Jethro	C70-1031	C70-1032	C70-1034	C70-1036	C70-1038	C70-1039	C70-1039T
Shady	--	C70-1042	C70-1044	C70-1046	C70-1048	C70-1049	--
Template	--	C70-1052	C70-1054	C70-1056	C70-1058	C70-1059	--
<b>Backwoods</b>	--	<b>C70-1062</b>	<b>C70-1064</b>	<b>C70-1066</b>	<b>C70-1068</b>	<b>C70-1069</b>	<b>C70-1069T</b>

\* New Pattern Available • Also Available in Youth Sizes

### TECHNICAL FEATURES





**new**

Backwoods



Chopper



Jethro



Tracer



Epic



# CORE JACKET



MENS



Lime



Blue



Black



Dk Orange

## CORE JACKET \$249.95 / 3XL - \$269.95

	XSM	SML	MED	LRG	XLG	2XL	3XL
JACKET SIZE	38	40	42	44	46	48	52
Blue	C70-0821	C70-0822	C70-0824	C70-0826	C70-0828	C70-0829	-
Lime	-	C70-0842	C70-0844	C70-0846	C70-0848	C70-0849	-
Black	C70-0871	C70-0872	C70-0874	C70-0876	C70-0878	C70-0879	C70-0879T
Dk. Orange	-	C70-0882	C70-0884	C70-0886	C70-0888	C70-0889	-

### TECHNICAL FEATURES



# LAUNCH SE G2 JACKET



Hi-Vis/Black



Blue/Hi-Vis



Blue/Dk Org



Flo Orange

## LAUNCH SE G2 JACKET \$269.95 / 3XL - \$289.95

	SML	MED	LRG	XLG	2XL	3XL
JACKET SIZE	40	42	44	46	48	52
Blue/Hi-Vis	C70-9022	C70-9024	C70-9026	C70-9028	C70-9029	C70-9029T
Hi-Vis/Black	C70-9042	C70-9044	C70-9046	C70-9048	C70-9049	C70-9049T
Flo. Orange	C70-9052	C70-9054	C70-9056	C70-9058	C70-9059	C70-9059T
Blue/Dk Orange	C70-9062	C70-9064	C70-9066	C70-9068	C70-9069	C70-9069T

### TECHNICAL FEATURES





# LAUNCH JACKET



Blue



Yellow



Green



Dk Org



Red

## LAUNCH JACKET

\$239.95 / 3XL - \$259.95

	SML	MED	LRG	XLG	2XL	3XL
JACKET SIZE	40	42	44	46	48	52
Red	C70-4412	C70-4414	C70-4416	C70-4418	C70-4419	C70-4419T
Blue	C70-4422	C70-4424	C70-4426	C70-4428	C70-4429	C70-4429T
Yellow	C70-4432	C70-4434	C70-4436	C70-4438	C70-4439	C70-4439T
Green	C70-4442	C70-4444	C70-4446	C70-4448	C70-4449	C70-4449T
Dk Orange	C70-4482	C70-4484	C70-4486	C70-4488	C70-4489	C70-4489T

Also Available in Womens, Youth & Toddler Sizes

### TECHNICAL FEATURES





# LAUNCH G2 JACKET



5 • MENS



Yellow



Red



Blue



Black



Green

## LAUNCH G2 JACKET

\$269.95 / 3XL-4XL - \$289.95

	SML	MED	LRG	XLG	2XL	3XL	4XL
JACKET SIZE	40	42	44	46	48	52	54
Red	C70-9112	C70-9114	C70-9116	C70-9118	C70-9119	C70-9119T	---
Blue	C70-9122	C70-9124	C70-9126	C70-9128	C70-9129	C70-9129T	---
Yellow	C70-9132	C70-9134	C70-9136	C70-9138	C70-9139	C70-9139T	---
Green	C70-9142	C70-9144	C70-9146	C70-9148	C70-9149	C70-9149T	---
Black	C70-9172	C70-9174	C70-9176	C70-9178	C70-9179	C70-9179T	C70-9179X

Also Available in Youth Sizes

### TECHNICAL FEATURES







# BOLT G2B JACKET



Yellow



Red



Green



Dark Orange



Black

## BOLT G2 BLACK JACKET \$249.95 / 3XL-5XL - \$269.95

JACKET SIZE	SML	MED	LRG	XLG	2XL	3XL	4XL	5XL
Red	C70-8812	C70-8814	C70-8816	C70-8818	C70-8819	C70-8819T	-	-
Yellow	C70-8832	C70-8834	C70-8836	C70-8838	C70-8839	C70-8839T	-	-
Green	C70-8842	C70-8844	C70-8846	C70-8848	C70-8849	C70-8849T	-	-
Dark Orange	C70-8862	C70-8864	C70-8866	C70-8868	C70-8869	C70-8869T	-	-
Black	C70-8872	C70-8874	C70-8876	C70-8878	C70-8879	C70-8879T	C70-8879X	C70-8879Z

### TECHNICAL FEATURES





# BOLT REALTREE® G2B JACKET



5 • MENS •



**REALTREE®**  
Licensed Product



Dk. Orange Camo



Pulse Yellow



Pulse Green

## BOLT REALTREE® & BOLT SE JACKET

	SML	MED	LRG	XLG	2XL	3XL	4XL
JACKET SIZE	40	42	44	46	48	52	56
Dk. Orange Camo	C70-8882	C70-8884	C70-8886	C70-8888	C70-8889	C70-8889T	C70-8889Z
Pulse Yellow	C70-1632	C70-1634	C70-1636	C70-1638	C70-1639	C70-1639T	-
Pulse Green	C70-1642	C70-1644	C70-1646	C70-1648	C70-1649	C70-1649T	-

Camo - \$274.95 / 3XL- 4XL - \$294.95

Pulse - \$249.95 / 3XL - \$269.95

### TECHNICAL FEATURES





# SCOUT JACKET



Red



Green



Gray



Dk Orange

## SCOUT JACKET

	SML	MED	LRG	XLG	2XL	3XL
JACKET SIZE	40	42	44	46	48	52
Red	C70-3912	C70-3914	C70-3916	C70-3918	C70-3919	C70-3919T
Green	C70-3942	C70-3944	C70-3946	C70-3948	C70-3949	C70-3949T
Gray	C70-3962	C70-3964	C70-3966	C70-3968	C70-3969	C70-3969T
Dk Orange	C70-3982	C70-3984	C70-3986	C70-3988	C70-3989	C70-3989T
Realtree®	C70-3992	C70-3994	C70-3996	C70-3998	C70-3999	C70-3999T

\* New Pattern Available

Realtree Camo - \$269.95 / 3XL - \$289.95  
 Solids - \$239.95 / 3XL - \$259.95

### TECHNICAL FEATURES





# BLADE JACKET



5 • MENS •



Red



Yellow



Green



Black

## BLADE JACKET \$214.95 / 3XL - \$234.95

	SML	MED	LRG	XLG	2XL	3XL
JACKET SIZE	40	42	44	46	48	52
Red	C70-8512	C70-8514	C70-8516	C70-8518	C70-8519	C70-8519T
Yellow	C70-8532	C70-8534	C70-8536	C70-8538	C70-8539	C70-8539T
Green	C70-8542	C70-8544	C70-8546	C70-8548	C70-8549	C70-8549T
Black	C70-8572	C70-8574	C70-8576	C70-8578	C70-8579	C70-8579T

### TECHNICAL FEATURES





# PLATFORM JACKET

MENS



Yellow



Red



Blue



Green



Black

## PLATFORM JACKET

\$130.95 / 3XL-4XL - \$140.95

	SML	MED	LRG	XLG	2XL	3XL	4XL
JACKET SIZE	40	42	44	46	48	52	56
Red	C70-4912	C70-4914	C70-4916	C70-4918	C70-4919	C70-4919T	--
Blue	C70-4922	C70-4924	C70-4926	C70-4928	C70-4929	C70-4929T	--
Yellow	C70-4932	C70-4934	C70-4936	C70-4938	C70-4939	C70-4939T	--
Green	C70-4942	C70-4944	C70-4946	C70-4948	C70-4949	C70-4949T	--
Black	C70-4972	C70-4974	C70-4976	C70-4978	C70-4979	C70-4979T	C70-4979X

### TECHNICAL FEATURES



# FUEL G5 BLACK PANT



FUEL G5B PANT		\$199.95 / 3XL - \$219.95					
	XSM	SML	MED	LRG	XLG	2XL	3XL
WAIST	28-30	30-32	32-34	34-36	36-38	38-40	40-43
Red	C73-5111	C73-5112	C73-5114	C73-5116	C73-5118	C73-5119	--
Blue	C73-5121	C73-5122	C73-5124	C73-5126	C73-5128	C73-5129	--
Yellow	C73-5131	C73-5132	C73-5134	C73-5136	C73-5138	C73-5139	--
Green	C73-5141	C73-5142	C73-5144	C73-5146	C73-5148	C73-5149	--
Hi-Vis	C73-5151	C73-5152	C73-5154	C73-5156	C73-5158	C73-5159	--
Dk Orange	C73-5161	C73-5162	C73-5164	C73-5166	C73-5168	C73-5169	--
Black	C73-4271	C73-4272	C73-4274	C73-4276	C73-4278	C73-4279	--
MENS SHORT (INSEAM)				32	32	32	
Black	--	--	--	C73-4276S	C73-4278S	C73-4279S	--
MENS TALL (INSEAM)				37	37		
Black	--	--	--	C73-4276T	C73-4278T	--	--
SHOULDER STRAP KIT	XSM-SML		MED-XLG	2XL-3XL			
Black	473-9991		473-9992	473-9993			\$29.95

## TECHNICAL FEATURES





# FUEL G5

REALTREE® & WHITE PANT



Flo Orange /White

Black / White



Red/White



Realtree®



## FUEL G5W & REALTREE® PANT

	XSM	SML	MED	LRG	XLG	2XL	3XL
CAMO - WAIST	28-30	30-32	32-34	34-36	36-38	38-40	40-43
Realtree	C73-5181	C73-5182	C73-5184	C73-5186	C73-5188	C73-5189	—
SOLID - WAIST	28-30	30-32	32-34	34-36	36-38	38-40	40-43
Red/White	C73-5011	C73-5012	C73-5014	C73-5016	C73-5018	C73-5019	—
Flo Org/White	C73-5051	C73-5052	C73-5054	C73-5056	C73-5058	C73-5059	—
Black/White	C73-5071	C73-5072	C73-5074	C73-5076	C73-5078	C73-5079	C73-5079T
SHOULDER STRAP KIT	XSM-SML	MED-XLG	2XL-3XL				
Black	473-9991	473-9992	473-9993				\$29.95

Realtree Camo - \$235.95 / 3XL - \$255.95  
 Solids - \$199.95 / 3XL - \$219.95

### TECHNICAL FEATURES





# SURGE PANT



Black



Optional Strap Kit



Reflex Blue

Red



Lime

Gray

Orange

## SURGE PANT

All Sizes - \$249.95

	SML	MED	LRG	XLG	2XL
WAIST/INSEAM	30/32	32/33	34/34	36/34	40/34
Red	C73-4112	C73-4114	C73-4116	C73-4118	C73-4119
Lime	C73-4142	C73-4144	C73-4146	C73-4148	C73-4149
<b>Reflex Blue</b>	<b>C73-4152</b>	<b>C73-4154</b>	<b>C73-4156</b>	<b>C73-4158</b>	<b>C73-4159</b>
Gray	C73-4162	C73-4164	C73-4166	C73-4168	C73-4169
Black	C73-4172	C73-4174	C73-4176	C73-4178	C73-4179
Orange	C73-4182	C73-4184	C73-4186	C73-4188	C73-4189
MENS SHORT (INSEAM)			32	32	32
Black Short	--	--	C73-4176S	C73-4178S	C73-4179S
SHOULDER STRAP KIT	SML	MED-XLG		2XL	
Black	473-9991	473-9992		473-9993	\$29.95

\* New Color Available



## Powder Series

### TECHNICAL FEATURES







# FACTOR BIB



## FACTOR BIB

\$319.95 / 3XL - \$329.95

	SML	MED	LRG	XLG	2XL	3XL
WAIST/INSEAM	30/32	32/33	34/34	36/34	40/34	44/34
Mens	487-0022	487-0024	487-0026	487-0028	487-0029	487-0029T
WAIST/INSEAM	40/32					
Mens Short	--	--	--	--	487-0029S	--

Also Available in Womens Sizes

### TECHNICAL FEATURES



# RIZER WAIST BIB



## RIZER WAIST BIB

\$229.95 / 3XL - \$239.95

	SML	MED	LRG	XLG	2XL	3XL
WAIST/INSEAM	30/32	32/33	34/34	36/34	40/34	44/34
Mens	473-2112	473-2114	473-2116	473-2118	473-2119	473-2219T
WAIST/INSEAM			34/32	36/32	40/32	44/32
Mens Short	--	--	473-2116S	473-2118S	473-2119S	473-2219TS
WAIST/INSEAM			34/37	36/37		
Mens Tall	--	--	473-2116T	473-2118T	--	--

Also Available in Womens Sizes

### TECHNICAL FEATURES



CR2  
BIB



**CR2 BIB**

\$179.95 / 3XL-4XL - \$199.95

	SML	MED	LRG	XLG	2XL	3XL	4XL
WAIST/INSEAM	30/32	32/33	34/34	36/34	40/34	44/34	48/34
Mens	473-2212	473-2214	473-2216	473-2218	473-2219	473-2219T	473-2219X
WAIST/INSEAM			34/32	36/32	40/32	44/32	
Mens Short	--	--	473-2216S	473-2218S	473-2219S	473-2219TS	--
WAIST/INSEAM			34/37	36/37			
Mens Tall	--	--	473-2216T	473-2218T	--	--	--

*Also Available in Womens & Youth Sizes*

**TECHNICAL FEATURES**



**PLATFORM  
G2 BIB**



**PLATFORM G2 BIB**

\$119.95 / 3XL - \$129.95

	SML	MED	LRG	XLG	2XL	3XL
WAIST/INSEAM	30/32	32/33	34/34	36/34	40/34	44/34
Mens	473-2412	473-2414	473-2416	473-2418	473-2419	473-2419T

*Also Available in Womens Sizes*

**TECHNICAL FEATURES**





# CALIBER JACKET

## Women's



Black



Blossom



White



### CALIBER JACKET \$329.95

	XSM	SML	MED	LRG	XLG	2XL
JACKET SIZE	0-2	4-6	8-10	12-14	16-18	18-20
Black	489-0071	489-0072	489-0074	489-0076	489-0078	489-0079
Blossom	--	489-0202	489-0204	489-0206	489-0208	489-0209
White	--	489-0192	489-0194	489-0196	489-0198	489-0199

#### TECHNICAL FEATURES





# Women's CHARGE G2 JACKET



WOMEN'S



Yellow

Black

Magenta

Hi-Vis



CHARGE G2 JACKET		\$319.95					
	XSM	SML	MED	LRG	XLG	2XL	
JACKET SIZE	0-2	4-6	8-10	12-14	16-18	18-20	
Yellow	C72-2731	C72-2732	C72-2734	C72-2736	C72-2738	C72-2739	
Black	C72-2771	C72-2772	C72-2774	C72-2776	C72-2778	C72-2779	
Magenta	C72-2801	C72-2802	C72-2804	C72-2806	C72-2808	C72-2809	
Hi-Vis	C72-2841	C72-2842	C72-2844	C72-2846	C72-2848	C72-2849	

## TECHNICAL FEATURES





# BLISS SE *Women's* JACKET



Hottie



Crystal



## BLISS SE JACKET \$299.95 / Oversize \$319.95

JACKET SIZE	SML	MED	LRG	XLG	2XL
JACKET SIZE	4-6	8-10	12-14	16-18	18-20
Hottie	C70-2212	C70-2214	C70-2216	C70-2218	C70-2219
Crystal	C70-2222	C70-2224	C70-2226	C70-2228	C70-2229
Reflex Blue Crush	C72-3022	C72-3024	C72-3026	C72-3028	C72-3029
Violet Crush	C72-3032	C72-3034	C72-3036	C72-3038	C72-3039
Orange Crush/Gray	C72-3052	C72-3054	C72-3056	C72-3058	C72-3059
Smoke	C72-3062	C72-3064	C72-3066	C72-3068	C72-3069
Black Crush/Hi-Vis	C72-3072	C72-3074	C72-3076	C72-3078	C72-3079
Dark Gray Crush	C72-3082	C72-3084	C72-3086	C72-3088	C72-3089
Magenta Crush	C72-3092	C72-3094	C72-3096	C72-3098	C72-3099

### PLUS SIZES

JACKET SIZE	1W	2W	3W
JACKET SIZE	16-18*	20-22*	24-26*
Smoke	C72-3068W	C72-3069W	C72-3069Y

\* New Patterns Available

### TECHNICAL FEATURES



# BLISS SE JACKET



Reflex Blue Crush



Violet Crush



Orange Crush/Gray



AVAILABLE IN  
Plus Sizes

Smoke



Black Crush/Hi-Vis



Dk Gray Crush



Magenta Crush





# BLISS *Women's* JACKET



WOMEN'S



White/Black



AVAILABLE IN Plus Sizes

Magenta



Grape



White/Magenta

BLISS JACKET		\$279.95 / Oversize \$299.95				
JACKET SIZE	SML	MED	LRG	XLG	2XL	
	4-6	8-10	12-14	16-18	18-20	
Magenta	C70-2102	C70-2104	C70-2106	C70-2108	C70-2109	
White/Magenta	C70-2122	C70-2124	C70-2126	C70-2128	C70-2129	
Grape	C70-2132	C70-2134	C70-2136	C70-2138	C70-2139	
<b>White/Black</b>	<b>C72-3002</b>	<b>C72-3004</b>	<b>C72-3006</b>	<b>C72-3008</b>	<b>C72-3009</b>	
PLUS SIZES				1W	2W	3W
JACKET SIZE	*See page 205 for Women's Plus Size Information			16-18*	20-22*	24-26*
SC10 Magenta				C70-2108W	C70-2109W	C70-2109Y

\* New Color Available

## TECHNICAL FEATURES

Women's

LAUNCH  
G2 JACKET



WOMEN'S



Hi-Vis



Reflex Blue



Magenta/Gray

LAUNCH G2 JACKET		\$255.95					
JACKET SIZE	XSM	SML	MED	LRG	XLG	2XL	
	0-2	4-6	8-10	12-14	16-18	18-20	
Hi-Vis	C72-2531	C72-2532	C72-2534	C72-2536	C72-2538	C72-2539	
Reflex Blue	C72-2551	C72-2552	C72-2554	C72-2556	C72-2558	C72-2559	
Magenta/gray	C72-2561	C72-2562	C72-2564	C72-2566	C72-2568	C72-2569	

Also Available in Youth Sizes

TECHNICAL FEATURES





# Women's

# TWIST JACKET



WOMEN'S



Yellow



Green

Black

Magenta

Grape

Reflex Blue

AVAILABLE IN  
Plus Sizes

## TWIST JACKET

\$249.95 / Oversize \$269.95

	XSM	SML	MED	LRG	XLG	2XL
JACKET SIZE	0-2	4-6	8-10	12-14	16-18	18-20
Yellow	C70-2431	C70-2432	C70-2434	C70-2436	C70-2438	C70-2439
Green	C70-2441	C70-2442	C70-2444	C70-2446	C70-2448	C70-2449
Black	C70-2471	C70-2472	C70-2474	C70-2476	C70-2478	C70-2479
Magenta	C70-2501	C70-2502	C70-2504	C70-2506	C70-2508	C70-2509
Grape	C70-2531	C70-2532	C70-2534	C70-2536	C70-2538	C70-2539
Reflex Blue	C70-2451	C70-2452	C70-2454	C70-2456	C70-2458	C70-2459

### PLUS SIZES

	1W	2W	3W
JACKET SIZE	16-18*	20-22*	24-26*
Grape	C70-2538W	C70-2539W	C70-2539Y

## TECHNICAL FEATURES

165





# Women's BOLT SE G2 JACKET



Magenta



Yellow



Green



Grape



White

## BOLT G2 SE JACKET

\$249.95

JACKET SIZE	XSM 0-2	SML 4-6	MED 8-10	LRG 12-14	XLG 16-18	2XL 18-20
Yellow	C72-2131	C72-2132	C72-2134	C72-2136	C72-2138	C72-2139
Green	C72-2141	C72-2142	C72-2144	C72-2146	C72-2148	C72-2149
Magenta	C72-2201	C72-2202	C72-2204	C72-2206	C72-2208	C72-2209
Grape	C72-2231	C72-2232	C72-2234	C72-2236	C72-2238	C72-2239
White	C72-2291	C72-2292	C72-2294	C72-2296	C72-2298	C72-2299

### TECHNICAL FEATURES





# BOLT SE *Women's* G2 JACKET



WOMEN'S



Realtree® Magenta  
  
REALTREE  
Licensed Product



Reflex Blue/Hi-Vis  
Smoke



Grape/Cyan  
Smoke



Magenta/Dk Orange  
Smoke

### BOLT G2 SE JACKET

	XSM	SML	MED	LRG	XLG	2XL
JACKET SIZE	0-2	4-6	8-10	12-14	16-18	18-20
Realtree	C72-2361	C72-2362	C72-2364	C72-2366	C72-2368	C72-2369
Grape Smoke	C72-2331	C72-2332	C72-2334	C72-2336	C72-2338	C72-2339
Ref Blue Smoke	C72-2351	C72-2352	C72-2354	C72-2356	C72-2358	C72-2359
Magenta Smoke	C72-2381	C72-2382	C72-2384	C72-2386	C72-2388	C72-2389

### PLUS SIZES

	1W	2W	3W
JACKET SIZE	16-18*	20-22*	24-26*
Magenta Smoke	C72-2388W	C72-2389W	C72-2389Y

Also available in Youth Sizes; (Toddler-Realtree® only)

Realtree Camo - \$269.95  
Smoke - \$249.95 / Oversize - \$269.95

### TECHNICAL FEATURES





# CHARM *Women's* G2 JACKET

WOMENS



Grape



Reflex Blue



Magenta



Black



## CHARM JACKET

	XSM	SML	MED	LRG	XLG	2XL
JACKET SIZE	0-2	4-6	8-10	12-14	16-18	18-20
Reflex Blue	C72-1951	C72-1952	C72-1954	C72-1956	C72-1958	C72-1959
Black	C72-1971	C72-1972	C72-1974	C72-1976	C72-1978	C72-1979
Magenta	C72-1981	C72-1982	C72-1984	C72-1986	C72-1988	C72-1989
Grape	C72-1991	C72-1992	C72-1994	C72-1996	C72-1998	C72-1999
Scope	C72-9231	C72-9232	C72-9234	C72-9236	C72-9238	C72-9239

Solid - \$139.95

Scope - \$159.95

### TECHNICAL FEATURES



# Women's FUEL G5

BLACK PANT



Grape



Optional Strap Kit



Yellow



Magenta



Reflex Blue



Black

**FUEL G5B PANT** \$ 199.95 - Strap Kit \$ 29.95

	XSM	SML	MED	LRG	XLG	2XL
PANT SIZE	0-2	4-6	8-10	10-12	14-16	18-20
Yellow	---	C73-5532	C73-5534	C73-5536	C73-5538	C73-5539
Magenta	---	C73-5602	C73-5604	C73-5606	C73-5608	C73-5609
Grape	---	C73-5632	C73-5634	C73-5636	C73-5638	C73-5639
Reflex Blue	---	C73-5652	C73-5654	C73-5656	C73-5658	C73-5659
Black	C73-4671	C73-7672	C73-4674	C73-4676	C73-4678	C73-4679
WOMEN'S PETITE (28" INSEAM)						
Black Petite	---	---	C73-4674S	C73-4676S	C73-4678S	C73-4679S
SHOULDER STRAP KIT	XSM-SML		MED-XLG		2XL	
Black	473-9991		473-9992		473-9993	

## TECHNICAL FEATURES



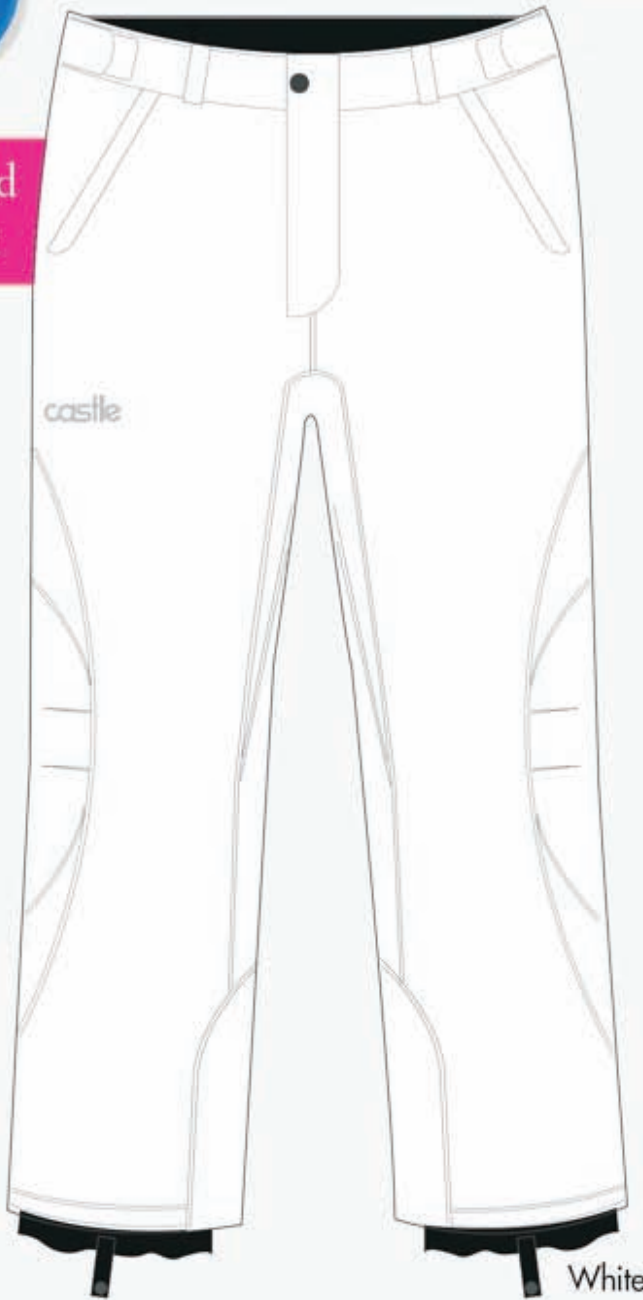


# Women's BLISS PANT



WOMEN'S

New! Tailored Womens Fit



White



Light Gray



Black

BLISS PANT	\$ 221.95					
	XSM	SML	MED	LRG	XLG	2XL
PANT SIZE	0-2	4-6	8-10	10-12	14-16	18-20
Light Gray	--	C73-5762	C73-5764	C73-5766	C73-5768	C73-5769
Black	C73-5771	C73-5772	C73-5774	C73-5746	C73-5778	C73-5679
White	--	C73-5792	C73-5794	C73-5796	C73-5798	C73-5699
WOMEN'S PETITE (28" INSEAM)						
Black Petite	--	--	C73-5774S	C73-5746S	C73-5778S	C73-5679S

## TECHNICAL FEATURES





# FACTOR BIB

## Women's



**FACTOR BIB \$ 319.95**

	XSM	SML	MED	LRG	XLG
PANT SIZE	0-2	4-6	8-10	10-12	14-16
Womens	487-0031	487-0032	487-0034	487-0036	487-0038

### TECHNICAL FEATURES



# RIZER WAIST BIB Women's



**RIZER WAIST BIB \$ 229.95**

	XSM	SML	MED	LRG	XLG	2XL
PANT SIZE	0-2	4-6	8-10	10-12	14-16	18-20
Womens	473-2151	473-2152	473-2154	473-2156	473-2158	473-2159
WOMENS PETITE (28" INSEAM)						
Womens Petite	--	--	473-2154S	473-2156S	473-2158S	473-2159S

### TECHNICAL FEATURES





# Women's CR2 BIB



**CR2 BIB** **\$ 179.95**

	XSM	SML	MED	LRG	XLG	2XL
PANT SIZE	0-2	4-6	8-10	10-12	14-16	18W-20W
Womens	473-2251	473-2252	473-2254	473-2256	473-2258	473-2259
WOMENS PETITE (28" INSEAM)						
Womens Petite	--	--	473-2254S	473-2256S	473-2258S	473-2259S

*Also Available in Youth Sizes*

### TECHNICAL FEATURES



# Women's PLATFORM G2 BIB

**PLATFORM G2 BIB** **\$ 119.95**

	XSM	SML	MED	LRG	XLG	2XL
PANT SIZE	0-2	4-6	8-10	10-12	14-16	18-20
Womens	473-2451	473-2452	473-2454	473-2456	473-2458	473-2459

### TECHNICAL FEATURES





Youth  
GIRLS



LAUNCH  
GIRLS G2 JACKET



Hi-Vis



Reflex Blue



Magenta/Gray

GIRLS LAUNCH G2 JACKET \$ 149.95 / XL - 154.95

	XSM	SML	MED	LRG	XLG
YOUTH CLOTHING SIZE	4-6	7-8	10-12	14-16	18-20
Hi-Vis	C72-4031	C72-4032	C72-4034	C72-4036	C72-4038
Reflex Blue	C72-4051	C72-4052	C72-4054	C72-4056	C72-4058
Magenta/Gray	C72-4061	C72-4062	C72-4064	C72-4066	C72-4068

TECHNICAL FEATURES





# LAUNCH BOYS G2 JACKET

# Youth



YOUTH • YOUTH •



Reflex Blue



Hi-Vis



Flo Orange



Blue/Orange

## BOYS LAUNCH G2 JACKET \$ 149.95 / XL - 154.95

	XSM	SML	MED	LRG	XLG
YOUTH CLOTHING SIZE	4-6	7-8	10-12	14-16	18-20
Reflex Blue	C72-3521	C72-3522	C72-3524	C72-3526	C72-3528
Hi-Vis	C72-3531	C72-3532	C72-3534	C72-3536	C72-3538
Flo Orange	C72-3551	C72-3552	C72-3554	C72-3556	C72-3558
Blue/Orange	C72-3561	C72-3562	C72-3564	C72-3566	C72-3568

### TECHNICAL FEATURES



Youth

**BOLT REALTREE®**  
G2 JACKET



YOUTH • Y



Dk Orange



**REALTREE™**  
Licensed Product



Magenta

**GIRLS**

**YOUTH BOLT REALTREE® G2 JACKET \$ 189.95**

	XSM	SML	MED	LRG	XLG
YOUTH CLOTHING SIZE	4-6	7-8	10-12	14-16	18-20
Dark Orange	C72-3381	C72-3382	C72-3384	C72-3386	C72-3388
Magenta	C72-3881	C72-3882	C72-3884	C72-3886	C72-3888

**TECHNICAL FEATURES**





# BOLT SE GIRLS G2 JACKET

# Youth GIRLS



YOUTH • YOUTH •



Grape/Smoke



Reflex Blue/Smoke



Magenta/Smoke

## GIRLS BOLT SE JACKET

**\$ 165.95 / XL - \$169.95**

	XSM	SML	MED	LRG	XLG
YOUTH CLOTHING SIZE	4-6	7-8	10-12	14-16	18-20
Grape/Smoke	C72-3831	C72-3832	C72-3834	C72-3836	C72-3838
Ref Blue/Smoke	C72-3851	C72-3852	C72-3854	C72-3856	C72-3858
Magenta/Smoke	C72-3861	C72-3862	C72-3864	C72-3866	C72-3868

### TECHNICAL FEATURES



# Youth

# BOLT SE BOYS G2 JACKET



YOUTH • Y



Blue



Red



Yellow



Green



Flo Orange

## BOYS BOLT SE JACKET

**\$ 165.95 / XL - 169.95**

	XSM	SML	MED	LRG	XLG
YOUTH CLOTHING SIZE	4-6	7-8	10-12	14-16	18-20
Red	C72-3311	C72-3312	C72-3314	C72-3316	C72-3318
Blue	C72-3321	C72-3322	C72-3324	C72-3326	C72-3328
Yellow	C72-3331	C72-3332	C72-3334	C72-3336	C72-3338
Green	C72-3341	C72-3342	C72-3344	C72-3346	C72-3348
Flo Orange	C72-3351	C72-3352	C72-3354	C72-3356	C72-3358

### TECHNICAL FEATURES





# CORE SE JACKET

# Youth

YOUTH • YOUTH •



Shady



Hound

YOUTH CORE SE JACKET \$ 159.95 XL - 164.95

	XSM	SML	MED	LRG	XLG
YOUTH CLOTHING SIZE	4-6	7-8	10-12	14-16	18-20
Shady	C70-6601	C70-6602	C70-6604	C70-6606	C70-6608
Hound	C70-6611	C70-6612	C70-6614	C70-6616	C70-6618

### TECHNICAL FEATURES





# Youth

## CORE JACKET



YOUTH • Y



Dk Orange



Lime

### YOUTH CORE JACKET \$ 143.95 / XL - 148.95

	XSM	SML	MED	LRG	XLG
YOUTH CLOTHING SIZE	4-6	7-8	10-12	14-16	18-20
Lime	C70-6441	C70-6442	C70-6444	C70-6446	C70-6448
Dk Orange	C70-6481	C70-6482	C70-6484	C70-6486	C70-6488

#### TECHNICAL FEATURES





Slash Red



Cubed



Ace Red

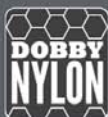


Mission Grey

Youth Special Edition Jackets \$ 119.95

	XSM	SML	MED	LRG	XLG
YOUTH CLOTHING SIZE	4-6	7-8	10-12	14-16	18-20
Slash Red	C70-2941	C70-2942	C70-2944	C70-2946	C70-2948
Cube	C70-7111	C70-7112	C70-7114	C70-7116	C70-7118
Mision Grey	C70-7101	C70-7102	C70-7104	C70-7106	C70-7108
Ace Red	C70-2901	C70-2902	C70-2904	C70-2906	C70-2908

TECHNICAL FEATURES







# LAUNCH TODDLER JACKET

## toddler sizes



YOUTH • YOUTH •



Dk Orange



Red



Green



Magenta

### TODDLER LAUNCH JACKET \$ 109.95

TODDLER CLOTHING SIZE

	2T	3T	4T	5T
Red	C70-7912	C70-7913	C70-7914	C70-7915
Green	C70-7942	C70-7943	C70-7944	C70-7945
Dk Orange	C70-7982	C70-7983	C70-7984	C70-7985
Magenta	C70-7902	C70-7903	C70-7904	C70-7905

Now Available in 2T

#### TECHNICAL FEATURES





# BOLT REALTREE® TODDLER G2 JACKET

## toddler sizes

YOUTH • YOUTH



Dk Orange



# GIRLS

Magenta



### TODDLER BOLT REALTREE® JACKET **\$129.95**

	2T	3T	4T	5T
TODDLER CLOTHING SIZE				
Dk Orange	C72-4182	C72-4183	C72-4184	C72-4185
Magenta	C72-4282	C72-4283	C72-4284	C72-4285

#### TECHNICAL FEATURES





Youth

# FUEL PANT



YOUTH FUEL PANT **\$ 119.95**

	XSM	SML	MED	LRG	XLG
Youth Clothing Size	4-6	7-8	10-12	14-16	18-20
Youth Black	C73-6171	C73-6172	C73-6174	C73-6176	C73-6178

### TECHNICAL FEATURES



Youth

# BLISS PANT

GIRLS BLISS PANT **\$ 129.95**

	XSM	SML	MED	LRG	XLG
Youth Clothing Size	4-6	7-8	10-12	14-16	18-20
Girls Black	C73-5971	C73-5972	C73-5974	C73-5976	C73-5978

### TECHNICAL FEATURES



Youth

# CR2 BIB

YOUTH CR2 BIB **\$ 109.95**

	XSM	SML	MED	LRG	XLG
Youth Clothing Size	4-6	7-8	10-12	14-16	18-20
Youth Black	473-2271	473-2272	473-2274	473-2276	473-2278

### TECHNICAL FEATURES





# HEATED TRS GLOVE



Mens Sizes	XS	SM	MD	LG	XL	2XL	3XL
	-	473-6212	473-6214	473-6216	473-6218	473-6219	473-6219T
Ladies Sizes	XS	SM	MD	LG	XL	2XL	
	473-6221	473-6222	473-6224	473-6226	473-6228	673-6229	

**\$ 279.95**

## TECHNICAL FEATURES



PRIMALOFT.



**TRS GLOVE**

TRS Glove  
Mens & Ladies Sizes

Mens Sizes	XS	SM	MD	LG	XL	2XL	3XL
	-	473-6002	473-6004	473-6006	473-6008	473-6009	473-6009T
Ladies Sizes	XS	SM	MD	LG	XL	2XL	
	473-6201	473-6202	473-6204	473-6206	473-6208	673-6209	

**\$ 86.95**

## TECHNICAL FEATURES



PRIMALOFT.





# RIZER G7 GLOVE



Red

Yellow

Green

Black

Hi-Vis



Blue

## RIZER G7 GLOVE

**\$ 74.95**

	SML	MED	LRG	XLG	2XL	3XL
Red	C74-4112	C74-4114	C74-4116	C74-4118	C74-4119	C74-4119T
Blue	C74-4122	C74-4124	C74-4126	C74-4128	C74-4129	C74-4129T
Yellow	C74-4132	C74-4134	C74-4136	C74-4138	C74-4139	C74-4139T
Green	C74-4142	C74-4144	C74-4146	C74-4148	C74-4149	C74-4149T
Black	C74-3072	C74-3074	C74-3076	C74-3078	C74-3079	C74-3079T
Hi Vis	C74-4182	C74-4184	C74-4186	C74-4188	C74-4189	C74-4189T

### TECHNICAL FEATURES





# CR2 G6 GLOVE

MENS



**CR2 GLOVE** **\$ 59.95**

	XSM	SML	MED	LRG	XLG	2XL	3XL
Red	--	C74-3512	C74-3514	C74-3516	C74-3518	C74-3519	--
Blue	--	C74-3522	C74-3524	C74-3526	C74-3528	C74-3529	--
Yellow	--	C74-3532	C74-3534	C74-3536	C74-3538	C74-3539	--
Green	--	C74-3542	C74-3544	C74-3546	C74-3548	C74-3549	--
Black	C74-3571	C74-3572	C74-3574	C74-3576	C74-3578	C74-3579	C74-3579T

### TECHNICAL FEATURES

**HIPORA.** Thinsulate  
WATERPROOF/BREATHABLE 3M INSULATION



# LAUNCH II GLOVE



**LAUNCH II GLOVE** **\$ 53.95**

	SML	MED	LRG	XLG	2XL	3XL
Black	473-6022	473-6024	473-6026	473-6028	473-6029	473-6029T

### TECHNICAL FEATURES For complete list see page 179

**WARMAL**  
**HIPORA.**  
**SPANDURA**  
WATER RESISTANT



# MISSION GLOVE



5 • MENS •



MISSION GLOVE \$ 59.95

	SML	MED	LRG	XLG	2XL	3XL
Black	473-6102	473-6104	473-6106	473-6108	473-6109	473-6109T

## TECHNICAL FEATURES

**WARMAL**  
WATERPROOF/BREATHABLE

**HIPORA**  
WATERPROOF/BREATHABLE  
**SPANDURA**  
WATER RESISTANT



# SWITCH GLOVE



SWITCH GLOVE \$ 49.95

	SML	MED	LRG	XLG	2XL	3XL
Black	C74-3672	C74-3674	C74-3676	C74-3678	C74-3679	C74-3679T
White	C74-3792	C74-3794	C74-3796	C74-3798	C74-3799	—

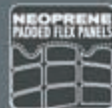
## TECHNICAL FEATURES

**HIPORA**  
WATERPROOF/BREATHABLE

**Thinsulate**  
3M INSULATION

**spandex**  
GUSSETS

**SPANDURA**  
WATER RESISTANT



# PLATFORM GLOVE



• MENS •



**PLATFORM GLOVE \$ 48.95**

2XS XSM SML MED LRG XLG 2XL 3XL

Men : 473-6300 473-6301 473-6302 473-6304 473-6306 473-6308 473-6309 473-6309T

Women 473-6381 473-6382 473-6384 473-6386 473-6388

### TECHNICAL FEATURES



# PLATFORM MITT



**PLATFORM MITT \$ 39.95**

2XS XSM SML MED LRG XLG 2XL 3XL

Men 473-6350 473-6351 473-6352 473-6354 473-6356 473-6358 473-6359 473-6359T

Women 473-6331 473-6332 473-6334 473-6336 473-6338

### TECHNICAL FEATURES







# RIZER G6 GLOVE

## Women's

WOMENS



Grape



Black



Magenta

WOMEN'S RIZER G6 GLOVE		\$ 74.95				
	XSM	SML	MED	LRG	XLG	2XL
Black	C74-3271	C74-3272	C74-3274	C74-3276	C74-3278	C74-3279
Magenta	C74-3301	C74-3302	C74-3304	C74-3306	C74-3308	C74-3309
Grape	C74-3331	C74-3332	C74-3334	C74-3336	C74-3338	C74-3339

### TECHNICAL FEATURES

**HIPORA** WATERPROOF/BREATHABLE **PRIMALOFT**



Youth

PLATFORM GLOVE



YOUTH • Y



Red



Black



Magenta

PLATFORM GLOVE \$41.95

	SML	MED	LRG
YOUTH SIZES			
Black	473-6312	473-6314	473-6316
Red	C73-6412	C73-6414	C73-6416
Magenta	C73-6422	C73-6424	C73-6426

TECHNICAL FEATURES



Youth

PLATFORM MITT

toddler sizes



PLATFORM MITT

	SML	MED	LRG
YOUTH SIZES \$35.95			
YOUTH	473-6362	473-6364	473-6366

	2T	4T	6T
TODDLER SIZES \$29.95			
TODDLER	473-6372	473-6374	473-6376

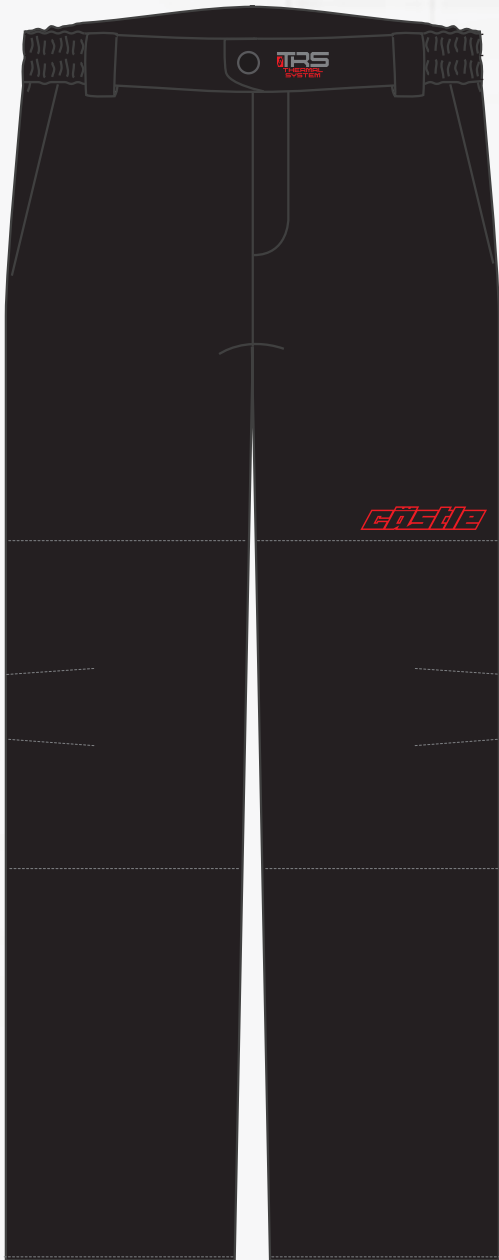
TECHNICAL FEATURES



# MENS MID-LAYER TOP & BOTTOM



• MENS •



## MENS MID-LAYER TOP & BOTTOM

	SML	MED	LRG	XLG	2XL	3XL
<b>Jacket Blk</b>	78-1002	78-1004	78-1006	78-1008	78-1009	78-1009T
<b>Pant Black</b>	78-1102	78-1104	78-1106	78-1108	78-1109	78-1109T

**\$ 119.95**

**\$ 109.95**

### JACKET

- Semi-fitted athletic pattern
- Low bulk design for optimal mid-layer comfort
- 350g polyester fleece/Spandex moisture transfer construction
- 4-way stretch performance fabric moves with you
- Flat stitch seams for enhanced comfort
- Designed to rapidly transfer excess moisture away from the user to keep you warm and dry
- Dual zippered hand pockets
- Thermal welded chest pocket
- YKK zippers
- Heat bonded rubberized logo treatments

### PANT

- Semi-Relaxed athletic pattern
- Low bulk design for optimal mid-layer comfort
- 350G polyester fleece/Spandex moisture transfer construction
- 4-way stretch performance fabric moves with you
- Flat stitch seams for enhanced comfort
- Designed to rapidly transfer excess moisture away from the user to keep you warm and dry
- Comfortable elasticized waist with integrated belt loops
- Dual zippered hand pockets
- YKK zipper
- Heat bonded rubberized logo treatments



# MID-LAYER TOP & BOTTOM

# Women's

WOMENS



## WOMEN'S MID-LAYER TOP & BOTTOM

	XSM	SML	MED	LRG	XLG	2XL
<b>Jacket Blk</b>	78-2001	78-2002	78-2004	78-2006	78-2008	78-2009
<b>Pant Black</b>	78-2101	78-2102	78-2104	78-2106	78-2108	78-2109

**\$119.95**

**\$109.95**

### JACKET

- Semi-fitted athletic pattern
- Low bulk design for optimal mid-layer comfort
- 350g polyester fleece/Spandex moisture transfer construction
- 4-way stretch performance fabric moves with you
- Flat stitch seams for enhanced comfort
- Designed to rapidly transfer excess moisture away from the user to keep you warm and dry
- Dual zippered hand pockets
- Thermal welded chest pocket
- YKK zippers
- Heat bonded rubberized logo treatments

### PANT

- Semi-Relaxed athletic pattern
- Low bulk design for optimal mid-layer comfort
- 350G polyester fleece/Spandex moisture transfer construction
- 4-way stretch performance fabric moves with you
- Flat stitch seams for enhanced comfort
- Designed to rapidly transfer excess moisture away from the user to keep you warm and dry
- Comfortable elasticized waist with integrated belt loops
- Dual zippered hand pockets
- YKK zipper
- Heat bonded rubberized logo treatments

# BALACLAVAS



**POLYESTER/COTTON** 475-6550 \$6.25  
**SILK / COTTON** 475-6551 \$6.95  
**THERMAX** 475-6553 \$7.95

- Wicks away moisture from skin; protects face, head & neck from the cold.
- Can be worn comfortably under helmet without affecting helmet fit.
- Extra long neck to provide protection from wind or frostbite.
- Black
- One size fits all.



**FOG FREE** 475-6258 \$32.95

- Polyester and neoprene.
- Eliminates the fog from forming on all glasses, goggles and shields by redirecting your breath from your helmet.
- Super breath deflector
- Black
- One size fits all.



**HINGED BALACLAVA** S/M 475-0001 \$29.95  
 L/XL 475-0002 \$29.95

- Microflex Fleece
- Hinged for maximum comfort
- Added Face and Neck Protection via Windshield Inserts
- Lycra Binding around the face seals out the elements
- Mesh Breathing Panel Ideal for Layering
- Moisture Wicking



**BARRIER** 475-0111 \$28.95

- Barrier windproof membrane on neck.
- Micro-Fleece cape for maximum wicking fabric.
- Flat lock stitched seams.
- Machine washable.
- Black
- One size fits all.



**MINUS 33 MERINO WOOL** 475-0113 \$36.95

- 100% Merino Wool.
- 230 g/m2 Interlock knit construction.
- Flat lock seams to prevent chafing.
- Naturally Anti-Microbial and Anti-Bacterial.
- Machine washable.
- Black
- One size fits all.



**COOL MAX** 475-0107 \$12.95

- Super soft for maximum comfort.
- CoolMax® by Invista is designed to out perform all other fibers in terms of keeping you dry and warm.
- Machine washable.
- Black
- One size fits all.



**FOG FREE MASK** 475-6461 \$15.95

- 70% Neoprene/30% Nylon
- Super breath deflector.
- The concept is to eliminate the fog from forming on all glasses, goggles and shields by redirecting your breath from your helmet.
- Wearable with open face helmet
- No-Fog® style mask
- One size fits all.



**PROCLAVA** 475-0109 \$15.95

- Nylon hood and fleece acrylic "neckie" with extended bib on front and back.
- Extra softness for a non-chafing fit.
- Machine washable.
- Black
- One size fits all.



**NEOPRENE MASK** \$9.95  
**MEDIUM** 475-6471 **LARGE** 475-6472

- 90% Neoprene/10% Nylon
- Form-fitting nose extends completely over end of nose.
- Vents at mouth, nose and ears. Unrestricted breathing helps to prevent fogging.
- Extra thick 3 mm 100% neoprene. Covers cheek bone and temple area and fits goggles



**RACER CONTOURED MASK** 475-6570 \$12.95

- 85% Neoprene/15% Nylon
- Nylon knit laminated to foam.
- Elastic strap secures mask to face.
- Large exhaust vent.
- 7" long dickey for maximum throat protection.
- One size fits all

# CASTLE BEANIES



FLIP-IT YELLOW

FLIP-IT GREEN

FLIP-IT GRAY

FLIP-IT MAGENTA

FLIP-IT WHITE



SHATTERED RED • ORANGE • HI VIS • MAGENTA



SLASH RED



TEAM BLACK

FLEECE LINED



MISSY BLACK • GRAY

FLEECE LINED



ACE BLUE

FLEECE LINED



CASTLE X BLACK • GRAY

VISOR  
BLACK • WHITE



RANDY RED • REFLEX BLUE



## BEANIES

\$ 24.95

REVERSIBLE	ONE SIZE
Flip-It Yellow	98-3140
Flip-It Green	98-3141
Flip-It Gray	98-3142
Flip-It Magenta	98-3143
Flip-It White	98-3144

PATTERN	ONE SIZE
Shattered Red	98-3160
Shattered Org	98-3161
Shattered Hi-Vis	98-3162
Shattered Magenta	98-3163
Slash Red	98-3128
Team	98-3150

FLEECE LINED	ONE SIZE
Missy Gray	98-3155
Missy Black	98-3156
Ace Blue	98-3125
Castle X Black	98-3119
Castle X Gray	98-3120

VISOR	ONE SIZE
Visor Black	98-3116
Visor White	98-3117
RANDY	
Randy Red	98-3133
Randy R. Blue	98-3134

# BEANIES • HATS **CASTLE**

MARGO PURPLE



ZOOM MAGENTA • REFLEX BLUE

FLEECE  
LINED



GLAMOUR IVORY



SWEETIE BLACK

FLEECE  
LINED



DREAM MAGENTA & BLACK

## BEANIES

**\$ 24.95**

ONE SIZE

### WOMEN'S BEANIES

Margo Purple	C98-3130
Zoom Magenta	C98-3131
Zoom R. Blue	C98-3132
Glamour	C98-3122
Sweetie	C98-3123
Dream	C98-3124

**new**

# PLATFORM BOOT



• MENS •



## PLATFORM BOOT

**\$ 109.95**

SIZE	3	4	5	6	7	8	9	10	11	12	13
Black	84-1603	84-1604	84-1605	84-1606	84-1607	84-1608	84-1609	84-1610	84-1611	84-1612	84-1613

- 100% Natural rubber sole
- Scotchguard® coated leather upper
- Quick adjust Velcro® top closure
- Easy slide lower quick ratchet buckle
- Removable Castle ColdShield® liner offers comfort to -40°F
- Reflective elements on back of boots





# FORCE BOOT



Molded High Abrasion Heel



Articulated Padded Collar



Speed Lace System



Cold Shield® Technology



## COMFORT RATING

Thermal factors such as air temp, radiant temp, air velocity, and humidity all contribute to our thermal comfort. Stubbornly, Mother Nature refuses us the ability to control these thermal factors.

Personal factors such as the type of clothing we wear and the activity levels we perform at, are two elements of thermal comfort we can control. Additional variables that affect comfort are circulation in the feet, presence of moisture, body temp, wind chill and sock quality.

-60°  
-51°

[castlesoles.com](http://castlesoles.com)

## FORCE BOOT

**\$ 199.95**

SIZE	7	8	9	10	11	12	13
Mens	484-6007	484-6008	484-6009	484-6010	484-6011	484-6012	484-6013

- 1000D Nylon upper with reflective elements
- Molded high abrasion heel
- Black Armstrong PU coated leather
- Castle Speed Lace System with an articulated padded collar

- Castle DRY-X™ waterproof membrane
- 3-layer Merino wool blend insulation with wicking air mesh and perforated air trap foam
- Rubber sole with internal EVA shock comfort chambers
- Castle Cold Shield® Technology: removable insole, wicking wool blend with metallic heat reflecting layer



# BARRIER BOOT

# Women's

WOMENS



Quick Connect System



Molded High Abrasion Heel



Cold Shield® Technology

**COMFORT RATING**

Thermal factors such as air temp, radiant temp, air velocity, and humidity all contribute to our thermal comfort. Stubbornly, Mother Nature refuses us the ability to control these thermal factors.

Personal factors such as the type of clothing we wear and the activity levels we perform at, are two elements of thermal comfort we can control. Additional variables that affect comfort are circulation in the feet, presence of moisture, body temp, wind chill and sock quality.

**-60° / -51°**

[castlesales.com](http://castlesales.com)

## WOMENS BARRIER BOOT

**\$ 199.95**

SIZE	6	7	8	9	10	11
Womens	484-1306	484-1307	484-1308	484-1309	484-1310	484-1311

- 1000D Nylon upper with reflective elements
- Molded high abrasion heel
- Black Armstrong PU coated leather
- Castle Quick Connect buckle system
- Castle DRY-X™ waterproof membrane
- 3-layer Merino wool blend insulation with wicking air mesh and perforated air trap foam
- Rubber sole with internal EVA shock comfort chambers
- Snow shield gaiter with bungee cord lock
- Castle Cold Shield® Technology: removable insole, wicking wool blend with metallic heat reflecting layer

# BARRIER BOOT



• MENS •



Quick Connect System



Molded High Abrasion Heel



Cold Shield® Technology

## COMFORT RATING

Thermal factors such as air temp, radiant temp, air velocity, and humidity all contribute to our thermal comfort. Stubbornly, Mother Nature refuses us the ability to control these thermal factors.

Personal factors such as the type of clothing we wear and the activity levels we perform at, are two elements of thermal comfort we can control. Additional variables that affect comfort are circulation in the feet, presence of moisture, body temp, wind chill and sock quality.



[castlesales.com](http://castlesales.com)

## BARRIER BOOT

**\$ 199.95**

SIZE	7	8	9	10	11	12	13
Mens	484-6027	484-6028	484-6029	484-6030	484-6031	484-6032	484-6033

- 1000D Nylon upper with reflective elements
- Molded high abrasion heel
- Black Armstrong PU coated leather
- Castle Quick Connect buckle system
- Castle DRY-X™ waterproof membrane

- 3-layer Merino wool blend insulation with wicking air mesh and perforated air trap foam
- Rubber sole with internal EVA shock comfort chambers
- Snow shield gaiter with bungee cord lock
- Castle Cold Shield® Technology: removable insole, wicking wool blend with metallic heat reflecting layer

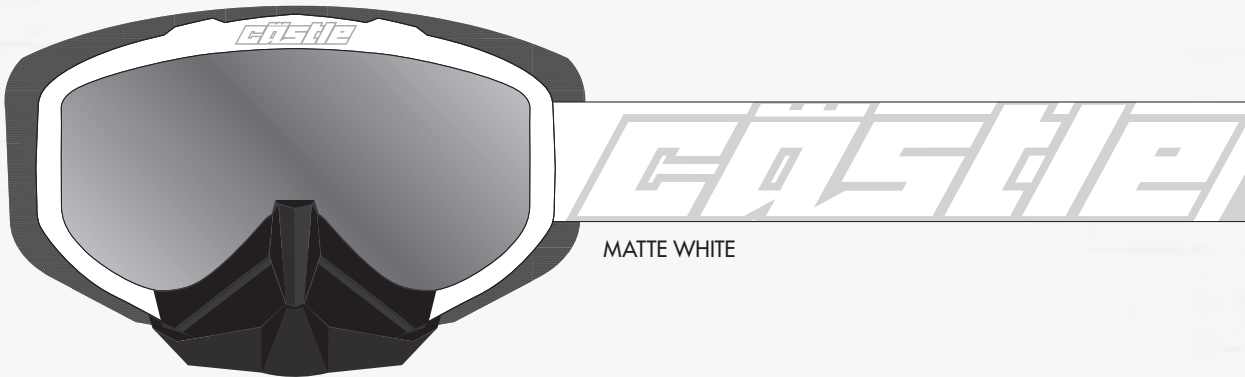
## FORCE SNOW GOGGLE



GLOSS BLACK



MATTE BLACK



MATTE WHITE

### FORCE SNOW GOGGLE **\$ 59.95**

FORCE SNOW GOGGLE	
Gloss Black	64-1501
Matte Black	64-1502
Matte White	64-1503

REPLACEMENT DUAL LENSES	
Clear - Dual	64-9155A
Smoke - Dual	64-9155B
Yellow - Dual	64-9155C
Blue - Dual	64-9155D
Red - Dual	64-9155E
Mirror Red - Dual	64-9155F
Mirror Blue - Dual	64-9155G
Mirror Silver - Dual	64-9155H

- Flexible polyurethane frame
- Custom over-sized triple stage foam utilizing ultra-wick quick dry fleece
- Custom molded rubberized nose guard protects nose area from excessive wind and debris
- UV 400 dual pane mirrored, anti-fog/anti-scratch coated replaceable lens
- Silicone beaded strap maintains proper strap placement
- Micro-fiber carry bag included
- Comes standard with mirror lens (color as shown)



# FORCE SE SNOW GOGGLE



• GOGGLE •



X1 BLACK



X1 GREEN



X1 HI-VIS



X2 ORANGE



X2 MAGENTA



X2 RED

## FORCE SE SNOW GOGGLE \$ 64.95

FORCE SE SNOW GOGGLE	
X1 Black	64-1611
X1 Green	64-1612
X1 Hi-Vis	64-1613
X2 Orange	64-1721
X2 Magenta	64-1722
X2 Red	64-1723

REPLACEMENT DUAL LENSES	
Clear - Dual	64-9155A
Smoke - Dual	64-9155B
Yellow - Dual	64-9155C
Blue - Dual	64-9155D
Red - Dual	64-9155E
Mirror Red - Dual	64-9155F
Mirror Blue - Dual	64-9155G
Mirror Silver - Dual	64-9155H

- Flexible polyurethane frame
- Custom over-sized triple stage foam utilizing ultra-wick quick dry fleece
- Custom molded rubberized nose guard protects nose area from excessive wind and debris
- UV 400 dual pane mirrored, anti-fog/anti-scratch coated replaceable lens
- Silicone beaded strap maintains proper strap placement
- Micro-fiber carry bag included
- Comes standard with mirror lens (color as shown)



## RIOT GOGGLES \$ 55.95

### Riot Colors

	PART #
1. Groove	453-8502
2. Shatter	453-8503
3. Ace	453-8506
4. Alias	453-8507
5. Kranked	453-8504
6. Bella	453-8505
7. G. Slash	453-8508

### Replacement Lenses for Riot Goggles

Dbi Lens Clear	453-9144A
Dbi Lens Smoke	453-9144B
Dbi Lens Yellow	453-9144C
Dbi Lens Blue	453-9144D
Dbi Lens Red	453-9144E
Dbi Lens Mirror Red	453-9144F
Dbi Lens Mirror Blue	453-9144G
Dbi Lens Mirror Silver	453-9144H

- Flexible polyurethane frame
- Custom over-sized triple stage foam utilizing ultra-wick quick dry fleece
- Dual pane anti-fog/anti-scratch replaceable lens
- UV 400 coated mirrored lens
- Silicone beaded strap maintains proper strap placement
- Micro-Fiber carry bag included

1.



3.



2.



5.



4.



7.



6.



# CASTLE EYEWEAR STAGE OTG SNOW GOGGLE

- Perfect for "over the glasses" use Custom over-sized triple stage foam utilizing ultra-wick quick dry fleece
- Dual pane anti-fog / anti-scratch replaceable
- UV 380 coated lens
- Hi-Def yellow lens offers enhanced visibility
- Silicone beaded strap maintains proper strap placement
- Micro-Fiber carry bag included

**\$ 49.95 / SE \$ 52.95**

Goggle Colors	
	PART #
1. Red	453-8300
2. Blue	453-8301
3. Black	453-8302
4. Jolt SE	453-8303
5. Sabotage SE	453-8304
Replacement Lenses for Stage Goggles	
Dbi Lens Clear	453-9133A
Dbi Lens Smoke	453-9133B
Dbi Lens Yellow	453-9133C
Dbi Lens Blue	453-9133D
Dbi Lens Red	453-9133E
Dbi Lens Mirror Red	453-9133F
Dbi Lens Mirror Blue	453-9133G
Dbi Lens Mirror Silver	453-9133H



# LAUNCH GOGGLE SNOW GOGGLE \$ 45.95

- Flexible polyurethane frame
- Custom over-sized triple stage foam utilizing ultra-wick quick dry fleece
- Dual pane anti-fog / anti-scratch replaceable lens
- UV 380 coated lens
- Hi-Def yellow lens offers enhanced visibility
- Silicone beaded strap maintains proper strap placement
- Micro-Fiber carry bag included

Goggle Colors	
	PART #
6. Red	453-8400
7. Blue	453-8401
8. Black	453-8402
9. Matte Black	453-8403
10. Reflex Blue	453-8404
11. Magenta	453-8405
Replacement Lenses for Launch Goggles	
Dbi Lens Clear	453-9122A
Dbi Lens Smoke	453-9122B
Dbi Lens Yellow	453-9122C
Dbi Lens Blue	453-9122D
Dbi Lens Red	453-9122E
Dbi Lens Mirror Red	453-9122F
Dbi Lens Mirror Blue	453-9122G
Dbi Lens Mirror Silver	453-9122H



# 2014 KINI-Red Bull Winter Apparel



- Pre-curved fit
- Robust coated Cordura 600D for toughest abrasion wear.
- tear resistant 420D Nylon Dobby.
- three -layer membrane insulation .
- Removable inner jacket.
- Heavy Duty YKK zippers for durability.
- Elaborately embroidered 3D logos.

By purchasing this suit you are supporting the Wings for Life. Wings for Life is a nonprofit research foundation with the aim of promoting scientific progress and medical research to cure spinal cord injury as a result of spinal cord injury.

### Kini Red Bull Jacket - Retail \$329.95-H

Small	Medium	Large	XL	2XL
402-6200	402-6201	402-6202	402-6203	402-6204

### Kini Red Bull Pant - Retail \$299.95-H

Small	Medium	Large	XL	2XL
402-6210	402-6211	402-6212	402-6213	402-6214







**KINI-RB  
COLLECTION**

**MX - HELMETS & GOGGLES**

Size	Part #
XS / 54	402-0106
SM / 56	402-0107
MD / 58	402-0108
LG / 60	402-0109
XL / 62	402-0110
2XL / 64	402-0111



**KINI-RB COMPETITION COMPOSITE LITE** \$349.95-H

First class, redesigned helmet that meets and exceeds the strictest standards. Together with the lightweight construction from a compound of fibreglass and carbon, it provides maximum protection. An efficient ventilation system transports heat and moisture outwards.

- Removable, washable, sweat absorbent and antibacterial inner lining
- Rubber goggle guide.
- ECE/DOT 22-05 tested
- Compliant with AMA and FIM racing standards



**KINI-RB COMPETITION GOGGLE** 402-0002 \$69.95-H

Innovative ergonomic design with nose protection

- Triple layer face foam
- Multi colour strap with anti-slip silicone grip
- TPU frame with flexible strap brackets
- Clear and shatter resistant polycarbonate lens

**KINI-RB COMPETITION FIBREGLASS HELMET** \$299.95-H

Off-road helmet with fibreglass outer shell. An efficient ventilation system transports heat and moisture outward. Large field of vision with a ventilated visor

- Removable, washable, sweat absorbent and antibacterial inner lining
- Double-D closure.
- Rubber goggle guides.
- Removable cheek pads
- ECE/DOT 22-05 tested



Size	Part #
XS / 54	402-0100
SM / 56	402-0101
MD / 58	402-0102
LG / 60	402-0103
XL / 62	402-0104
2XL / 64	402-0105





**KINI-RB REVOLUTION HELMET**

\$299.95-H

Off-road helmet with fiberglass outer shell. An efficient ventilation system transports heat and moisture outward. Large field of vision with a ventilated visor

- Removable, washable, sweat absorbent and antibacterial inner lining
- Double-D closure.
- Rubber goggle guides.
- Removable cheek pads
- ECE/DOT tested

Size	Part #
XS / 54	402-0130
SM / 56	402-0131
MD / 58	402-0103
LG / 60	402-0133
XL / 62	402-0134
2XL / 64	402-0135



**KINI-RB REVOLUTION GOGGLE**

402-0003

\$69.95-H

Professional Cross Goggles with Ram air venting system.

- Triflex® advance composite super anti-fog supravision®



**KINI-RB MX GOGGLE**

402-0001

\$79.95-H

- Triflex® advance composite super anti-fog supravision®



**KINI-RB  
COLLECTION**

**MEN MX JACKETS**

**KINI-RB COMPETITION JACKET \$224.95-H**

High-quality offroad jacket with removable sleeves

- Cargo pocket for stowing the sleeves on the back
- 3-D embroidery and sublimation graphics
- Sleeve pocket with zip fastener and vent holes on the back
- Velvety collar made from micro-woven nylon, adjustable fastener
- Mesh lining for improved air circulation
- Cuffs with adjustable velcro fastener on the wrist
- Ventilation zips on back and shoulders
- Drawstring for adjusting the width at the waist
- TPR patch for hydration tube on the chest
- YKK® front zips with branded zip-pulls



A.



B.



	SM/48	MD/50	LG/52	XL/54	2XL/56	3XL/58
A.	402-0331	402-0332	402-0333	402-0334	402-0335	402-0336
B.	402-0311	402-0312	402-0313	402-0314	402-0315	sold out

**MEN MX GLOVES**

**KINI-RB MX GLOVES \$54.95-H**

High-quality MX gloves in the KINI-Red Bull design.

- Artificial leather padded palm.
- Padded and reinforced thumb panel.
- Directly embossed rubber surfaces on fingers and wrist.
- Pressed silicone finger tips for optimum grip.
- Pre-formed fingers.
- Lycra finger sidewalls for a perfect fit.
- Air-mesh fabric for efficient air circulation.
- Short neoprene cuffs with TPR hook-and-loop fastener.



C.



D.



E.

SIZES	SM	MD	LG	XL	2XL
Mens Sizes	8	9	10	11	12
C.	402-0440	402-0441	402-0442	402-0443	402-0444
D.	402-0426	402-0427	402-0428	402-0429	402-0430
E.	402-0431	402-0432	402-0433	402-0434	402-0435



**MEN MX - COMPETITION PANT**



**A.**



**KINI-RB MX COMPETITION PANTS \$209.95-H**

MX pants in an ergonomically pre-shaped fit. Reinforced seat area in 100D Cordura Nylon. Movable, newly developed knee with stretch for a better fit

- Heat and abrasion resistant leather knee panels and TPR inserts.
- Quattro stretch spandex on the calf, knee and crotch for maximum comfort.
- Air Mesh and TPR waist area.
- Hip belt for a secure fit.
- Ventilated lining over the entire length, supported by knee intakes.
- Elastic, open ankle cuffs.
- Reinforced seams in all critical areas.

PANT	SM/30	MD/32	LG/34	XL/36	2XL/38	3XL/40
A.	402-0531	402-0532	402-0533	402-0534	402-0535	402-0536
B.	sold out	402-0522	402-0523	402-0524	402-0525	402-0526
C.	402-0511	402-0512	402-0513	402-0514	402-0515	402-0513



**B.**



**C.**



**KINI-RB COMPETITION BAGGY PANT \$209.95-H**

- Wide cut construction baggy pant in a nylon main body construction with 1000 D seat panel, 1680 D ballistic left knee panel and reinforced heat resistant Kevlar right knee protection.
- Over the boot lower leg design with side zipped closure. Zip-off lower legs.
- Stretch panels above the knee, at back yoke and crotch area.
- Two large side cargo pockets.
- Sublimated side stretch panels on the waist.
- Adjustable waist.
- Full Length vented mesh liner.



**D.**



PANT	SM/30	MD/32	LG/34	XL/36	2XL/38	3XL/40
D.	402-0631	402-0632	402-0633	402-0634	402-0635	402-0636



**KINI-RB  
COLLECTION**

**MENS MX - REVOLUTION**



**KINI-RB MX REVOLUTION SHIRTS  
\$69.95-H**

Raglan-style MX shirt with mesh. Redesigned sleeve for greater freedom of movement

- Panels under the arms for improved air circulation
- Sublimated, non-fading, allover printing technique
- Padded panels on the elbows
- Extended back
- Elastic seams with safety stitching
- 100% polyester microfibre



**A.**

**KINI-RB MX REV PANTS**

**\$209.95-H**

MX pants in an ergonomically pre-shaped fit. Reinforced seat area in 100D Cordura Nylon. Movable, newly developed knee with stretch for a better fit

- Heat and abrasion resistant leather knee panels and TPR inserts.
- Quattro stretch spandex on the calf, knee and crotch for maximum comfort.
- Air Mesh and TPR waist area.
- Hip belt for a secure fit.
- Ventilated lining over the entire length, supported by knee intakes.
- Elastic, open ankle cuffs.
- Reinforced seams in all critical areas.
- YKK front zip



**B.**

SHIRT	SM	MD	LG	XL	2XL	3XL
A.	402-0251	402-0252	402-0253	402-0254	402-0255	402-0256
PANT	SM/30	MD/32	LG/34	XL/36	2XL/38	3XL/40
B.	402-0641	402-0642	402-0643	402-0644	402-0645	402-0646



**KINI-RB YOUTH STRIKE SHIRT**

**\$55.95-H**

Raglan-style MX shirt with mesh. Redesigned sleeve for greater freedom of movement

- Panels under the arms for improved air circulation
- Sublimated, non-fading, allover printing technique
- Padded panels on the elbows
- Extended back
- Elastic seams with safety stitching
- 100% polyester microfibre

**KINI-RB YOUTH STRIKE PANT**

**\$169.95-H**

MX pants in an ergonomically pre-shaped fit. Reinforced seat area in 100D Cordura Nylon. Movable, newly developed knee with stretch for a better fit

- Heat and abrasion resistant leather knee panels and TPR inserts.
- Quattro stretch spandex on the calf, knee and crotch for maximum comfort.
- Air Mesh and TPR waist area.
- Hip belt for a secure fit.
- Ventilated lining over the entire length, supported by knee intakes.
- Elastic, open ankle cuffs.
- Reinforced seams in all critical areas.
- YKK front zip
- Adjustable waist.
- Full length vented mesh liner.

	SM	MD	LG	XL
Shirt	402-1041	402-1042	402-1043	402-1044
	SM/22	MD/24	LG/26	XL/28
Pant	402-1046	402-1047	402-1048	402-1049



**CASUAL**

**KINI-RB JUNIOR TEAM TEE SHIRTS \$39.95-H**

Single Jersey Tee Shirt with contrasting panels on the shoulder and chest, embroidered emblems on sleeve.

- 100% cotton
- woven neck band

**A.**



**B.**



Color	SM	MD	LG
A. Navy/Orange	403-2005	403-2006	403-2007
B. Navy/Grey	403-2008	403-2009	403-2010

**KINI-RB JUNIOR HOODIE \$90.95-H**

Hooded sweat jacket featuring graphic motif on front and mixed fabric hood. Wings for Life motif printed on the sleeve.

- shape retentive cotton mix fabric

	SM	MD	LG
C. Team	403-2011	403-2022	
D. Matched	403-2038	403-2039	403-2040

**C.**



**D.**



**KINI-RB CROWN HOODIE \$104.95-H**

Beautifully cut hooded jacket with large Kini-Red Bull design spanning front front to back. 'Wings for life' logo on sleeves.

- 70% cotton / 30% polyester

	SM	MD	LG	XL	2XL
	403-0481	403-0482	403-0483	403-0484	403-0485



**KINI-RB TEAM TEE SHIRTS \$39.95-H**

Single Jersey Tee Shirt with contrasting panels on the shoulder and chest, embroidered emblems on sleeve.

- 100% cotton

	SM	MD	LG	XL
	403-0306	403-0307	403-0308	403-0309



**KINI-RB  
COLLECTION**

**MENS CASUAL COLLECTION**



**KINI-RB TEAM SOFTSHELL JACKET \$164.95-H**

Sporty softshell jacket.

- 100% Softshell
- Lining is 100% micro-fleece
- Stand-up collar, contrast-to-use side
- Side pockets with water repellent zips, membrane 3000/3000
- Printed badge on his sleeve
- Pressure and stick Combination on front
- Kini Red Bull on back.



MENS SIZES	SM	MD	LG	XL	2XL
	403-0296	403-0297	403-0298	sold out	403-0300

**KINI-RB RIPPED SWEAT JACKET \$104.95-H**

Beautifully cut sweater with two front pockets and a large front-end. Wings for Life logo embroidered on the sleeve, zipped through Kini logo, woven neck ribbon. Brushed interior, cotton blend.

- 70% cotton / 30% polyester



MENS SIZES	SM	MD	LG	XL	2XL
	403-0356	403-0357	403-0358	403-0359	403-0360



**A.**

**KINI-RB HOODIES**

**\$104.95-H**

Intricately designed hooded jacket with two side pockets and hood lined in contrasting colour. Front print . Additional print on hood, Wings For Life print on sleeve

- 70% cotton / 30% polyester

MENS SIZES	SM	MD	LG	XL	2XL
1. Black N White	403-0371	403-0372	403-0373	403-0374	sold out
2. Stripes	sold out	403-0342	403-0343	403-0344	403-0345
3. Banger	403-0216	403-0217	403-0218	403-0219	403-0220
4. Matched	403-0346	403-0347	403-0348	403-0349	403-0350
5. Motorparts	403-0361	403-0362	403-0363	403-0364	403-0365



**B.**



**C.**



**D.**



**E.**



**KINI-RB TRACKED TEE SHIRTS**

**\$39.95-H**

Tee Shirt with multi-coloured front motif and small print motif on back of neck.  
Kini Red Bull woven label on sleeve and small Wings for Life print.

- High quality single jersey fabric
- 100% cotton
- woven neck band



TRACKED TEE SHIRT	SM	MD	LG	XL	2XL
Black	403-0426	403-0427	403-0428	403-0429	403-0430
Sand	403-0431	403-0432	403-0433	403-0434	403-0435

**KINI-RB TEE SHIRTS**

**\$39.95-H**

Tee Shirt with cool print graphic on front, Kini Red Bull woven label on the sleeve and small wings for life print on the sleeve.

- High quality single jersey fabric, 100% cotton
- woven neck band



1.

MENS SIZES	SM	MD	LG	XL	2XL
1. Rock	403-0146	403-0147	403-0148	403-0149	403-0150
2. Can Can	403-0161	403-0162	403-0163	403-0164	403-0165
3. Trick	403-0151	403-0152	403-0153	403-0154	403-0155
4. Classic	403-0506	403-0507	403-0508	403-0509	403-0510
5. Tech	403-0421	403-0422	403-0423	403-0424	403-0425
6. Sliced	403-0176	403-0177	403-0178	403-0179	403-0180

6.



2.



4.



3.



5.







**KINI-RB  
COLLECTION**

**MENS CASUAL COLLECTION**

**KINI-RB TEE SHIRTS**

**\$39.95-H**

Tee Shirt with multi-coloured front motif and small print motif on back of neck. Kini Red Bull woven label on sleeve and small Wings for Life print.

- High quality single jersey fabric
- 100% cotton
- woven neck band



MENS SIZES	SM	MD	LG	XL	2XL
1. Barbwire Black	403-0591	403-0592	403-0593	403-0594	403-0595
2. Barbwire White	403-0581	403-0582	403-0583	403-0584	403-0585
3. Classic Trash Blue	403-0561	403-0562	403-0563	403-0564	403-0565
4. Classic Trash Black	403-0571	403-0572	403-0573	403-0574	403-0575
5. Explode	403-0531	403-0532	403-0533	403-0534	403-0535



**KINI-RB CROWN TEE SHIRTS \$39.95-H**

Tee Shirt with multi-coloured front motif. Kini Red Bull woven label on sleeve and small Wings for Life print on cuff.

- High quality single jersey fabric
- 100% cotton
- woven neck band



CROWN TEE SHIRT	SM	MD	LG	XL	2XL
White	403-0401	403-0402	403-0403	403-0404	403-0405
Black				403-0414	
Grey	403-0451	403-0452	403-0453	403-0454	403-0455

**KINI-RB  
COLLECTION**



**KINI-RB MOTORPARTS TEE SHIRTS \$39.95-H**

Tee Shirt with multi-coloured front motif. Kini Red Bull woven label on sleeve and small Wings for Life print on cuff.

- High quality single jersey fabric
- 100% cotton
- woven neck band

MOTORPARTS TEE SHIRT	SM	MD	LG	XL	2XL
Blue	403-0166	403-0167	403-0168	403-0169	403-0170
White	403-0171	403-0172	403-0173	403-0174	403-0175



**WOMENS CASUAL COLLECTION**



**KINI-RB LADIES HOODED SWEAT JACKET \$104.95-H**

Sporty, multi-coloured hooded sweat jacket with side slit pockets. All-over print on sleeves and hood. Kini Red Bull motif on front.

- 70% cotton / 30% Polyester



MD	LG	XL
403-0902	403-0903	403-0904

**KINI-RB LADIES FLEECE HOODIE \$104.95-H**

Stylish micro-polar fleece jacket with graphics printed on sleeve and crown embroidery on front. Wings for Life logo on the back.

- 100% Polyester

SM	MD	LG	XL
403-0971	403-0972	403-0973	403-0974



**LADIES BRANCHES HOODIE \$104.95-H**

Stylish multi-coloured hooded sweat jacket with printed branches graphics on front and back. Kini Red Bull motif on front and Wings for Life motif on sleeve.

- 70% cotton / 30% Polyester

SM	MD	LG
403-0921	403-0922	403-0923





**KINI-RB  
COLLECTION**

**WOMENS CASUAL COLLECTION**

**KINI-RB LADIES TEE SHIRTS**

**\$39.95-H**

Stylish Tee Shirt with multi-coloured print on front.  
Web label on sleeve and Wings for Life print opposite sleeve.  
Comfortable to wear.

- 95% cotton / 5% elastane
- woven neck band



**1.**



**2.**



**3.**



**4.**

Color	SM	MD	LG	XL
1. Splattro	403-0816	403-0817	403-0818	403-0819
2. Tatroo Black	403-0846	403-0847	403-0848	403-0849
3. Tatroo White	403-0836	403-0837	403-0838	403-0839
4. Shiftlet	403-0860	403-0861	403-0862	403-0863

**KINI-RB DIAMOND TEE SHIRTS**

**\$39.95-H**

Stylish Tee Shirt with multi-coloured print on front.  
Wings for Life print on sleeve.

- 100% cotton
- woven neck band



Color	SM	MD	LG	XL
White	403-0821	403-0822	403-0823	403-0824
Black	403-0841	403-0842	403-0843	403-0844



**ACCESSORIES**

**CAPS / BEANIES**



**VISOR BEANIE**

403-0020 \$39.95-H



**REVERSIBLE BEANIE**

403-0021 \$37.95-H



**CROWN BEANIE**

403-0024 \$34.95-H



**VISOR BEANIE**

403-0026 \$34.95-H



**TRACKED BEANIE**

403-0031 \$34.95-H



**DOUBLE FACE BEANIE**

403-0029 \$34.95-H



**CLASSIC EXPLOSION**

403-0036 \$34.95-H



**CLASSIC CROWN**

403-0037 \$34.95-H



**TEAM CAP**

Adult 403-0044 \$27.95-H  
Youth 403-2104 \$27.95-H



**RACER CAP**

S/M 403-0032 \$39.95-H  
L/XL 403-0033 \$39.95-H



**TEAM CAP**

Adult 403-0035 \$34.95-H  
Youth 403-2101 \$34.95-H



**SOLDIER EXPLOSION**

403-0038 \$34.95-H



**SOLDIER CROWN**

403-0039 \$34.95-H



**TRUCKER CAP**

403-0045 \$39.95-H



**MATCHED CAP**

Adult 403-0048 \$37.95-H  
Youth 403-2106 \$37.95-H



**RACER CROWN CAP**

S/M 403-0040 \$39.95-H  
L/XL 403-0041 \$39.95-H



**RACER YELLOW CAP**

S/M 403-0042 \$39.95-H  
L/XL 403-0043 \$39.95-H



**TIRE CAP**

S/M 403-0046 \$39.95-H  
L/XL 403-0047 \$39.95-H  
Youth 403-2105 \$39.95-H



**KINI-RB  
COLLECTION**

**ACCESSORIES**



**KINI RED BULL BELT**  
403-0000 \$39.95-H



**Limited  
Stock**

**KINI RED BULL BELT**  
403-0001 \$69.95-H



**KINI RED BULL BEACH TOWEL**  
403-0010 \$49.95-H



**KINI RED BULL  
NECK BUFF**  
403-0005 \$29.95-H



**KINI RED BULL  
STRIPE NECK BUFF**  
403-0007 \$24.95-H



**KINI RED BULL  
CROWN NECK BUFF**  
403-0006 \$24.95-H



**KINI RED BULL BEACH TOWEL**  
403-0011 \$44.95-H



**KINI RED BULL LANYARD**  
403-0015 \$19.95-H



**KINI RED BULL WALLET**  
403-0016 \$29.95-H



**KINI RED BULL BACKPACK**  
403-0009 \$69.95-H



**ACE GOGGLE**

**LAUNCH GLOVE**

**FORCE BOOT**

**CALIBER SBJACKET**

**FACTORBIB PANT**

Castle X DESIGNED PRINTS



[www.castle-x.ca](http://www.castle-x.ca)