

COSTIEX

2016



 **TIME SENSITIVE**
EFFECTIVE
TILL MARCH 15, 2015

SIZING GUIDES

CASTLE X APPAREL *All measurement in inches.*

MENS		XSM	SML	MED	LRG	XLG	2XL	3XL	4XL	5XL
JACKET	Chest	33-35	36-38	39-41	42-44	46-48	50-52	54-56	58-60	61-63
	Hip	32-34	35-37	38-40	41-43	45-47	49-51	53-55	56-57	60-63
	Arm Length	34½	36¼	37¼	38	38¾	39¼	39½	39½	39½

* Short jacket sizes are designed to fit a body 5'3" -5'7" with a short torso and sleeve length. The torso length is 2" shorter and sleeves are 2.5" shorter than the regular sizes.

PANT	Waist	28-30	30-32	32-34	35-37	38-40	41-43	48-50	54-56	60-64
	Inseam	30	32	33	34	34	34	34	34	---
	SHORT Inseam	---	---	---	32	32	32	32	---	---
	TALL Inseam	---	---	---	37	37	---	---	---	---

WOMENS		XSM	SML	MED	LRG	XLG	2XL
JACKET	Size	0-2	4-6	8-10	12-14	16-18	20-22
	Bust	34½-36	36½-38	38½-40	40½-42½	43-45½	46-48½
	Waist	30-32	32½-34	34½-36	36½-38½	39-41½	42-44½
	Hip	36½-38	38½-40	40½-42	42½-44½	45-47½	48-50½
	Arm Length	28	29	30	31	31	32

PANT	Waist	24	26	28	30	32	36
	Inseam	30	31	32	33	33	33
	SHORT Inseam	---	---	28	28	28	28

WOMENS PLUS		1W	2W	3W	4W
JACKET	Bust	43-45	45½-47	47½-49	52-58½
	Waist	40½-42½	43-44	44½-45½	49-55½
	Hip	47½-49½	50-51	51½-52½	55½-62
	Arm Length	31	31	32	32

YOUTH		XSM	SML	MED	LRG	XLG
JACKET	Size	4-6	7-8	10-12	14-16	18-20
	Height	41-48	50-53	54-60	61-65	65-68
	Chest	24-26	27-29	30-31	32-34	36-38
	Waist	20-23	24	25-26	27-28	28½-29½
	Hip	23-25	26-27	28½-30	31½-33	34-35½
	Arm Length	18½-21½	23-24½	25½-27½	29-30½	30-31
	Inseam	17½-21	22	23½-26	27½-29	29½-30½

TODDLER		2T	3T	4T	5T
JACKET	Height	33-35½	36-38½	39-42	42-45
	Weight (lbs)	27-29	30-33	34-38	39-44

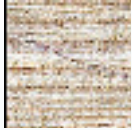
CASTLE GLOVES *All measurement in inches.*

MENS		XSM	SML	MED	LRG	XLG	2XL	3XL
Length		7-7½	7½-8	8-8¼	8¼-8½	8½-8¾	8¾-9	9-9½
	Width	4¼	4½	4¾	4¾	5	5¼	5¼

WOMENS		XSM	SML	MED	LRG	XLG	2XL
Length		6½-7	7-7¼	7¼-7½	7½-7¾	7¾-8	8-8¼
	Width	4	4¼	4¼	4¼	4½	4¾

YOUTH		SML	MED	LRG
Length		5½-6	6-6¼	6¼-6½
	Width	3¾	4	4¼

TODDLER		2T	4T	6T
Length		5-5¼	5¼-5½	7½-6
	Width	3	3¼	3½



Matching Bib Pants
See Page 23

THRUST

Retail \$459.95 - I (SM-2XL)
\$479.95 - I (3XL)



INSULATION: Wearable high performance inner jacket incorporates ultra warm 3M™ Thinsulate™ Platinum insulation (150g body/120g sleeve)

WATERPROOFING: Outer shell incorporates a high performance dual stage 10,000mm/10,000g/m² waterproof/breathable system. DWR coated.

[Stage 1] Ven-Tex® 2.0 waterproof/breathable laminated shell materials

[Stage 2] Fully Seam Sealed Ven-Tex® 3.0 waterproof/breathable laminate membrane liner with air flow ports to allow for functional ventilation

FEATURES:

- Backcountry Series: designed to excel in both off or on trail riding conditions
- 3-in-1 shell construction incorporates wearable puff-style insulated removable jacket
- Critical seam sealed shell
- Comfort-Flow™ polyester mesh lining
- Backpack friendly 2-way core & sleeve
- Ventec® vents with snow blocker mesh
- Integrated goggle wipe
- Internal Lycra® hand gaiters
- Zippered internal cap and chest storage pockets
- 3M™ Scotchlite™ Reflective materials
- Fleece lined cuffs and insulated shock cord adjustable collar with chin saver placket
- Wind blocking magnetic/snap front placket
- Heavy Duty YKK main zipper
- Durable water resistant zippers on pockets and vents
- Velcro® adjustable cuffs
- Removable zip-out stretch powder skirt
- Shock cord adjustable hem
- 2 Tether D-Rings
- Soft touch fleece lined collar and cuffs

	SML	MED	LRG	XLG	2XL	3XL
CHEST SIZE	36-38	39-41	42-44	46-48	50-52	54-56
Hi-Vis	70-9652	70-9654	70-9656	70-9658	70-9659	70-9659T
Gray	70-9662	70-9664	70-9666	70-9668	70-9669	70-9669T
Black	70-9672	70-9674	70-9676	70-9678	70-9679	70-9679T
Orange	70-9682	70-9684	70-9686	70-9688	70-9689	70-9689T



Wearable Puff-Style Liner



Hi-Vis

THRUST

Retail \$ \$459.95 - I (SM-2XL)
\$479.95 - I (3XL)



Gray



Black



Orange





MEN'S

FORCE

Retail \$389.95 - I (SM-2XL)
\$409.95 - I (3XL)

Thinsulate Platinum INSULATION



INSULATION: High performance non-insulated waterproof/breathable shell with a removable 3M™ Thinsulate™ Platinum Insulation 120 g liner

WATERPROOFING: Outer polyester/nylon shell incorporates Ven-Tex® 2.0 windproof, waterproof, breathable laminated shell materials (8,000mm/8,000g/m2) and DWR coating



Hi-Vis/Gray



FEATURES:

- Backcountry Series: Designed to excel in both off or on trail riding conditions
- Critical seams sealed
- Comfort-Flow™ polyester mesh lining
- Backpack friendly Ventec® front & back vents with snow blocker mesh
- Integrated goggle wipe
- Internal Lycra® hand gaiters
- 3M™ Scotchlite™ Reflective materials
- Heavy Duty YKK main zip
- Zippered internal cap pocket plus dual Spandex™ storage pockets
- Windblocking magnetic/snap front placket
- Fleece lined cuffs and insulated shock cord adjustable collar with chin saver placket
- Velcro® adjustable cuffs
- Removable zip-out stretch powder skirt
- Shock cord adjustable hem
- Tether D-Ring



	SML	MED	LRG	XLG	2XL	3XL
CHEST SIZE	36-38	39-41	42-44	46-48	50-52	54-56
Blue/Orange	70-9522	70-9524	70-9526	70-9528	70-9529	70-9529T
Hi-Vis/Gray	70-9532	70-9534	70-9536	70-9538	70-9539	70-9539T
Black/Hi-Vis	70-9552	70-9554	70-9556	70-9558	70-9559	70-9559T
Black/White	70-9572	70-9574	70-9576	70-9578	70-9579	70-9579T



Blue/Orange



Black/Hi-Vis



Black/White

castlex

MEN'S



FORCE REALTREE®

Retail \$439.95 - I (SM-2XL)
\$469.95 - I (3XL)



INSULATION: High performance non-insulated waterproof/breathable shell with a removable 3M™ Thinsulate™ Platinum Insulation 120 g liner

WATERPROOFING: Outer polyester/nylon shell incorporates Ven-TEX® 2.0 windproof, waterproof, breathable laminated shell materials (8,000mm/8,000g/m2) and DWR coating

FEATURES:

- Backcountry Series: designed to excel in both off or on trail riding conditions
- Comfort-Flow™ polyester mesh lining
- Backpack friendly Ventec® front & back vents with snow blocker mesh
- Integrated goggle wipe
- Internal Lycra® hand gaiters
- 3M™ Scotchlite™ Reflective materials
- Zippered internal cap pocket plus dual Spandex™ storage pockets
- Critical seams sealed
- Windblocking magnetic/snap front placket
- Fleece lined cuffs and insulated shock cord adjustable collar with chin saver placket
- Heavy Duty YKK main zip
- Velcro® adjustable cuffs
- Removable zip-out stretch powder skirt
- Shock cord adjustable hem
- Tether D-Ring

	SML	MED	LRG	XLG	2XL	3XL
CHEST SIZE	36-38	39-41	42-44	46-48	50-52	54-56
Realtree®	70-9592	70-9594	70-9596	70-9598	70-9599	70-9599T





CHARGE REALTREE® G2

Retail \$409.95 - I (SM-2XL)
\$439.95 - I (3XL)



INSULATION: 3M™ Thinsulate™ Platinum Insulation (160 g body/100 g sleeve) in shell and a removable 3M™ Thinsulate™ Extra Warmth Insulation 60 g liner (overall combined insulation 220 g body/160 g sleeve)

WATERPROOFING: Ultra tough polyester and nylon shell with Ven-TEX® 2.0 windproof, waterproof, breathable laminate and DWR coating

FEATURES:

- Critical seams sealed
- Ventec® 2-way core vents with snow blocker mesh
- Comfort-Flow™ polyester mesh lining
- Integrated goggle wipe
- Internal Lycra® hand gaiters
- 3M™ Scotchlite™ Reflective materials
- Double stitched seams
- Zippered internal cap pocket plus dual Spandex™ storage pockets
- Fleece lined cuffs & insulated collar with chin saver placket
- Magnetic front placket
- Velcro® adjustable cuffs
- Dropback design with shock cord adjustable collar & hem
- Tether D-Ring

	SML	MED	LRG	XLG	2XL	3XL
CHEST SIZE	36-38	39-41	42-44	46-48	50-52	54-56
Realtree Xtra®	70-9492	70-9494	70-9496	70-9498	70-9499	70-9499T



Realtree Xtra®



MEN'S





CHARGE G2B

Retail \$379.95 - I (SM-2XL)
\$409.95 - I (3XL-5XL)

Thinsulate Platinum INSULATION

Thinsulate INSULATION

INSULATED REMOVABLE LINER



New! Flo Orange



INSULATION: 3M™ Thinsulate™ Platinum Insulation (160 g body/100 g sleeve) in shell and a removable 3M™ Thinsulate™ Extra Warmth Insulation 60 g liner (overall combined insulation 220 g body/160 g sleeve)

WATERPROOFING: Ultra tough polyester and nylon shell with Ven-Tex® 2.0 windproof, waterproof, breathable laminate and DWR coating

FEATURES:

- Critical seams sealed
- Ventec® 2-way core ventilation with snow blocker mesh
- Comfort-Flow™ polyester mesh lining
- Integrated goggle wipe
- Internal Lycra® hand gaiters
- 3M™ Scotchlite™ Reflective materials
- Zippered internal cap pocket plus dual Spandex™ storage pockets
- Double stitched seams & Tether D-Ring
- Fleece lined cuffs and insulated collar with chin saver placket
- Magnetic front placket
- Velcro® adjustable cuffs
- Dropback design with shock cord adjustable collar & hem

	SML	MED	LRG	XLG	2XL	3XL	4XL	5XL
CHEST SIZE	36-38	39-41	42-44	46-48	50-52	54-56	58-60	61-63
Red	70-9312	70-9314	70-9316	70-9318	70-9319	70-9319T	--	--
Blue	70-9322	70-9324	70-9326	70-9328	70-9329	70-9329T	--	--
Yellow	70-9332	70-9334	70-9336	70-9338	70-9339	70-9339T	--	--
Green	70-9342	70-9344	70-9346	70-9348	70-9349	70-9349T	--	--
Hi-Vis	70-9352	70-9354	70-9356	70-9358	70-9359	70-9359T	--	--
Flo Orange	70-9362	70-9364	70-9366	70-9368	70-9369	70-9369T	--	--
Black	70-9372	70-9374	70-9376	70-9378	70-9379	70-9379T	70-9379X	70-9379Z

*New Color Available • Also Available in Women's Sizes



Red

Blue

Yellow

Green

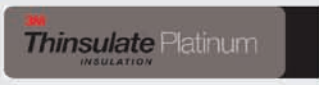
Hi-Vis

Black



CHARGE G2C

Retail \$379.95 - I (SM-2XL)
\$409.95 - I (3XL-5XL)



INSULATION: 3M™ Thinsulate™ Platinum Insulation (160 g body/100 g sleeve) in shell and a removable 3M™ Thinsulate™ Extra Warmth Insulation 60 g liner (overall combined insulation 220 g body/160 g sleeve)

WATERPROOFING: Ultra tough polyester and nylon shell with Ven-Tex® 2.0 windproof, waterproof, breathable laminate and DWR coating



Red

FEATURES:

- Critical seams sealed
- Ventec® 2-way core vents with snow blocker mesh
- Comfort-Flow™ polyester mesh lining
- Integrated goggle wipe
- Internal Lycra® hand gaiters
- 3M™ Scotchlite™ Reflective materials
- Double stitched seams
- Zippered internal cap pocket plus dual Spandex™ storage pockets
- Fleece lined cuffs & insulated collar with chin saver placket
- Magnetic front placket
- Velcro® adjustable cuffs
- Dropback design with shock cord adjustable collar & hem
- Tether D-Ring

	SML	MED	LRG	XLG	2XL	3XL	4XL	5XL
CHEST SIZE	36-38	39-41	42-44	46-48	50-52	54-56	58-60	61-63
Red	70-9412	70-9414	70-9416	70-9418	70-9419	70-9419T	--	--
Blue	70-9422	70-9424	70-9426	70-9428	70-9429	70-9429T	--	--
Yellow	70-9432	70-9434	70-9436	70-9438	70-9439	70-9439T	--	--
Green	70-9442	70-9444	70-9446	70-9448	70-9449	70-9449T	--	--
Hi-Vis	70-9452	70-9454	70-9456	70-9458	70-9459	70-9459T	--	--
Orange	70-9462	70-9464	70-9466	70-9468	70-9469	70-9469T	--	--
Black	70-9472	70-9474	70-9476	70-9478	70-9479	70-9479T	70-9479X	70-9479Z

Also Available in Women's Sizes



Blue



Yellow



Green



Hi-Vis



Orange



Black



SURGE PARKA

Retail \$339.95 - I (SM-2XL)
\$369.95 - I (3XL)

WATERPROOFING: Ultra tough soft-touch polyester shell with Ven-TEX® 2.0 windproof, waterproof, breathable laminate and DWR coating

FEATURES:

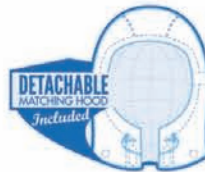
- Backcountry Series: designed to excel in both off or on trail riding conditions
- High performance uninsulated parka
- Comfort-Flow™ polyester mesh lining
- Backpack friendly Ventec® chest & back ventilation with snow blocker mesh
- Integrated goggle wipe
- Internal Lycra® hand gaiters
- 3M™ Scotchlite™ Reflective materials
- Zippered internal cap pocket plus dual Spandex™ storage pockets
- Fully seam sealed
- Fleece lined cuffs and insulated shock cord adjustable collar with chin saverplacket
- Magnetic front placket
- Exposed water resistant zippers
- Velcro® adjustable cuffs
- Removable zip-out stretch powder skirt
- Shock cord adjustable hem
- Removable 3-point adjustable hood
- Tether D-Ring



Dark Gray/Hi-Vis



	SML	MED	LRG	XLG	2XL	3XL
CHEST SIZE	36-38	39-41	42-44	46-48	50-52	54-56
Dark Gray/Hi-Vis	70-0552	70-0554	70-0556	70-0558	70-0559	70-0559T
Gray/Reflex Blue	70-0562	70-0564	70-0566	70-0568	70-0569	70-0569T



Gray/Reflex Blue



LAUNCH REALTREE® G3

Retail \$369.95 - I (SM-2XL)
\$399.95 - I (3XL)



INSULATION: 3M™ Thinsulate™ Extra Warmth Insulation (150 g body/100 g sleeve) in shell and a removable 3M™ Thinsulate™ Extra Warmth Insulation 60 g liner (overall combined insulation 210 g body/160 g sleeve)

WATERPROOFING: Ultra tough polyester and nylon shell with Ven-Tex® 1.0 windproof, waterproof, breathable and DWR coatings

FEATURES:

- Critical seams sealed
- Ventec® 2-way zippered core vents with snow blocker mesh
- Comfort-Flow™ polyester mesh lining
- Internal Lycra® hand gaiters
- Zippered internal cap pocket plus dual Spandex™ storage pockets
- 3M™ Scotchlite™ Reflective materials
- Double stitched seams
- Fleece lined cuffs & insulated collar
- Velcro® adjustable cuffs
- Internal powder skirt
- Dropback design with shock cord adjustable hem
- Tether D-Ring

	SML	MED	LRG	XLG	2XL	3XL
CHEST SIZE	36-38	39-41	42-44	46-48	50-52	54-56
Realtree AP® Snow	70-9792	70-9794	70-9796	70-9798	70-9799	70-9799T



Realtree AP® Snow



**REALTREE®
APS**



Matching Pants
See Page 25

MEN'S



LAUNCH KRYPTTEK™ G3

Retail \$429.95 - I (SM-2XL)
\$459.95 - I (3XL)



INSULATION: 3M™ Thinsulate™ Extra Warmth Insulation (150 g body/100 g sleeve) in shell and a removable 3M™ Thinsulate™ Extra Warmth Insulation 60 g liner (overall combined insulation 210 g body/160 g sleeve)

WATERPROOFING: Ultra tough polyester and nylon shell with Ven-Tex® 1.0 windproof, waterproof, breathable and DWR coatings

FEATURES:

- Critical seams sealed
- Ventec® 2-way zippered core vents with snow blocker mesh
- Comfort-Flow™ polyester mesh lining
- Internal Lycra® hand gaiters
- Zippered internal cap pocket plus dual Spandex™ storage pockets
- 3M™ Scotchlite™ Reflective materials
- Double stitched seams
- Fleece lined cuffs & insulated collar
- Velcro® adjustable cuffs
- Internal powder skirt
- Dropback design with shock cord adjustable hem
- Tether D-Ring

	SML	MED	LRG	XLG	2XL	3XL
CHEST SIZE	36-38	39-41	42-44	46-48	50-52	54-56
Kryptek™ Yeti™	70-9912	70-9914	70-9916	70-9918	70-9919	70-9919T
Kryptek™ Typhon™	70-9922	70-9924	70-9926	70-9928	70-9929	70-9929T



Kryptek™ Yeti™

Kryptek™ Typhon™



Kryptek™ Yeti™ - Dark Gray



Kryptek™ Typhon™ - Red



LAUNCH SE G3

Retail \$329.95 - I (SM-2XL)
\$359.95 - I (3XL)



INSULATION: 3M™ Thinsulate™ Extra Warmth Insulation (150 g body/100 g sleeve) in shell and a removable 3M™ Thinsulate™ Extra Warmth Insulation 60 g liner (overall combined insulation 210 g body/160 g sleeve)

WATERPROOFING: Ultra tough polyester and nylon shell with Ven-Tex® 1.0 windproof, waterproof, breathable and DWR coatings



Green/Flo Orange



Matching Pants
See Page 26

FEATURES:

- Critical seams sealed
- Ventec® 2-way zippered core vents with snow blocker mesh
- Comfort-Flow™ polyester mesh lining
- Internal Lycra® hand gaiters
- Zippered internal cap pocket plus dual Spandex™ storage pockets
- 3M™ Scotchlite™ Reflective materials
- Double stitched seams
- Fleece lined cuffs and insulated collar
- Velcro® adjustable cuffs
- Internal powder skirt
- Dropback design with shock cord adjustable hem
- Tether D-Ring

	SML	MED	LRG	XLG	2XL	3XL
CHEST SIZE	36-38	39-41	42-44	46-48	50-52	54-56
Red/White	70-9812	70-9814	70-9816	70-9818	70-9819	70-9819T
Reflex Blue/White	70-9822	70-9824	70-9826	70-9828	70-9829	70-9829T
Green/Flo Orange	70-9842	70-9844	70-9846	70-9848	70-9849	70-9849T
Orange/Gray	70-9852	70-9854	70-9856	70-9858	70-9859	70-9859T
Black/White	70-9872	70-9874	70-9876	70-9878	70-9879	70-9879T
Flo Orange/Hi-Vis	70-9882	70-9884	70-9886	70-9888	70-9889	70-9889T

Also Available in Women's Sizes



Red/White



Reflex Blue/
White



Orange/Gray



Black/White



Flo Orange/Hi-Vis

LAUNCH G3

Retail \$329.95 - I (SM-2XL)
\$359.95 - I (3XL-4XL)



INSULATION: 3M™ Thinsulate™ Extra Warmth Insulation (150 g body/100 g sleeve) in shell and a removable 3M™ Thinsulate™ Extra Warmth Insulation 60 g liner (overall combined insulation 210 g body/160 g sleeve)

WATERPROOFING: Ultra tough polyester and nylon shell with Ven-Tex® 1.0 windproof, waterproof, breathable and DWR coatings



Blue

FEATURES:

- Critical seams sealed
- Ventec® 2-way zippered core vents with snow blocker mesh
- Comfort-Flow™ polyester mesh lining
- Internal Lycra® hand gaiters
- Zippered internal cap pocket plus dual Spandex™ storage pockets
- 3M™ Scotchlite™ Reflective materials
- Double stitched seams
- Fleece lined cuffs and insulated collar
- Velcro® adjustable cuffs
- Internal powder skirt
- Dropback design with shock cord adjustable hem
- Tether D-Ring

	SML	MED	LRG	XLG	2XL	3XL	4XL
CHEST SIZE	36-38	39-41	42-44	46-48	50-52	54-56	58-60
Red	70-9712	70-9714	70-9716	70-9718	70-9719	70-9719T	--
Blue	70-9722	70-9724	70-9726	70-9728	70-9729	70-9729T	--
Yellow	70-9732	70-9734	70-9736	70-9738	70-9739	70-9739T	--
Green	70-9742	70-9744	70-9746	70-9748	70-9749	70-9749T	--
Flo Orange	70-9752	70-9754	70-9756	70-9758	70-9759	70-9759T	--
Black	70-9772	70-9774	70-9776	70-9778	70-9779	70-9779T	70-9779X

Also Available in Women's Sizes



Red



Green



Yellow



Flo Orange



Black



BOLT REALTREE® G3

Retail \$335.95 - I (SM-2XL)
\$359.95 - I (3XL-4XL)

INSULATION: Fixed 3M™ Thinsulate™ Extra Warmth Insulation (200 g body/150 g sleeve)



WATERPROOFING: Ultra tough polyester and nylon shell with Ven-Tex® 1.0 windproof, waterproof, breathable and DWR coatings

FEATURES:

- Critical seams sealed
- Ventec® front & back zippered core vents with snow blocker mesh
- Internal Lycra® hand gaiters
- Zippered hand, internal & cap pockets
- Double stitched seams
- 3M™ Scotchlite™ Reflective materials
- Fleece lined cuffs & insulated collar
- Velcro® adjustable cuffs
- Internal powder skirt
- Dropback design
- Shock cord adjustable hem
- Tether D-Ring

	SML	MED	LRG	XLG	2XL	3XL	4XL
CHEST SIZE	36-38	39-41	42-44	46-48	50-52	54-56	58-60
Hi-Vis	70-8132	70-8134	70-8136	70-8138	70-8139	70-8139T	70-8139X
Orange	70-8182	70-8184	70-8186	70-8188	70-8189	70-8189T	70-8189X

Also Available in Women's Sizes



Hi-Vis



Orange

Castlex

MENS



Realtree Xtra®





BOLT REALTREE® G3

Retail \$325.95 - I (SM-2XL)
\$349.95 - I (3XL)



INSULATION: Fixed 3M™ Thinsulate™ Extra Warmth Insulation
(200 g body/150 g sleeve)

WATERPROOFING: Ultra tough polyester and nylon shell with Ven-Tex®
1.0 windproof, waterproof, breathable & DWR coatings



Realtree Xtra®



Black/Red

FEATURES:

- Critical seams sealed
- Ventec® front & back zippered core vents with snow blocker mesh
- Internal Lycra® hand gaiters
- Zippered hand, internal & cap pockets
- Double stitched seams
- Velcro® adjustable cuffs
- 3M™ Scotchlite™ Reflective materials
- Fleece lined cuffs and insulated collar
- Internal powder skirt
- Dropback design
- Shock cord adjustable hem
- Tether D-Ring

	SML	MED	LRG	XLG	2XL	3XL
CHEST SIZE	36-38	39-41	42-44	46-48	50-52	54-56
Blk/Red	70-8212	70-8214	70-8216	70-8218	70-8219	70-8219T
Blk/Blue	70-8222	70-8224	70-8226	70-8228	70-8229	70-8229T
Blk/Yellow	70-8232	70-8234	70-8236	70-8238	70-8239	70-8239T
Blk/Green	70-8242	70-8244	70-8246	70-8248	70-8249	70-8249T

Also Available in Women's Sizes



Black/Blue



Black/Yellow



Black/Green



BOLT G3

Retail \$299.95 - I (SM-2XL)
\$325.95 - I (3XL-5XL)



INSULATION: Fixed 3M™ Thinsulate™ Extra Warmth Insulation (200 g body/150 g sleeve)

WATERPROOFING: Ultra tough polyester and nylon shell with Ven-Tex® 1.0 windproof, waterproof, breathable and DWR coatings



Hi-Vis

FEATURES:

- Critical seams sealed
- Ventec® front & back zippered core vents with snow blocker mesh
- Internal Lycra® hand gaiters
- Zippered hand, internal & cap pockets
- Double stitched seams
- 3M™ Scotchlite™ Reflective materials
- Fleece lined cuffs and insulated collar
- Velcro® adjustable cuffs
- Internal powder skirt
- Dropback design
- Shock cord adjustable hem
- Tether D-Ring



Red

	SML	MED	LRG	XLG	2XL	3XL	4XL	5XL
CHEST SIZE	36-38	39-41	42-44	46-48	50-52	54-56	58-60	60-63
Red	70-8012	70-8014	70-8016	70-8018	70-8019	70-8019T	--	--
Blue	70-8022	70-8024	70-8026	70-8028	70-8029	70-8029T	--	--
Yellow	70-8032	70-8034	70-8036	70-8038	70-8039	70-8039T	--	--
Green	70-8042	70-8044	70-8046	70-8048	70-8049	70-8049T	--	--
Flo Orange	70-8052	70-8054	70-8056	70-8058	70-8059	70-8059T	--	--
Black	70-8072	70-8074	70-8076	70-8078	70-8079	70-8079T	70-8079X	70-8079Z
White	70-8082	70-8084	70-8086	70-8088	70-8089	70-8089T	--	--
Hi-Vis	70-8092	70-8094	70-8096	70-8098	70-8099	70-8099T	--	--

Also Available in Women's Sizes



Blue



Yellow



Green



Flo Orange



Black



White

SCOUT

Retail Camo - \$329.95 - I (SM-2XL) / \$359.95 - I (3XL)
 2-Color - \$239.95 - I (SM-2XL) / \$259.95 - I (3XL)



WATERPROOFING: Ultra tough soft-touch nylon shell with Ven-TEX® 3.0 windproof, waterproof, breathable free hanging membrane system and DWR coating

Realtree Xtra®



FEATURES:

- High performance uninsulated parka
- Comfort-Flow™ polyester mesh lining
- Critical seams sealed
- Backpack friendly Ventec® front & back core vents with snow blocker mesh
- Internal Lycra® hand gaiters
- 3M™ Scotchlite™ Reflective materials
- Zippered internal cap pocket plus dual Spandex™ storage pockets
- Fleece lined cuffs and insulated shock cord adjustable collar with chin saver placket
- Snap secured front placket
- Exposed water resistant zippers
- Velcro® adjustable cuffs
- Internal powder skirt
- Shock cord adjustable hem
- Tether D-Ring



	SML	MED	LRG	XLG	2XL	3XL
CHEST SIZE	36-38	39-41	42-44	46-48	50-52	54-56
Red	70-3912	70-3914	70-3916	70-3918	70-3919	70-3919T
Green	70-3942	70-3944	70-3946	70-3948	70-3949	70-3949T
Gray	70-3962	70-3964	70-3966	70-3968	70-3969	70-3969T
Orange	70-3982	70-3984	70-3986	70-3988	70-3989	70-3989T
Realtree Xtra®	70-3992	70-3994	70-3996	70-3998	70-3999	70-3999T



Red

Green

Gray

Orange



BLADE G2

Retail \$254.95 - I (SM-2XL)
\$279.95 - I (3XL-4XL)

INSULATION: Fixed Castle ColdShield® quilted insulation (200 g body/150 g sleeve)

WATERPROOFING: Ultra tough polyester and nylon shell with Ven-Tex® windproof, waterproof, breathable and DWR coatings



Red

FEATURES:

- Double stitched seams
- Ventec® zippered underarm vents with snow blocker mesh
- 3M™ Scotchlite™ Reflective materials
- Zippered internal and cap pocket
- Bemberg lined pockets
- Fleece lined cuffs and insulated collar
- Velcro® adjustable cuffs
- Dropback design
- Shock cord adjustable hem
- Tether D-Ring

	SML	MED	LRG	XLG	2XL	3XL	4XL
CHEST SIZE	36-38	39-41	42-44	46-48	50-52	54-56	58-60
Red	70-8612	70-8614	70-8616	70-8618	70-8619	70-8619T	--
Blue	70-8622	70-8624	70-8626	70-8628	70-8629	70-8629T	--
Yellow	70-8632	70-8634	70-8636	70-8638	70-8639	70-8639T	--
Green	70-8642	70-8644	70-8646	70-8648	70-8649	70-8649T	--
Black	70-8672	70-8674	70-8676	70-8678	70-8679	70-8679T	70-8679X



Blue



Yellow



Green



Black

PLATFORM G4

Retail \$155.95 - 1 (SM-2XL)
\$169.95 - 1 (3XL-4XL)

INSULATION: Fixed Castle ColdShield® quilted insulation (200 g body/150 g sleeve)

WATERPROOFING: Tough polyester and nylon shell with water resistant PU and DWR coatings

FEATURES:

- Double stitched seams
- 3M™ Scotchlite™ Reflective materials
- Zippered chest internal pocket
- Fleece lined insulated collar
- Velcro® adjustable cuffs
- Dropback design
- Velcro® adjustable hip
- Tether D-Ring



Red

	SML	MED	LRG	XLG	2XL	3XL	4XL
CHEST SIZE	36-38	39-41	42-44	46-48	50-52	54-56	58-60
Red	70-4912	70-4914	70-4916	70-4918	70-4919	70-4919T	--
Blue	70-4922	70-4924	70-4926	70-4928	70-4929	70-4929T	--
Yellow	70-4932	70-4934	70-4936	70-4938	70-4939	70-4939T	--
Green	70-4942	70-4944	70-4946	70-4948	70-4949	70-4949T	--
Black	70-4972	70-4974	70-4976	70-4978	70-4979	70-4979T	70-4979X



Blue

Yellow

Green

Black



CHARGE Retail

\$319.95 - I (SM-2XL)
\$329.95 - I (3XL-4XL)



FEATURES:

- Ven-Tex® 1.0 coated shell construction with high tenacity nylon reinforcements.
- Shell utilizes Ven-Tex® 3.0 that incorporates 100% windproof, waterproof, breathable non-woven full membrane technology
- DWR (Durable Water Repellent) coated shell guards against water and staining
- Removable liner is insulated with Castle Cold Shield® Plus (5 oz. body; 3 oz. sleeves)
- 3M Scotchlite Reflective® piping on front, arms and back
- Ventec® zippered vents in shoulder, arms, and chest

**TAKE ADVANTAGE OF
2014 PRICING
LIMITED QUANTITIES
ARE AVAILABLE**



	SML	MED	LRG	XLG	2XL	3XL
CHEST SIZE	36-38	39-41	42-44	46-48	50-52	54-56
Red	--	C70-0114	C70-0116	C70-0118	C70-0119	--
Blue	C70-0122	C70-0124	C70-0126	C70-0128	C70-0129	--
Yellow	C70-0132	C70-0134	C70-0136	C70-0138	--	--
Green	C70-0142	C70-0144	C70-0146	C70-0148	C70-0149	--
Black	C70-0172	C70-0174	C70-0176	--	C70-0179	C70-0179T
Dk Orange	C70-0182	C70-0184	C70-0186	--	C70-0189	C70-0189T
Mission Gray	C70-0212	C70-0214	C70-0216	--	C70-0219	--



SURGE PANT

Retail \$269.95 - 1



WATERPROOFING: Ultra tough soft-touch nylon uninsulated shell with Ven-Tex® 2.0 windproof, waterproof, breathable laminate & DWR coatings

FEATURES:

- Critical seams sealed
- Comfort-Flow™ polyester mesh lining
- Padded articulated knee panels
- 500D Airdura® reinforced seat, lower legs and hem
- Fleece insert in seat/upper leg area for added comfort
- Padded articulated knee panels
- Precurved seat with action back raised rear panel
- 2-way full length waterproof leg zippers
- 360° adjustable length feature
- Inner snow gaiters attach to boots
- Pocket on thigh and zippered hand pockets
- 3M™ Scotchlite™ Reflective materials
- Velcro® adjustable waist
- Optional zip-in shoulder strap kit available



Retail \$31.95 - 1



Reflex Blue



	SML	MED	LRG	XLG	2XL
WAIST	30-32	32-34	35-37	38-40	41-43
Red	C73-4112	C73-4114	C73-4116	C73-4118	C73-4119
Lime	C73-4142	C73-4144	C73-4146	C73-4148	C73-4149
Reflex Blue	C73-4152	C73-4154	C73-4156	C73-4158	C73-4159
Gray	C73-4162	C73-4164	C73-4166	C73-4168	C73-4169
Black	C73-4172	C73-4174	C73-4176	C73-4178	C73-4179
Orange	C73-4182	C73-4184	C73-4186	C73-4188	C73-4189
MEN'S SHORT (INSEAM)			32	32	32
Black Short	--	--	C73-4176S	C73-4178S	C73-4179S
SHOULDER STRAP KIT		XSM-SML	MED-XLG		2X-3XL
Strap Kit - Black		473-9991	473-9992		473-9993



Red



Lime



Gray



Black



Orange



TUNDRA BIB
 Retail \$415.95 - I (SM-2XL)
 \$449.95 - I (3XL)



Red

INSULATION: High performance non-insulated waterproof/breathable shell with a removable ultra warm 3M™ Thinsulate™ Platinum Insulation (150 g) liner

WATERPROOFING: Outer polyester/nylon shell incorporates a high performance dual stage 10,000mm/8,000g/m² waterproof/breathable system and DWR coating
 [Stage 1] Ven-Tex® 2.0 waterproof/breathable laminated shell materials
 [Stage 2] Fully Seam Sealed Ven-Tex® 3.0 waterproof/breathable laminate membrane liner with air flow ports to allow for functional ventilation

FEATURES:

- Backcountry Series: designed to excel in both off or on trail riding conditions
- Critical seams sealed
- Comfort-Flow™ polyester mesh lining
- 500D Airdura® reinforced seat
- Kevtec® reinforcement in knee, inner lower legs and cuffs
- 2-way full length waterproof leg zippers
- 360° adjustable length feature
- 2 zippered hand pockets
- 2 zippered thigh vents
- Gusseted knees with action flex panels for non-binding fit
- Precurved seat with action back flex construction
- Inner snow gaiters attach to boots
- 3MT™ Scotchlite™ Reflective materials
- Adjustable suspenders



	XSM	SML	MED	LRG	XLG	2XL	3XL
WAIST	28-30	30-32	32-34	35-37	38-40	41-43	48-50
Red	73-1011	73-1012	73-1014	731-1016	73-1018	73-1019	--
Blue	73-1021	73-1022	73-1024	73-1026	73-1028	73-1029	--
Yellow	73-1031	73-1032	73-1034	73-1036	73-1038	73-1039	--
Green	73-1041	73-1042	73-1044	73-1046	73-1048	73-1049	--
Flo Orange	73-1051	73-1052	73-1054	73-1056	73-1058	73-1059	--
Black	73-1071	73-1072	73-1074	73-1076	73-1078	73-1079	73-1079T
Orange	73-1081	73-1082	73-1084	73-1086	73-1088	73-1089	--
Hi-Vis	73-1091	73-1092	73-1094	73-1096	73-1098	73-1099	--
MEN'S SHORT (INSEAM)				32	32	32	
Black Short	--	--	--	73-1076S	73-1078S	73-1079S	--
MEN'S TALL (INSEAM)				37	37		
Black Tall	--	--	--	73-1076T	73-1078T	--	--



Blue

Yellow

Green

Flo Org

Black

Orange

Hi-Vis



FUEL G5

Retail \$239.95 - I (SM-2XL)
\$259.95 - I (3XL)



INSULATION: 3M™ Thinsulate™ Extra Warmth Insulation (150 g)

WATERPROOFING: Ultra tough polyester and nylon shell with Ven-Tex® 1.0 windproof, waterproof, breathable and DWR coatings

FEATURES:

- Critical seams sealed
- Padded articulated knee panels
- 500D Airdura® reinforced seat, lower legs and hem
- Velcro® adjustable waist with flex panel construction
- Pocket on thigh and zippered hand pockets
- Raised padded action back rear panel
- Inner snow gaiters attach to boots
- 360° adjustable length feature
- 3M™ Scotchlite™ Reflective materials
- Ventec® zipper adjustable side ventilation
- Optional zip-in shoulder strap kit available

Retail
\$31.95 - I



	XSM	SML	MED	LRG	XLG	2XL	3XL
WAIST	28-30	30-32	32-34	35-37	38-40	41-43	48-50
Flo Orange	--	73-5102	73-5104	73-5106	73-5108	73-5109	--
Red	--	73-5112	73-5114	73-5116	73-5118	73-5119	--
Blue	--	73-5122	73-5124	73-5126	73-5128	73-5129	--
Yellow	--	73-5132	73-5134	73-5136	73-5138	73-5139	--
Green	--	73-5142	73-5144	73-5146	73-5148	73-5149	--
Hi-Vis	--	73-5152	73-5154	73-5156	73-5158	73-5159	--
Orange	--	73-5162	73-5164	73-5166	73-5168	73-5169	--
Black	73-5171	73-5172	73-5174	73-5176	73-5178	73-5179	73-5179T
MEN'S SHORT (INSEAM)				32	32	32	
Black Short	--	--	--	73-5176S	73-5178S	73-5179S	--
MEN'S TALL (INSEAM)				37	37		
Black Tall	--	--	--	73-5176T	73-5178T	--	--
SHOULDER STRAP KIT	XSM-SML		MED-XLG			2X-3XL	
Strap Kit - Black	473-9991		473-9992			473-9993	



New! Flo Orange

Red

Blue

Yellow

Green

Orange

Black



MEN'S

FUEL REALTREE® G5

Retail \$294.95 - 1

INSULATION: 3M™ Thinsulate™ Extra Warmth Insulation (150 g)

WATERPROOFING: Ultra tough polyester and nylon shell with Ven-Tex® 1.0 windproof, waterproof, breathable and DWR coatings

FEATURES:

- Critical seams sealed
- Padded articulated knee panels
- 500D Airdura® reinforced seat, lower legs and hem
- Velcro® adjustable waist with flex panel construction
- Pocket on thigh and zippered hand pockets
- Raised padded action back rear panel
- Inner snow gaiters attach to boots
- 360° adjustable length feature
- 3M™ Scotchlite™ Reflective materials
- Ventec® zipper adjustable side ventilation
- Optional zip-in shoulder strap kit available



Retail \$31.95 - 1

	XSM	SML	MED	LRG	XLG	2XL
WAIST	28-30	30-32	32-34	35-37	38-40	41-43
Realtree AP® Snow	73-5091	73-5092	73-5094	73-5096	73-5098	73-5099
Realtree Xtra®	73-5191	73-5192	73-5194	73-5196	73-5198	73-5199
SHOULDER STRAP KIT	XSM-SML		MED-XLG		2XL	
Strap Kit - Black	473-9991		473-9992		473-9993	



Realtree Xtra®



Realtree AP® Snow/Orange



Realtree AP® Snow



REALTREE®



Realtree Xtra®



FUEL SE G5

Retail \$239.95 - I (SM-2XL)
\$259.95 - I (3XL)



INSULATION: 3M™ Thinsulate™ Extra Warmth Insulation (150 g)

WATERPROOFING: Ultra tough polyester and nylon shell with Ven-Tex® 1.0 windproof, waterproof, breathable and DWR coatings

FEATURES:

- Critical seams sealed
- Padded articulated knee panels
- 500D Airdura® reinforced seat, lower legs and hem
- Velcro® adjustable waist with flex panel construction
- Pocket on thigh and zippered hand pockets
- Raised padded action back rear panel
- Inner snow gaiters attach to boots
- 360° adjustable length feature
- 3M™ Scotchlite™ Reflective materials
- Ventec® zipper adjustable side ventilation
- Optional zip-in shoulder strap kit available

Retail
\$31.95 - I



Optional Strap Kit



Red/White

	XSM	SML	MED	LRG	XLG	2XL	3XL
WAIST	28-30	30-32	32-34	35-37	38-40	41-43	48-50
Red/White	73-5011	73-5012	73-5014	73-5016	73-5018	73-5019	--
Black/White	73-5071	73-5072	73-5074	73-5076	73-5078	73-5079	73-5079T
Reflex/Blue	73-5221	73-5222	73-5224	73-5226	73-5228	73-5229	--
Green/Flo 0	73-5241	73-5242	73-5244	73-5246	73-5248	73-5249	--
Flo Org/Hi-Vis	73-5251	73-5252	73-5254	73-5256	73-5258	73-5259	--
Orange/Gray	73-5281	73-5282	73-5284	73-5286	73-5288	73-5289	--
SHOULDER STRAP KIT	XSM-SML		MED-XLG		2X-3XL		
Strap Kit - Black	473-9991		473-9992		473-9993		

*New Colors Available



Black/White

New! Reflex/Blue

New! Green/Flo Org

New! Flo Org/Hi-Vis

New! Orange/Gray



CR2 BIB

Retail

\$215.95 -I (SM-2XL)

\$236.95 -I (3XL)

INSULATION: 3M™ Thinsulate™ Extra Warmth Insulation (150 g)

WATERPROOFING: Durable high tenacity nylon shell with Ven-Tex® 1.0Tex® windproof, waterproof, breathable and DWR coatings

FEATURES:

- Critical seams sealed
- 500D Airdura® reinforced seat, knees and inner lower legs
- 3M™ Scotchlite™ Reflective materials
- Pre-curved seat and knee panels
- 360° adjustable length feature
- Zippered hand pockets

Short Size Inseam - 30" / Standard Size Inseam 33" / Tall Size Inseam 37"

	SML	MED	LRG	XLG	2XL	3XL	4XL	5XL	6XL
	30-32	32-34	35-37	38-40	41-43	48-50	52-54	56-58	60-62
473-2212	473-2214	473-2216	473-2218	473-2219	473-2219T	473-2219X	473-2219Y	473-2219Z	
SHORT SIZES			LRG	XLG	2XL	3XL	4XL	5XL	6XL
--	--	473-2216S	473-2218S	473-2219S	473-2219TS	473-2219XS	473-2219YS	473-2219ZS	
TALL SIZES			LRG	XLG					
--	--	473-2216T	473-2218T	--	--	--	--	--	--

Also Available in Women's & Youth Sizes



PLATFORM BIB

Retail

\$153.95 -I (SM-2XL)

\$169.95 -I (3XL)

INSULATION: Castle Coldshield® quilted insulation (150 g)

WATERPROOFING: 600D high tenacity nylon shell with water resistant PU and DWR coatings

FEATURES:

- Critical seams sealed
- Zippered hand pockets
- Pre-curved seat and knee panels
- 360° adjustable length feature

	SML	MED	LRG	XLG	2XL	3XL
WAIST	30-32	32-34	35-37	38-40	41-43	48-50
Men's	473-2412	473-2414	473-2416	473-2418	473-2419	473-2419T

Also Available in Women's Sizes

BLISS G2

Retail \$359.95 - I (SM-2XL)
\$399.95 - I (1W-4W)



INSULATION: Fixed 3M™ Thinsulate™ Extra Warmth Insulation (200 g body/150 g sleeve)

WATERPROOFING: Soft-touch polyester shell with Ven-Tex® 2.0 windproof, waterproof, breathable laminate & DWR coating



Magenta Crush



FEATURES:

- Critical seams sealed
- Ventec® zippered underarm ventilation with snow blocker mesh
- 3M™ Scotchlite™ Reflective materials
- Multiple exterior & interior pockets
- Internal Lycra® hand gaiters
- Micro fleece lined insulated collar and cuffs
- Magnetic front placket
- Velcro® adjustable cuffs and hip
- Shock cord adjustable hem
- Detachable 3-point adjustable hood
- Tether D-Ring



Violet Crush

	SML	MED	LRG	XLG	2XL
JACKET SIZE	4-6	8-10	12-14	16-18	20-22
Violet Crush	72-3032	72-3034	72-3036	72-3038	72-3039
Magenta Crush	72-3092	72-3094	72-3096	72-3098	72-3099
Hot Pink Shadow	72-3122	72-3124	72-3126	72-3128	72-3129
Hi-Vis Shadow	72-3132	72-3134	72-3136	72-3138	72-3139
White Shadow	72-3192	72-3194	72-3196	72-3198	72-3199

PLUS SIZES	1W	2W	3W	4W
JACKET SIZE (See Page 2 for Women's Plus size information)				
Hot Pink Shadow	72-3128W	72-3129W	72-3129Y	72-3129Z

*New Colors Available

AVAILABLE IN Plus Sizes

New! Hot Pink Shadow

New! Hi-Vis Shadow

New! White Shadow





CHARGE G2C

Retail \$399.95 - I (SM-2XL)
\$439.95 - I (1W-4W)



INSULATION: 3M™ Thinsulate™ Platinum Insulation (160 g body/100 g sleeve) in shell and a removable 3M™ Thinsulate™ Extra Warmth Insulation 60 g liner (overall combined insulation 220 g body/160 g sleeve)

WATERPROOFING: Durable and soft Dobby nylon shell with Ven-Tex® 2.0 windproof, waterproof, breathable laminate and DWR coating

FEATURES:

- Critical seams sealed
- Ventec® 2-way core ventilation with snow blocker mesh
- Comfort-Flow™ polyester mesh lining
- Integrated goggle wipe
- Internal Lycra® hand gaiters
- Zippered internal cap plus dual Spandex™ storage pockets
- Fleece lined cuffs and insulated collar with chin saver placket
- Double stitched seams
- Magnetic front placket
- Velcro® adjustable cuffs
- Shock cord adjustable collar & hem
- Zipper adjustable hip
- 3M™ Scotchlite™ Reflective materials
- Detachable 3-point adjustable hood
- Tether D-Ring



White



Detachable Hood



	XSM	SML	MED	LRG	XLG	2XL
JACKET SIZE	0-2	4-6	8-10	12-14	16-18	20-22
Hot Pink	72-2921	72-2922	72-2924	72-2926	72-2928	72-2929
Hi-Vis	72-2941	72-2942	72-2944	72-2946	72-2948	72-2949
Yellow	72-2931	72-2932	72-2934	72-2936	72-2938	72-2939
Black	72-2971	72-2972	72-2974	72-2976	72-2978	72-2979
White	72-2991	72-2992	72-2994	72-2996	72-2998	72-2999
PLUS SIZES		1W	2W	3W	4W	
JACKET SIZE	(See Page 2 for Women's Plus size information)					
Black		72-2978W	72-2979W	72-2979Y	72-2979Z	



Hot Pink



Hi-Vis



Black



LAUNCH KRYPTEK™ G3

Retail \$429.95 - 1



INSULATION: 3M™ Thinsulate™ Extra Warmth Insulation (150 g body/100 g sleeve) in shell and a removable 3M™ Thinsulate™ Extra Warmth Insulation 60 g liner (overall combined insulation 210 g body/160 g sleeve)

WATERPROOFING: Durable and soft Dobby nylon shell with Ven-TEX® 1.0 windproof, waterproof, breathable and DWR coatings

FEATURES:

- Critical seams sealed
- Ventec® 2-way zippered core vents with snow blocker mesh
- Comfort-Flow™ polyester mesh lining
- Internal Lycra® hand gaiters
- 3M™ Scotchlite™ Reflective materials
- Fleece lined cuffs & insulated collar
- Zippered internal cap plus dual Spandex™ storage pockets
- Velcro® adjustable cuffs
- Internal powder skirt
- Shock cord adjustable hem
- Tether D-Ring

	XSM	SML	MED	LRG	XLG	2XL
JACKET SIZE	0-2	4-6	8-10	12-14	16-18	20-22
Kryptek™ Yeti™ - Reflex Blue	71-0311	71-0312	71-0314	71-0316	71-0318	71-0319
Kryptek™ Typhon™ - Hot Pnk	71-0321	71-0322	71-0324	71-0326	71-0328	71-0329



Kryptek™ Yeti™

Kryptek™ Typhon™

Kryptek™ Yeti™ - Reflex Blue

Kryptek™ Typhon™ - Hot Pink



LAUNCH REALTREE® G3

Retail \$369.95 - 1



INSULATION: 3M™ Thinsulate™ Extra Warmth Insulation (150 g body/100 g sleeve) in shell and a removable 3M™ Thinsulate™ Extra Warmth Insulation 60 g liner (overall combined insulation 210 g body/160 g sleeve)

WATERPROOFING: Durable and soft Dobby nylon shell with Ven-Tex® 1.0 windproof, waterproof, breathable and DWR coatings

FEATURES:

- Critical seams sealed
- Ventec® 2-way zippered core vents with snow blocker mesh
- Comfort-Flow™ polyester mesh lining
- Internal Lycra® hand gaiters
- 3M™ Scotchlite™ Reflective materials
- Fleece lined cuffs & insulated collar
- Zippered internal cap plus dual Spandex™ storage pockets
- Velcro® adjustable cuffs
- Internal powder skirt
- Shock cord adjustable hem
- Tether D-Ring

	XSM	SML	MED	LRG	XLG	2XL
JACKET SIZE	0-2	4-6	8-10	12-14	16-18	20-22
Realtree AP® Snow	71-0291	71-0292	71-0294	71-0296	71-0298	71-0299

GÖSTEX

Women's

WOMEN'S



Realtree AP® Snow



RealtreeAP® Snow/Hot Pink

Matching Pants See Page 38





LAUNCH G3

Retail \$329.95 - 1



INSULATION: 3M™ Thinsulate™ Extra Warmth Insulation (150 g body/100 g sleeve) in shell and a removable 3M™ Thinsulate™ Extra Warmth Insulation 60 g liner (overall combined insulation 210 g body/160 g sleeve)

WATERPROOFING: Durable and soft Dobby nylon shell with Ven-Tex® 1.0 windproof, waterproof, breathable and DWR coatings



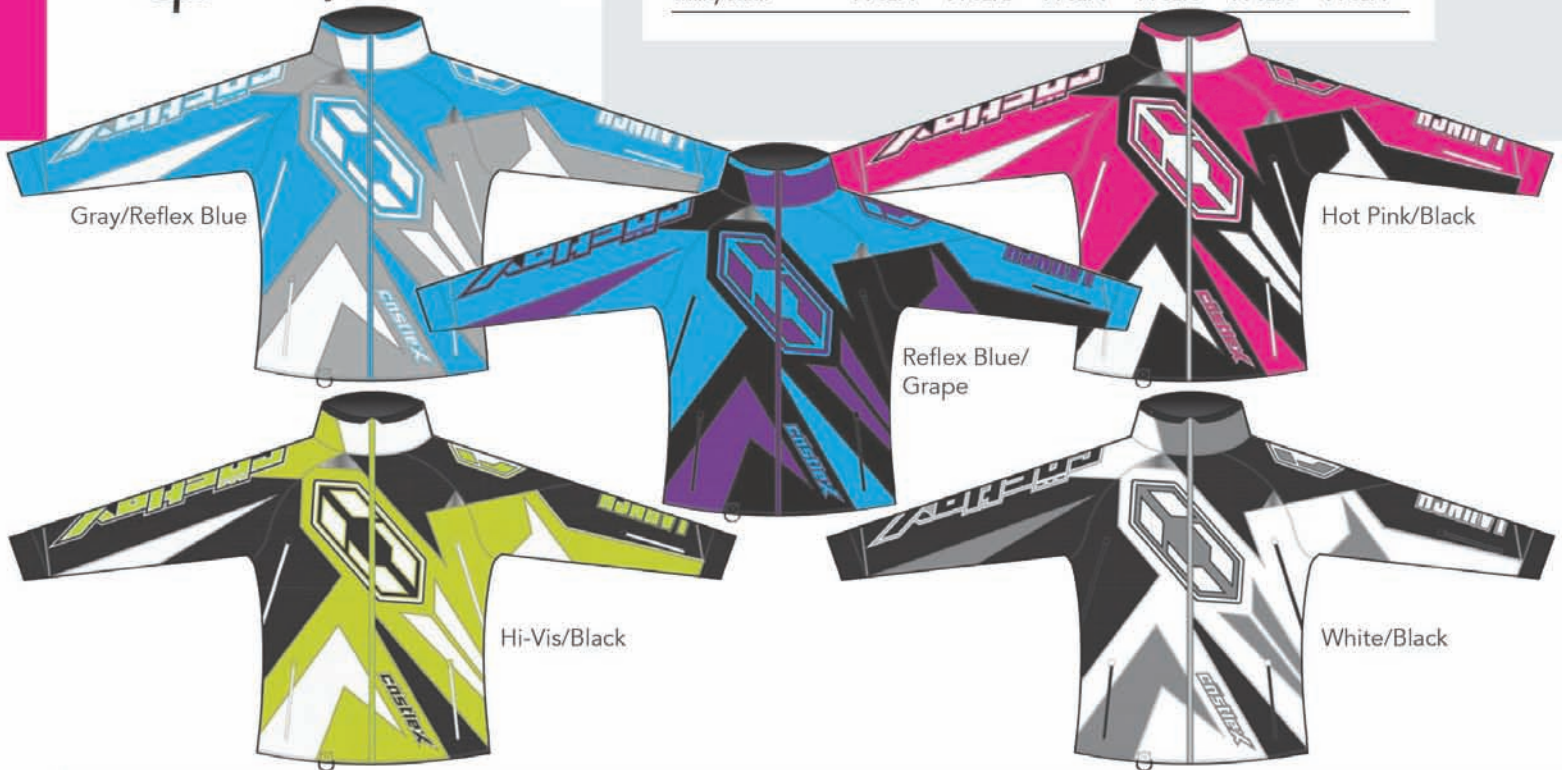
Hot Pink/Hi-Vis

Matching Pants
See Page 37

FEATURES:

- Critical seams sealed
- Ventec® 2-way zippered core vents with snow blocker mesh
- Comfort-Flow™ polyester mesh lining
- Internal Lycra® hand gaiters
- 3M™ Scotchlite™ Reflective materials
- Fleece lined cuffs & insulated collar
- Zippered internal cap plus dual Spandex™ storage pockets
- Velcro® adjustable cuffs
- Internal powder skirt
- Shock cord adjustable hem
- Tether D-Ring

	XSM	SML	MED	LRG	XLG	2XL
JACKET SIZE	0-2	4-6	8-10	12-14	16-18	20-22
Gray/Reflex Blue	71-0201	71-0202	71-0204	71-0206	71-0208	71-0209
Reflex Blue/Grape	71-0211	71-0212	71-0214	71-0216	71-0218	71-0219
Hot Pink/Black	71-0221	71-0222	71-0224	71-0226	71-0228	71-0229
Hot Pink/Hi-Vis	71-0231	71-0232	71-0234	71-0236	71-0238	71-0239
Hi-Vis/Black	71-0241	71-0242	71-0244	71-0246	71-0248	71-0249
White/Black	71-0271	71-0272	71-0274	71-0276	71-0278	71-0279



Gray/Reflex Blue

Hot Pink/Black

Reflex Blue/
Grape

Hi-Vis/Black

White/Black



BOLT REALTREE® G3

Retail \$339.95 - 1



INSULATION: Fixed 3M™ Thinsulate™ Extra Warmth Insulation (200 g body/150 g sleeve)

WATERPROOFING: Ultra tough Dobby nylon shell with Ven-Tex® 1.0 windproof, waterproof, breathable & DWR coatings

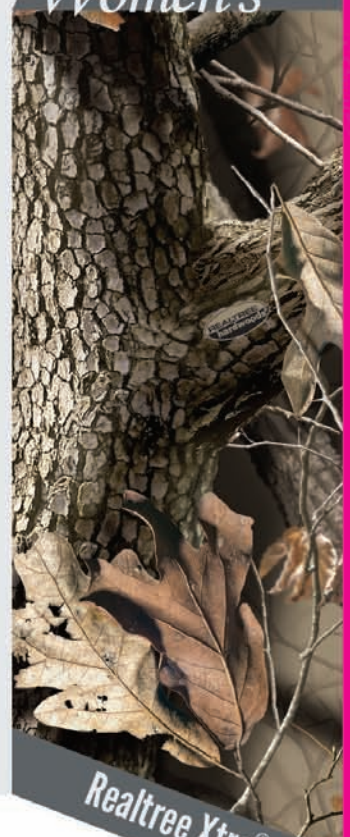
FEATURES:

- Critical seams sealed
- Ventec® zippered front & back core vents with snow blocker mesh
- Internal Lycra® hand gaiters
- Zippered hand, internal and cap pockets
- Bemberg lined hand pockets
- Double stitched seams
- 3M™ Scotchlite™ Reflective materials
- Fleece lined cuffs & insulated collar
- Velcro® adjustable hip and cuffs
- Shock cord adjustable hem
- Tether D-Ring

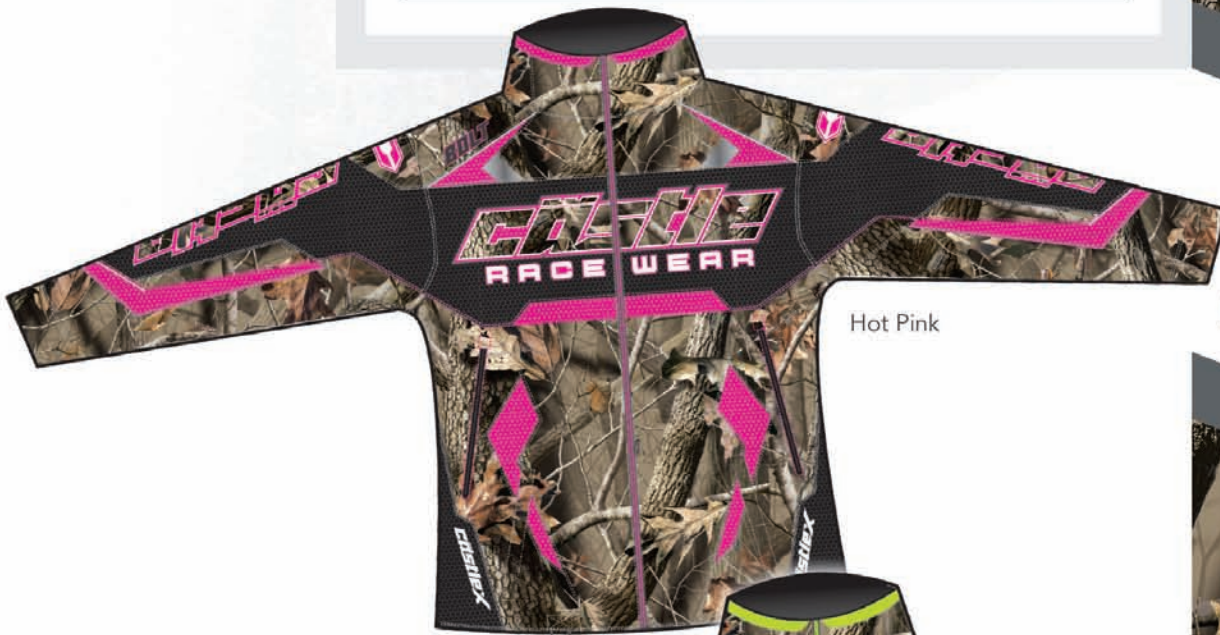
	XSM	SML	MED	LRG	XLG	2XL
JACKET SIZE	0-2	4-6	8-10	12-14	16-18	20-22
Hot Pink	71-0681	71-0682	71-0684	71-0686	71-0688	71-0689
Hi-Vis	71-0691	71-0692	71-0694	71-0696	71-0698	71-0699

COSTIEX Women's

WOMEN'S



Realtree Xtra®



Hot Pink



Hi-Vis





BOLT REALTREE® G3

Retail \$329.95 - 1



INSULATION: Fixed 3M™ Thinsulate™ Extra Warmth Insulation (200 g body/150 g sleeve)

WATERPROOFING: Ultra tough Dobby nylon shell with Ven-Tex® 1.0 windproof, waterproof, breathable & DWR coatings



FEATURES:

- Critical seams sealed
- Ventec® zippered front & back core vents with snow blocker mesh
- Internal Lycra® hand gaiters
- Zippered hand, internal and cap pockets
- Bemberg lined hand pockets
- Double stitched seams
- 3M™ Scotchlite™ Reflective materials
- Fleece lined cuffs & insulated collar
- Velcro® adjustable hip and cuffs
- Shock cord adjustable hem
- Tether D-Ring

Black/Hi-Vis

	XSM	SML	MED	LRG	XLG	2XL
JACKET SIZE	0-2	4-6	8-10	12-14	16-18	20-22
Black/Hot Pink	71-0721	71-0722	71-0724	71-0726	71-0728	71-0729
Black/Hi-Vis	71-0731	71-0732	71-0734	71-0736	71-0738	71-0739
Black/Reflex Blue	71-0751	71-0752	71-0754	71-0756	71-0758	71-0759

Black/Hot Pink



Black/Reflex Blue



Realtree Xtra®



BOLT G3

Retail \$299.95 - I (SM-2XL)
\$329.95 - I (1W-4W)



INSULATION: Fixed 3M™ Thinsulate™ Extra Warmth Insulation (200 g body/150 g sleeve)

WATERPROOFING: Ultra tough Dobby nylon shell with Ven-Tex® 1.0 windproof, waterproof, breathable & DWR coatings

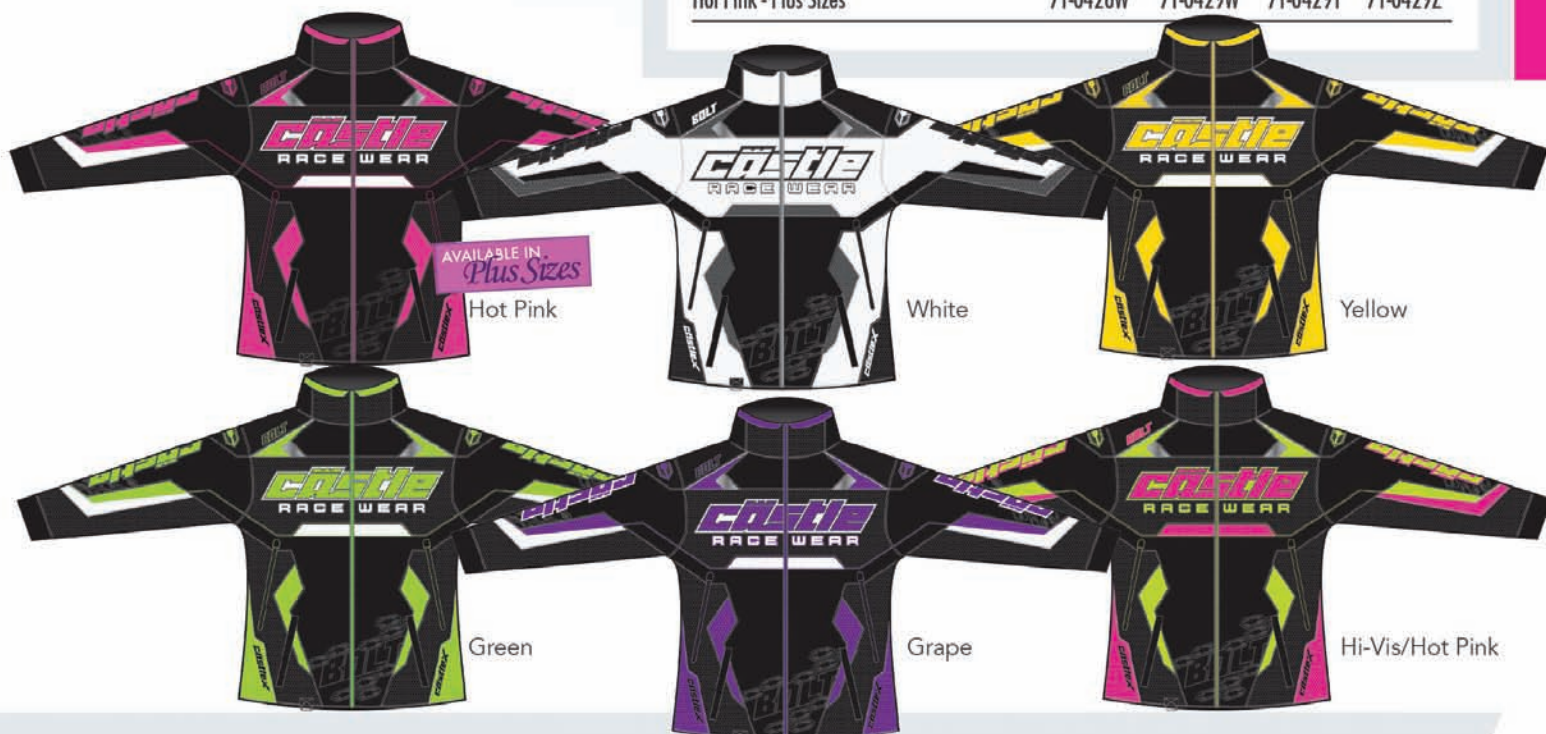


Reflex Blue

FEATURES:

- Critical seams sealed
- Ventec® zippered front & back core vents with snow blocker mesh
- Internal Lycra® hand gaiters
- Zippered hand, internal and cap pockets
- Bemberg lined hand pockets
- Double stitched seams
- 3M™ Scotchlite™ Reflective materials
- Fleece lined cuffs & insulated collar
- Velcro® adjustable hip and cuffs
- Shock cord adjustable hem
- Tether D-Ring

	XSM	SML	MED	LRG	XLG	2XL	
JACKET SIZE	0-2	4-6	8-10	12-14	16-18	20-22	
Hot Pink	71-0421	71-0422	71-0424	71-0426	71-0428	71-0429	
Reflex Blue	71-0451	71-0452	71-0454	71-0456	71-0458	71-0459	
White	71-0491	71-0492	71-0494	71-0496	71-0498	71-0499	
Yellow	71-0531	71-0532	71-0534	71-0536	71-0538	71-0539	
Green	71-0541	71-0542	71-0544	71-0546	71-0548	71-0549	
Grape	71-0581	71-0582	71-0584	71-0586	71-0588	71-0589	
Hi-Vis/Hot Pink	71-0591	71-0592	71-0594	71-0596	71-0598	71-0599	
PLUS SIZES				1W	2W	3W	4W
JACKET SIZE	(See Page 2 for Women's Plus size information)						
Hot Pink - Plus Sizes				71-0428W	71-0429W	71-0429Y	71-0429Z



AVAILABLE IN Plus Sizes
Hot Pink

White

Yellow

Green

Grape

Hi-Vis/Hot Pink

CHARM G2

Retail \$185.95 - 1

INSULATION: Fixed Castle ColdShield® quilted insulation (200 g body/150 g sleeve)

WATERPROOFING: Ultra tough Dobby nylon shell with water resistant PU and DWR coatings

FEATURES:

- Ventec® zippered underarm ventilation
- Zippered interior chest pocket
- Bemberg lined hand pockets
- 3M™ Scotchlite™ Reflective materials
- Double stitched seams
- Fleece lined cuffs and insulated collar
- Velcro® adjustable cuffs and hip
- Shock cord adjustable waist
- Tether D-Ring



Grape

	XSM	SML	MED	LRG	XLG	2XL
JACKET SIZE	0-2	4-6	8-10	12-14	16-18	20-22
Reflex Blue	72-1951	72-1952	72-1954	72-1956	72-1958	72-1959
Black	72-1971	72-1972	72-1974	72-1976	72-1978	72-1979
Magenta	72-1981	72-1982	72-1984	72-1986	72-1988	72-1989
Grape	72-1991	72-1992	72-1994	72-1996	72-1998	72-1999



Reflex Blue



Black



Magenta



Costiex Women's

WOMEN'S

FUEL SE G5

Retail \$239.95 - I



Black/White

INSULATION: 3M™ Thinsulate™ Extra Warmth Insulation (150 g)
WATERPROOFING: Ultra tough Dobby nylon shell with Ven-Tex® 1.0 windproof, waterproof, breathable and DWR coatings

FEATURES:

- Critical seams sealed
- Padded articulated knee panels
- 500D Airdura® reinforced seat, lower legs and hem
- Velcro® adjustable waist with flex panel
- Pocket on thigh and zippered hand pockets
- Raised padded action back rear panel
- Inner snow gaiters attach to boots
- 360° adjustable length feature
- 3M™ Scotchlite™ Reflective materials
- Ventec® zipper adjustable side ventilation
- Optional zip-in shoulder strap kit available

Retail
\$31.95 - I



Optional Strap Kit

	XSM	SML	MED	LRG	XLG	2XL
PANT SIZE	0-2	4-6	8-10	12-14	16-18	20-22
Black/White	73-5371	73-5372	73-5374	73-5376	73-5378	73-5379
Gray/Reflex Blue	73-6701	73-6702	73-6704	73-6706	73-6708	73-6709
Reflex Blue/Grape	73-6711	73-6712	73-6714	73-6716	73-6718	73-6719
Hot Pink/Hi-Vis	73-6731	73-6732	73-6734	73-6736	73-6738	73-6739
SHOULDER STRAP KIT	XSM-SML		MED-XLG		2XL	
Strap Kit - Black	473-9991		473-9992		473-9993	

**New Colors Available*



New! Gray/
Reflex Blue



New! Reflex
Blue/Grape



New! Hot
Pink/Hi-Vis



FUEL REALTREE® G5

Retail \$294.95 - 1



INSULATION: 3M™ Thinsulate™ Extra Warmth Insulation (150 g)
WATERPROOFING: Ultra tough Dobby nylon shell with Ven-Tex® 1.0 windproof, waterproof, breathable and DWR coatings

FEATURES:

- Critical seams sealed
- Padded articulated knee panels
- 500D Airdura® reinforced seat, lower legs & hem
- Velcro® adjustable waist with flex panel
- Pocket on thigh and zippered hand pockets
- Raised padded action back rear panel
- Inner snow gaiters attach to boots
- 360° adjustable length feature
- 3M™ Scotchlite™ Reflective materials
- Ventec® zipper adjustable side ventilation
- Optional zip-in shoulder strap kit available

Retail
\$31.95 - 1



	SML	MED	LRG	XLG	2XL
PANT SIZE	4-6	8-10	12-14	16-18	20-22
Realtree AP® Snow	73-5682	73-5684	73-5686	73-5688	73-5689
Realtree Xtra®	73-5692	73-5694	73-5696	73-5698	73-5699
SHOULDER STRAP KIT	XSM-SML		MED-XLG		2XL
Strap Kit - Black	473-9991		473-9992		473-9993

Realtree AP® Snow



Realtree Xtra®



Realtree AP® Snow



Realtree Xtra®



FUEL G5B

Retail \$239.95 - I



INSULATION: 3M™ Thinsulate™ Extra Warmth Insulation (150 g)
WATERPROOFING: Ultra tough Dobby nylon shell with Ven-Tex® 1.0 windproof, waterproof, breathable and DWR coatings

FEATURES:

- Critical seams sealed
- Padded articulated knee panels
- 500D Airdura® reinforced seat, lower legs and hem
- Velcro® adjustable waist with flex panel construction
- Pocket on thigh and zippered hand pockets
- Raised padded action back rear panel
- Inner snow gaiters attach to boots
- 360° adjustable length feature
- 3M™ Scotchlite™ Reflective materials
- Ventec® zipper adjustable side ventilation
- Optional zip-in shoulder strap kit available

Retail \$31.95 - I



	XSM	SML	MED	LRG	XLG	2XL
PANT SIZE	0-2	4-6	8-10	12-14	16-18	20-22
Yellow	--	73-5532	73-5534	73-5536	73-5538	73-5539
Hi-Vis	--	73-5542	73-5544	73-5546	73-5548	73-5549
Grape	--	73-5632	73-5634	73-5636	73-5638	73-5639
Hot Pink	--	73-5622	73-5624	73-5626	73-5628	73-5629
Reflex Blue	--	73-5652	73-5654	73-5656	73-5658	73-5659
Black	73-5671	73-5672	73-5674	73-5676	73-5678	73-5679

WOMEN'S PETITE (28" INSEAM)

Black Petite	--	--	73-5674S	73-5676S	73-5678S	73-5679S
--------------	----	----	----------	----------	----------	----------

SHOULDER STRAP KIT

	XSM-SML	MED-XLG	2XL
Strap Kit - Black	473-9991	473-9992	473-9993

**New Color Available*



Yellow Grape *New!* Hot Pink Reflex Blue Black



Tailored
Women's Fit

Black



Light Gray



White

BLISS PANT

Retail \$225.95 - 1



INSULATION: 3M™ Thinsulate™ Extra Warmth Insulation (120 g)

WATERPROOFING: Comfortable and durable nylon shell with Ven-Tex® 1.0 windproof, waterproof, breathable and DWR coatings

FEATURES:

- Critical seams sealed
- Mid-rise, semi-relaxed stylish fit
- Velcro® adjustable waist
- Two zippered hand pockets
- Integrated belt loops
- Inner snow gaiters with silicone treated elastic attach to boots

	XSM	SML	MED	LRG	XLG	2XL
PANT SIZE	0-2	4-6	8-10	12-14	16-18	20-22
Light Gray	--	73-5762	73-5764	73-5766	73-5768	73-5769
Black	73-5771	73-5772	73-5774	73-5776	73-5778	73-5779
White	--	73-5792	73-5794	73-5796	73-5798	73-5799

WOMEN'S PETITE (28" INSEAM)

Black Petite	--	--	73-5774S	73-5776S	73-5778S	73-5779S
--------------	----	----	----------	----------	----------	----------

Also Available in Youth Sizes



CR2 BIB
Retail \$215.95 - I

INSULATION: 3M™ Thinsulate™ Extra Warmth Insulation (150 g)

WATERPROOFING: Durable high tenacity nylon shell with Ven-Tex® 1.0 windproof, waterproof, breathable and DWR coatings

FEATURES:

- Critical seams sealed
- 500D Airdura® reinforced seat, knees and inner lower legs
- 3M™ Scotchlite™ Reflective materials
- Pre-curved seat and knee panels
- 360° adjustable length feature
- Zippered hand pockets

	XSM	SML	MED	LRG	XLG	2XL
PANT SIZE	0-2	4-6	8-10	12-14	16-18	20-22
Women's	473-2251	473-2252	473-2254	473-2256	473-2258	473-2259
WOMEN'S PETITE (28" INSEAM)						
Women's Petite	--	--	473-2254S	473-2256S	473-2258S	473-2259S

Also Available in Youth Sizes



PLATFORM BIB
Retail \$153.95 - I

INSULATION: Castle Coldshield® quilted insulation (150 g)

WATERPROOFING: 600D high tenacity nylon shell with water resistant PU and DWR coatings

FEATURES:

- Critical seams sealed
- Zippered hand pockets
- Pre-curved seat and knee panels
- 360° adjustable length feature

	XSM	SML	MED	LRG	XLG	2XL
PANT SIZE	0-2	4-6	8-10	12-14	16-18	20-22
Women's	473-2451	473-2452	473-2454	473-2456	473-2458	473-2459



TUNDRA BIB

Retail \$415.95 - 1



INSULATION: High performance non-insulated waterproof/breathable shell with a removable ultra warm 3M™ Thinsulate™ Platinum Insulation (150 g) liner

WATERPROOFING: Outer polyester/nylon shell incorporates a high performance dual stage 10,000mm/8,000g/m² waterproof/breathable system & DVR coating
 [Stage 1] Ven-Tex® 2.0 waterproof/breathable laminated shell materials
 [Stage 2] Fully Seam Sealed Ven-Tex® 3.0 waterproof/breathable laminate membrane liner with air flow ports to allow for functional ventilation

FEATURES:

- Backcountry Series: designed to excel in both off or on trail riding conditions
- Critical seams sealed
- Comfort-Flow™ polyester mesh lining
- 500D Airdura® reinforced seat
- Kevtec® reinforcement in knee, inner lower legs and cuffs
- 2-way full length waterproof leg zippers
- 360° adjustable length feature at bottom of cuff
- 2 zippered hand pockets
- 2 zippered thigh vents
- Gusseted knees with action flex panels for non-binding fit
- Precurved seat with action back flex construction
- Inner snow gaiters attach to boots
- 3M™ Scotchlite™ Reflective materials
- Adjustable suspenders



White

	SML	MED	LRG	XLG	2XL
JACKET SIZE	4-6	8-10	12-14	16-18	20-22
Hot Pink	73-1122	73-1124	73-1126	73-1128	73-1129
Hi-Vis	73-1132	73-1134	73-1136	73-1138	73-1139
Reflex Blue	73-1152	73-1154	73-1156	73-1158	73-1159
Black	73-1172	73-1174	73-1176	73-1178	73-1179
White	73-1192	73-1194	73-1196	73-1198	73-1199



Hot Pink



Hi-Vis



Reflex Blue



Black



YOUTH [BOYS]

LAUNCH SE *BOY'S G3*

Retail \$164.95 - H (SM-LG)
\$174.95 - H (XL)

INSULATION: Fixed Castle ColdShield® quilted insulation (200 g body/150 g sleeve)

WATERPROOFING: Ultra tough nylon shell with water resistant PU and DWR coatings



Reflex Blue/White

FEATURES:

- Internal Lycra® hand gaiters
- Zippered hand pockets
- 3M™ Scotchlite™ Reflective materials
- Double stitched seams
- Fleece lined cuffs and insulated collar
- Velcro® adjustable cuffs
- Internal powder skirt
- Dropback design
- Shock cord adjustable hem

Matching Pants
See Page 53

	XSM	SML	MED	LRG	XLG
YOUTH CLOTHING SIZE	4-6	7-8	10-12	14-16	18-20
Red/White	72-4311	72-4312	72-4314	72-4316	72-4318
Reflex Blue/White	72-4321	72-4322	72-4324	72-4326	72-4328
Green/Flo Orange	72-4341	72-4342	72-4344	72-4346	72-4348
Flo Orange/Hi-Vis	72-4351	72-4352	72-4354	72-4356	72-4358
Black/White	72-4371	72-4372	72-4374	72-4376	72-4378
Orange/Gray	72-4381	72-4382	72-4384	72-4386	72-4388



Red/White



Green/Flo Orange



Flo Orange/Hi-Vis



Black/White



Orange/Gray



LAUNCH REALTREE® BOY'S G3

Retail \$194.95 - H (SM-LG)
\$199.95 - H (XL)

INSULATION: Fixed Castle ColdShield® quilted insulation (200 g body/150 g sleeve)

WATERPROOFING: Ultra tough nylon shell with water resistant PU and DWR coatings

FEATURES:

- Internal Lycra® hand gaiters
- Zippered hand pockets
- 3M™ Scotchlite™ Reflective materials
- Double stitched seams
- Fleece lined cuffs and insulated collar
- Velcro® adjustable cuffs
- Internal powder skirt
- Dropback design
- Shock cord adjustable hem

	XSM	SML	MED	LRG	XLG
YOUTH CLOTHING SIZE	4-6	7-8	10-12	14-16	18-20
Realtree AP® Snow	72-4391	72-4392	72-4394	72-4396	72-4398

Realtree AP® Snow





YOUTH [BOY'S]

BOLT BOY'S G3

Retail \$183.95 - H (SM-LG)
\$189.95 - H (XL)

INSULATION: Fixed Castle ColdShield® quilted insulation
(200 g body/150 g sleeve)

WATERPROOFING: Ultra tough nylon shell with water resistant PU and DWR coatings



Flo Orange

FEATURES:

- Internal Lycra® hand gaiters
- Zippered hand pockets
- 3M™ Scotchlite™ Reflective materials
- Double stitched seams
- Fleece lined cuffs and insulated collar
- Velcro® adjustable cuffs
- Internal powder skirt
- Dropback design
- Shock cord adjustable hem

	XSM	SML	MED	LRG	XLG
YOUTH CLOTHING SIZE	4-6	7-8	10-12	14-16	18-20
Red	72-4411	72-4412	72-4414	72-4416	72-4418
Blue	72-4421	72-4422	72-4424	72-4426	72-4428
Yellow	72-4431	72-4432	72-4434	72-4436	72-4438
Green	72-4441	72-4442	72-4444	72-4446	72-4448
Flo Orange	72-4451	72-4452	72-4454	72-4456	72-4458
Hi-Vis	72-4461	72-4462	72-4464	72-4466	72-4468



Red



Blue



Yellow



Green



Hi-Vis



BOLT REALTREE® BOY'S G3

Retail \$215.95 - H (SM-LG)
\$222.95 - H (XL)

INSULATION: Fixed Castle ColdShield® quilted insulation (200 g body/150 g sleeve)

WATERPROOFING: Ultra tough nylon shell with water resistant PU and DWR coatings

- FEATURES:
- Internal Lycra® hand gaiters
 - Zippered hand pockets
 - 3M™ Scotchlite™ Reflective materials
 - Double stitched seams
 - Fleece lined cuffs and insulated collar
 - Velcro® adjustable cuffs
 - Internal powder skirt
 - Dropback design
 - Shock cord adjustable hem

	XSM	SML	MED	LRG	XLG
YOUTH CLOTHING SIZE	4-6	7-8	10-12	14-16	18-20
Realtree Xtra® Hi-Vis	72-4511	72-4512	72-4514	72-4516	72-4518
Realtree Xtra® Orange	72-4521	72-4522	72-4524	72-4526	72-4528



Hi-Vis



Orange





LAUNCH SE *GIRL'S G3*

Retail \$164.95 - H (SM-LG)

\$174.95 - H (XL)

INSULATION: Fixed Castle ColdShield® quilted insulation
(200 g body/150 g sleeve)

WATERPROOFING: Ultra tough nylon shell with water resistant PU and DWR coatings



Hot Pink/Hi-Vis

FEATURES:

- Internal Lycra® hand gaiters
- Zippered hand pockets
- 3M™ Scotchlite™ Reflective materials
- Double stitched seams
- Fleece lined cuffs and insulated collar
- Velcro® adjustable cuffs
- Internal powder skirt
- Dropback design
- Shock cord adjustable hem

Matching Pants
See Page 55

	XSM	SML	MED	LRG	XLG
YOUTH CLOTHING SIZE	4-6	7-8	10-12	14-16	18-20
Gray/Reflex Blue	72-4701	72-4702	72-4704	72-4706	72-4708
Reflex Blue/Grape	72-4711	72-4712	72-4714	72-4716	72-4718
Hot Pink/Black	72-4721	72-4722	72-4724	72-4726	72-4728
Hot Pink/Hi-Vis	72-4731	72-4732	72-4734	72-4736	72-4738
Hi-Vis/Black	72-4741	72-4742	72-4744	72-4746	72-4748
Black/White	72-4771	72-4772	72-4774	72-4776	72-4778



Gray/Reflex Blue



Reflex Blue/Grape



Hot Pink/Black



Hi-Vis/Black



Black/White

LAUNCH REALTREE® GIRL'S G3

Retail \$194.95 - H (SM-LG)
\$199.95 - H (XL)

INSULATION: Fixed Castle ColdShield® quilted insulation
(200 g body/150 g sleeve)

WATERPROOFING: Ultra tough nylon shell with water resistant PU and DWR coatings

FEATURES:

- Internal Lycra® hand gaiters
- Zippered hand pockets
- 3M™ Scotchlite™ Reflective materials
- Double stitched seams
- Fleece lined cuffs and insulated collar
- Velcro® adjustable cuffs
- Internal powder skirt
- Dropback design
- Shock cord adjustable hem

	XSM	SML	MED	LRG	XLG
YOUTH CLOTHING SIZE	4-6	7-8	10-12	14-16	18-20
Realtree AP® Snow	72-4791	72-4792	72-4794	72-4796	72-4798

Realtree AP® Snow



REALTREE®
APS



Realtree AP® Snow/Hot Pink



BOLT GIRL'S G3

Retail \$183.95 - H (SM-LG)
\$189.95 - H (XL)

INSULATION: Fixed Castle ColdShield® quilted insulation
(200 g body/150 g sleeve)

WATERPROOFING: Ultra tough nylon shell with water resistant PU and DWR coatings



Reflex Blue

FEATURES:

- Internal Lycra® hand gaiters
- Zippered hand pockets
- 3M™ Scotchlite™ Reflective materials
- Double stitched seams
- Fleece lined cuffs and insulated collar
- Velcro® adjustable cuffs
- Internal powder skirt
- Dropback design
- Shock cord adjustable hem

	XSM	SML	MED	LRG	XLG
YOUTH CLOTHING SIZE	4-6	7-8	10-12	14-16	18-20
Hot Pink	72-4821	72-4822	72-4824	72-4826	72-4828
Hi-Vis/Hot Pink	72-4841	72-4842	72-4844	72-4846	72-4848
Reflex Blue	72-4851	72-4852	72-4854	72-4856	72-4858
White	72-4891	72-4892	72-4894	72-4896	72-4898



Hot Pink



Hi-Vis/Hot Pink



White



BOLT REALTREE® GIRL'S G3

Retail \$215.95 - H (SM-LG)
\$222.95 - H (XL)

INSULATION: Fixed Castle ColdShield® quilted insulation (200 g body/150 g sleeve)

WATERPROOFING: Ultra tough nylon shell with water resistant PU and DWR coatings

FEATURES:

- Internal Lycra® hand gaiters
- Zippered hand pockets
- 3M™ Scotchlite™ Reflective materials
- Double stitched seams
- Fleece lined cuffs and insulated collar
- Velcro® adjustable cuffs
- Internal powder skirt
- Dropback design
- Shock cord adjustable hem

	XSM	SML	MED	LRG	XLG
YOUTH CLOTHING SIZE	4-6	7-8	10-12	14-16	18-20
Realtree Xtra® Hi-Vis	72-4911	72-4912	72-4914	72-4916	72-4918
Realtree Xtra® Hot Pink	72-4931	72-4932	72-4934	72-4936	72-4938



Realtree Xtra®



Hi-Vis



Hot Pink



BOLT TODDLER G3

Retail \$129.95 - F

Castle
toddler
sizes

TODDLER

INSULATION: Castle ColdShield® quilted insulation (200 g body/150 g sleeve)

WATERPROOFING: Ultra tough soft-touch nylon shell with water resistant PU and DWR coatings



Red



DETACHABLE
MATCHING HOOD
Included

FEATURES:

- Zippered Bemberg lined hand pockets
- 3M™ Scotchlite™ Reflective materials
- Double stitched seams
- Fleece lined cuffs and insulated collar
- 360° elastic cuffs
- Dropback design
- Detachable 3-point adjustable hood



Blue



Yellow



Green



Flo Orange



Reflex Blue



Hot Pink

TODDLER CLOTHING SIZE

	2T	3T	4T	5T
Red	72-5112	72-5113	72-5114	72-5115
Blue	72-5122	72-5123	72-5124	72-5125
Yellow	72-5132	72-5133	72-5134	72-5135
Green	72-5142	72-5143	72-5144	72-5145
Flo Orange	72-5152	72-5153	72-5154	72-5155
Reflex Blue	72-5182	72-5183	72-5184	72-5185
Hot Pink	72-5192	72-5193	72-5194	72-5195



BOLT REALTREE® TODDLER G3

Retail \$159.95 - F

INSULATION: Castle ColdShield® quilted insulation (200 g body/150 g sleeve)

WATERPROOFING: Ultra tough soft-touch nylon shell with water resistant PU and DWR coatings

Hi-Vis



FEATURES:

- Zippered Bemberg lined hand pockets
- 3M™ Scotchlite™ Reflective materials
- Double stitched seams
- Fleece lined cuffs and insulated collar
- 360° elastic cuffs
- Dropback design
- Detachable 3-point adjustable hood



	2T	3T	4T	5T
TODDLER CLOTHING SIZE				
Realtree Xtra® Hi-Vis	72-5212	72-5213	72-5214	72-5215
Realtree Xtra® Orange	72-5222	72-5223	72-5224	72-5225
Realtree Xtra® Hot Pink	72-5232	72-5233	72-5234	72-5235

Orange

Hot Pink



YOUTH [BOYS]

FUEL SE BOY'S G5

Retail \$149.95 - H (SM-LG)
\$156.95 - H (XL)

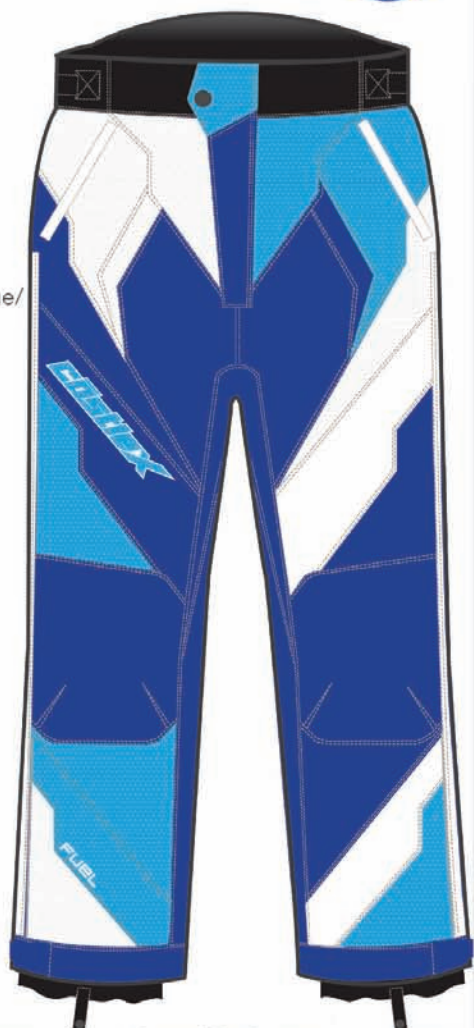
INSULATION: Castle ColdShield® quilted insulation (150 g)

WATERPROOFING: Ultra tough polyester/nylon shell with water resistant PU and DWR coatings

FEATURES:

- Critical seams sealed
- Oversized, pre-curved, padded Kevtec® gusseted knee panels
- Zippered Bemberg lined pockets
- 3M™ Scotchlite™ Reflective materials
- Velcro® adjustable waist with flex panels
- 360° adjustable length feature
- Inner snow gaiters attach to boots
- Raised padded action back rear panel

Reflex Blue/
White



Green/Flo Orange

Flo Orange/Hi-Vis

Orange/Gray



	XSM	SML	MED	LRG	XLG
YOUTH CLOTHING SIZE	4-6	7-8	10-12	14-16	18-20
Black	73-6171	73-6172	73-6174	73-6176	73-6178
Reflex Blue/White	73-6921	73-6922	73-6924	73-6926	73-6928
Green/Flo Orange	73-6941	73-6942	73-6944	73-6946	73-6948
Flo Orange/Hi-Vis	73-6951	73-6952	73-6954	73-6956	73-6958
Orange/Gray	73-6981	73-6982	73-6984	73-6986	73-6988



FUEL REALTREE® YOUTH G5

Retail \$179.95 - H (SM-LG)
\$185.95 - H (XL)

INSULATION: Castle ColdShield® quilted insulation (150 g)

WATERPROOFING: Ultra tough polyester/nylon shell with water resistant PU and DWR coatings

FEATURES:

- Critical seams sealed
- Oversized, pre-curved, padded Kevltec® gusseted knee panels
- Zippered Bemberg lined pockets
- 3M™ Scotchlite™ Reflective materials
- Velcro® adjustable waist with flex panels
- 360° adjustable length feature
- Inner snow gaiters attach to boots
- Raised padded action back rear panel

	XSM	SML	MED	LRG	XLG
YOUTH CLOTHING SIZE	4-6	7-8	10-12	14-16	18-20
Realtree AP® Snow	73-7071	73-7072	73-7074	73-7076	73-7078
Realtree Xtra®	73-7091	73-7092	73-7094	73-7096	73-7098

Realtree AP® Snow



Realtree Xtra®

Realtree Xtra®



Realtree AP® Snow





YOUTH [GIRL'S]

FUEL SE GIRL'S G5

Retail \$149.95 - H (SM-LG)
\$156.95 - H (XL)

INSULATION: Castle ColdShield® quilted insulation (150 g)

WATERPROOFING: Ultra tough polyester/nylon shell with water resistant PU and DWR coatings

FEATURES:

- Critical seams sealed
- Oversized, pre-curved, padded Kevtec® gusseted knee panels
- Zippered Bemberg lined pockets
- 3M™ Scotchlite™ Reflective materials
- Velcro® adjustable waist with flex panels
- 360° adjustable length feature
- Inner snow gaiters attach to boots
- Raised padded action back rear panel



Hot Pink/Hi-Vis

	XSM	SML	MED	LRG	XLG
YOUTH CLOTHING SIZE	4-6	7-8	10-12	14-16	18-20
Gray/Reflex Blue	73-7101	73-7102	73-7104	73-7106	73-7108
Reflex Blue/Grape	73-7111	73-7112	73-7114	73-7116	73-7118
Hot Pink/Hi-Vis	73-7131	73-7132	73-7134	73-7136	73-7138

All Black Version see page 55



Gray/Reflex Blue



Reflex Blue/Grape



BLISS *GIRLS PANT*

Retail \$154.95 - H (SM-LG)
\$159.95 - H (XL)

INSULATION: Castle ColdShield® quilted insulation (150 g)

WATERPROOFING: Comfortable and durable nylon shell with Ven-Tex® 1.0 windproof, waterproof, breathable and DWR coatings

FEATURES:

- Critical seams sealed
- Mid-rise, semi-relaxed stylish fit
- Velcro® adjustable waist
- Two zippered hand pockets
- Integrated belt loops
- Inner snow gaiters with silicone treated elastic attach to boots

	XSM	SML	MED	LRG	XLG
YOUTH CLOTHING SIZE	4-6	7-8	10-12	14-16	18-20
Girl's Black	C73-5971	C73-5972	C73-5974	C73-5976	73-5978



CR2 *BIB*

Retail \$124.95 - H (SM-LG)
\$129.95 - H (XL)

INSULATION: Castle ColdShield® quilted insulation (150 g)

WATERPROOFING: Durable high tenacity nylon shell with water resistant PU and DWR coatings

FEATURES:

- Critical seams sealed
- 500D Airdura® reinforcement in seat, knees and inner lower legs
- 3M™ Scotchlite™ Reflective materials
- Pre-curved seat and knee panels
- Zippered Bemberg lined pockets
- 360° adjustable length feature

	XSM	SML	MED	LRG	XLG
YOUTH CLOTHING SIZE	4-6	7-8	10-12	14-16	18-20
Youth Black	73-2271	473-2272	473-2274	473-2276	473-2278

FUSION MID-LAYER JACKET

Retail \$139.95 - H

FEATURES:

- Semi-fitted athletic cut
- Low bulk design for optimal mid-layer comfort
- 350 g polyester fleece/Spandex™ moisture transfer construction
- 4-way stretch performance fabric moves with you
- Flat stitch seams for enhanced comfort
- Designed to rapidly transfer excess moisture away from the user to keep you warm and dry
- Dual zippered hand pockets
- Thermal welded chest pocket
- YKK® zippers
- Heat bonded rubberized logo treatments



	XSM	SML	MED	LRG	XLG	2XL
JACKET SIZE	0-2	4-6	8-10	12-14	16-18	20-22
Black	78-2001	78-2002	78-2004	78-2006	78-2008	78-2009

FUSION MID-LAYER PANT

Retail \$99.95 - H

FEATURES:

- Semi-Relaxed athletic women's fit
- Low bulk design for optimal mid-layer comfort
- 350 g polyester fleece/Spandex™ moisture transfer construction
- 4-way stretch performance fabric moves with you
- Flat stitch seams for enhanced comfort
- Designed to rapidly transfer excess moisture away from the user to keep you warm and dry
- Comfortable elasticized waist with integrated belt loops
- Dual zippered hand pockets
- YKK® zipper
- Heat bonded rubberized logo treatments



	XSM	SML	MED	LRG	XLG	2XL
Black	78-2101	78-2102	78-2104	78-2106	78-2108	78-2109

FUSION MID-LAYER JACKET

Retail \$139.95 - H



FEATURES:

- Semi-fitted athletic cut
- Low bulk design for optimal mid-layer comfort
- 350 g polyester fleece/Spandex™ moisture transfer construction
- 4-way stretch performance fabric moves with you
- Flat stitch seams for enhanced comfort
- Designed to rapidly transfer excess moisture away from the user to keep you warm and dry
- Dual zippered hand pockets
- Thermal welded chest pocket
- YKK® zippers
- Heat bonded rubberized logo treatments

	SML	MED	LRG	XLG	2XL	3XL
CHEST SIZE	36-38	39-41	42-44	46-48	50-58	54-56
Black	78-1002	78-1004	78-1006	78-1008	78-1009	78-1009T

FUSION MID-LAYER PANT

Retail \$99.95 - H



FEATURES:

- Semi-Relaxed athletic fit
- Low bulk design for optimal mid-layer comfort
- 350 g polyester fleece/Spandex™ moisture transfer construction
- 4-way stretch performance fabric moves with you
- Flat stitch seams for enhanced comfort
- Designed to rapidly transfer excess moisture away from the user to keep you warm and dry
- Comfortable elasticized waist with integrated belt loops
- Dual zippered hand pockets
- YKK® zipper
- Heat bonded rubberized logo treatments

	SML	MED	LRG	XLG	2XL	3XL
Black	78-1102	78-1104	78-1106	78-1108	78-1109	78-1109T

TRS Flex - 475-0112 Retail \$49.95 - J

- The ultimate in comfort and protection
- DuPont CoolMax® on face and top of head, transfers moisture and dries quickly
- Dynamic 4-way flex 360° windsirt made with Ven-Tex® windproof membrane and soft micro-fleece lining
- Spandex® panel across back of head for comfortable secure fit
- Machine washable



Hinged Balaclava

Retail \$24.95-J

S/M - 475-0001 L/XL - 475-0002

- Hinged design for maximum comfort
- Mouth/Neck portions pivot downward at "hinge"
- 88% Polyester and 12% Spandex construction
- Machine washable



Minus 33 Balaclava - 475-0113

Retail \$44.95 - J

- 100% Merino Wool
- 230 g/m2 interlock knit construction
- Flat lock stitch seams to prevent chafing
- Naturally anti-microbial and anti-bacterial
- Machine washable
- One size fits most



Fog Free Balaclava - 475-6258

Retail \$32.95-J

- Made from Polyester and Neoprene
- Super breath deflector
- Eliminates fog from forming on glasses, goggles and shields by redirecting your breath from your helmet
- One size fits all



Barrier Balaclava - 475-0111

Retail \$30.95 - J

- Barrier windproof membrane on neck
- Micro-fleece cape for amximum wicking fabric
- Flat lock stitch seams
- Machine washable
- One size fits all



CoolMax Balaclava - 475-0107

Retail \$13.95-J

- Super soft for maximum comfort
- CoolMax® by Invista is designed to out perform all other fibres in terms of keeping you dry and warm
- Machine washable
- One size fits all



Balaclava - Retail \$6.25 - J

Polyester/Cotton 475-6550 Silk/Cotton 475-6551

- Wicks away moisture from skin, protects face, head and neck from the cold
- Can be worn comfortable under a helmet without affecting the fit of the helmet
- Extra long neck for protection from the wind and frostbite
- One size fits all



Fog Free Mask - 475-6461 Retail \$29.95-J

- 70% Neoprene / 30% Nylon
- Super breath deflector
- Eliminates fog from forming on glasses, goggles and shields by redirecting your breath from your helmet
- Wearable with open face helmet
- One size fits all



Race Contoured Mask - 475-6570

Retail \$12.95 - J

- 85% Neoprene and 15% Nylon construction
- Nylon knit laminated to foam
- Elastic strap secures mask to face
- Large exhaust vent
- 7" long deckie for maximum throat protection
- One size fits all



Fog Free Mask - 475-6530

Retail \$9.95-J

- 85% Rubber / 15% Nylon
- One size fits all





REGULATOR SOCK

Retail \$34.95 - H

- Naturally anti-microbial 55% Merino wool, 30% Nylon, 10% Polyester & 5% Spandex
- Durable knit construction holds form and fit wash after wash
- Reinforced toe, sole and shin adds comfort and warmth
- Flat toe seam for improved fit & comfort
- Machine washable

	MED	LRG	XLG
Men's US Shoe Size	6-8.5	9-11.5	12-14.5
Gray - Red	78-4004	78-4006	78-4008



Women's REGULATOR SOCK

Retail \$34.95 - H

- Naturally anti-microbial 55% Merino wool, 30% Nylon, 10% Polyester & 5% Spandex
- Durable knit construction holds form and fit wash after wash
- Reinforced toe, sole and shin adds comfort and warmth
- Flat toe seam for improved fit & comfort
- Machine washable

	SML	MED	LRG
Women's US Shoe Size	4-6.5	7-9.5	10-12.5
Gray - Pink	78-4102	78-4104	78-4106

Minus 33



DAY HIKER SOCK

Retail \$24.95 - H

- Moisture wicking 85% Merino wool, 13% Stretch Nylon, 2% Spandex
- Full plush wool cushioned arch support
- Machine washable and dryable
- Flat toe seam stretch fibers
- Impact areas reinforced with double nylon for durability

	SML	MED	LRG	XLG
Sock Sizing Chart Page 143				
Gray	79-4152	79-4154	79-4156	79-4158



MULTISPORT FULL LENGTH SOCK

Retail \$18.95 - H

- Moisture wicking 52% Merino wool, 35% Polypropylene, 12% Stretch Nylon, 1% Spandex
- Full plush wool cushioned arch support
- Machine washable and dryable
- Flat toe seam stretch fibers
- Impact areas reinforced with double nylon for durability

	SML	MED	LRG	XLG
Sock Sizing Chart Page 143				
Navy	79-4122	79-4124	79-4126	79-4128

TRS G2

Retail \$99.95 - 1



Thinsulate Platinum
INSULATION

INSULATION: 3M™ Thinsulate™ Platinum Insulation (250 g top of hand /150 g palm)

WATERPROOFING: Soft touch high abrasion resistant polyester with Hipora® windproof, waterproof, breathable full membrane and water resistant Pittards™ leather across top of hand and palm

FEATURES:

- X-Touch Conductive Finger Tips™ on each hand allow for use of touchscreen electronics without removing gloves. Great for use with smart phones, tablets, GPS units, ATMs, gas station services screens, digital cameras, and more!
- Pre-curved fingers
- Reflective elements
- Ladder lock wrist closure
- Shock cord adjustable gauntlet
- Double layered Pittards™ leather palm offers high grip properties
- Super soft Bemberg lining

SML MED LRG XLG 2XL 3XL

Men's 473-6002 473-6004 473-6006 473-6008 473-6009 473-6009T

Also Available in Women's Sizes



RIZER G7

Retail \$84.95 - 1



Thinsulate Platinum
INSULATION

INSULATION: 3M™ Thinsulate™ Platinum Insulation (200 g top of hand /150 g palm)

WATERPROOFING: 500D Airdura® and soft touch nylon outer shell with a Hipora® windproof, waterproof, breathable full membrane and DWR coating

FEATURES:

- X-Touch Conductive Finger Tips™ on each hand allow for use of touchscreen electronics without removing gloves. Great for use with smart phones, tablets, GPS units, ATMs, gas station services screens, digital cameras, and more!
- Full leather palm
- 3M™ Scotchlite™ Reflective materials
- Gusseted action panels on fingers and knuckles
- Pre-curved fingers
- Ladder lock wrist closure
- Shock cord adjustable gauntlet
- Super soft Bemberg lining



Blue

SML MED LRG XLG 2XL 3XL

Red	74-4112	74-4114	74-4116	74-4118	74-4119	74-4119T
Blue	74-4122	74-4124	74-4126	74-4128	74-4129	74-4129T
Yellow	74-4132	74-4134	74-4136	74-4138	74-4139	74-4139T
Green	74-4142	74-4144	74-4146	74-4148	74-4149	74-4149T
Black	74-4172	74-4174	74-4176	74-4178	74-4179	74-4179T
Hi-Vis	74-4182	74-4184	74-4186	74-4188	74-4189	74-4189T

Also Available in Women's Sizes



Red

Yellow

Green

Black

Hi-Vis

CR2 G6

Retail \$69.95 - 1



INSULATION: 3M™ Thinsulate™ Extra Warmth Insulation (200 g top of hand / 150 g palm)

WATERPROOFING: 420D high tenacity nylon outer shell with a Hipora® windproof, waterproof, breathable full membrane and DWR coating

FEATURES:

- Synthetic grip palm
- 3M™ Scotchlite™ Reflective materials
- Gusseted action panels on fingers and knuckles
- Pre-curved fingers
- Ladder lock wrist closure and shock cord adjustable gauntlet
- Reflective elements
- Super soft Bemberg lining



Red

	XSM	SML	MED	LRG	XLG	2XL	3XL
Red	--	74-3512	74-3514	74-3516	74-3518	74-3519	--
Blue	--	74-3522	74-3524	74-3526	74-3528	74-3529	--
Yellow	--	74-3532	74-3534	74-3536	74-3538	74-3539	--
Green	--	74-3542	74-3544	74-3546	74-3548	74-3549	--
Black	74-3571	74-3572	74-3574	74-3576	74-3578	74-3579	74-3579T



Red

Yellow

Green

Black

MISSION *GLOVE*

Retail \$69.95 - 1



INSULATION: 3M™ Thinsulate™ Extra Warmth Insulation (60 g top of hand/palm)

WATERPROOFING: Spandura® & 500D Airdura® outer shell with a Hipora® windproof, waterproof, breathable membrane & DWR coating

FEATURES:

- Neoprene padded flex panels on fingers and knuckles
- Double layered micro fiber palm
- Moto-style palm for maximum feel
- Silicone treated fingers for increased grip
- Pre-curved fingers and palm
- Easy pull on tab
- Ladder lock wrist closure
- Shock cord adjustable gauntlet
- Super soft Bemberg lining
- 3M™ Scotchlite™ Reflective materials

SML MED LRG XLG 2XL 3XL

Black 473-6102 473-6104 473-6106 473-6108 473-6109 473-6109T



LAUNCH G2 GLOVE

Retail \$61.95 - 1



INSULATION: 3M™ Thinsulate™ Extra Warmth Insulation (60 g top of hand/palm)

WATERPROOFING: Spandura® & 500D Airdura® outer shell with a Hipora® windproof, waterproof, breathable membrane & DWR coating

FEATURES:

- Neoprene padded flex panels on fingers and knuckles
- Double layered micro fiber palm
- Moto-style palm for maximum feel
- Silicone treated fingers for increased grip
- Pre-curved fingers and palm
- Easy pull on tab
- Super soft Bemberg lining
- Velcro® adjustable wrist closure
- Neoprene padded wrist gauntlet

SML	MED	LRG	XLG	2XL	3XL
-----	-----	-----	-----	-----	-----

Black	473-6022	473-6024	473-6026	473-6028	473-6029	473-6029T
-------	----------	----------	----------	----------	----------	-----------



SWITCH G5 GLOVE

Retail \$59.95 - 1



INSULATION: 3M™ Thinsulate™ Extra Warmth Insulation (40 g top of hand)

WATERPROOFING: Water resistant Spandura® shell with a Hipora® windproof, waterproof, breathable full membrane and DWR coating

FEATURES:

- Water resistant Spandex® gussets
- Micro fiber palm
- Neoprene padded wrist gauntlet
- Velcro® soft touch wrist closure
- Flex panels across fingers and knuckles
- Silicone tabbed finger tips for increased grip

	SML	MED	LRG	XLG	2XL	3XL
--	-----	-----	-----	-----	-----	-----

Black	74-3672	74-3674	74-3676	74-3678	74-3679	74-3679T
White	74-3792	74-3794	74-3796	74-3798	74-3799	--



White



Black

PLATFORM *GLOVE*

Retail \$55.95 - 1

INSULATION: Castle Coldshield® insulation (180 g top of hand/120 g palm)

WATERPROOFING: High tenacity Dobby nylon shell with Ven-Tex® 3.0 windproof, waterproof, breathable membrane & DWR coating

FEATURES:

- Synthetic non-slip reinforced palm and thumb
- Pre-curved fingers
- Super soft Bemberg lining
- Foam protection on fingers and knuckles
- Velcro® adjustable wrist closure
- Shock cord adjustable gauntlet

XSM SML MED LRG XLG 2XL 3XL

473-6301 473-6302 473-6304 473-6306 473-6308 473-6309 473-6309T

Also Available in Women's Sizes



PLATFORM *MITT*

Retail \$48.95 - 1

INSULATION: Castle Coldshield® insulation (180 g top of hand/120 g palm) plus Dexfil insulation (180 g top of hand)

WATERPROOFING: High tenacity Dobby nylon shell with Ven-Tex® 3.0 windproof, waterproof, breathable membrane & DWR coating

FEATURES:

- Synthetic non-slip reinforced palm and thumb
- Pre-curved hand
- Super soft Bemberg lining
- 3M™ Scotchlite™ Reflective materials
- Shock cord adjustable gauntlet

XSM SML MED LRG XLG 2XL 3XL

473-6351 473-6352 473-6354 473-6356 473-6358 473-6359 473-6359T

Also Available in Women's Sizes



TRS G2 Retail \$99.95 - 1



INSULATION: 3M™ Thinsulate™ Platinum Insulation (250 g top of hand /150 g palm)

WATERPROOFING: Soft touch high abrasion resistant polyester with Hipora® windproof, waterproof, breathable full membrane and water resistant Pittards™ leather across top of hand and palm

FEATURES:

- X-Touch Conductive Finger Tips™ on each hand allow for use of touchscreen electronics without removing gloves. Great for use with smart phones, tablets, GPS units, ATMs, gas station services screens, digital cameras, and more!
- Double layered Pittards™ leather palm offers high grip properties
- Super soft Bemberg lining and pre-curved fingers
- Reflective elements
- Ladder lock wrist closure and shock cord adjustable gauntlet

XSM SML MED LRG XLG 2XL

Women's G2 473-6201 473-6202 473-6204 473-6206 473-6208 473-6209



RIZER G7

Retail \$84.95 - 1



White

INSULATION: 3M™ Thinsulate™ Platinum Insulation (200 g top of hand /150 g palm)

WATERPROOFING: 500D Airdura® and soft touch nylon outer shell with a Hipora® windproof, waterproof, breathable full membrane and DWR coating

FEATURES:

- X-Touch Conductive Finger Tips™ on each hand allow for use of touchscreen electronics without removing gloves. Great for use with smart phones, tablets, GPS units, ATMs, gas station services screens, digital cameras, and more!
- Full leather palm
- 3M™ Scotchlite™ Reflective materials
- Gusseted action panels on fingers and knuckles
- Pre-curved fingers
- Ladder lock wrist closure
- Shock cord adjustable gauntlet
- Super soft Bemberg lining

	XSM	SML	MED	LRG	XLG	2XL
--	-----	-----	-----	-----	-----	-----

Black	74-4271	74-4272	74-4274	74-4276	74-4278	74-4279
White	74-4231	74-4232	74-4234	74-4236	74-4238	74-4239
Hot Pink	74-4221	74-4222	74-4224	74-4226	74-4228	74-4229

*New Color Available



Black



New! Hot Pink

PLATFORM *GLOVE*

Retail \$55.95 - 1

INSULATION: Castle Coldshield® insulation (180 g top of hand /120 g palm)

WATERPROOFING: High tenacity Dobby nylon shell with Ven-Tex® 3.0 windproof, waterproof, breathable membrane & DWR coating

FEATURES:

- Synthetic non-slip reinforced palm and thumb
- Pre-curved fingers
- Super soft Bemberg lining
- Foam protection on fingers and knuckles
- Velcro® adjustable wrist closure
- Shock cord adjustable gauntlet



XSM

SML

MED

LRG

XLG

Black	473-6381	473-6382	473-6384	473-6386	473-6388
-------	----------	----------	----------	----------	----------

PLATFORM *MITT*

Retail \$48.95 - 1

INSULATION: Castle Coldshield® insulation (180 g top of hand /120 g palm) plus Dexfil insulation (150g top of hand)

WATERPROOFING: High tenacity Dobby nylon shell with Ven-Tex® 3.0 windproof, waterproof, breathable membrane & DWR coating

FEATURES:

- Synthetic non-slip reinforced palm and thumb
- Pre-curved hand
- Super soft Bemberg lining
- 3M™ Scotchlite™ Reflective materials
- Shock cord adjustable gauntlet



XSM

SML

MED

LRG

XLG

Black	473-6331	473-6332	473-6334	473-6336	473-6338
-------	----------	----------	----------	----------	----------



Black

New! Hot Pink

PLATFORM YOUTH GLOVE

Retail \$46.95 - H

INSULATION: Castle Coldshield® insulation (180 g top of hand /120 g palm)

WATERPROOFING: High tenacity Dobby nylon shell with Ven-Tex® 3.0 windproof, waterproof, breathable membrane & DWR coating

FEATURES:

- Synthetic non-slip reinforced palm and thumb
- Pre-curved fingers
- Super soft Bemberg lining
- Foam protection on fingers and knuckles
- Velcro® adjustable wrist closure
- Shock cord adjustable gauntlet

	SML	MED	LRG
Black	473-6312	473-6314	473-6316
Hot Pink	C73-6432	C73-6434	C73-6436



PLATFORM YOUTH MITT

Retail \$40.95 - H

INSULATION: Castle Coldshield® insulation (180 g top of hand /120 g palm) plus Dexfil insulation (150g top of hand)

WATERPROOFING: High tenacity Dobby nylon shell with Ven-Tex® 3.0 windproof, waterproof, breathable membrane & DWR coating

FEATURES:

- Synthetic non-slip reinforced palm and thumb
- Pre-curved hand
- Super soft Bemberg lining
- 3M™ Scotchlite™ Reflective materials
- Shock cord adjustable gauntlet

	SML	MED	LRG
Youth - Black	473-6362	473-6364	473-6366



PLATFORM TODDLER MITT

Retail \$34.95 - F

INSULATION: Wormal® insulation (180 g top of hand /120 g palm)

WATERPROOFING: High tenacity Dobby nylon shell with Ven-Tex® 3.0 windproof, waterproof, breathable membrane & DWR coating

FEATURES:

- Synthetic non-slip reinforced palm and thumb
- Pre-curved hand
- Super soft Bemberg lining
- 3M™ Scotchlite™ Reflective materials
- 360° elastic cuff

	2T	4T	6T
Toddler - Black	473-6372	473-6374	473-6376

COMFORT RATING

Thermal factors such as air temp, radiant temp, air velocity, and humidity all contribute to our thermal comfort. Stubbornly, Mother Nature refuses us the ability to control these thermal factors.

Personal factors such as the type of clothing we wear and the activity levels we perform at, are two elements of thermal comfort we can control. Additional variables that affect comfort are circulation in the feet, presence of moisture, body temp, wind chill and sock quality.



castlesales.com

FORCE BOOT

Retail \$229.95 - H

INSULATION: 3-Layer Merino wool blend insulation with wicking air mesh and perforated air trap foam. Castle Cold Shield® Technology: removable insole, wicking wool blend with metallic heat reflecting layer

WATERPROOFING: 1000D nylon upper with Armstrong PU coated leather. Castle DRY-X® waterproof membrane

FEATURES:

- Reflective elements
- Molded high abrasion heel
- Castle Speed Lace System with an articulated padded collar
- Rubber sole with internal EVA shock comfort chambers

MEN'S SHOE SIZE

8

9

10

11

12

13

Force Boot

484-6008

484-6009

484-6010

484-6011

484-6012

484-6013



Molded High Abrasion Heel



Articulated Padded Collar



Speed Lace System



Cold Shield® Technology

PLATFORM *BOOT*

Retail \$119.95 - H

INSULATION: Removable Castle Cold Shield® liner offers comfort to -40° F

WATERPROOFING: Scotchguard® coated leather upper

FEATURES:

- Reflective elements
- Quick adjust Velcro® top closure
- Easy slide lower quick ratchet buckle
- 100% natural rubber sole

MEN'S SIZE	3	4	5	6	7	8	9	10	11	12	13
------------	---	---	---	---	---	---	---	----	----	----	----

484-1603	484-1604	484-1605	484-1606	484-1607	484-1608	484-1609	484-1610	484-1611	484-1612	484-1613
----------	----------	----------	----------	----------	----------	----------	----------	----------	----------	----------



COMFORT RATING

Thermal factors such as air temp, radiant temp, air velocity, and humidity all contribute to our thermal comfort. Stubbornly, Mother Nature refuses us the ability to control these thermal factors.

Personal factors such as the type of clothing we wear and the activity levels we perform at, are two elements of thermal comfort we can control. Additional variables that affect comfort are circulation in the feet, presence of moisture, body temp, wind chill and sock quality.

-60°
-51°

castlesales.com

BARRIER WOMEN'S BOOT

Retail \$199.95 - H

INSULATION: 3-Layer Merino wool blend insulation with wicking air mesh and perforated air trap foam. Castle Cold Shield® Technology: removable insole, wicking wool blend with metallic heat reflecting layer

WATERPROOFING: 1000D nylon upper with Armstrong PU coated leather. Castle DRY-X® waterproof membrane

FEATURES:

- Reflective elements
- Molded high abrasion heel
- Castle Quick Connect buckle system
- Snow shield gaiter with bungee cord lock
- Rubber sole with internal EVA shock comfort chambers

WOMEN'S SHOE SIZE	6	7	8	9	10	11
-------------------	---	---	---	---	----	----

Women's Barrier	484-1306	484-1307	484-1308	484-1309	484-1310	484-1311
-----------------	----------	----------	----------	----------	----------	----------



Quick Connect System



Molded High Abrasion Heel



Cold Shield® Technology

BARRIER BOOT

Retail \$209.95 - H

COMFORT RATING

Thermal factors such as air temp, radiant temp, air velocity, and humidity all contribute to our thermal comfort. Stubbornly, Mother Nature refuses us the ability to control these thermal factors.

Personal factors such as the type of clothing we wear and the activity levels we perform at, are two elements of thermal comfort we can control.

Additional variables that affect comfort are circulation in the feet, presence of moisture, body temp, wind chill and sock quality.

-60%
-51%

castlesales.com

© 2011 Castle Shoe Co. Inc.

INSULATION: 3-Layer Merino wool blend insulation with wicking air mesh and perforated air trap foam. Castle Cold Shield® Technology: removable insole, wicking wool blend with metallic heat reflecting layer

WATERPROOFING: 1000D nylon upper with Armstrong PU coated leather. Castle DRY-X® waterproof membrane

FEATURES:

- Reflective elements
- Molded high abrasion heel
- Castle Quick Connect buckle system
- Snow shield gaiter with bungee cord lock
- Rubber sole with internal EVA shock comfort chambers

MEN'S SHOE SIZE	7	8	9	10	11	12	13
-----------------	---	---	---	----	----	----	----

Barrier Boot	484-6027	484-6028	484-6029	484-6030	484-6031	484-6032	484-6033
--------------	----------	----------	----------	----------	----------	----------	----------



Quick Connect System



Molded High Abrasion Heel



Cold Shield® Technology

FORCE SNOW

Force Goggles - \$64.95 - H

Replacement Dual Lens

Solid - \$17.95-H

Mirrored - \$22.95-H

FEATURES:

- Flexible polyurethane frame
- Custom over-sized triple stage foam utilizing ultra-wick quick dry fleece
- Custom molded rubberized nose guard protects nose area from excessive wind and debris (replacements available)
- UV 400 dual pane mirrored, anti-fog/scratch coated replaceable lens
- Silicone beaded strap maintains proper strap placement
- Micro-fiber carry bag included
- Complete with mirror lens (color as shown)



Matte Black
with Mirror Silver Lens

CUSTOM OVER-SIZED FOAM



FORCE SNOW

Black - Mirror Lens	453-8600
Matte Black	453-8601
Matte White	453-8602
Black - Clear Lens	453-8610

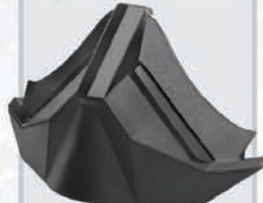
REPLACEMENT DUAL LENSES

Clear - Dual	453-9112A
Smoke - Dual	453-9112B
Yellow - Dual	453-9112C
Blue - Dual	453-9112D
Red - Dual	453-9112E
Mirror Red - Dual	453-9112F
Mirror Blue - Dual	453-9112G
Mirror Silver - Dual	453-9112H
Mirror Green - Dual	453-9112J

NOSE GUARD

Black	64-9910A
-------	----------

Replacement Nose Guard



Black Part #64-9910A



Black
with Mirror Silver Lens



Matte White
with Mirror Silver Lens



Black
with Clear Lens

FORCE SE SNOW

Force SE Goggles - \$74.95 - H

Replacement Dual Lens

Solid - \$17.95-H

Mirrored - \$22.95-H

FEATURES:

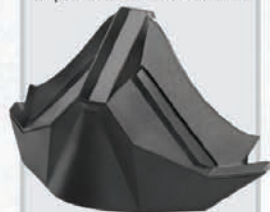
- Flexible polyurethane frame
- Custom over-sized triple stage foam utilizing ultra-wick quick dry fleece
- Custom molded rubberized nose guard protects nose area from excessive wind and debris (replacements available)
- UV 400 dual pane mirrored, anti-fog/scratch coated replaceable lens
- Silicone beaded strap maintains proper strap placement
- Micro-fiber carry bag included
- Complete with mirror lens (color as shown)



X1 Hi-Vis
with Mirror Silver Lens



Replacement Nose Guard



Black Part #64-9910A

FORCE SE SNOW

X1 Black	453-8603
X1 Green	453-8604
X1 Hi-Vis	453-8605
X2 Orange	453-8606
X2 Magenta	453-8607
X2 Red	453-8608

REPLACEMENT DUAL LENSES

Clear - Dual	453-9112A
Smoke - Dual	453-9112B
Yellow - Dual	453-9112C
Blue - Dual	453-9112D
Red - Dual	453-9112E
Mirror Red - Dual	453-9112F
Mirror Blue - Dual	453-9112G
Mirror Silver - Dual	453-9112H
Mirror Green - Dual	453-9112J

NOSE GUARD

Black	64-9910A
-------	----------



X1 Black
with Mirror Silver Lens



X1 Green
with Mirror Green Lens



X2 Orange
with Mirror Red Lens



X2 Magenta
with Mirror Silver Lens



X2 Red
with Mirror Red Lens

STAGE OTG *SNOW*

Stage Goggles - \$59.95 - H



Red
with Yellow Lens

FEATURES:

- Designed for "over the glass" use
- Custom over-sized triple stage foam utilizing ultra-wick quick dry fleece
- UV 380 dual pane anti-fog/anti-scratch coated replaceable lens
- Silicone beaded strap maintains proper strap placement
- Micro fiber carry bag included
- Complete with dual lens (color as shown)



CUSTOM OVER-SIZED FOAM

STAGE SNOW

Red	453-8300
Blue	453-8301
Black - Yellow Lens	453-8302
Matte Black	453-8305
Black - Clear Lens	453-8310

REPLACEMENT DUAL LENSES

Clear - Dual	453-9133A
Smoke - Dual	453-9133B
Yellow - Dual	453-9133C
Blue - Dual	453-9133D
Red - Dual	453-9133E
Mirror Red - Dual	453-9133F
Mirror Blue - Dual	453-9133G
Mirror Silver - Dual	453-9133H

Replacement Dual Lens
Solid - \$17.95-H
Mirrored - \$22.95-H



Blue
with Yellow Lens



Black
with Yellow Lens



Matte Black
with Yellow Lens



Black
with Clear Lens

RIOT SNOW

Riot Goggles - \$65.95 - H



Ace
with Mirror Blue Lens



FEATURES:

- Flexible polyurethane frame
- Custom over-sized triple stage foam utilizing ultra-wick quick dry fleece
- UV 400 dual pane mirrored, anti-fog/anti-scratch coated replaceable lens
- Silicone beaded strap maintains proper strap placement
- Micro-fiber carry bag included
- Complete with mirror lens (color as shown)



RIOT SNOW

Kranked	453-8504
Ace	453-8506
Alias	453-8507
Slash	453-8508

REPLACEMENT DUAL LENSES

Clear - Dual	453-9144A
Smoke - Dual	453-9144B
Yellow - Dual	453-9144C
Blue - Dual	453-9144D
Red - Dual	453-9144E
Mirror Red - Dual	453-9144F
Mirror Blue - Dual	453-9144G
Mirror Silver - Dual	453-9144H

Replacement Dual Lens

Solid - \$17.95-H

Mirrored - \$22.95-H



Kranked
with Mirror Silver Lens



Alias
with Mirror Silver Lens



Slash
with Mirror Red Lens

LAUNCH SNOW

Launch Goggles - \$55.95 - H



Black
with Yellow Lens

FEATURES:

- Flexible polyurethane frame
- Custom over-sized triple stage foam utilizing ultra-wick quick dry fleece
- UV 380 dual pane anti-fog/anti-scratch coated replaceable lens
- Standard Hi-Def yellow lens offers enhanced visibility
- Silicone beaded strap maintains proper strap placement
- Micro fiber carry bag included

LAUNCH SNOW

Red	453-8400
Dark Blue	453-8401
Black	453-8402
Matte Black	453-8403
White	453-8406

Replacement Dual Lens

Solid - \$17.95-H
Mirrored - \$22.95-H

REPLACEMENT DUAL LENSES

Clear - Dual	453-9122A
Smoke - Dual	453-9122B
Yellow - Dual	453-9122C
Blue - Dual	453-9122D
Red - Dual	453-9122E
Mirror Red - Dual	453-9122F
Mirror Blue - Dual	453-9122G
Mirror Silver - Dual	453-9122H



Red
with Yellow Lens



Dark Blue
with Yellow Lens



Matte Black
with Yellow Lens



White
with Yellow Lens



BACK

DELUXE HELMET BAG

RETAIL

Deluxe	C98-4062	\$33.95-H
--------	----------	-----------

- Heavy duty weather resistant nylon outer shell
- Soft, anti-scratch synthetic fleece lining
- Wear resistant bottom panel with large air-flow ports
- Large zippered outer cargo pocket with custom printed logo
- Mesh wet storage pocket plus additional pocket with Velcro® closure on back
- Padded Velcro® closure handle straps



STANDARD HELMET BAG

RETAIL

Standard	C98-4060	\$21.95-H
----------	----------	-----------

- Durable weather resistant nylon outer shell
- Soft, anti-scratch Bemberg lining
- Wear resistant reinforced bottom panel with helmet D-ring lock port
- Full length 2-way zippered opening
- Custom printed logos
- Padded Velcro® closure handle straps



GEAR BAG

RETAIL

Black	626-4065	\$69.95-H
-------	----------	-----------

- Constructed of heavy-duty nylon exterior
- Nylon mesh side pockets
- Side zipper pockets
- Hand and removable shoulder strap
- Dimensions: 36" x 18" x 18"



MEN'S JACKET COMPARISON CHART

THRUST	FORCE	SURGE	CHARGE
SHELL MATERIAL			
Polyester & Nylon	Polyester & Nylon	Soft-Touch Polyester	Polyester & Nylon
SHELL INSULATION			
---	---	---	3M™ Thinsulate™ Platinum 160g body/100g sleeve
REMOVABLE LINER			
3M™ Thinsulate™ Platinum 3-in-1 Puff-Style Jacket 150g body/120g sleeve	3M™ Thinsulate™ Platinum 120g	---	3M™ Thinsulate™ 60g
WATERPROOFING			
VEN-TEX® 2.0 Laminated Materials 3.0 Laminate Membrane Liner	VEN-TEX® 2.0 Laminated Membrane	VEN-TEX® 2.0 Laminated Membrane	VEN-TEX® 2.0 Laminated Membrane
DWR Coated	DWR Coated	DWR Coated	DWR Coated
VENTILATION			
VENTEC® 2-Way Core & Sleeve Vents	VENTEC® Front & Back Core Vents	VENTEC® Front & Back Core Vents	VENTEC® 2-Way Core Vent
FEATURES			
• Fleece Lined Cuffs & Insulated Collar w/Chin Saver Placket	• Fleece Lined Cuffs & Insulated Collar w/Chin Saver Placket	• Fleece Lined Cuffs & Insulated Collar w/Chin Saver Placket	• Fleece Lined Cuffs & Insulated Collar w/Chin Saver Placket
• Shock Cord Adjustable Collar & Hem	• Shock Cord Adjustable Collar & Hem	• Shock Cord Adjustable Collar & Hem	• Shock Cord Adjustable Collar & Hem (Dropback)
• 3M™ Scotchlite™ Reflective	• 3M™ Scotchlite™ Reflective	• 3M™ Scotchlite™ Reflective	• 3M™ Scotchlite™ Reflective
• Velcro® Adjustable Cuffs	• Velcro® Adjustable Cuffs	• Velcro® Adjustable Cuffs	• Velcro® Adjustable Cuffs
• Critical Seams Sealed Shell / Fully Seam Sealed Membrane	• Critical Seams Sealed	• Fully Seam Sealed	• Critical Seams Sealed
• Lycra® hand gaiters	• Lycra® hand gaiters	• Lycra® hand gaiters	• Lycra® hand gaiters
• Zip-Out Stretch Powder Skirt	• Zip-Out Stretch Powder Skirt	• Zip-Out Stretch Powder Skirt	---
• Comfort-Flow™ Mesh Lined Shell	• Comfort-Flow™ Mesh Lined Shell	• Comfort-Flow™ Mesh Lined Shell	• Comfort-Flow™ Mesh Lined Shell
• Magnetic & Snap Placket	• Magnetic & Snap Placket	• Magnetic & Snap Placket	• Magnetic Placket
• Integrated goggle wipe	• Integrated goggle wipe	• Integrated goggle wipe	• Integrated goggle wipe
---	• Spandex® Storage Pockets	• Spandex® Storage Pockets	• Spandex® Storage Pockets
---	---	• Removable adjustable hood	---
3 YEAR WARRANTY	3 YEAR WARRANTY	3 YEAR WARRANTY	1 YEAR WARRANTY
<i>Sizes : SML-3XL</i>	<i>Sizes : SML-3XL</i>	<i>Sizes : SML-3XL</i>	<i>Sizes : SML-5XL</i>

MEN'S JACKET COMPARISON CHART

LAUNCH	BOLT	SCOUT	BLADE	PLATFORM
SHELL MATERIAL				
Polyester & Nylon	Polyester & Nylon	Soft-Touch Nylon	Polyester & Nylon	Polyester & Nylon
SHELL INSULATION				
3M™ Thinsulate™ Extra Warmth 150g body/100g sleeve	3M™ Thinsulate™ Extra Warmth 200g body/150g sleeve	---	ColdShield® 200g body/150g sleeve	ColdShield® 200g body/150g sleeve
REMOVABLE LINER				
3M™ Thinsulate™ 60g	---	---	---	---
WATERPROOFING				
VEN-TEX® 1.0 <i>Coated Shell Materials</i>	VEN-TEX® 1.0 <i>Coated Shell Materials</i>	VEN-TEX® 3.0 <i>Free Hanging Membrane</i>	VEN-TEX® 1.0 <i>Coated Shell Materials</i>	PU Coated <i>Shell Materials</i>
DWR Coated	DWR Coated	DWR Coated	DWR Coated	DWR Coated
VENTILATION				
VENTEC® <i>2-Way Core Vent</i>	VENTEC® <i>Front & Back Core Vents</i>	VENTEC® <i>Front & Back Core Vents</i>	VENTEC® <i>Underarm</i>	---
FEATURES				
• Fleece Lined Cuffs & Insulated Collar	• Fleece Lined Cuffs & Insulated Collar	• Fleece Lined Cuffs & Insulated Collar w/Chin Saver Placket	• Fleece Lined Cuffs & Insulated Collar	• Fleece Lined Cuffs & Insulated Collar
• Shock Cord Adjustable Hem (Dropback Design)	• Shock Cord Adjustable Hem (Dropback Design)	• Shock Cord Adjustable Collar & Hem (Dropback)	• Shock Cord Adjustable Hem (Dropback Design)	• Velcro® Adjustable Waist (Dropback Design)
• 3M™ Scotchlite™ Reflective	• 3M™ Scotchlite™ Reflective	• 3M™ Scotchlite™ Reflective	• 3M™ Scotchlite™ Reflective	• 3M™ Scotchlite™ Reflective
• Velcro® Adjustable Cuffs	• Velcro® Adjustable Cuffs	• Velcro® Adjustable Cuffs	• Velcro® Adjustable Cuffs	• Velcro® Adjustable Cuffs
• Critical Seams Sealed	• Critical Seams Sealed	• Critical Seams Sealed	---	---
• Lycra® hand gaiters	• Lycra® hand gaiters	• Lycra® hand gaiters	---	---
• Internal Powder Skirt	• Internal Powder Skirt	• Internal Powder Skirt	---	---
• Comfort-Flow™ Mesh Lined Shell	---	• Comfort-Flow™ Mesh Lined Shell	---	---
---	---	• Snap Secured Placket	---	---
---	---	---	---	---
• Spandex® Storage Pockets	---	• Spandex® Storage Pockets	---	---
---	---	---	---	---
1 YEAR WARRANTY	1 YEAR WARRANTY	3 YEAR WARRANTY	1 YEAR WARRANTY	1 YEAR WARRANTY
Sizes : SML-4XL	Sizes : SML-5XL	Sizes : SML-3XL	Sizes : SML-3XL	Sizes : SML-4XL

WOMEN'S JACKET COMPARISON CHART

CHARGE	BLISS	LAUNCH	BOLT	CHARM
SHELL MATERIAL				
Dobby Nylon	Soft-Touch Polyester	Dobby Nylon	Dobby Nylon	Dobby Nylon
SHELL INSULATION				
3M Thinsulate® Platinum 160g body/100g sleeve	3M Thinsulate® Extra Warmth 200g body/150g sleeve	3M Thinsulate® Extra Warmth 150g body/100g sleeve	3M Thinsulate® Extra Warmth 200g body/150g sleeve	ColdShield® 200g body/150g sleeve
REMOVABLE LINER				
3M Thinsulate® 60g	---	3M Thinsulate® 60g	---	---
WATERPROOFING				
VEN-TEX® 2.0 Laminated Membrane	VEN-TEX® 2.0 Laminated Membrane	VEN-TEX® 1.0 Coated Shell Materials	VEN-TEX® 1.0 Coated Shell Materials	PU Coated Shell Materials
DWR Coated	DWR Coated	DWR Coated	DWR Coated	DWR Coated
VENTILATION				
VENTEC® 2-Way Core Vent	VENTEC® Underarm	VENTEC® 2-Way Core Vent	VENTEC® Front & Back Core Vents	VENTEC® Underarm
FEATURES				
• Fleece Lined Cuffs & Insulated Collar w/Chin Saver Placket	• Fleece Lined Cuffs & Insulated Collar	• Fleece Lined Cuffs & Insulated Collar w/Chin Saver Placket	• Fleece Lined Cuffs & Insulated Collar	• Fleece Lined Cuffs & Insulated Collar
• Shock Cord Adjustable Collar & Zipper Hem	• Shock Cord & Zipper Adjustable Hip	• Shock Cord Adjustable Hem	• Shock Cord Adjustable Hem & Velcro® Hip	• Shock Cord Adjustable Hem & Velcro® Hip
• 3M Scotchlite™ Reflective	• 3M Scotchlite™ Reflective	• 3M Scotchlite™ Reflective	• 3M Scotchlite™ Reflective	• 3M Scotchlite™ Reflective
• Velcro® Adjustable Cuffs	• Velcro® Adjustable Cuffs	• Velcro® Adjustable Cuffs	• Velcro® Adjustable Cuffs	• Velcro® Adjustable Cuffs
• Critical Seam Sealed	• Critical Seam Sealed	• Critical Seam Sealed	• Critical Seam Sealed	---
• Lycra® hand gaiters	• Lycra® hand gaiters	• Lycra® hand gaiters	• Lycra® hand gaiters	---
---	---	• Internal Powder Skirt	---	---
• Comfort-Flow™ Mesh Lined Shell	---	• Comfort-Flow™ Mesh Lined Shell	---	---
• Magnetic Placket	• Magnetic Placket	---	---	---
• Integrated goggle wipe	---	---	---	---
• Spandex® Storage Pockets	---	• Spandex® Storage Pockets	---	---
• Removable adjustable hood	• Removable adjustable hood	---	---	---
1 YEAR WARRANTY	1 YEAR WARRANTY	1 YEAR WARRANTY	1 YEAR WARRANTY	1 YEAR WARRANTY
Sizes : XSM-2XL Plus Sizes 1W-4W	Sizes : XSM-2XL Plus Sizes 1W-4W	Sizes : XSM-2XL	Sizes : XSM-2XL Plus Sizes 1W-4W	Sizes : XSM-2XL



