

CHAIN TOOLS

Motion Pro Chain Breaking / Riveting Tool

722-8058

- Versatile enough to be used on cam chains or drive chains
- Will break chains from #35 to #530
- For chain #520 and up, it is recommended to grind the rivet head
- Each kit includes 3 pin sizes to fit most chains (2 mm, 3 mm, 4 mm)
- Investment-cast, hardened body and redesigned body bolt
- Recommended for light to medium-duty use
- For riveting hollow nose master link
- Kit includes press plates



Emgo Chain Breaking / Riveting Tool

E84-56410

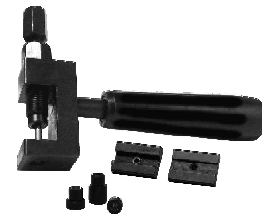
Emgo chain riveting tool kits have everything you need for installing riveting pins on cam or drive chains. These kits contain three pins for standard or O-ring style chains. Emgo chain riveting tool kits may also be used to remove pins on existing chains.



Chain Breaker/ Press Fit & Rivet Tool 230-4060

Quickly and easily breaks 40 & 50 type chain. Easily press-fits tight tolerance 40, 50 & 60 O-ring chain side plates to the correct depth for clip or rivet link installation. Flare's RK's special pin hole rivet links to the proper dimension to secure side plates in place. Works on most brands. Lifetime warranty on tool body and handle
A must for every serious mechanic's tool box!

Do not use tool to cut 630 and 632 type chains



Chain Breaker Tool with Folding Handle

- Fits 420 to 530 chain
- Will push link pin completely through link / side plate
- Handle folds away for easy storage
- Replaceable pin is heat treated for strength and wear resistance
- Max pin extension to drive out chain links is 18 mm. The maximum pin extension required to drive out the chain link is determined by measuring your chains width from outside face plate to outside face plate.

Will not work on EK 530 MVO/MVX

DESCRIPTION

Chain Breaker (420-530)

Chain Breaker Replacement Pin

PART

722-8001

722-8002



Chain Breaker Tool

230-5060

- Roller Chain Detacher Breaker Cutter for Motorcycle Bicycle Go Kart ATV Chains Replacement
- Fits 420 to 530 chain
- Heavy Duty
- High Carbon Steel, Compound Strengthening
- Extra pin included
- Cut chain into the length your need without any other tools easily



CHAIN TOOLS

Mini Chain Press Tool

722-8070

- Fits 520 and 530 standard and O-ring chains
- Designed to press side plates onto the master link
- A hex key wrench is also included with this tool.



Chain Press Clamp

722-8066

- Fits 520 and 530 standard and O-ring chains



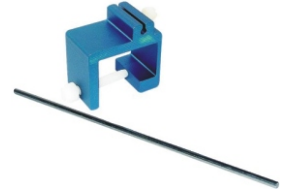
Press Plates for Press Clamp (above)

722-8067

Chain Alignment Tool

722-8048

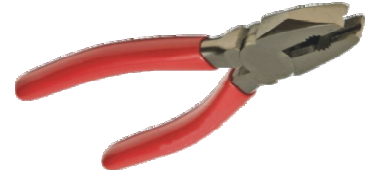
- This tool is used for quick and accurate alignment of the chain & sprockets.
- The tool body clamps to the rear sprocket while the alignment rod points toward the front sprocket, allowing for a visual sight line down length of the chain.



Master Link Pliers

722-8300

- Designed to simplify installation and removal of clip-type master links.
- 1 tip is shorter and notched to be placed on the pin while the other is longer to easily push the clip.



Chain Brush

Blue
Red

722-8305
722-8302

- Simple & effective way to clean dirty, gummed-up chains
- Innovative design cleans the chain from three angles at once
- The long bristles get into the harder to clean areas.

