



PREMIUM OUTDOOR ESSENTIALS



HMK SNOWMOBILE OUTFITTERS

2013 X 2014

TRANS CAN IMPORTS

Edmonton
8159 Wagner Road
Edmonton, Alberta
T6E 4N6

Phone 780 465-0126
Toll Free 800-661-9438
www.transcanimports.com



Material TECH



XR WEATHERPROOFING TECHNOLOGY EMPLOYS MICRO-POROUS COATINGS AND LAMINATIONS TO PRODUCE DURABLE, BREATHABLE, WATERPROOF FABRICS. THE THREE XR WEATHERPROOFING LEVELS ARE COMBINED WITH A VARIETY OF DURABLE SHELL FABRICS AND INSULATION SYSTEMS TO CREATE WEATHERPROOF BARRIERS AGAINST SEVERE WEATHER CONDITIONS AND TEMPERATURES.



GOLD

LAMINATES AN ADVANCED FILM TO THE FABRIC, CREATING A DURABLE, HIGHLY BREATHABLE AND EXTREMELY WATERPROOF SHIELD AGAINST EXTREME WINTER CONDITIONS AND VARYING WINTER TEMPERATURES.

- + Durable Waterproof laminated Microporous film
- + High water repellency and Windproof
- + Extremely breathable / vapor transmission



SILVER

PROVIDES EXCELLENT WATERPROOF/BREATHABLE PROTECTION FOR BLIZZARD-LIKE CONDITIONS

- + High level water repellent coating
- + High transmission of perspiration
- + Windproof



BRONZE

SOLID WEATHER PROTECTION AGAINST WINTER CONDITIONS AND COOL WEATHER.

- + Water and wind repellent
- + Breathable



Outerwear TECH



CORDURA® fabric provides rugged durable performance for a variety of end uses with exceptional strength-to-weight ratio. Products made with CORDURA® fabrics feature enhanced tear and abrasion resistance, and long-lasting durability. CORDURA® fabric is designed for living and built to last, bringing with it the heritage of the CORDURA® brand which has proven performance in many of the world's toughest environments for over thirty years.
+ www.cordura.com



Cascade Ballistic 400 is the fabric of choice for durability and resistance to abrasion, tearing, and scuffing. Packaged with our XR Weather Proofing Technology, our Cascade Ballistic fabric becomes a rugged shield against the elements.

Warranty INFORMATION

All HMK Outerwear is covered by a two year limited warranty. This limited warranty covers materials and/or workmanship found to be defective (as determined by the manufacturer) within 24 months from date of purchase. Products found to be defective will be repaired or replaced as determined by the manufacturer. For all warranty requests and questions contact HMK at (541) 386-3262. You must obtain a return authorization number for all warranties.



Standard JACKET FEATURES



Reflective Logo

Fleece lined collar & cuffs and interior pockets

Soft Poly Moisture Wicking Mesh Lining

Media Pocket

Taped Seams

XR Weatherproof Technology

Powder Skirt with snap to pant interface

Bottom Hem adjustable draw cord

Clear Window Pocket

Interior Goggle Pocket

Zipper Ventilation

Glove Friendly zipper pulls

Water Resistant YKK Zippers

D Ring

Standard PANT FEATURES



D Ring

Soft Poly Moisture Wicking Mesh Lining

Layered waterproof seat area

Glove friendly zipper pulls

Taped Seams

Snow Gaiter

Water Resistant YKK zippers

Abrasion resistant hem

Boot Cut

XR Weatherproof Technology

THE PEAK 2 JACKET



GOLD



\$374.95-H



5.

- XR-Gold Weatherproof Technology
- Wind proof/Waterproof/Breathable
- Cascade Ballistic 400 Nylon Oxford
- 3-in-1 Jacket with removable Destination mid-layer (see page 15)
- Waterproof Zippers
- Forearm Pocket
- Rear Panel Pocket
- Magnetic Flap Closure
- Detachable, Fully Articulated Hood
- Snap to Pant Interface



1.

2.

3.

4.

THE PEAK 2 PANT



2.

- XR-Gold Weatherproof Technology
- Wind proof/Waterproof/Breathable
- Cascade Ballistic 400 Nylon Oxford
- 3-in-1 Pant with removable Destination mid-layer (see page 15)
- Waterproof Zippers
- Adjustable/Removable Suspenders
- Thigh Ventilation



GOLD

\$329.95-H



5.

1.

3.

4.

Jackets		XS	SM	MD	LG	XL	2XL	3XL
1.	Blue	468-3830	468-3831	468-3832	468-3833	468-3834	468-3835	468-3836
2.	Green/Blue	468-3810	468-3811	468-3812	468-3813	468-3814	468-3815	468-3816
3.	Black	468-3840	468-3841	468-3842	468-3843	468-3844	468-3845	468-3846
4.	Blk/Org Checker	468-3820	468-3821	468-3822	468-3823	468-3824	468-3825	468-3826
5.	Red	468-3850	468-3851	468-3852	468-3853	468-3854	468-3855	468-3856
Pants		XS	SM	MD	LG	XL	2XL	3XL
1.	Blue	468-3860	468-3861	468-3862	468-3863	468-3864	468-3865	468-3866
2.	Green/Blue	468-3890	468-3891	468-3892	468-3893	468-3894	468-3895	468-3896
3.	Black	468-3880	468-3881	468-3882	468-3883	468-3884	468-3885	468-3886
4.	Blk/Org Checker	468-3870	468-3871	468-3872	468-3873	468-3874	468-3875	468-3876
5.	Red	468-3790	468-3791	468-3792	468-3793	468-3794	468-3795	468-3796



THE HUSTLER 2 JACKET

\$329.95-H



- XR-Gold Weatherproof Technology
- Wind proof/Waterproof/Breathable
- Cascade Ballistic 400 Nylon Oxford
- Aqua Guard Waterproof Zippers
- Forearm Pocket
- Magnetic Flap Closure
- Detachable, Fully Articulated Hood

Jackets	XS	SM	MD	LG	XL	2XL	3XL
1. Blue	468-3900	468-3901	468-3902	468-3903	468-3904	468-3905	468-3906
2. Black	468-3417	468-3418	438-3419	468-3420	468-3421	468-3422	468-3423
3. Orange	468-3410	468-3411	468-3412	468-3413	468-3414	468-3415	468-3416
4. Black/White	468-3424	468-3425	468-3426	468-3427	468-3428	468-3429	468-3430
Pants	XS	SM	MD	LG	XL	2XL	3XL
2. Black	468-3440	468-3441	468-3442	468-3443	468-3444	468-3445	468-3446
3. Orange	468-3493	468-3494	468-3495	468-3496	468-3497	468-3498	468-3499

THE HUSTLER 2 PANT

- XR-Gold Weatherproof Technology
- Wind proof/Waterproof/Breathable
- Cascade Ballistic 400 Nylon Oxford
- Aqua Guard Waterproof Zippers

\$259.95-H



THE MAVERICK JACKET



GOLD

1.



- XR-Gold Weatherproof Technology
- Wind proof/Waterproof/Breathable
- Heavy Duty Cordura Material
- 3-in-1 Jacket with removable Destination mid-layer (see page 15)
- Waterproof Zippers
- Forearm Pocket
- Reflective Trims

\$377.95-H

2.



THE MACKERICK BIB PANT

- XR-Gold Weatherproof Technology
- Wind proof/Waterproof/Breathable
- Heavy Duty Cordura Material
- 3-in-1 Pant with removable Destination mid-layer (see page 15)
- Full Bib with Adjustable Suspenders
- Reflective Patches
- Detachable, Fully Articulated Hood

\$330.95-H

3.



GOLD



Jackets	XS	SM	MD	LG	XL	2XL	3XL
1. Black/Orange	468-3950	468-3951	468-3952	468-3953	468-3954	468-3955	468-3956
2. Black	468-3970	468-3971	438-3972	468-3973	468-3974	468-3975	468-3976
3. Black/Camo	468-3960	468-3961	468-3962	468-3963	468-3964	468-3965	468-3966
Pants	XS	SM	MD	LG	XL	2XL	3XL
Bib Pant Black	468-3990	468-3991	468-3992	468-3993	468-3994	468-3995	468-3996





THE SUPERIOR TR JACKET

Standard Colors \$249.95-H
Rockstar Special Edition \$274.95-H

1.



- XR-Silver Weatherproof Technology
- Wind proof/Waterproof/Breathable
- Abrasion Resistant Cordura Panels
- Quilted Insulation
- Waterproof Zipper
- Chest Ventilation
- Powder Skirt
- Reflective Trims



SILVER



4.

5.

6.



2.

3.

	Jackets	XS	SM	MD	LG	XL	2XL	3XL
1.	Black/Orange	468-4020	468-4021	468-4022	468-4023	468-4024	468-4025	468-4026
2.	Black/Camo	468-4030	468-4031	468-4032	468-4033	468-4044	468-4045	468-4046
3.	Blue/Orange	468-4040	468-4041	468-4042	468-4043	468-4044	468-4045	468-4046
4.	Rockstar/Yellow	468-4050	468-4051	468-4052	468-4053	468-4054	468-4055	468-4056
5.	Rockstar/Red	468-4060	468-4061	468-4062	468-4063	468-4064	468-4065	468-4066
5.	Rockstar/Black	468-4070	468-4071	468-4072	468-4073	468-4074	468-4075	468-4076
	Pants	XS	SM	MD	LG	XL	2XL	3XL
	Black Pant	468-4010	468-4011	468-4012	468-4013	468-4014	468-4015	468-4016

THE SUPERIOR TR PANT

\$249.95-H

- XR-Silver Weatherproof Technology
- Wind proof/Waterproof/Breathable
- Abrasion Resistant Cordura Panels
- Quilted Insulation
- Adjustable Removable Suspenders
- Adjustable Waistband
- Waterproof Zippers



SIL



THE THROTTLE PULLOVER



1.

- XR-Silver Weatherproof Technology
- Wind proof/Waterproof/Breathable
- Heavy Duty Cordura Material
- Rear Panel Pocket
- Zippered Hand Pockets
- Full Length Side Zip Entry/Ventilation
- Race Specific Articulation

\$249.95-H



2.



3.



4.

THE THROTTLE PANT



1.

- XR-Silver Weatherproof Technology
- Wind proof/Waterproof/Breathable
- Heavy Duty Cordura Material
- Thigh Ventilation
- Zippered Cargo Pockets
- Race Specific Articulation

\$249.95-H



2.



3.



4.

	Jackets	XS	SM	MD	LG	XL	2XL	3XL
1.	Black/Orange	468-4100	468-4101	468-4102	468-4103	468-4104	468-4105	468-4106
2.	Blk/Org Checker	468-4110	468-4111	468-4112	468-4113	468-4114	468-4115	468-4116
3.	Black/White	468-4120	468-4121	468-4122	468-4123	468-4124	468-4125	468-4126
4.	Black	468-4130	468-4131	468-4132	468-4133	468-4134	468-4135	468-4136
	Pants	XS	SM	MD	LG	XL	2XL	3XL
1.	Black/Orange	468-4140	468-4141	468-4142	468-4143	468-4144	468-4145	468-4146
2.	Blk/Org Checker	468-4150	468-4151	468-4152	468-4153	468-4154	468-4155	468-4156
3.	Black/White	468-4160	468-4161	468-4162	468-4163	468-4164	468-4165	468-4166
4.	Black	468-4170	468-4171	468-4172	468-4173	468-4174	468-4175	468-4176



THE SPECIAL O.P.S./ ONE PIECE SUIT

Today's version of the vintage One Piece Suit. Built to protect you from the harshest environment, this full featured O.P.S. is ideal for guided tours, rental fleets, or in your own backyard.



- XR-Gold Weatherproof Technology
- Wind proof/Waterproof/Breathable
- Laminated Soft Shell Material
- AquaGuard Water Resistant Zippers
- Underarm Zipper Ventilation
- Detachable, Fully Articulated Hood
- Abrasion Resistant Inseam Cordura Panels

\$449.95-H



Jackets	XS	SM	MD	LG	XL	2XL	3XL
1. Black/Orange	468-4200	468-4201	468-4202	468-4203	468-4204	468-4205	468-4206
2. Blue/Red	468-4210	468-4211	468-4212	468-4213	468-4214	468-4215	468-4216
3. Orange	468-4220	468-4221	468-4222	468-4223	468-4224	468-4225	468-4226
4. Blue	468-4230	468-4231	468-4232	468-4233	468-4234	468-4235	468-4236
5. Black	468-3570	468-3571	468-3572	468-3573	468-3574	468-3575	468-3576

THE RANGER JACKET

\$159.95-H

Simple styling in the spirit of HMK heritage. Designed to provide comfort everyday. Wear it to preserve warmth before and after riding.

- XR-Bronze Weatherproof Technology
- Durable, light-weight Poly Ripstop Shell fabric with DWR (durable water repellent) finish
- Soft 10 oz premium insulation
- Brushed polyester lined collar
- Micro fleece-lined zippered hand warming pockets
- Chest zip is backed by a no-snag draft flap
- Internal Pocket plus Pit Zip Venting
- Removable brushed lined polyester hood with Internal Draw Cord
- Zippered chest pocket and Elastic wrist cuffs



Ranger Jacket	XS	SM	MD	LG	XL	2XL	3XL
	468-3600	468-3601	468-3602	468-3603	468-3604	468-3605	468-3606



THE TECH 2 JACKET

Wear it to ride, wear it to work. A great four season mid-weight jacket that is wind proof, waterproof and ventilated.



- XR-Silver Weatherproof Technology
- Breathable, Wind and Water resistant
 - 3 Layer Span Soft Shell Material
 - Zippered Chest and Hand Pockets
 - Under Arm Ventilation
 - Adjustable Bottom Hem

\$168.95-H



Tech 2 Jacket	XS	SM	MD	LG	XL	2XL	3XL
1. Tech 2 Jacket	468-3580	468-3581	468-3582	468-3583	468-3584	468-3585	468-3586
Tech 2 Hoody	XS	SM	MD	LG	XL	2XL	3XL
2. Black w/Orange	468-3314	468-3315	468-3316	468-3317	468-3318	468-3319	468-3320
3. Black w/Gray	468-3307	468-3307	468-3309	468-3310	468-3311	468-3312	468-3313
4. Rockstar	468-3690	468-3691	468-3692	468-3693	468-3694	468-3695	468-3696

THE TECH 2 HOODED SHELL

Ride, Layer, or live in this mid-weight triple layer, wind proof, water-resistant, fleece lined soft shell jacket!

- XR-Silver Weatherproof Technology
- Breathable, Wind and Water resistant
- 3 Layer Span Soft Shell Material
- Zippered Chest and Hand Pockets
- Adjustable Bottom Hem



Rockstar \$189.95-H
Standard Colors \$168.95-H

2.



3.



4.





WOMENS OUTERWEAR

HMK is proud to donate 10% of all HMK Women's apparel to the Pink Ribbon Riders to assist in the diagnose and treatment of breast cancer.

THE JEWEL JACKET

- XR-Silver Weatherproof Technology
- Wind proof/Waterproof/Breathable
- Abrasion Resistant Cordura Panels
- Quilted Insulation
- Powder Skirt

\$249.95-H



THE JEWEL PANT

\$249.95-H

- XR-Silver Weatherproof Technology
- Wind proof/Waterproof/Breathable
- Abrasion Resistant Cordura Panels
- Quilted Insulation



2.

3.



	Jackets	XS	SM	MD	LG	XL
1.	White/Black	468-3620	468-3621	468-3622	468-3623	468-3624
2.	Blue	468-3630	468-3631	468-3632	468-3633	468-3634
3.	Black	468-3640	468-3641	468-3642	468-3643	468-3644
	Pants	XS	SM	MD	LG	XL
1.	Blue	468-3635	468-3636	468-3637	468-3638	468-3639
2.	Black	468-3645	468-3646	468-3647	468-3648	468-3649

THE TECH 2 HOODED SHELL

\$168.95-H

Ride, Layer, or live in this mid-weight triple layer, wind proof, water-resistant, fleece lined soft shell jacket!

- XR-Silver Weatherproof Technology
- Breathable, Wind and Water resistant
- 3 Layer Span Soft Shell Material
- Zippered Chest and Hand Pockets
- Adjustable Bottom Hem



Tech 2 Hoody	XS	SM	MD	LG	XL
Black w/Pink Logo	468-3390	468-3391	468-3392	468-3393	468-3394

HMK BOOT TECH



Patented Sympatex Membrane: Intelligent And Effective

The secret of the high-tech Sympatex membrane is in its novel molecular structure. Unlike conventional micro-porous membranes, its structure is non-porous, because pores allow moisture to penetrate materials. Furthermore, detergent residues, dirt and salt crystals can clog pores and thus affect the durability of the membranes. The Sympatex membrane has a non-porous structure and is therefore 100% waterproof and 100% windproof. It consists instead of billions of hydrophilic (water loving) molecules that use a physiochemical process to quickly expel moisture. In other words, the Sympatex membrane offers optimal breathability and is extremely durable.

+ www.sympatex.com



Intuition Sports boot liners have come a long way since their start in 1991. Intuition liners are the premium boot liner in the market today. Intuition understands to be truly comfortable, the liners must fit properly. At Intuition Sports, they have designed the most comfortable boot liners in the world to meet the demands at all levels. All of their liners are made from 100% ULTRALON™ EVA foam - a proprietary foam developed exclusively for Intuition Sports and specifically designed to be moldable, flexible and durable for users at all skill levels. The liner is molded into a three dimensional shape conforming to the foot on its interior and the boot shell on its exterior surface. Intuition products are used by some of the best riders in the world, including extreme freeriders, National Snocross racers, professional instructors and back-country tour guides. These people virtually live in their boots all day so they demand the best performance and comfort possible from their equipment.

+ www.intuitionsports.com



Keep it Fresh Technology™ Products using the AEGIS technology are protected against odor, staining, and deterioration caused by bacteria, fungus, and other microorganisms. The AEGIS Microbe Shield technology is integrated into textile products at the manufacturer and lasts as long as the products themselves. Because AEGIS never leaves, it is always there providing the protection you expect, where you expect it to be. The unique technology is durable without the use of heavy metals and does not leach onto you or into our environment.

+ www.aegismicrobeshield.com



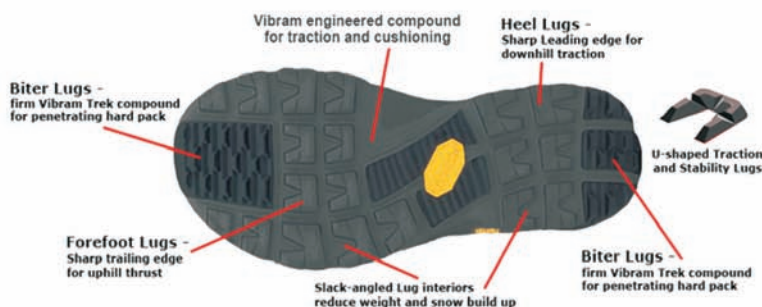
- + Glove Like Fit: Boa provides custom comfort with smooth, even closure and no pressure points.
- + Powerful Secure Closure: Once locked into place, Boa reels and laces stay that way.
- + Micro-Adjustability: Boa reels offer infinite degrees of fine tuning.
- + On-The-Fly: Get easy, one-handed adjustment even with gloves on.
- + Fast: Quick on. Quick off. Boa saves time when seconds count.
- + Lightweight: Boa Closures shed water, mud, and ice, shaving precious weight.
- + Boa Technologies guarantees the Boa Lacing Systems reel and laces for the lifetime of the product.

+ www.boatechnology.com



The Vibram brand is the worldwide leader in high performance soling products for outdoor, using rubber compounds with excellent traction and high abrasion resistance, that are lightweight, long-wearing and flexible.

+ www.vibram.us



The Grip Light sole was chosen to meet the needs of the HMK team riders. What did they ask for? Lightweight, traction throughout the backcountry and on the track, stability on the running boards, and cushion for hard landings.

HMK has partnered with Vibram, the company that invented the rubber lugged sole for mountain sports back in 1937. The Vibram Grip Light - exclusively on HMK in 2010-11!



Warranty INFORMATION

All HMK Boots are covered by a one year limited warranty. This limited warranty covers materials and/or workmanship found to be defective (as determined by the manufacturer) within 12 months from the date of purchase. Products found to be defective will be repaired or replaced as determined by the manufacturer. For all warranty requests and questions contact HMK at (541) 386-3262. You must obtain a return authorization number for all warranties.



THE TEAM FOCUS BOOT

\$435.95-G

Extraordinary fit, remarkable performance, and undeniable style surpass the demands of HMK's professional snocross racers and back country and freestyle riders of all levels.



- Water proof/Wind proof/Breathable
- Sympatex Water proof Breathable Membrane
- Intuition Closed Cell Foam Liner (Heat Moldable for Custom Fit)
- Removable Liner
- Increased Comfort and Support with Long Term Memory
- Comfort Rated to 40°C
- Ergonomic Comfort Cuff Relieves Pressure on the Calf
- Aggressive Lug Out-sole Offers excellent Traction and Stability
- Easy Grab Heel Pull
- True Fit Technology
- Full Grain Leather Upper
- Functional Flex for Comfort and Stability
- Pre-curved Tongue for Form Fit and Comfort
- Reinforced Toe Cap, Heel Counter, and Side Panels



THE
TEAM
BY HMK



Sizes/Colors	5	6	7	8	9	10	11	12	13	14	15
Blue/Grn/Wht	468-1685	468-1686	468-1687	468-1688	468-1689	468-1690	468-1691	468-1692	468-1693	468-1694	468-1695
White/Orange	468-1705	468-1706	468-1707	468-1708	468-1709	468-1710	468-1711	468-1712	468-1713	468-1714	468-1715
White	468-1596	468-1597	468-1598	468-1599	468-1600	468-1601	468-1602	468-1603	468-1604	468-1605	468-1606
Black	468-1585	468-1586	468-1587	468-1588	468-1589	468-1590	468-1591	468-1592	468-1593	468-1594	468-1595



THE TEAM BOA BOOT



- Water proof/Wind proof/Breathable
- Sympatex Water proof Breathable Membrane
- Intuition Closed Cell Foam Liner (Heat Moldable for Custom Fit)
- Removable Liner
- Increased Comfort and Support with Long Term Memory
- Comfort Rated to 40°C
- Ergonomic Comfort Cuff Relieves Pressure on the Calf
- Aggressive Lug Out-sole Offers excellent Traction and Stability
- Easy Grab Heel Pull
- True Fit Technology
- Full Grain Leather Upper
- Functional Flex for Comfort and Stability
- Pre-curved Tongue for Form Fit and Comfort
- Reinforced Toe Cap, Heel Counter, and Side Panels

\$379.95-G



Sizes/Colors	5	6	7	8	9	10	11	12	13	14	15
Boa White	468-1631	468-1632	468-1633	468-1634	468-1635	468-1636	468-1637	468-1638	468-1639	468-1640	468-1641
Boa Black	468-1620	468-1621	468-1622	468-1623	468-1624	468-1625	468-1626	468-1627	468-1628	468-1629	468-1630



THE TEAM LACE BOOT

\$319.95-G



Sizes/Colors	5	6	7	8	9	10	11	12	13	14	15
White Lace	468-1665	468-1666	468-1667	468-1668	468-1669	468-1670	468-1671	468-1672	468-1673	468-1674	468-1675
Black Lace	468-1645	468-1646	468-1647	468-1648	468-1649	468-1650	468-1651	468-1652	468-1653	468-1654	468-1655



THE VOYAGER BOOT-MENS

Boa \$289.95-G
Lace \$219.95-G



- Water proof/Wind proof/Breathable
- Sympatex Water proof Breathable Membrane
- Intuition Closed Cell Foam Insulation
- Impervious to Water and Wind
- 10 to 1 heat retention factor
- Increased Comfort and Support with Long Term Memory
- Aggressive Lug Out-sole offers Excellent Traction and Stability
- Ergonomic Comfort Cuff Relieves Pressure on the Calf
- Aegis Microbe Shield plus Keep It Fresh Technology
- Easy Grab Heel Pull
- Comfort Rated to -40°C
- Tapered Toe Profile
- Full Grain Leather Upper



Sizes/Colors	5	6	7	8	9	10	11	12	13	14	15	16	17
VOYAGER BOA													
Orange	468-1405	468-1406	468-1407	468-1408	468-1409	468-1410	468-1411	468-1412	468-1413	468-1414	468-1415	468-1416	468-1417
Black	468-1505	468-1506	468-1507	468-1508	468-1509	468-1510	468-1511	468-1512	468-1513	468-1514	468-1515	468-1516	468-1517
VOYAGER LACE													
Black	468-1478	468-1479	468-1480	468-1481	468-1482	468-1483	468-1484	468-1485	468-1486	468-1487	468-1488	468-1489	468-1490

THE VOYAGER LACE BOOT-LADIES

Boa \$289.95-G
Lace \$219.95-G



Sizes/Colors	5	6	7	8	9	10	11
VOYAGER BOA							
Black	468-1551	468-1552	468-1553	468-1554	468-1555	468-1556	468-1557
VOYAGER LACE							
Black	468-1558	468-1559	468-1560	468-1561	468-1562	468-1563	468-1564



LAYERING

The Destination Midlayer

- 250 gm Moisture Wicking Polyester
- Smooth Exterior for Easy Layering
- Soft Brushed Interior for Added Comfort
- Anti-Microbial Odor Guard
- Zippered Media Pocket - Top Only
- Zippered Hand Pockets (Both Top and Bottom)

Jacket \$79.95-H
Pant \$69.95-H



	SM	MD	LG	XL	2XL	3XL
Jacket	468-0041	468-0042	468-0043	468-0044	468-0045	468-0046
Pant	468-0051	468-0052	468-0053	468-0054	468-0055	468-0056

The Transfer Base Layer

- ec2 Qwik-Dri Moisture Wicking Technology
- Soft Next-to-Skin Feel
- Anti-Microbial Odor Guard
- Soft Chafe Free Waistband or Collar Rib



Jacket \$35.95-H
Pant \$35.95-H

Mens	SM	MD	LG	XL	2XL	3XL
Top	468-0026	468-0027	468-0028	468-0029	468-0030	468-0031
Bottom	468-0034	468-0035	468-0036	468-0037	468-0038	468-0039
Ladies	SM	MD	LG	XL		
Top	468-0061	468-0062	468-0063	468-0064		
Bottom	468-0065	468-0066	468-0067	468-0068		





LAYERING / GLOVES

The Exposure Balaclava

- Microflex Fleece
- Hinged for Maximum Comfort
- Added Face and Neck Protection via Wind Blocking Inserts
- Lyca Binding Around the Face Seals out the Elements
- Mesh Breathing Panel
- Moisture Wicking
- Lightweight
- S/M or L/XL Sizing

\$34.95-H

S/M	475-0001
L/XL	475-0002



The Summit Thermal Sock

The HMK Summit snowmobile sock is produced using Dri-Release® wool that combines cold weather warmth and comfort with moisture wicking properties on a whole new level. Comes with Freshguard® to prevent odor and additional padding for comfort and tension bands for extra hold.

SM	468-1070
MD	468-1071
LG	468-1072
XL	468-1073

\$28.95-H



The Fusion Glove **\$29.95-H**

- Low Profile, Form Fitted
- Strategically Placed Silicone for Increased Grip
- 4-way Stretch Fleece for Ultimate Comfort and Warmth

XS/S	468-2000
M/L	468-2001
XL/2XL	468-2002



GLOVES



The Ridge Glove

\$117.95-H

- Hipora Waterproof, Breathable Insert
- Pre-curved Finger Construction for Better Dexterity and Fit
- Cyberian One Handed Ease of Entry and Exit Cord Lock
- Premium Leather Palm with Overlays for Increased Strength
- Added Articulation Points Across Knuckles and High Flex Zones
- 207 gm Fleece Palm Lining with 140 gm Microbemberg on the Back of the Hand for All Day Comfort

SM	468-2003
MD	468-2004
LG	468-2005
XL	468-2006
2XL	468-2007



The Pro Glove

\$52.95-H

- Wind proof Corded Nylon Back of Hand for added Comfort and Durability
- Abrasion Resistant Synthetic Suede Palm
- Reinforced Palm Patches and Finger Tips
- Slip On Cuff for Ease and Comfort
- TPR Overlays for Increase Knuckle Protection

SM	468-2071
MD	468-2072
LG	468-2073
XL	468-2074
2XL	468-2075

The Union Glove

Union Glove \$87.95-H Union Long \$105.95-H

- Pre-curved Finger Construction for Increased Dexterity and Comfort
- Neoprene Under Cuff for Added Comfort and Improved Glove to Wrist Interface
- Hipora Water proof, Breathable Insert
- Kevlar Palm for Ultimate Durability
- Adjustable Wrist Closure for Custom Fit
- Palm Overlays for Increased Strength

- Strategically Patterned for Ultimate Fit
- Back of Thumb Nose Wipe
- Black Union Glove Long Features Long Gauntlet



Color	XS	SM	MD	LG	XL	2XL	3XL
Black	468-2040	468-2041	468-2042	468-2043	468-2044	468-2045	468-2046
Red	468-2050	468-2051	468-2052	468-2053	468-2054	468-2055	468-2056
White	468-2060	468-2061	468-2062	468-2063	468-2064	468-2065	468-2066
Gry/Org	468-2080	468-2081	468-2082	468-2083	468-2084	468-2085	468-2086
Union Long	468-2090	468-2091	468-2092	468-2093	468-2094	468-2095	468-2096

Union Glove Long



PACKS

The Backcountry Pack *\$99.95-H*

- Total Capacity - 1200 cubic inches
- Heavy Duty Rip Stop & Ballistic Nylon
- Adjustable Sternum Strap & Waist Belt for Added Support & Comfort
- Padded Shoulder Straps, Padded Shoulder Blade and Lumber Area
- Rugged Scuff Resistant Bottom
- Organizer Pocket with Key Clip, Music Pocket with Cord Port
- External Shovel Blade Pocket with Draining mesh
- Internal Hydration Pocket with Hose Port
- Vertical Board Carrier

Color	Black	Blk/Snow Camo	Blk/Red	Blk/Org	Blk/Blue	Blk/Green
Back Country	468-1298	468-1297	468-1295	468-1301	468-1315	468-1316



The Recon Pack *\$134.95-H*

- Total Capacity - 1300 cubic inches
- Heavy Duty Rip Stop & Ballistic Nylon
- Adjustable Sternum Strap & Waist Belt for Added Support & Comfort
- Padded Shoulder Straps, Padded Shoulder Blade and Lumber Area
- Individual Compartments for Shovel, Probe & Hydration
- Compatible with Both the HMK Shor-T & L-Handle Shovels
- Loaded Compression Straps
- Rugged Scuff Resistant Bottom
- Multiple Internal Organizer Pockets
- Soft Poly Lined Goggle Pocket
- Single Zippered Hip Pockets
- Glove Friendly Zipper Pulls

Black	468-1311
-------	----------

The Summit Pack *\$159.95-H*

- Total Capacity - 1600 cubic inches
- Heavy Duty Rip Stop & Ballistic Nylon
- Adjustable Sternum Strap & Waist Belt for Added Support & Comfort
- Padded Shoulder Straps, Padded Shoulder Blade and Lumber Area
- Individual Compartments for Shovel, Probe & Hydration
- Compatible with Both the HMK Shor-T & L-Handle Shovels
- Loaded Compression Straps
- Rugged Scuff Resistant Bottom
- Multiple Internal Organizer Pockets
- Soft Poly Lined Goggle Pocket
- Dual Zippered Hip Pockets
- Glove Friendly Zipper Pulls

Black	468-1309
Orange	468-1312



ACCESSORIES



The Hydration Reservoir

\$40.95-H

- 100 oz (3 L) Capacity
- Compatible with all HMK Packs
- Wide Mouth Opening for Easy Cleaning
- Non-Stick Tubing Resists Bacteria
- Insulated Drink Tube and Bite Valve Cover
- Quick Draw Hose Fastener
- Easy-Flo Shut-off Valve

Hydration	468-1302
-----------	----------

The Shor-T Shovel

\$44.95-H

- Forged Aluminum Shaft & Blade
- Telescoping Shaft
- Adjustable from 25 - 32"
- Lightweight Design
- Compatible with all HMK Packs

Shor-T Shovel	468-1310
---------------	----------



The 2.7 M Probe

\$74.95-H

- 270 cm Avalanche Probe
- Lightweight Aluminum Sectional Construction
- Depth Indicators
- Braided Stainless Cable for Durability (rubber coated)
- Nylon Storage Bag with D-Ring
- Compatible with all HMK Packs

Probe	468-1304
-------	----------



The L Handle Shovel w/Saw

\$79.95-H

- Forged Aluminum Shaft & Blade
- Telescoping Shaft
- Adjustable from 31-42"
- Lightweight Design
- Durable Cross Cut Saw in Shaft
- Compatible with all HMK Packs

Black w/ Black Blade	468-1308
Black w/ White Blade	468-1294
Black w/ Orange Blade	468-1303
Black w/ Pink Blade	468-1306

The HMK Whistle

\$4.95-H

Whistle	468-1307
---------	----------



Trans Can Imports
8151 Wagner Road. Edmonton. AB
www.transcanimports.com
800-661-9438



Ride 'til it Melts