

## ATV X-STREAM POWERLIDS



The ATV X-Stream Powerlid incorporates a K&N High-Flow-Air Filter with an air box lid that is designed to replace potentially restrictive stock air box lids and intake snorkels. Each XStream Powerlid includes a K&N DryCharger and the necessary carburetor jets to properly tune your ATV. For maximum airflow and filtration, use the Powerlid with a K&N OE replacement air filter.

- For ATV Filter and Powerlid Applications see pages 37 thru to 44



Pre-Charger



Dry-Charger

### K&N Pre-Charger

- Specially designed filter wrap made to extend the service interval of your K&N Filter Charger when used in very dusty conditions.
- Made from durable polyester material containing uniform micron openings
- For K&N Pre-Charger Applications see pages 12 thru to 44

### K&N Dry Charger

Specifically designed to prevent splashes of water or mud from saturating your K & N Air Filter.

Dry Chargers are water repellent NOT waterproof.

- Made from a durable polyester material that is pre-treated with a proprietary hydrophobic process.
- For K&N Dry-Charger Applications see pages 12 thru to 44



## K & N UNIVERSAL AIR FILTERS - UNIQUE



### RU-2952 Filter with Dual Oval Mounting Flanges

- Sold in 2-packs
- 2 3/16" x 2 7/8" flanges, 5" x 6" rectangle base, 3 1/4" x 4 1/4" rubber oval top, 4" filter height, 11/16" flange length, 3 1/8" c-c spacing
- See page for applications

## K & N UNIVERSAL AIR FILTER- FOR MODIFIED MINIBIKES



- The original high-flow air filter
- Designed to increase horsepower & acceleration
- Washable & reusable
- Large filtration area provides longer service intervals & optimum airflow



Description	Mounting		Base Diameter	Top Diameter	Filter Length	Flange Length	Flange Type	Flange Angle/Offset	TCI Part #					
	Inside													
<b>Honda CRF50</b>	inch	mm	inch	mm	inch	mm	in	mm						
16mm Stock	1 1/8	29	2 1/4	57	2	51	3	64	5/8	16	Centered	Offset	580-RC2540	
18mm	1 3/8	35	2 1/2	64	2	51	2	64	5/8	16	Centered	Offset	580-RC0790	
20mm	1 3/8	35	2 1/2	64	2	51	2	57	5/8	16	Centered	Offset	580-RC0790	
<b>Kawasaki KLX 110</b>														
28mm	1 3/4	44	4 1/2	114	4 1/2	114	2	38	5/8	14	Offset	Offset	580RC0330	

## K & N UNIVERSAL AIR FILTERS - ROUND STRAIGHT

When selecting one of K&N's universal round straight air filters, you should consider the following dimensions as they relate to the specification chart below.

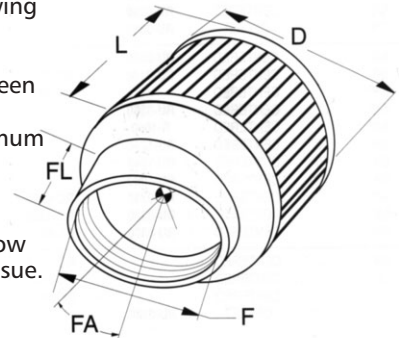
**(F) Mounting Flange I.D.** - This is the most critical dimension and should be very close to the diameter of the application's inlet flange. The flange will stretch up to 1/16" for those in-between sizes.

**(D) Filter Diameter** - Overall diameter of the filter. Use the largest diameter practical for maximum filtration.

**(L) Filter Length** - Length of the filter body only. Does not include the flange length. Use the longest filter practical for maximum filtration.

**(FA/FL) Flange Angle and/or Flange Length** - If no angle is listed in the specifications table below then the flange is straight. Angles are listed in degrees and can be utilized when space is an issue.

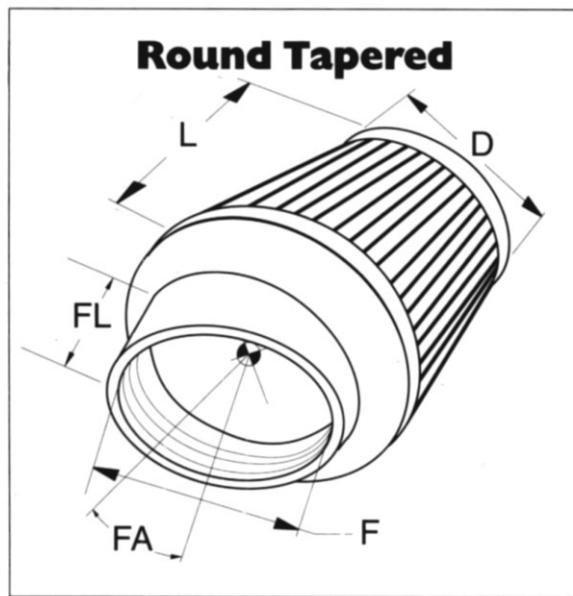
**(FO) Flange Offset** - Center of the flange is offset from the center of the filter base in order to provide a better fit.



Tci Part #	Flange Inside Dia. (F)	Outside Dia. (D)	Length (L)	Top Style	Flange Length (FL)	Flange Angle (FA)	Flange Offset
580-RU3230	0.625" (16mm)	1.375" (35mm)	1.125" (29mm)	Rubber	0.375" (10mm)	0°	0" (0mm)
580-RU0160	1.5" (38mm)	3" (76mm)	4" (102mm)	Rubber	0.625" (16mm)	0°	0" (0mm)
580-RC0844	1.562" (40mm)	3" (76mm)	2" (51mm)	Metal	0.625" (16mm)	0°	0" (0mm)
580-RC0874	1.562" (40mm)	3" (76mm)	3" (76mm)	Metal	0.625" (16mm)	0°	0" (0mm)
580-RC0880	1.562" (40mm)	3" (76mm)	2.25" (57mm)	Metal	0.625" (16mm)	0°	0" (0mm)
580-RC0884	1.562" (40mm)	3" (76mm)	2.25" (57mm)	Metal	0.625" (16mm)	0°	0" (0mm)
580-RC0870	1.563" (40mm)	3" (76mm)	3" (76mm)	Metal	0.625" (16mm)	0°	0" (0mm)
580-RC1120	1.688" (43mm)	3" (76mm)	3" (76mm)	Metal	0.625" (16mm)	0°	0" (0mm)
580-RC1130	1.688" (43mm)	3" (76mm)	2.5" (64mm)	Metal	0.625" (16mm)	0°	0" (0mm)
580-RU0200	1.688" (43mm)	3" (76mm)	4" (102mm)	Rubber	0.625" (16mm)	0°	0" (0mm)
580-RU0210	1.688" (43mm)	3" (76mm)	5" (127mm)	Rubber	0.625" (16mm)	0°	0" (0mm)
580-RC0330	1.75" (44mm)	4.5" (114mm)	1.5" (38mm)	Metal	0.625" (16mm)	0°	0.563" (14mm)
580-RC0340	1.75" (44mm)	4.5" (114mm)	1.5" (38mm)	Metal	0.625" (16mm)	0°	0" (0mm)
580-RU0370	1.75" (44mm)	4.5" (114mm)	2" (51mm)	Rubber	0.625" (16mm)	0°	0" (0mm)
580-RU2570	1.75" (44mm)	3" (76mm)	2" (51mm)	Rubber	0.625" (16mm)	0°	0" (0mm)
580-RC0910	1.813" (46mm)	3" (76mm)	2.25" (57mm)	Metal	0.625" (16mm)	0°	0" (0mm)
580-RC0890	1.813" (46mm)	3" (76mm)	3" (76mm)	Metal	0.625" (16mm)	0°	0" (0mm)
580-RC0410	1.875" (48mm)	3" (76mm)	5" (127mm)	Metal	0.625" (16mm)	0°	0" (0mm)
580-RU1400	1.938" (49mm)	3.5" (89mm)	4" (102mm)	Rubber	2" (51mm)	20°	0" (0mm)
580-RU1420	1.938" (49mm)	3.5" (89mm)	6" (152mm)	Rubber	2" (51mm)	20°	0" (0mm)
580-RU0510	2.063" (52mm)	3.5" (89mm)	5" (127mm)	Rubber	0.625" (16mm)	0	0" (0mm)
580-RU1060	2.063" (52mm)	3.5" (89mm)	5" (127mm)	Rubber	0.75" (19mm)	10°	0" (0mm)
580-RU1780	2.063" (52mm)	3.5" (89mm)	5" (127mm)	Rubber	2.5" (64mm)	17°	0" (0mm)
580-RC1910	2.125" (54mm)	3" (76mm)	3" (76mm)	Metal	0.625" (16mm)	0°	0" (0mm)
265-BD6506	2.25" (57mm)	5.5" (140mm)	5" (127mm)	Rubber			
580-RC0650.so	2.25" (57mm)	5.5" (140mm)	2.5" (64mm)	Metal	0.625" (16mm)	0°	0.813" (21mm)
580-RC2880	2.25" (57mm)	3.5" (89mm)	1.5" (38mm)	Metal	0.625" (16mm)	0°	0" (0mm)
580-RU1080	2.25" (57mm)	3.5" (89mm)	5" (127mm)	Rubber	0.75" (19mm)	10°	0" (0mm)
580-RU1710	2.25" (57mm)	3.5" (89mm)	5" (127mm)	Rubber	1" (25mm)	20°	0" (0mm)
580-RC0850	2.438" (62mm)	5" (127mm)	2" (51mm)	Metal	0.625" (16mm)	0°	0" (0mm)
580-RU0810	2.438" (62mm)	3.5" (89mm)	5" (127mm)	Rubber	0.625" (16mm)	0°	0" (0mm)
580-RU0820	2.438" (62mm)	3.5" (89mm)	6" (152mm)	Rubber	0.625" (16mm)	0°	0" (0mm)
580-RU1750	2.438" (62mm)	3.75" (95mm)	4" (102mm)	Rubber	2" (51mm)	20°	0" (0mm)
580-RU1760	2.438" (62mm)	3.75" (95mm)	5" (127mm)	Rubber	2" (51mm)	20°	0" (0mm)
580-RU1770	2.438" (62mm)	3.75" (95mm)	6" (152mm)	Rubber	2" (51mm)	20°	0" (0mm)
580-RD0700	2.5" (64mm)	3.5" (89mm)	4" (102mm)	Rubber	0.625" (16mm)	0°	0" (0mm)
580-RU0900	2.688" (68mm)	4.5" (114mm)	4" (102mm)	Rubber	0.625" (16mm)	0°	0" (0mm)
580-RU0910	2.688" (68mm)	4.5" (114mm)	5" (127mm)	Rubber	0.625" (16mm)	0°	0" (0mm)
580-RU1470*	2.75" (70mm)	4" (102mm)	6" (152mm)	Rubber	1" (25mm)	10°	0" (0mm)
580-RU3190	2.75" (70mm)	4" (102mm)	6" (152mm)	Rubber	2" (51mm)	20°	0" (0mm)
580-RU1620	2.875" (73mm)	4" (102mm)	6" (152mm)	Rubber	0.625" (16mm)	0°	0" (0mm)
580-RB0900.so	3" (76mm)	4.5" (114mm)	4" (102mm)	Rubber	1" (25mm)	5°	0" (0mm)
580-RB0910	3" (76mm)	4.5" (114mm)	5" (127mm)	Rubber	1" (25mm)	5°	0" (0mm)

\*K&N Pre Charger Filter Wrap is available for this item 580-RU1470PK

## K & N UNIVERSAL AIR FILTERS - ROUND TAPERED (CONE)



### K&N Universal Round Tapered Air Filters

When selecting one of K&N's universal round tapered air filters, you should consider the following dimensions as they relate to the specification chart:

**(F) Mounting Flange Inside Diameter** — This is the most critical dimension and should be very close to the diameter of the application's inlet flange. The flange will stretch up to 1/16" for those in-between sizes.

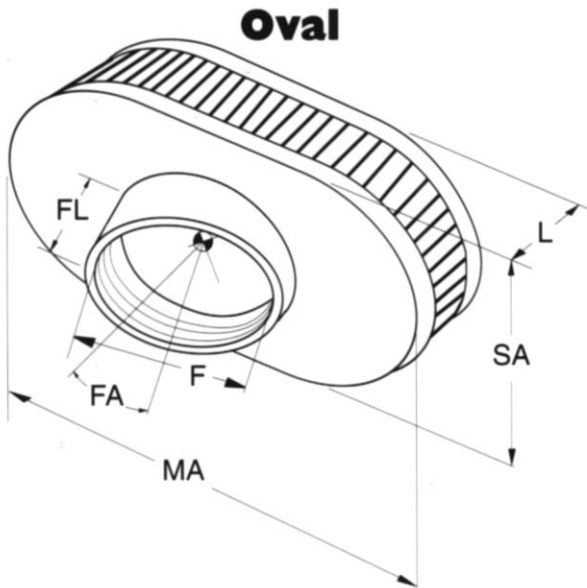
**(D) Filter Diameter** — This is the outside diameter of the filter. The top size is listed first, then the base size. Always use the largest size filter that is practical for the application.

**(L) Filter Length** — This dimension is the vertical length of the filter body only, it does not include the length of the flange, nor does it take into account the taper of the filter media. Always use the longest filter practical, for maximum filtration.

**(FA / FL) Flange Angle and/or Length** — If no angle is listed in the specifications table, the flange is straight. Any angle listed is in degrees and can be utilized when space is a problem.

TCI Part #	Flange Inside Dia. (F)	Base Outside Dia.	Top Outside Dia.	Length (L)	Top Style	Flange Length (FL)	Flange Angle (FA)	Flange Offset
580-RC2540	1.125" (29mm)	2.25" (57mm)	2" (51mm)	2.5" (64mm)	Metal	0.625" (16mm)	0°	0" (0mm)
580-RC0790	1.375" (35mm)	2.5" (64mm)	2" (51mm)	2.25" (57mm)	Metal	0.625" (16mm)	0°	0" (0mm)
580-RC0794	1.375" (35mm)	2.5" (64mm)	2" (51mm)	2.25" (57mm)	Metal	0.625" (16mm)	0°	0" (0mm)
580-RC2294	1.562" (40mm)	2.62" (67mm)	2" (51mm)	3" (76mm)	Metal	0.625" (16mm)	0°	0" (0mm)
580-RC2314	1.562" (40mm)	3" (76mm)	2" (51mm)	3" (76mm)	Metal	0.625" (16mm)	0°	0" (0mm)
580-RC2290	1.563" (40mm)	2.625" (67mm)	2" (51mm)	3" (76mm)	Metal	0.625" (16mm)	0°	0" (0mm)
580-RC1072	1.687" (43mm)	3" (76mm)	2" (51mm)	2.75" (70mm)	Metal	0.625" (16mm)	0°	0" (0mm)
580-R1100	1.688" (43mm)	3" (76mm)	2" (51mm)	4" (102mm)	Rubber	1.5" (38mm)	40°	0" (0mm)
580-RC1070	1.688" (43mm)	3" (76mm)	2" (51mm)	2.75" (70mm)	Metal	0.625" (16mm)	0°	0" (0mm)
580-RU2690	1.75" (44mm)	3" (76mm)	2" (51mm)	2.5" (64mm)	Rubber	0.625" (16mm)	0°	0" (0mm)
580-RC2324	1.812" (46mm)	3" (76mm)	2" (51mm)	3" (76mm)	Metal	0.625" (16mm)	0°	0" (0mm)
580-RC2320	1.813" (46mm)	3" (76mm)	2" (51mm)	3" (76mm)	Metal	0.625" (16mm)	0°	0" (0mm)
580-R1090	1.875" (48mm)	3" (76mm)	2" (51mm)	3" (76mm)	Rubber	0.625" (16mm)	0°	0" (0mm)
580-RC1290	1.875" (48mm)	3" (76mm)	2" (51mm)	3.688" (94mm)	Metal	1" (25mm)	10°	0" (0mm)
580-RC1064	1.937" (49mm)	3" (76mm)	2" (51mm)	3" (76mm)	Metal	0.625" (16mm)	0°	0" (0mm)
580-R1060	1.938" (49mm)	3" (76mm)	2" (51mm)	3" (76mm)	Rubber	0.625" (16mm)	0°	0" (0mm)
580-RC1060	1.938" (49mm)	3" (76mm)	2" (51mm)	3" (76mm)	Metal	0.625" (16mm)	0°	0" (0mm)
580-RC2580	2" (51mm)	3.125" (79mm)	2" (51mm)	3" (76mm)	Metal	0.625" (16mm)	0°	0" (0mm)
580-RC1352	2.063" (52mm)	3.25" (83mm)	3" (76mm)	4" (102mm)	Metal	0.625" (16mm)	0°	0" (0mm)
580-RC2340	2.125" (54mm)	3" (76mm)	2" (51mm)	2.75" (70mm)	Metal	0.625" (16mm)	0°	0" (0mm)
580-RC2344	2.125" (54mm)	3" (76mm)	2" (51mm)	2.75" (70mm)	Metal	0.625" (16mm)	0°	0" (0mm)
580-R1260	2.25" (57mm)	3.5" (89mm)	2" (51mm)	4" (102mm)	Rubber	0.625" (16mm)	0°	0" (0mm)
580-R1380	2.438" (62mm)	5.5" (140mm)	4.5" (114mm)	4" (102mm)	Rubber	0.625" (16mm)	0°	0.5" (13mm)
580-RX3770	2.438" (62mm)	4.5" (114mm)	6" (152mm)	6.125" (156mm)	X-Stream	3" (76mm)	20°	0" (0mm)
580-RX3800	2.438" (62mm)	4.5" (114mm)	4" (102mm)	6.125" (156mm)	X-Stream	3" (76mm)	20°	0" (0mm)
580-RX3810	2.438" (62mm)	4.5" (114mm)	6" (152mm)	6.125" (156mm)	X-Stream	0.875" (22mm)	0°	0" (0mm)
580-RX3820	2.438" (62mm)	4.5" (114mm)	4" (102mm)	6.125" (156mm)	X-Stream	0.875" (22mm)	0°	2" (51mm)
265-AC4096	2.688" (68mm)	4.5" (114mm)	3.5" (89mm)	4" (102mm)	Rubber	0.625" (16mm)	0°	0" (0mm)
580-RU3120	2.75" (70mm)	4" (102mm)	2" (51mm)	6" (152mm)	Rubber	1" (25mm)	10°	0" (0mm)
580-RE-0920	3.5" (89mm)	6" (152mm)	4.625" (117mm)	9" (229mm)	Rubber	1.75" (44mm)	0°	0" (0mm)
580-RU2790	3.5" (89mm)	4.625" (117mm)	3.5" (89mm)	4.5" (114mm)	Rubber	0.625" (16mm)	0°	0" (0mm)
580-RE-0870	4" (102mm)	6" (152mm)	4.625" (117mm)	9" (229mm)	Rubber	1.75" (44mm)	0°	0" (0mm)

## K & N UNIVERSAL AIR FILTERS - OVAL STRAIGHT



### K&N Universal Oval Air Filters

When selecting one of K&N's universal oval air filters, you should consider the following dimensions as they relate to the specification chart:

**(F) Mounting Flange Inside Diameter** — This is the most critical dimension and should be very close to the diameter of the application's inlet flanges. The flanges will stretch up to 1/16" for those in-between sizes.

**(MA / SA) Filter Oval Dimensions** — This is the length and width of the filter. Always use the largest filter practical to fit the application.

**(L) Filter Length** — This dimension is the length of the filter body only, it does not include the flange length. Always use the longest filter practical, for maximum filtration.

**(FA / FL) Flange Angle and/or Length** — If no angle is listed in the specifications table, the flange is straight. Any angle listed is in degrees and can be utilized when space is a problem.

TCI Part #	Flange Inside Dia. (F)	Outside Dim. (MA)	Outside Dim. (SA)	Top Length (L)	Style	Flange Length (FL)	Flange Angle (FA)	Flange Offset
580-R0640	1.5" 38mm	4.5" 114mm	3.75" 95mm	2.75" 70mm	Rubber	1" 25mm	30°	0" (0mm)
580-R0642	1.5" 38mm	4.5" 114mm	3.5" 89mm	2.75" 70mm	Rubber	1" 25mm	30°	0" (0mm)
580-RU0990	2.25" 57mm	4.5" 114mm	3.75" 95mm	4" 102mm	Rubber	0.625" 16mm	0°	0" (0mm)
580-RU1180	2.438" 62mm	4.5" 114mm	3.75" 95mm	5" 127mm	Rubber	0.625" 16mm	0°	0" (0mm)
580-RU1220	2.438" 62mm	4.5" 114mm	3.75" 95mm	5" 127mm	Rubber	1" 25mm	10°	0" (0mm)
580-RU1260	2.438" 62mm	4.5" 114mm	3.75" 95mm	9" 229mm	Rubber	1" 25mm	10°	0" (0mm)
580-RU1370	2.438" 62mm	4.5" 114mm	3.75" 95mm	5" 127mm	Rubber	1.25" 32mm	20°	0" (0mm)
580-RU1371	2.438" 62mm	4.5" 114mm	3.75" 95mm	5" 127mm	Rubber	1.25" 32mm	20°	0" (0mm)
580-RU1380	2.438" 62mm	4.5" 114mm	3.75" 95mm	6" 152mm	Rubber	1.25" 32mm	20°	0" (0mm)
580-RU1810	2.438" 62mm	4.5" 114mm	3.75" 95mm	7" 178mm	Rubber	0.625" 16mm	0°	0" (0mm)
580-RU1830	2.5" 64mm	4.5" 114mm	3.75" 95mm	7" 178mm	Rubber	2.125" 54mm	10°	0" (0mm)
580-RC2000	2.75" 70mm	7" 178mm	4.5" 114mm	2" 51mm	Metal	0.625" 16mm	0°	0" (0mm)



## K & N UNIVERSAL AIR FILTERS - OVAL TAPERED

TCI Part #	Flange Inside		Base Outside		Top Outside		Top Style	Flange Length (FL)	Flange Angle (FA)	Flange Offset
	Dia. (F)	Length (L)	Dim. (MA)	Dim. (SA)	Dim. (MA)	Dim. (SA)				
580-RC2450	1.75" 44mm	2.75" 70mm	4" 102mm	3" 76mm	3" 76mm	2" 51mm	Metal	0.625" 16mm	0°	0.5" 13mm
580-RC2452	1.75" 44mm	2.75" 70mm	4" 102mm	3" 76mm	3" 76mm	2" 51mm	Metal	0.625" 16mm	0°	0.5" 13mm
580-RC2454	1.75" 44mm	2.75" 70mm	4" 102mm	3" 76mm	3" 76mm	2" 51mm	Metal	0.625" 16mm	0°	0.5" 13mm
580-RC1820	2" 51mm	2.75" 70mm	4" 102mm	3" 76mm	3" 76mm	2" 51mm	Metal	0.625" 16mm	0°	0.5" 13mm
580-RC1822	2" 51mm	2.75" 70mm	4" 102mm	3" 76mm	3" 76mm	2" 51mm	Metal	0.625" 16mm	0°	0.5" 13mm
580-RC1824	2" 51mm	2.75" 70mm	4" 102mm	3" 76mm	3" 76mm	2" 51mm	Metal	0.625" 16mm	0°	0.5" 13mm
580-RU1824	2" 51mm	2.75" 70mm	4" 102mm	3" 76mm	3.5" 89mm	2.5" 64mm	Rubber	0.625" 16mm	0°	0.5" 13mm
580-RC0981	2.125" 54mm	2.75" 70mm	4" 102mm	3" 76mm	3" 76mm	2" 51mm	Metal	0.625" 16mm	0°	0.438" 11mm
580-RC0984	2.125" 54mm	2.75" 70mm	3" 76mm	3" 76mm	3" 76mm	2" 51mm	Metal	0.625" 16mm	0°	0.438" 11mm
580-RC2810	2.125" 54mm	4" 102mm	4" 102mm	3" 76mm	3" 76mm	2" 51mm	Metal	0.625" 16mm	0°	0.438" 11mm
580-RC2814	2.125" 54mm	4" 102mm	4" 102mm	3" 76mm	3" 76mm	2" 51mm	Metal	0.625" 16mm	0°	0.438" 11mm
580-RC2890	2.125" 54mm	4" 102mm	4" 102mm	3" 76mm	3" 76mm	2" 51mm	Metal	0.625" 16mm	0°	0.438" 11mm
580-RC2910	2.125" 54mm	4" 102mm	4" 102mm	3" 76mm	3" 76mm	2" 51mm	Metal	0.625" 16mm	0°	0.438" 11mm
580-RC2914	2.125" 54mm	4" 102mm	4" 102mm	3" 76mm	3" 76mm	2" 51mm	Metal	0.625" 16mm	0°	0.438" 11mm
580-RU0981	2.125" 54mm	2.75" 70mm	4" 102mm	3" 76mm	3.5" 89mm	2.5" 64mm	Rubber	0.625" 16mm	0°	0.438" 11mm
580-RU0982	2.125" 54mm	2.75" 70mm	4" 102mm	3" 76mm	3.5" 89mm	2.5" 64mm	Rubber	0.625" 16mm	0°	0.438" 11mm
580-RU2750	2.125" 54mm	5" 127mm	4" 102mm	3" 76mm	3.5" 89mm	2.5" 64mm	Rubber	0.625" 16mm	0°	0.438" 11mm
580-RU2754	2.125" 54mm	5" 127mm	4" 102mm	3" 76mm	3.5" 89mm	2.5" 64mm	Rubber	0.625" 16mm	0°	0.438" 11mm
580-RU2810	2.125" 54mm	4" 102mm	4" 102mm	3" 76mm	3.5" 89mm	2.5" 64mm	Rubber	0.625" 16mm	0°	0.438" 11mm
580-RU2780	2.438" 62mm	2.75" 70mm	4.5" 114mm	3.75" 95mm	3.5" 89mm	2.5" 64mm	Rubber	0.625" 16mm	0°	0" 0mm



### K&N Replacement Rubber Washers

581-0160

\$88.95-J

Made of 1/8" thick reinforced neoprene rubber. Ideal for thin panels, fenders, number plates, air cleaner lids and other locations that need to be rubber mounted.

- 1 1/4" O.D. x 5/16" hole
- 12 cards per package with 8 washers on each card



## K & N UNIVERSAL AIR FILTERS - DUAL FLANGED OVAL TAPERED

TCI Part #	Flange Inside Dia. (F)	Flange Center to Center	Base Outside Dim. (MA)	Base Outside Dim. (SA)	Top Outside Dim. (MA)	Top Outside Dim. (SA)	Top Length (L)	Top Style	Flange Length (FL)
265-KA2586	1.25" 32mm	3.125" 79mm	5" 127mm	1.875" 48mm	5.188" 132mm	2" 51mm	4.625" 117mm	Rubber	.75" 19mm
580-RU2852	2.125" 54mm	3" 76mm	6" 152mm	4" 102mm	4.5" 114mm	3.75" 95mm	4" 102mm	Rubber	0.625" 16mm
580-RU4720	2.375" 60mm	3" 76mm	6.25" 159mm	3.75" 95mm	3.438" 87mm	4.438" 113mm	5" 127mm	Rubber	.75" 19mm

## K&N CUSTOM AIR INTAKES AND ASSEMBLIES

### Aircharger® Performance Intakes - Harley-Davidson®

Get more horsepower from your Harley-Davidson® motorcycle. Eliminates the restrictive stock OE air cleaner, replacing it with a K&N High-Flow Air Filter™ and mandrel bent aluminum intake tube. K&N High-Flow Intake Systems give Harley-Davidson® motorcycles an aggressive appearance while providing a significant increase in air flow resulting in more power.

- Significantly increases performance
- Billet aluminum throttle-body mounting plate
- Includes complete breather assembly and mounting hardware
- Textured black aluminum intake tube

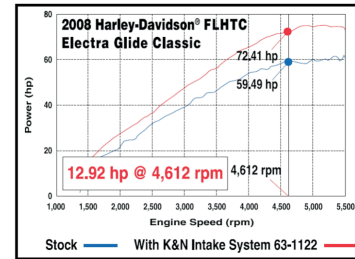


### Harley-Davidson® Touring Models

Model	Year	cc	HP Gain
FLHR Road King	08-10	1584	+12.92 hp
FLHRC Road King Classic	08-10	1584	+12.92 hp
FLHT Electra Glide Standard	08-10	1584	+12.92 hp
FLHTC Electra Glide Classic	08-10	1584	+12.92 hp
FLHTCU Ultra Classic Electric Glide	08-10	1584	+12.92 hp
FLHX Street Glide	08-10	1584	+12.92 hp
FLTR Road Glide	08-10	1584	+12.92 hp

265-631122

\$399.95-J



### Harley-Davidson® Softail & Twin Cam Models

265-631125

PTF

Model	Year	cc	HP Gain
FXSTC Softail Custom	07-10	1584/1586	+10.21 hp
FXDWG Dyna Wide Glide	07-10	1586	+10.21 hp
FXDWGI Dyna Wide Glide F/I	04-06	1432	+10.21 hp
FXDF Fat Bob	08-10	1586	+10.21 hp
FSDC Dyna Super Glide Custom	07-10	1586	+10.21 hp
FSDCI Dyna Super Glide Custom F/I	05-06	1432	+10.21 hp
FXDB Dyna Street Bob	07-10	1586	+10.21 hp
FXDBI Dyna Street Bob F/I	2006	1432	+10.21 hp
FXD Dyna Super Glide	07-10	1586	+10.21 hp
FXDI Dyna Super Glide F/I	04-06	1432	+10.21 hp
FXCWC Rocker C	08-10	1584	+10.21 hp
FLSTB Softail Cross Bones	08-10	1586	+10.21 hp
FLSTN Softail Deluxe	07-10	1586	+10.21 hp
FLSTNI Softail Deluxe F/I	05-06	1432	+10.21 hp
FLSTFB Softail Fat Boy Lo	2010	1584	+10.21 hp
FLSTF Fat Boy	07-10	1586	+10.21 hp
FLSTFI Fat Boy F/I	01-06	1432	+10.21 hp
FLSTC Heritage Softail Classic	07-10	1586	+10.21 hp
FLSTCI Heritage Softail Classic F/I	02-06	1432/1450	+10.21 hp
FXSTB Night Train	07-09	1586	+10.21 hp
FXSTBI Night Train F/I	01-06	1450	+10.21 hp
FXDL Dyna Low Rider	06-09	1586	+10.21 hp
FXDLI Dyna Low Rider F/I	04-06	1432	+10.21 hp
FXCW Rocker	08-09	1584	+10.21 hp
FXDC Dyna Super Glide Custom	2008	1586	+10.21 hp
FXSTD Softail Deuce	2007	1586	+10.21 hp

Model	Year	cc	HP Gain
FXSTDI Softail Deuce F/I	01-06	1432	+10.21 hp
FXST Softail Standard	2007	1586	+10.21 hp
FXSTI Softail Standard F/I	01-06	1432	+10.21 hp
FLTR Road Glide	2007	1586	+10.21 hp
FLTRI Road Glide F/I	02-06	1450	+10.21 hp
FLHX Street Glide	2007	1586	+10.21 hp
FLHXI Street Glide F/I	2006	1432	+10.21 hp
FLSTSC Softail Springer	2007	1584	+10.21 hp
FLSTSCI Softail Springer F/I	01-06	1450	+10.21 hp
FLHTCU Ultra Classic Electra Glide	2007	1586	+10.21 hp
FLHTCUI Ultra Classic Electra Glide F/I	02-06	1432	+10.21 hp
FLHTC Electra Glide Classic	2007	1586	+10.21 hp
FLHTCI Electra Glide Classic F/I	02-06	1432	+10.21 hp
FLHT Electra Glide Standard	2007	1586	+10.21 hp
FLHTI Electra Glide Standard F/I	03-06	1432	+10.21 hp
FLHRS Road King Custom	2007	1586	+10.21 hp
FLHRSI Road King Custom F/I	04-06	1432	+10.21 hp
FLHRC Road King Classic	2007	1586	+10.21 hp
FLHRCI Road King Classic F/I	02-06	1432	+10.21 hp
FLHR Road King	2007	1586	+10.21 hp
FLHRI Road King F/I	03-06	1432	+10.21 hp
FXDI35 35th Anniv. Super Glide F/I	2006	1432	+10.21 hp
FLSTI Heritage Softail F/I	2006	1432	+10.21 hp
FXDXI Dyna Super Glide Sport F/I	04-05	1432/1450	+10.21 hp
FLSTSCI Softail Springer Classic F/I	2005	1432	+10.21 hp
FLSTSI Heritage Springer F/I	01-03	1432	+10.21 hp