

PUIG LIGHTS

PUIG SIGNAL LIGHTS

| TCI # | Description | Colour |
|----------|--|--------|
| 749-4200 | Carbon Fiber Finger Signal (incl Clear & Smoke lenses) | Amber |
| 749-4258 | Luna Short LED Signal | Clear |
| 749-4234 | Star Signal Long | Smoke |
| 749-4235 | Star Signal Long | Clear |
| 749-4240 | Racing Signal | Smoke |
| 749-4241 | Racing Signal | Clear |
| 749-4271 | Star/Mini Replacement Signal Bulb 12V/23W | Clear |



Oval Signal



Carbon Finger Signal



Racing Signal



Star Signal



Luna Signal

PUIG MIG LICENSE SUPPORT LIGHTS

749-4489

- Homologated
- Black plastic
- Length 56 mm x Height 26 mm



PUIG LICENSE LIGHTS

749-4490

- Plate Light to Puig Fender Eliminators
- Silver
- Length 47 mm x Height 20 mm



MOTOTECK SIGNAL LIGHTS

UNIVERSAL FLUSH MOUNT



- Made in abs and polycarbonate plastic
- 3M 2-way tape trims included
- requires a Led resistor for normal rate flash

• 1 5\16 " by 2 5\8" & 33 mm x 67 mm

MTK-1 ELIPSE SIGNAL LIGHTS - (SOLD IN PAIRS)

- 1 5\16 " by 2 5\8" & 33 mm by 67 mm

| DESCRIPTION | TCI PART# |
|------------------|-----------|
| Smoke/Amber Bulb | 748-0002 |
| Amber/Amber Bulb | 748-0004 |
| Red/Amber Bulb | 748-0006 |
| Blue/Amber Bulb | 748-0008 |



MTK-1 SQUARE SIGNAL LIGHTS - (SOLD IN PAIRS)

- 1 7\8 " by 3 7\16" & 48 mm by 98 mm

| DESCRIPTION | TCI PART# |
|------------------|-----------|
| Clear/Amber Bulb | 748-0001 |
| Smoke/Amber Bulb | 748-0003 |
| Amber/Amber Bulb | 748-0005 |
| Red/Amber Bulb | 748-0007 |



UNIVERSAL SLIM LINE ELIPSE SIGNAL LIGHTS (SOLD IN PAIRS)

- Made in injected polycarbonate plastic
- 1 x 6 LEDs for a total of 6 micro LEDs (they run with 2 or 3 wires)
- 12 volt
- 3M 2-way tape trims included
- requires an LED resistor for normal rate flash

| DESCRIPTION | TCI PART# |
|-------------------------|-----------|
| Red/Clear - LED Amber | 748-0023 |
| Blue/Clear - LED Amber | 748-0024 |
| Green/Clear - LED Amber | 748-0025 |



SLIM LINE TRIMS

- Slim-line trims
- 3M 2 way tape
- dim L=3 3/8 (86 mm) x H=15/16 (18 mm) x W1 1/4 (32 mm)
- sold in pairs

| COLOR | TCI PART# |
|--------|-----------|
| Black | 748-0010 |
| Blue | 748-0011 |
| White | 748-0012 |
| Silver | 748-0013 |
| Red | 748-0014 |
| Carbon | 748-0015 |
| Orange | 748-0016 |
| Chrome | 748-0017 |

MOTOTECK SIGNAL LIGHTS

FLUSH LINE HONDA SIGNAL LIGHTS (SOLD IN PAIRS)

- Fits Honda CBR 600F4i 01-03, CBR600RR 03-06, CBR 1000
- made with injected polycarbonate plastic
- 12 volt
- requires an LED resistor for normal rate flash



| DESCRIPTION | TCI PART# |
|-----------------------|-----------|
| Smoke - LED 2x9 Amber | 748-0051 |
| Red - LED 2x9 Amber | 748-0053 |

FLUSH LINE KAWASAKI SIGNAL LIGHTS (SOLD IN PAIRS)

- made with injected polycarbonate plastic
- 12 volt
- requires an LED resistor for normal rate flash



Fits Kawasaki ZX6R 98-05, ZZR600 03-06, ZX636 03-05, ZX9R 98-03 ZX10R 04-05

| DESCRIPTION | TCI PART# |
|-----------------------------|-----------|
| Clear/Amber Bulb | 748-0090 |
| Smoke/Amber Bulb | 748-0092 |
| Amber/Amber Bulb | 748-0094 |
| Blue/Amber Bulb | 748-0096 |
| Red/Amber Bulb | 748-0098 |
| Green/Amber Bulb | 748-0100 |
| Clear - LED Amber 2 Circuit | 748-0091 |
| Smoke - LED Amber 2 Circuit | 748-0093 |
| Amber - LED Amber 2 Circuit | 748-0095 |
| Blue - LED Amber 2 Circuit | 748-0097 |
| Red - LED Amber 2 Circuit | 748-0099 |
| Green - LED Amber 2 Circuit | 748-0101 |

Fits Kawasaki ZX12R, ZX7R '96-04

| DESCRIPTION | TCI PART# |
|-----------------------------|-----------|
| Clear/Amber Bulb | 748-0110 |
| Smoke/Amber Bulb | 748-0112 |
| Amber/Amber Bulb | 748-0114 |
| Blue/Amber Bulb | 748-0116 |
| Red/Amber Bulb | 748-0118 |
| Green/Amber Bulb | 748-0120 |
| Clear - LED Amber 2 Circuit | 748-0111 |
| Smoke - LED Amber 2 Circuit | 748-0113 |
| Amber - LED Amber 2 Circuit | 748-0115 |
| Blue - LED Amber 2 Circuit | 748-0117 |
| Red - LED Amber 2 Circuit | 748-0119 |



DISPLAY STAND

748-0602

- New Mototek Innovation Display, made in plastic Abs, with 110/120 Volt transformer. Display dimension (11 3/4 inch x 23 1/4 inch) or (30 cm x 59 cm). Note: This display must not be left on 24 hours per day. Only for use during open store hours.



MOTOTECK SIGNAL LIGHTS

FLUSH LINE SUZUKI SIGNAL LIGHTS (SOLD IN PAIRS)



748-0041

- made with injected polycarbonate plastic
- 12 volt
- requires an LED resistor for normal rate flash

Fits Suzuki GSXR 600 01-05, 750 00-05, 1000 01-04

| DESCRIPTION | TCI PART# |
|-------------------------|-----------|
| Clear/Amber Bulb | 748-0040 |
| Smoke/Amber Bulb | 748-0042 |
| Amber/Amber Bulb | 748-0044 |
| Clear - LED 2 x 9 Amber | 748-0041 |
| Smoke - LED 2 x 9 Amber | 748-0043 |
| Amber - LED 2 x 9 Amber | 748-0045 |
| Blue - LED 2 x 9 Amber | 748-0046 |



748-0030

Fits Suzuki GSXR600 97-00, 750 96-99, TL-TLR1000 97-02, SV650 99-02

| DESCRIPTION | TCI PART# |
|-------------------------|-----------|
| Clear/Amber Bulb | 748-0030 |
| Smoke/Amber Bulb | 748-0032 |
| Amber/Amber Bulb | 748-0034 |
| Clear - LED 2 x 9 Amber | 748-0031 |
| Smoke - LED 2 x 9 Amber | 748-0033 |
| Amber - LED 2 x 9 Amber | 748-0035 |

FLUSH LINE YAMAHA SIGNAL LIGHTS (SOLD IN PAIRS)



748-0060

- made with injected polycarbonate plastic
- 12 volt
- requires an LED resistor for normal rate flash

Fits Yamaha YZF R199-01, YZF 600/R 96-06, FJR1300 02-03, YZF R6 99-02

| DESCRIPTION | TCI PART# |
|-----------------------------------|-----------|
| Clear/Amber Bulb | 748-0060 |
| Smoke/Amber Bulb | 748-0062 |
| Amber/Amber Bulb | 748-0064 |
| Clear - LED 2 x 9 Amber 2 Circuit | 748-0061 |
| Smoke - LED 2 x 9 Amber 2 Circuit | 748-0063 |
| Amber - LED 2 x 9 Amber 2 Circuit | 748-0065 |



748-0070

Fits Yamaha YZF R1 02-03, YZF R1/LE 04-06, YZF R6 03-07/R6S 06-07 FZ 03-06

| DESCRIPTION | TCI PART# |
|-----------------------------|-----------|
| Clear - LED Amber 2 Circuit | 748-0070 |
| Smoke - LED Amber 2 Circuit | 748-0071 |
| Amber - LED Amber 2 Circuit | 748-0072 |
| Blue - LED Amber 2 Circuit | 748-0073 |
| Red - LED Red 2 Circuit | 748-0074 |
| Smoke - LED Red 2 Circuit | 748-0075 |



748-0080

Fits Yamaha FZ1 '01-05

| DESCRIPTION | TCI PART# |
|-----------------------------|-----------|
| Clear - LED Amber 2 Circuit | 748-0080 |
| Smoke - LED Amber 2 Circuit | 748-0081 |
| Amber - LED Amber 2 Circuit | 748-0082 |

TURN SIGNAL LIGHTS & LENSES

| OEM# | Application | Description | Bulb | Front/Rear | TCI Part# |
|-------------------|---|------------------|--------|------------|-----------|
| Honda | | | | | |
| 33400-292-670 | All Models up to 1975 (CB50/750) | Chrome | Single | F/R | E60-36110 |
| 33400-341-702 | CB50/750 & CB125S '79, CM450A/E/C '82-83 | Chrome | Dual | F | E60-36120 |
| 33650-377-671 | GL1000 '75-78 & CB400-900C '82, CX500 79-82 | Chrome | Single | F/R | E60-36210 |
| 33400-460-671 | GL1000 '75-78 & CB400-900C '82, CX500 79-82 | Chrome | Dual | F | E60-36220 |
| 33600-425-673/679 | CB750F/K/L, CB900F, CBX1050, GL500/650/1000/1100 | Chrome | Single | R | E60-43310 |
| 33400-425-673 | CB750F/K/L, CB900F, CBX1050, GL500/650/1000/1100 | Chrome | Dual | F | E60-43320 |
| 33600-445-671 | CB750F/K/L, CB900F, CBX1050, GL500/650/1000/1100 | Black | Single | R | E60-72710 |
| 33400-445-671 | CB750F/K/L, CB900F, CBX1050, GL500/650/1000/1100 | Black | Dual | F | E60-72720 |
| 33400-MK7-671 | CB500, Steed 400/600, VF700/750C, VT600/700/800/1100C | Chrome | Dual | F, right | E60-76620 |
| 33450-MK7-671 | CB500, Steed 400/600, VF700/750C, VT600/700/800/1100C | Chrome | Dual | F, left | E60-76622 |
| 33600-MB1-671 | CB550SC-700SC, CB1000C, CX650C, CMX250-450, VF500C-750C, VT700/750 | Chrome | Single | R | E60-85710 |
| 33600-MJ1-670 | CB550SC, CB1000C, CX650C, CMX250/450, VF500C-750C VT500C/700 | Black | Single | R | E60-85711 |
| 33400-MB1-671 | CB550SC-700SC, CB1000C, CX650C, CMX250/450, VF700C/S, VT500/1100C | Chrome | Dual | F | E60-85720 |
| Kawasaki | | | | | |
| 23040-029 | KZ400 ALL & many other KZ models | Chrome | Single | F/R | E60-36310 |
| 23040-034 | KZ400 ALL & many other KZ models | Chrome | Dual | F | E60-36320 |
| 23040-055 | KH400 ALL & many KZ200 to KZ1100 models | Chrome | Single | F/R | E60-36910 |
| 23040-055 | KH400 ALL & many KZ200 to KZ1100 models | Chrome | Dual | F | E60-36920 |
| 23040-1018 | KZ400H, KZ440 A1/D1/D2/G1, KZ750E/G/1000A/1000 Shaft | Chrome | Single | F/R | E60-44110 |
| 23040-1017 | KZ400H, KZ440 A1/D1/D2/G1, KZ750E/G/1000A/1000 Shaft | Chrome | Dual | F | E60-44120 |
| 23037-1132/1104 | KZ550D/H, KZ700A, KZ750L/R, KZ1000J/R, KZ1100B | Black | Single | R | E60-44210 |
| 23037-1131 | KZ550D/H, KZ700A, KZ750L/R, KZ1000J/R, KZ1100B | Black | Dual | F | E60-44220 |
| 23037-1150 | ZX550A '84-85, ZX750A '83-86, ZX750 Turbo '84-85 ZX1100 '83-84 | Black | Dual | F | E60-44240 |
| 23040-1107 | ZX600 Ninja '85-87 | Black | Dual | F | E60-80140 |
| 23040-1109 | ZX600 Ninja '85-87 | Black | Single | F | E60-80141 |
| Suzuki | | | | | |
| 35601-44031 | GN400TX, SP370/400, GT125/200EN/N & many GS400-550/TS100-550 models GS1000C/EC/EN/ET/GT/LN/IN/SN/ST | Chrome | Single | F | E60-36410 |
| 35603-06B30 | GSXR250/400/750, GSXR1100 '86-87 &RG models | Black | Single | R | E60-76010 |
| 35601-06B30 | GSXR250/400/750, GSXR1100 '86-87 &RG models | Black | Dual | F | E60-76020 |
| 35603-17C30 | GSX600F, GSXR750J | Black Long | Dual | F/R | E60-76080 |
| 35603-17C20 | GSX600F, GSXR750J | Black Short | Dual | F/R | E60-76081 |
| 35603-17C20 | GS450 to 1100 80-83, GSXR750 81-83 | Chrome 35mm | Dual | F/R | E60-78652 |
| 35601-49230 | GR650 & many GS450E to GS1100SD models - Short | Black 35mm | Single | F/R | E60-78610 |
| 35601-45530 | GR650 & many GS450E to GS1100SD models - Long | Black 85mm | Single | F/R | E60-78640 |
| Yamaha | | | | | |
| 341-83310-72 | SR500, TX500/650/750, XS400SG/850/1100S, XS650/750 All | Chrome 80mm | Dual | F | E60-36620 |
| 1LJ-83310-02 | FJ1200, FZX700, YSR50, YX600 & many FZ,FZR,RZ,SRX | Black, Long Stem | Single | F/R | E60-49910 |
| 1LJ-83310-02 | FJ1200, FZX700, YSR50, YX600 & many FZ,FZR,RZ,SRX | Black, Long Stem | Dual | F/R | E60-49920 |
| 5G2-83303-70 | FJ600/1100 '84/85, XJ650 & XZ550 '82-83 XJ750 '81-83, XJ900 '83 | Black | Single | F/R | E60-89810 |
| 11H-83301-70 | FJ600/1100 '84/85, XJ650 & XZ550 '82-83 XJ750 '81-83, XJ900 '83 | Black | Dual | F | E60-89820 |
| 42X-883330-K0 | Vmax 85-88, XJ700 84-86, XV1000 84-85, XV1100 86-87 | with chrome rim | Single | F | E60-39810 |

TURN SIGNAL STEMS

EMGO TURN SIGNAL STEMS



G



H



I



K



L

Turn Signal Stems for Late Model Honda

| Application | OEM # | Figure | Post | Part # |
|--|--------------------------------|--------|----------------|-----------|
| Rebel 250/450 | 33690-KR3-672 | G | Rear | E68-77900 |
| VF500F 84-86 | 33692-KE7-000 | H | Front | E68-77901 |
| CB550SC 83, CX650C83, VF700C/S '84-'86 VT700C '84-'85, VF750C '82-83, VT750C '83 CB1000C '83, VF1100 '83-'86 | 33490-MK3-000 33490-MB1-003 | I | Front Front | E68-77902 |
| CB400F, CB1 '89, VF500F '84-'86, VFR700F '86-'87 VF1100S '84-'85 | 33691-MJ0-003 | K | Front/Rear | E68-77904 |
| CB400F, VF 500 / 700 / 750 / 1000F, VF1100S, VFR400Z, VFR 700 / 750F | 33691-MB2-003 | L | Front/Rear | E68-77905 |

REPLACEMENT TAIL LIGHTS

HONDA



HONDA RC51 - (00-06)

- Honda OEM 33710-MCF-671 replacement
- DOT approved
- Red Light Bulbs are NOT INCLUDED!

TCI PART # E62-84740



HONDA CBR 600F4 - (01-03)

- Honda OEM 33710-MBW-A11 replacement
- DOT approved
- Red Light Bulbs are NOT INCLUDED!

TCI PART # E62-84741



HONDA CBR929RR - (00-01) CBR900RR - (00-01)

- Honda OEM 33702-MCJ-671 replacement
- DOT approved
- Red Light Bulbs are NOT INCLUDED!

TCI PART # E62-84742



REPLACEMENT TAIL LIGHTS

KAWASAKI



KAWASAKI ZRX 1100 - (99-00) ZRX1200 & ZR1200 - (01-05)

- Kawasaki OEM 23025-1316 replacement
- DOT approved
- Red Light Bulbs are NOT INCLUDED!



KAWASAKI NINJA ZX-12R - (00-05)

- Kawasaki OEM 23025-1290 replacement
- DOT approved
- Red Light Bulbs are NOT INCLUDED!

TCI PART # E62-84752



SUZUKI



SUZUKI GSX-R 600 - (01-03) GSX-R 750 (00-03) & GSX-R 1000 (01-02)

- Suzuki OEM 35710-35F31 replacement
- DOT approved
- Red Light Bulbs are NOT INCLUDED!



SUZUKI GSX 1300R HAYABUSA (99-07) GSX 600F/750F KATANA (98-06)

- Suzuki OEM 35710-24F30 replacement
- DOT approved
- Red Light Bulbs are NOT INCLUDED!



REPLACEMENT TAIL LIGHTS

YAMAHA



YAMAHA YZF-R1 (98-99)

- Yamaha OEM 4XV-84710-10-00 replacement
- DOT approved
- Red Light Bulbs are NOT INCLUDED!



YAMAHA YZF-R1 (00-01) FZ1 (FZS 1000 N/NC/P/PC/R/RC/SPR) (01-04) FZ1 (FZS 1S/1SC/1T/1TC) (04-05)

- Yamaha OEM 5JJ-84710-11-00 replacement
- DOT approved
- Red Light Bulbs are NOT INCLUDED!

YAMAHA YZF-R6 (99-00)

- Yamaha OEM 5EB-84710-10-00 replacement
- DOT approved



YAMAHA YZF-R1 (00-01) FZ1 (FZS 1000 N/NC/P/PC/R/RC/SPR) (01-04) FZ1 (FZS 1S/1SC/1T/1TC) (04-05)

- LED replacement - Clear Lens Red insert housing
- Yamaha OEM 5JJ-84710-11-00
- E-Code certified



YAMAHA YZF-R1 (04-06) YZF-R1 LIMITED EDITION (2006)

- LED replacement - Clear Lens Red insert housing
- Yamaha OEM 5VY-84710-10-00
- DOT approved

DECO LIGHTS

FLUSH MOUNT FAIRING/MARKER LIGHTS

- Available in white, black, or carbon fibre. These decorative lights will mount almost anywhere. Each light includes an amber lense, rubber gasket, 12 volt 23 watt bulb and mounting hardware.
- Single Filament

| COVER | LENS COLOR | TCI # |
|--------------|------------|-----------|
| White | Amber | E61-81900 |
| Black | Amber | E61-81901 |
| Carbon Fibre | Amber | E61-81903 |

Replacement Parts

| DESCRIPTION | COLOR | TCI # |
|-------------------|-----------------------|-----------|
| Replacement Cover | White with Amber Lens | E61-81930 |



E61-81903
Carbon Fibre/Amber Lens

DECORATIVE BULLET LIGHTS

E61-73101

- An excellent bolt-on custom lighting item.
- Chrome Plated
- Red Lens

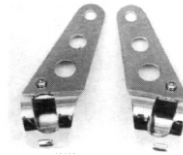


LIGHTING ACCESSORIES

HEADLIGHT BRACKET

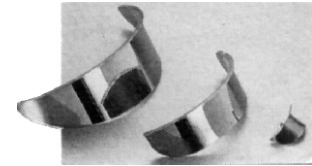
E66-35800

- Universal headlight brackets that will fit most front forks.
- Each pair includes all mounting hardware and is blister packed.
- Chrome Plated



CHROME LIGHT VISORS

| DESCRIPTION | TCI PART# |
|------------------------|-----------|
| Fits 7" Headlights | E66-10710 |
| Fits 5 3/4" Headlights | E66-10721 |



TURN SIGNAL SWITCH

370-400

- Clamp on Style



STEADLY WIRING HARNESS

703-9000

- Complete wiring harness to add a headlight and taillight to any MX bike equipped with an electronic power jet system.

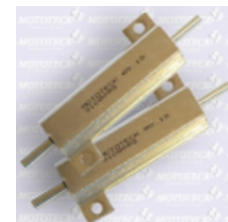
Use 10W headlight bulb if running taillight, or you can use 20W headlight bulb if only running headlight.



PUIG RELAY RESISTOR

748-0600

- LED controller for flash rating
- Universal for all LEDs
- For standard flash rate about 62.5 fpm (approx)
- one resistor for each LED



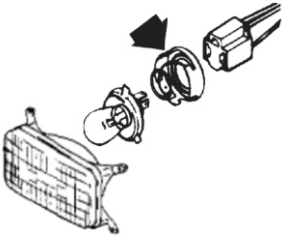
LIGHTING ACCESSORIES



FLASHER RELAYS

E66-86712

- Each replacement flasher includes a rubber mounting bracket.
- Fits Honda GL1000/1100 plus others
- 38310-415-671 - (12V/23W)



BULB HOLDER AND LOCK RING 365-9084

Holds the headlight bulb in place for all H4 type bulbs

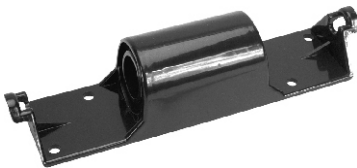
- Arctic Cat OEM 0115-285
- John Deere (81-84 Models)
- Kawasaki OEM 14020-3505 (78-81 Models)
- Sno-Jet OEM 040631



BULB & SPARK PLUG CADDY 360-1130

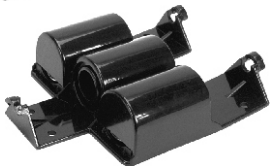
HOLDS:

- Two tail light bulbs
- One headlight bulb
- Two spark plugs (14/18 mm)(plugs and bulbs not included)
- Space for cable/wire



RIVET MOUNT PLUG HOLDER 360-1150

- Holds 2 plugs



RIVET MOUNT PLUG HOLDER 360-1151

- Holds 3 plugs

KILL SWITCHES

CR TYPE KILL BUTTON

E46-50420

- Exact replacement kill button for Honda CR models.
- Plugs into the stock wire harness.



RM/YZ TYPE KILL BUTTON

E46-50430

- Exact replacement kill button for Yamaha OEM 23X-83976-00.
- Fits 83-88 YZ models.
- Plugs into the stock wire harness.



KILL SWITCH ASSEMBLY

- Can be installed on many snowmobiles models
- Bombardier OEM 410.1033.00 use 410.1067.00, 515.0961-00, 515.0964.00, 515.1320.00, 515.1390.00, 570.151.00 and 515.1297.00

| DESCRIPTION | PART # |
|------------------------------|----------|
| SPI Tether & Switch Assembly | 305-4006 |
| SPI Tether & Cap Only | 305-4007 |



KILL SWITCH ASSEMBLY - NORMALLY OPEN TO RUN

- Connects to both rider and machine. In the event the rider falls off, the engine stops instantly.
- Complete with wire and rubber cover to keep out dirt and water.
- A necessary precaution for novice riders.
- Great for modified snowmobile mountain machines
- Arctic Cat 0636-078 use 0709-054 (84-04 Most Models EXCEPT Kitty Kat)

| DESCRIPTION | PART # |
|--------------------------------|----------|
| 7/8" Handlebar Mount | 305-1002 |
| Complete Assembly - Dash Mount | 305-4002 |
| Switch Only | 305-4001 |
| Tether and Cap Only | 305-4009 |



305-1002



305-4002



305-4001



305-4009



KILL SWITCHES

TETHER KILL SWITCH - NORMALLY CLOSED TO RUN

- Connects to both rider and machine. In the event the rider falls off, the engine stops instantly.
- Complete with wire and rubber cover to keep out dirt and water.
- A necessary precaution for novice riders.
- Great for modified snowmobile mountain machines
- Polaris 2870668 (93-02 Most Models)
- Yamaha 23H8-82550.00.00 use 8H8-82550.01.00 (79-03 Most Models)
- Open Circuit with Cap on / Cap off closes circuit

CIRCUIT

7/8" Handlebar Mount

7/8" Handlebar Mount

Complete Assembly - Dash Mount

SPI Tether & Cap Only

PART#

305-1001

E46-50412A

305-4008

305-4009



305-1001



305-4009



305-4008



E46-50412A

IGNITION SWITCHES - MOTORCYCLE

EMGO OEM-STYLE REPLACEMENT IGNITION SWITCHES

• Each switch includes two keys

Honda

| MODEL | YEAR | OEM | PART # |
|-------------------|-------|---------------|-----------|
| VF500F | 84-86 | 35100-MN4-672 | E40-15840 |
| CBR600F | 87-90 | 35100-MN4-672 | E40-15840 |
| CBR600F2-F | 91-96 | 35100-MV9-601 | E40-15870 |
| CB650/C | 79-82 | 35100-422-017 | E40-15820 |
| CB650 SC | 1982 | 35100-422-017 | E40-15820 |
| CB750 C/F/K/L | 79-82 | 35100-438-007 | E40-15830 |
| CB750 SC | 82-83 | 35100-438-007 | E40-15830 |
| VF750C/750SC/750F | 82-86 | 35100-MN4-672 | E40-15840 |
| CB900C | 80-81 | 35100-438-007 | E40-15830 |
| CB900F | 81-82 | 35100-438-007 | E40-15830 |
| CBX | 79-80 | 35100-438-007 | E40-15830 |
| CBR1000F | 87-88 | 35100-MN4-672 | E40-15840 |
| VF1000F | 1984 | 35100-MN4-672 | E40-15840 |



E40-15820



E40-15830

Kawasaki

| | | | |
|--------|-------|----------------|-----------|
| EX500 | 87-89 | 27005-5047 | E40-80610 |
| KZ550 | 82-84 | 27005-5047 | E40-80610 |
| ZX550 | 84-85 | 27005-5047 | E40-80610 |
| ZX600 | 85-87 | 27005-5047 | E40-80610 |
| KZ650 | 73-80 | 27005-083/5007 | E40-80600 |
| KZ650 | 81-83 | 27005-5047 | E40-80610 |
| KZ700 | 1984 | 27005-5047 | E40-80610 |
| KZ750 | 73-80 | 27005-083/5007 | E40-80600 |
| VN750 | 86-89 | 27005-5047 | E40-80610 |
| ZX750 | 83-88 | 27005-5047 | E40-80610 |
| KZ900 | 73-80 | 27005-083/5007 | E40-80600 |
| ZX900 | 84-86 | 27005-5047 | E40-80610 |
| KZ1000 | 73-80 | 27005-083/5007 | E40-80600 |
| KZ1000 | 81-83 | 27005-5047 | E40-80610 |
| KX1100 | 81-83 | 27005-5047 | E40-80610 |
| ZX1100 | 83-84 | 27005-5047 | E40-80610 |



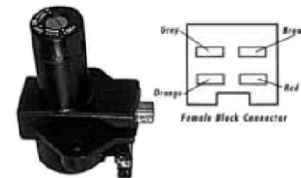
E40-15840



E40-15870

Suzuki

| | | | |
|----------------------|-------|-------------|-----------|
| GSF400 Bandit | 91-93 | 37100-47011 | E40-71030 |
| GS450 | 80-82 | 37100-47010 | E40-71010 |
| GS450T | 81-82 | 37100-47010 | E40-71010 |
| GS500E | 89-97 | 37100-47011 | E40-71030 |
| GS550 | 78-82 | 37100-47010 | E40-71010 |
| GS550 B/C/EC/N/EN/ET | 78-80 | 37100-47010 | E40-71010 |
| GS550 I/T | 80-83 | 37100-47010 | E40-71010 |
| GSX600F Katana | 88-97 | 37100-47011 | E40-71030 |
| GSX- R 600W | 92-94 | 37100-47011 | E40-71030 |
| RF 600R | 94-96 | 37100-47011 | E40-71030 |
| GS650/G | 81-83 | 37100-47010 | E40-71010 |
| GS750 | 78-81 | 37100-47010 | E40-71010 |
| GS750 C/EC/N/EN | 78-79 | 37100-47010 | E40-71010 |
| GS750L | 79-81 | 37100-47010 | E40-71010 |
| GSX750F Katana | 89-97 | 37100-47011 | E40-71030 |
| GSX-R 750 | 86-91 | 37100-47011 | E40-71030 |
| GSX-R 750W | 1994 | 37100-47011 | E40-71030 |
| VX 800 | 90-93 | 37100-47011 | E40-71030 |
| GS850 | 79-80 | 37100-47010 | E40-71010 |
| GS850GLT | 1980 | 37100-47010 | E40-71010 |
| RF 900R | 94-97 | 37100-47011 | E40-71030 |



E40-71010



E40-71030



IGNITION SWITCHES - MOTORCYCLE

Suzuki con't

| MODEL | YEAR | OEM | PART # |
|------------------|-------|-------------|-----------|
| GS1000 | 79-80 | 37100-47010 | E40-71010 |
| GS1000 LN/SN/GLT | 1980 | 37100-47010 | E40-71010 |
| GS1100 | 1980 | 37100-47010 | E40-71010 |
| GS1100LN | 1979 | 37100-47010 | E40-71010 |
| GS1100ET | 1980 | 37100-47010 | E40-71010 |
| G SX-R 1100/W | 89-94 | 37100-47011 | E40-71030 |



E40-71340

Yamaha

Models requiring 4 position switch with 3 terminals and fork lock

| OEM # | YEAR | OEM | PART # |
|-------------------------|-------|--------------|-----------|
| #47M-82501-50 | | | E40-71340 |
| SR250 | 80-82 | 3JV-82501-00 | E40-71340 |
| SR250S | 1980 | 3JV-82501-00 | E40-71340 |
| XS400 Maxim | 82-83 | 3JV-82501-00 | E40-71340 |
| XS400R Seca | 82-83 | 3JV-82501-00 | E40-71340 |
| XS400S Heritage Special | 1983 | 3JV-82501-00 | E40-71340 |
| XJ550 Maxim | 81-83 | 3JV-82501-00 | E40-71340 |
| XV500 Virago | 1983 | 3JV-82501-00 | E40-71340 |
| XT550 | 82-83 | 5Y3-82508-80 | E40-71410 |
| FJ600 | 1984 | 3JV-82501-00 | E40-71340 |
| FZ600 | 86-87 | 3JV-82501-00 | E40-71340 |
| FZR600R | 89-97 | 3JV-82501-00 | E40-71340 |
| XJ600S Seca | 92-93 | 3JV-82501-00 | E40-71340 |
| XT600 | 84-89 | 5Y3-82508-80 | E40-71410 |
| XJ650 Maxim | 80-83 | 3JV-82501-00 | E40-71340 |
| XS650 Special | 1981 | 3JV-82501-00 | E40-71340 |
| XS650 Heritage Special | 82-83 | 3JV-82501-00 | E40-71340 |
| FZ700 | 1987 | 3JV-82501-00 | E40-71340 |
| FZ750 | 85-88 | 3JV-82501-00 | E40-71340 |
| FZ750R | 87-88 | 3JV-82501-00 | E40-71340 |
| XJ750 Maxim | 1983 | 3JV-82501-00 | E40-71340 |
| XS750 | 78-79 | 3JV-82501-00 | E40-71340 |
| XS750S Special | 78-79 | 3JV-82501-00 | E40-71340 |
| XV750 Virago | 81-83 | 3JV-82501-00 | E40-71340 |
| XV750M Midnight Virago | 1983 | 3JV-82501-00 | E40-71340 |
| XS850/850L/850S | 1981 | 3JV-82501-00 | E40-71340 |
| XV920R | 81-82 | 3JV-82501-00 | E40-71340 |
| FZR1000 | 87-90 | 3JV-82501-00 | E40-71340 |
| FJ1100 | 84-85 | 3JV-82501-00 | E40-71340 |
| FJ1200 | 91-92 | 3JV-82501-00 | E40-71340 |
| FJ1200A ABS | 92-93 | 3JV-82501-00 | E40-71340 |



E40-71410



E40-80600



E40-80610

IGNITION SWITCHES ATV/UTV

Arctic Cat

| MODEL | YEAR | OEM | PART # |
|--------------------|-------|----------|-----------|
| 250 (2x4) | 00-05 | 3430-040 | 01-118-62 |
| 250 (4x4) | 01-05 | 3430-040 | 01-118-62 |
| 300 (2x4) | 00-03 | 3430-040 | 01-118-62 |
| 300 (4x4) | 00-05 | 3430-040 | 01-118-62 |
| 375 (all) | 2002 | 3430-040 | 01-118-62 |
| 400 (2x4) Manual | 00-04 | 3430-040 | 01-118-62 |
| 400 (2x4) Auto | 03-04 | 3430-040 | 01-118-62 |
| 400 (4x4) Manual | 00-07 | 3430-040 | 01-118-62 |
| 400 (4x4) Auto | 03-07 | 3430-040 | 01-118-62 |
| 400 (4x4) Auto TRV | 06-07 | 3430-040 | 01-118-62 |
| 500 Manual | 01-07 | 3430-040 | 01-118-62 |
| 500 Auto | 00-07 | 3430-040 | 01-118-62 |
| 500 TBX | 2003 | 3430-040 | 01-118-62 |
| 500 TRV | 03-06 | 3430-040 | 01-118-62 |



01-118-62

IGNITION SWITCHES ATV/UTV

Honda

| MODEL | YEAR | OEM | PART # |
|-----------------------|-------|---------------|-----------|
| TRX250 | 97-01 | 35100-HM8-000 | 01-118-54 |
| TRX250 EX | 01-05 | 35100-HM8-000 | 01-118-54 |
| TRX250 TE/TM | 02-19 | 35100-HM8-000 | 01-118-54 |
| TRX300 A/FW | 99-00 | 35010-HC4-670 | 01-118-57 |
| TRX300 EX | 93-06 | 35010-HM3-000 | 01-118-58 |
| TRX350 FA/FGA | 04-07 | 35100-HN5-670 | 01-118-51 |
| TRX350 FE/FM/TE/TM | 00-06 | 35100-HN5-670 | 01-118-51 |
| TRX400 EX | 99-04 | 35100-HN1-000 | 01-118-54 |
| TRX420 FA/FPA/FPE/FPM | 09-11 | 35100-HP5-600 | 01-118-51 |
| TRX420 FA/FPA | 12-14 | 35100-HP0-A70 | 01-115-51 |
| TRX420 FE | 07-11 | 35100-HP5-600 | 01-118-51 |
| TRX420 FE/FPE/FPM | 12-13 | 35100-HP0-A70 | 01-115-51 |
| TRX420 FM | 07-11 | 35100-HN0-670 | 01-118-51 |
| TRX420 TE | 07-11 | 35100-HP5-600 | 01-118-51 |
| TRX420 TE | 12-13 | 35100-HP0-A70 | 01-118-51 |
| TRX450 ER | 06-09 | 35100-HP1-003 | 01-118-64 |
| TRX450 ER | 12-14 | 35100-HP1-003 | 01-118-64 |
| TRX450 ES/S | 98-01 | 35100HN0-A02 | 01-118-51 |
| TRX450 FE/FM | 02-04 | 35100-HP5-600 | 01-118-51 |
| TRX450 R | 04-09 | 35100-HP1-003 | 01-118-64 |
| TRX500 FA | 01-04 | 35100HN0-A02 | 01-118-51 |
| TRX500 FA | 07-14 | 35100-HP0-A70 | 01-118-51 |
| TRX500 FE/FM/FPE | 07-13 | 35100-HP0-A70 | 01-118-51 |
| TRX500 FG | 2004 | 35100HN0-A02 | 01-118-51 |
| TRX500 FGA | 07-08 | 35100-HP0-A70 | 01-118-51 |
| TRX500 FPA | 09-14 | 35100-HP0-A70 | 01-118-51 |
| TRX500 FPM | 08-13 | 35100-HP0-A70 | 01-118-51 |

Kawasaki

| | | | |
|------------------|-------|------------|-----------|
| KFX80 (KSF80 A1) | 03-06 | 27005-S004 | 01-118-69 |
| KLF110 Mojave | 1988 | 27005-1131 | 01-118-67 |
| KLF220 Bayou | 88-95 | 27005-1131 | 01-118-67 |
| KLF300 Bayou | 88-90 | 27005-1132 | 01-118-66 |
| KLF300 Bayou | 91-96 | 27005-1159 | 01-118-66 |
| KLF300 Bayou | 97-05 | 27005-1201 | 01-118-66 |
| KVF300 Prairie | 1999 | 27005-1159 | 01-118-66 |
| KVF300 Prairie | 00-02 | 27005-1229 | 01-118-65 |
| KVF360 Prairie | 03-12 | 27005-1229 | 01-118-65 |
| KLF400 | 93-95 | 27005-1159 | 01-118-66 |
| KLF400 Bayou | 1996 | 27005-1159 | 01-118-66 |
| KLF400 Bayou | 97-99 | 27005-1201 | 01-118-66 |
| KVF400 Prairie | 97-98 | 27005-1159 | 01-118-66 |
| KVF400 Prairie | 99-02 | 27005-1229 | 01-118-65 |
| KFX450R | 08-14 | 27005-1229 | 01-118-65 |

Polaris

| | | | |
|--------------------------|-------|-----------------|-----------|
| Diesel | 00-01 | 4012163 | 01-118-68 |
| 150 ACE (all) | 17-18 | 4012165 | 01-118-46 |
| 250 Trail Blazer | 1999 | 4110209 | 01-118-70 |
| 250 Trail Blazer/Freedom | 00-03 | 4012163/4010390 | 01-118-68 |
| 250 Xplorer/4x4 | 00-02 | 4012163/4010390 | 01-118-68 |
| 300 Hawkeye 2x4 | 08-10 | 4012165 | 01-118-46 |
| 300 Sportsman | 08-15 | 4012165 | 01-118-46 |
| 325 Hawkeye 2x4 | 2015 | 4012165 | 01-118-46 |
| 325 Magnum 2x4, 4x4 | 00-02 | 4012163/4010390 | 01-118-68 |
| 325 Trail Boss/SE | 00-02 | 4012163/4010390 | 01-118-68 |
| 325 Trail Boss | 2002 | 4010390 | 01-118-68 |
| 325 Xpedition | 00-02 | 4012163/4010390 | 01-118-68 |





IGNITION SWITCHES ATV/UTV

Polaris con't

| MODEL | YEAR | OEM | PART # |
|----------------------------------|-------|-----------------|-----------|
| 330 ATP 4x4 | 2004 | 4010390 | 01-118-68 |
| 330 Magnum 2x4, 4x4 | 2003 | 4010390 | 01-118-68 |
| 330 Trail Blazer | 08-13 | 4012165 | 01-118-46 |
| 330 Trail Boss | 2003 | 4010390 | 01-118-68 |
| 330 Trail Boss | 08-13 | 4012165 | 01-118-46 |
| 335 Sportsman | 2000 | 4010390 | 01-118-68 |
| 400L Big Boss 6x6 | 1997 | 4110209 | 01-118-70 |
| 400 Hawkeye HO 2x4, HD | 11-14 | 4012165 | 01-118-46 |
| 400 Magnum 2x4, 4x4 | 97-98 | 4110209 | 01-118-70 |
| 400 Ranger Series 10-11 | | 4010390 | 01-118-68 |
| 400 Scrambler | 1999 | 4110209 | 01-118-70 |
| 400 Sport | 1999 | 4110209 | 01-118-70 |
| 400 Scrambler 2x4, 4x4 | 00-02 | 4010390 | 01-118-68 |
| 400 Sportsman 4x4/L | 96-97 | 4110209 | 01-118-70 |
| 400 Sportsman | 01-04 | 4012163/4010390 | 01-118-68 |
| 400 Sportsman HO 4x4, SE | 08-14 | 4012165 | 01-118-46 |
| 400 UTV 2x4,4x4,6x6 Series | 10-11 | 4010390 | 01-118-68 |
| 400 Xplorer | 1999 | 4110209 | 01-118-70 |
| 400 Xplorer | 00-02 | 4012163/4010390 | 01-118-68 |
| 425 Xpedition | 00-02 | 4010390 | 01-118-68 |
| 450 Diesel, Intl | 1999 | 4110209 | 01-118-70 |
| 450 Farmland 2x4 | 16-17 | 4012165 | 01-118-46 |
| 450 Outlaw S, MXR | 08-10 | 4012163 | 01-118-68 |
| 450 Sportsman | 16-18 | 4012165 | 01-118-46 |
| 500 ATP 4x4 | 2004 | 4010390 | 01-118-68 |
| 500 ATV PRO 4x4 PPS | 2002 | 4010390 | 01-118-68 |
| 500 Big Boss 6x6/Intl | 98-99 | 4110209 | 01-118-70 |
| 500 Big Boss Intl | 00-02 | 4010390 | 01-118-68 |
| 500 LUH 6x6 PPS | 2002 | 4010390 | 01-118-68 |
| 500 Magnum | 1999 | 4110209 | 01-118-70 |
| 500 Magnum 2x4, 4x4 | 00-03 | 4010390 | 01-118-68 |
| 500 Outlaw | 06-07 | 4012163 | 01-118-68 |
| 500 PTV 4x4, 6x6 Series 10 | | 4010390 | 01-118-68 |
| 500 Predator/LE | 03-07 | 4012163 | 01-118-68 |
| 500 Ranger 2x4,4x4 (all) | 09-10 | 4012165 | 01-118-46 |
| 500 Scrambler | 1999 | 4110209 | 01-118-70 |
| 500 Scrambler 2x4, 4x4 | 00-03 | 4010390 | 01-118-68 |
| 500 Scrambler 2x4,4x4 Intl | 08-12 | 4012165 | 01-118-46 |
| 500 Sportsman/RSE | 1999 | 4110209 | 01-118-70 |
| 500 Sportsman (all) | 00-04 | 4012163/4010390 | 01-118-68 |
| 500 Sportsman (all) | 08-13 | 4012165 | 01-118-46 |
| 500 UTV 2x4,4x4,6x6 Series | 10-11 | 4010390 | 01-118-68 |
| 500 Worker | 1999 | 4110209 | 01-118-70 |
| 500 Worker | 2001 | 4012163 | 01-118-68 |
| 525 Outlaw S 2x4, IRS | 07-11 | 4012163 | 01-118-68 |
| 550 Sportsman (all) | 08-14 | 4012165 | 01-118-46 |
| 570 Ranger XP/ Full size/Crew | 2016 | 4012165 | 01-118-46 |
| 570 RGR Full size/EFI/Crew | 2015 | 4012165 | 01-118-46 |
| 570 RZR/EFI/PS/S | 13-18 | 4012165 | 01-118-46 |
| 570 Sportsman (all) | 14-18 | 4012165 | 01-118-46 |
| 570 TR PRM PS MD | 2015 | 4012165 | 01-118-46 |
| 600 Sportsman | 03-04 | 4010390 | 01-118-68 |
| 700 Ranger (all) | 2009 | 4012165 | 01-118-46 |
| 700 Sportsman | 02-03 | 4010390 | 01-118-68 |



01-118-46



01-118-68



01-118-70

IGNITION SWITCHES ATV/UTV

Polaris con't

| MODEL | YEAR | OEM | PART # |
|---------------------------|-------|---------|-----------|
| 800 Forest 6x6 | 2015 | 4012165 | 01-118-46 |
| 800 Ranger (all) | 10-14 | 4012165 | 01-118-46 |
| 800 RGR 6x6, MD | 15-17 | 4012165 | 01-118-46 |
| 800 RZR (all) | 09-14 | 4012165 | 01-118-46 |
| 800 Sportsman (all) | 08-14 | 4012165 | 01-118-46 |
| 850 Scrambler HO/EPS | 13-18 | 4012165 | 01-118-46 |
| 850 Sportsman (all) | 09-18 | 4012165 | 01-118-46 |
| 900 Ranger (all) | 11-18 | 4012165 | 01-118-46 |
| 900 RGR XP (all) | 14-18 | 4012165 | 01-118-46 |
| 900 RZR (all) | 11-16 | 4012165 | 01-118-46 |
| 1000 General | 16-18 | 4012165 | 01-118-46 |
| 1000 Ranger (all), Diesel | 15-18 | 4012165 | 01-118-46 |
| 1000 RGR XP (all) | 2017 | 4012165 | 01-118-46 |
| 1000 RZR (all) | 14-16 | 4012165 | 01-118-46 |
| 1000 Scrambler | 14-18 | 4012165 | 01-118-46 |
| MD/XP/HO EPS | | | |
| 1000 Sportsman Touring | 15-18 | 4012165 | 01-118-46 |
| 1500 UTV 2x4 Series 11 | | 4010390 | 01-118-68 |



01-118-46



01-118-52



01-118-53

Suzuki

| | | | |
|---------------------------|-------|----------------|-----------|
| QuadSport Z 50 | 06-09 | 37110-40B00 | 01-118-69 |
| LT 80 | 87-06 | 37110-40B00 | 01-118-69 |
| LTF 250 Ozark | 02-14 | 37110-05G00 | 01-118-62 |
| LTZ 250 QuadSport | 04-09 | 37110-05G00 | 01-118-62 |
| LT-A 400 Eiger, King Quad | 02-16 | 37110-38F00/10 | 01-118-71 |
| LT-F 400 Eiger, King Quad | 02-16 | 37110-38F00/10 | 01-118-71 |
| LT-A 450X King Quad | 07-10 | 37110-38F00/10 | 01-118-71 |
| LT-A 500X King Quad | 09-16 | 37110-38F00/10 | 01-118-71 |
| LTF 500 Quadmaster | 00-01 | 37110-05G00 | 01-118-62 |
| LTF 500 F QuadrRunner | 98-02 | 37110-05G00 | 01-118-62 |
| LT-A 750 King Quad | 2016 | 37110-38F00/10 | 01-118-71 |



01-118-55



01-118-60

Yamaha

| | | | |
|-------------------------|-------|-----------------|-----------|
| 50 Raptor | 04-08 | 4BD-82510-10-00 | 01-118-52 |
| 80 Badger | 86-94 | 2FJ-82510-02-00 | 01-118-53 |
| 80 Badger | 95-01 | 4BD-82510-10-00 | 01-118-52 |
| 80 Grizzly | 05-08 | 4BD-82510-10-00 | 01-118-52 |
| 80 Raptor | 02-08 | 4BD-82510-10-00 | 01-118-52 |
| 125 Breeze | 89-94 | 2FJ-82510-02-00 | 01-118-53 |
| 125 Breeze | 95-01 | 4BD-82510-10-00 | 01-118-52 |
| 100 Champ | 87-91 | 2FJ-82510-02-00 | 01-118-53 |
| 125 Breeze | 02-04 | 5LP-82510-00-00 | 01-118-55 |
| 125 Grizzly | 04-13 | 5LP-82510-00-00 | 01-118-55 |
| 125 Raptor | 11-13 | 5LP-82510-00-00 | 01-118-55 |
| 225 Moto-4 | 85-88 | 2FJ-82510-02-00 | 01-118-53 |
| 250 Bear Tracker | 00-01 | 4BD-82510-10-00 | 01-118-52 |
| 250 Moto-4 | 89-91 | 2FJ-82510-02-00 | 01-118-53 |
| 250 Raptor | 08-13 | 5LP-82510-00-00 | 01-118-55 |
| 250 Timberwolf | 96-00 | 4BD-82510-10-00 | 01-118-52 |
| 350 Banshee | 88-94 | 1UY-82510-02-00 | 01-118-53 |
| 350 Banshee | 95-01 | 4BD-82510-10-00 | 01-118-52 |
| 350 Banshee | 02-06 | 5FK-82510-00-00 | 01-118-60 |
| 350 Big Bear 4WD | 87-88 | 1UY-82510-02-00 | 01-118-53 |
| 350 Big Bear 4WD | 89-94 | 2FJ-82510-02-00 | 01-118-53 |
| 350 Big Bear 2x4, 4x4 | 95-99 | 4BD-82510-10-00 | 01-118-52 |
| 350 Bruin | 04-06 | 5LP-82510-00-00 | 01-118-55 |
| 350 Grizzly 2WD/4WD/IRS | 07-14 | 5LP-82510-00-00 | 01-118-55 |
| 350 Grizzly 2WD, 4WD | 09-14 | 5KM-82510-00-00 | 01-118-63 |



01-118-62



01-118-63



01-118-68



01-118-71



IGNITION SWITCHES ATV/UTV

Yamaha con't

| MODEL | YEAR | OEM | PART # |
|----------------------|-------------|-----------------|-----------|
| 350 Moto-4 | 87-88 | 1UY-82510-02-00 | 01-118-53 |
| 350 Moto-4 | 89-90/92-94 | 2FJ-82510-02-00 | 01-118-53 |
| 350 Moto-4 | 1995 | 4BD-82510-10-00 | 01-118-52 |
| 350 Raptor | 04-13 | 5LP-82510-00-00 | 01-118-55 |
| 350 Warrior | 1987 | 1UY-82510-02-00 | 01-118-53 |
| 350 Warrior | 88-95 | 2FJ-82510-02-00 | 01-118-53 |
| 350 Warrior | 96-01 | 4BD-82510-10-00 | 01-118-52 |
| 350 Warrior | 02-04 | 5LP-82510-00-00 | 01-118-55 |
| 350 Wolverine | 95-01 | 4BD-82510-10-00 | 01-118-52 |
| 350 Wolverine XX, XW | 02-08 | 5LP-82510-00-00 | 01-118-55 |
| YFZ 350 | 87/92 | 1UY-82510-02-00 | 01-118-53 |
| 400 Big Bear | 00-01 | 4BD-82510-10-00 | 01-118-52 |
| 400 Big Bear 4WD | 09-12 | 5KM-82510-00-00 | 01-118-63 |
| 400 Kodiak | 93-01 | 4BD-82510-10-00 | 01-118-52 |
| 400 Kodiak | 2002 | 5KM-82510-00-00 | 01-118-63 |
| 400 Kodiak | 03-06 | 5ND-82510-00-00 | 01-118-56 |
| 400 Grizzly | 2008 | 5ND-82510-00-00 | 01-118-56 |
| 450 Grizzly | 07-14 | 5ND-82510-00-00 | 01-118-56 |
| 450 Wolverine | 06-10 | 5ND-82510-00-00 | 01-118-56 |
| 500 Grizzly | 98-00 | 4BD-82510-10-00 | 01-118-52 |
| 660 Grizzly (all) | 02-08 | 5KM-82510-00-00 | 01-118-63 |
| 660 Raptor | 01-05 | 5LP-82510-00-00 | 01-118-55 |
| 700 Raptor | 06-08 | 5LP-82510-00-00 | 01-118-55 |
| Pro-4 Hauler | 1989 | 2FJ-82510-02-00 | 01-118-53 |



01-118-52



01-118-53



01-118-55



01-118-56



01-118-63

ATV/UTV STARTERS

| Make/Model | Year | OE# | TCI Part # |
|-------------------------|-------|------------------|------------|
| Arctic Cat | | | |
| 250 2x4 | 99-05 | 3545-017 | 01-1110-10 |
| 300 2x4 / 4x4 | 98-05 | 3545-017 | 01-1110-10 |
| 375 Automatic 2x4 / 4x4 | 2002 | 3545-016 | 01-1110-00 |
| 400 4x4 (all) | 03-08 | 3545-016 | 01-1110-00 |
| 500 TRV | 09-10 | 0825-011/013/024 | 01-1010-00 |
| 550 HI EFI | 09-11 | 0825-011/013/024 | 01-1010-00 |
| 550, GT, LTD, XT | 12-13 | 0825-011/013/024 | 01-1010-00 |
| 550s H1 | 10-11 | 0825-011/013/024 | 01-1010-00 |
| Alterra 550 | 2016 | 0825-011/013/024 | 01-1010-00 |
| Alterra TRV 550 | 2017 | 0825-011/013/024 | 01-1010-00 |
| Prowler 550 4x4 | 2009 | 0825-011/013/024 | 01-1010-00 |
| Prowler 550 XT | 12-14 | 0825-011/013/024 | 01-1010-00 |
| TRV 550 (all) | 11-15 | 0825-011/013/024 | 01-1010-00 |
| TRV 550s | 10-11 | 0825-011/013/024 | 01-1010-00 |
| XR 550 (all) | 2015 | 0825-011/013/024 | 01-1010-00 |
| 650 | 2012 | 0825-011/013/024 | 01-1010-00 |
| 650 4x4 Automatic | 2010 | 0825-011/013/024 | 01-1010-00 |
| 650 H1 | 08/11 | 0825-011/013/024 | 01-1010-00 |
| 650 TBX / TRV | 2009 | 0825-011/013/024 | 01-1010-00 |
| Prowler 650 H1 | 2008 | 0825-011/013/024 | 01-1010-00 |
| Prowler 650 XT | 2009 | 0825-011/013/024 | 01-1010-00 |
| Prowler XT 650 H1 | 2008 | 0825-011/013/024 | 01-1010-00 |
| 700 H1 (all) | 08-11 | 0825-011/013/024 | 01-1010-00 |
| 700 Mud Pro | 12-17 | 0825-011/013/024 | 01-1010-00 |
| 700 TRV, TRV 700 (all) | 09-16 | 0825-011/013/024 | 01-1010-00 |
| 700, GT, LTD, XT | 12-14 | 0825-011/013/024 | 01-1010-00 |
| 700s H1 | 10-11 | 0825-011/013/024 | 01-1010-00 |



ATV/UTV STARTERS

| Make/Model | Year | OE# | TCI Part # |
|---|-------------|-------------------|------------|
| Arctic Cat | | | |
| Alterra 700 (all) | 16-17 | 0825-011/013/024 | 01-1010-00 |
| HDX 700 Crew XT | 2017 | 0825-011/013/024 | 01-1010-00 |
| HDX 700 XT, 700 HDX XT | 16-17 | 0825-011/013/024 | 01-1010-00 |
| Prowler 700 HDX (all) | 11-16 | 0825-011/013/024 | 01-1010-00 |
| Prowler 700 XT | 09/15-17 | 0825-011/013/024 | 01-1010-00 |
| Prowler 700 XTX, Prowler XTX 700 | 08-09/12-14 | 0825-011/013/024 | 01-1010-00 |
| Prowler 700s XTX | 2011 | 0825-011/013/024 | 01-1010-00 |
| TBX 700 (all) | 12-17 | 0825-011/013/024 | 01-1010-00 |
| TRV 700s H1 | 10-11 | 0825-011/013/024 | 01-1010-00 |
| VLX 700 (all) | 2017 | 0825-011/013/024 | 01-1010-00 |
| XR 700 | 2015 | 0825-011/013/024 | 01-1010-00 |
| 1000 TRV | 2009 | 0825-011/013/024 | 01-1010-00 |
| Alterra 1000 | 2017 | 0825-011/013/024 | 01-1010-00 |
| Prowler 1000 | 15-17 | 0825-011/013/024 | 01-1010-00 |
| Thundercat 1000 | 08-09 | 0825-011/013/024 | 01-1010-00 |
| Can Am | | | |
| Outlander 500 (all) | 07-15 | 420684560/562/566 | 01-190-25 |
| Outlander L 500 EFI, L Max 500 EFI | 2015 | 420684560/562/566 | 01-190-25 |
| Outlander Max 500 (all) | 07-15 | 420684560/562/566 | 01-190-25 |
| Renegade 500 | 08-19 | 420684560/562/566 | 01-190-25 |
| Renegade 500 EFI | 10-15 | 420684560/562/566 | 01-190-25 |
| Outlander 570 EFI (all) | 16-19 | 420684560/562/566 | 01-190-25 |
| Outlander L 570 EFI, L Max 570 EFI (except DPS) | 2016 | 420684560/562/566 | 01-190-25 |
| Outlander Max 570 EFI (all) | 16-19 | 420684560/562/566 | 01-190-25 |
| Outlander Max Pro 570 EFI | 17-19 | 420684560/562/566 | 01-190-25 |
| Renegade 570 EFI (all) | 16-19 | 420684560/562/566 | 01-190-25 |
| Outlander 6x6 650 EFI | 15-19 | 420684560/562/566 | 01-190-25 |
| Outlander 650 (all) | 06-19 | 420684560/562/566 | 01-190-25 |
| Outlander Max 6x6 650 EFI | 18-19 | 420684560/562/566 | 01-190-25 |
| Outlander Max 650 (all) | 06-19 | 420684560/562/566 | 01-190-25 |
| Outlander Max Pro 650 EFI | 2017 | 420684560/562/566 | 01-190-25 |
| Renegade 650 EFI | 18-19 | 420684560/562/566 | 01-190-25 |
| Commander 800 (all) | 11/13-15 | 420684560/562/566 | 01-190-25 |
| Commander 800R (all) | 12-13/16-19 | 420684560/562/566 | 01-190-25 |
| Commander Max 800R EFI | 16-19 | 420684560/562/566 | 01-190-25 |
| Defender HD8 | 16-19 | 420684560/562/566 | 01-190-25 |
| Defender Max HD8 | 17-19 | 420684560/562/566 | 01-190-25 |
| Defender T DH8 | 2017 | 420684560/562/566 | 01-190-25 |
| Maverick Trail 800 | 2019 | 420684560/562/566 | 01-190-25 |
| Maverick Trail 800R EFI | 2018 | 420684560/562/566 | 01-190-25 |
| Outlander 800, 800 XT | 06-08 | 420684560/562/566 | 01-190-25 |
| Outlander 800R (all) | 09-15 | 420684560/562/566 | 01-190-25 |
| Outlander Max 800 (all) | 06-08 | 420684560/562/566 | 01-190-25 |
| Outlander Max 800R (all) | 09-15 | 420684560/562/566 | 01-190-25 |
| Renegade 800, 800 X | 2008 | 420684560/562/566 | 01-190-25 |
| Renegade 800 EFI | 2007 | 420684560/562/566 | 01-190-25 |
| Renegade 800R (all) | 09-15 | 420684560/562/566 | 01-190-25 |
| Traxter HD8 | 16-19 | 420684560/562/566 | 01-190-25 |
| Traxter Max HD8 | 2017 | 420684560/562/566 | 01-190-25 |
| Outlander 850 EFI | 16/18-19 | 420684560/562/566 | 01-190-25 |
| Outlander 850 Pro EFI | 2017 | 420684560/562/566 | 01-190-25 |
| Outlander Max 850 EFI | 16/18-19 | 420684560/562/566 | 01-190-25 |
| Outlander Max Pro 850 EFI | 2017 | 420684560/562/566 | 01-190-25 |
| Renegade 850 EFI | 16-19 | 420684560/562/566 | 01-190-25 |
| Commander 1000 (all) | 11-15 | 420684560/562/566 | 01-190-25 |
| Commander 1000 EFI | 12-17 | 420684560/562/566 | 01-190-25 |



ATV/UTV STARTERS

| Make/Model | Year | OE# | TCI Part # |
|---------------------------------------|-------------|-----------------------------|------------|
| Can Am | | | |
| Commander 1000R EFI | 18-19 | 420684560/562/566 | 01-190-25 |
| Commander Max 1000 (all) | 11-15 | 420684560/562/566 | 01-190-25 |
| Commander Max 1000R EFI | 18-19 | 420684560/562/566 | 01-190-25 |
| Defender HD10 (all) | 16-19 | 420684560/562/566 | 01-190-25 |
| Defender Max HD10 (all) | 17-19 | 420684560/562/566 | 01-190-25 |
| Maverick 1000 (all) | 13-15/17 | 420684560/562/566 | 01-190-25 |
| Maverick 1000R EFI | 2016 | 420684560/562/566 | 01-190-25 |
| Maverick 1000R | 17-18 | 420684560/562/566 | 01-190-25 |
| Maverick Max 1000 (all) | 14-15/18 | 420684560/562/566 | 01-190-25 |
| Maverick Max 1000R EFI | 2016 | 420684560/562/566 | 01-190-25 |
| Maverick Max 1000R | 17-18 | 420684560/562/566 | 01-190-25 |
| Maverick Sport 1000, 1000R | 2019 | 420684560/562/566 | 01-190-25 |
| Maverick Sport Max 1000R | 2019 | 420684560/562/566 | 01-190-25 |
| Maverick Trail 1000 EFI | 18-19 | 420684560/562/566 | 01-190-25 |
| Outlander 6x6 1000 EFI | 15-19 | 420684560/562/566 | 01-190-25 |
| Outlander 1000 EFI (all) | 12-19 | 420684560/562/566 | 01-190-25 |
| Outlander 1000R EFI (all) | 18-19 | 420684560/562/566 | 01-190-25 |
| Outlander Max 6x6 1000 EFI | 2019 | 420684560/562/566 | 01-190-25 |
| Outlander Max 1000 EFI (all) | 13-19 | 420684560/562/566 | 01-190-25 |
| Outlander Max 1000R EFI | 2019 | 420684560/562/566 | 01-190-25 |
| Outlander Max Pro 1000 EFI, 1000R EFI | 2017 | 420684560/562/566 | 01-190-25 |
| Renegade 1000, Xxc | 12-13 | 420684560/562/566 | 01-190-25 |
| Renegade 1000 EFI (all) | 12-15/18-19 | 420684560/562/566 | 01-190-25 |
| Renegade 1000R EFI | 16-18 | 420684560/562/566 | 01-190-25 |
| Traxter HD10 | 17-19 | 420684560/562/566 | 01-190-25 |
| Traxter Max HD10 | 17-18 | 420684560/562/566 | 01-190-25 |
| Traxter T HD10 | 2018 | 420684560/562/566 | 01-190-25 |
| Honda | | | |
| ATC 200 E, ES | 82-84 | 31200-958-405 | 01-1110-26 |
| ATC 200M | 84-85 | 31200-958-405 | 01-1110-26 |
| TRX 200A | 1984 | 31200-958-405 | 01-1110-26 |
| ATC 250ES | 85-86 | 31200-HA0-682 | 01-1110-24 |
| ATC 250ES | 1987 | 31200-HA0-774 | 01-1110-01 |
| ATC 250ES A | 1987 | 31200-HC4-033 | 01-1110-01 |
| ATC 250SX | 85-86 | 31200-HA0-682 | 01-1110-24 |
| ATC 250SX | 1987 | 31200-HA0-774 | 01-1110-01 |
| TRX 250A | 85-86 | 31200-HA0-682 | 01-1110-24 |
| TRX 250A | 1987 | 31200-HA0-774 | 01-1110-01 |
| TRX 250A | 1987 | 31200-HC4-033 | 01-1110-01 |
| TRX 300A/AC/AN | 88-00 | 31200-HC4-033 | 01-1110-01 |
| TRX 300FW A/AC/AN | 88/90-00 | 31200-HC4-033 | 01-1110-01 |
| TRX 350A | 1986 | 31200-HA7-315 | 01-1110-02 |
| TRX 350A | 1987 | 31200-HA7-773 | 01-1110-03 |
| TRX 350D A | 87-88 | 31200-HA7-773 | 01-1110-03 |
| TRX 350FE, FM, TE, TM (all) | 00-01/03-06 | 31200-HN-M01 | 01-1110-27 |
| TRX 400EX | 99-08 | 31200-HN1-000/31200-HN1-A41 | 01-1110-21 |
| TRX 400X | 09/12-14 | 31200-HN1-A41 | 01-1110-21 |
| TRX 500FA | 01-09/11-14 | 31200-HN2-003/A01 | 01-1110-01 |
| TRX 500FGA | 04-08 | 31200-HN2-A01 | 01-1110-01 |
| TRX 500FPA | 09/11-14 | 31200-HN2-A01 | 01-1110-01 |
| TRX 650FA | 03-05 | 31200-HN8-000/003 | 01-1110-04 |
| TRX 650FGA | 04-05 | 31200-HN8-000/003 | 01-1110-04 |
| TRX 680FA | 06-19 | 31200-HN8-000/003 | 01-1110-04 |
| TRX 680FGA | 06-09 | 31200-HN8-000/003 | 01-1110-04 |
| MUV 700 (all) | 09-13 | 31200-HN8-000/003 | 01-1110-04 |
| Pioneer 700 (SXS 700) | 14-19 | 31200-HN8-000/003 | 01-1110-04 |



ATV/UTV STARTERS

| Make/Model | Year | OE# | TCI Part # |
|--------------------------------|-------------|--|------------|
| Kawasaki | | | |
| KFX 80 | 03-06 | 21163-S003 | 01-1110-06 |
| KLF 400 | 93-95 | 21163-1208 | 01-1110-05 |
| KLF 400 Bayou | 96-99 | 21163-1208 | 01-1110-05 |
| KVF 400 Prairie | 97-02 | 21163-1208 | 01-1110-05 |
| KVF 650 Brute Force 4x4 / 4x4i | 05-13 | 21163-1320/0037 | 01-1110-07 |
| KVF 650 Prairie | 02-03 | 21163-1320/0037 | 01-1110-07 |
| KVF 700 Prairie | 04-06 | 21163-1320/0037 | 01-1110-07 |
| KFX 700 (KSV 700) | 04-09 | 21163-1320/0037 | 01-1110-07 |
| KRF 750 (all) | 10-11 | 21163-1320/0037 | 01-1110-07 |
| KVF 750 Brute Force 4x4i (all) | 05-19 | 21163-1320/0037 | 01-1110-07 |
| Teryx 750 4x4 (all) | 08-13 | 21163-1320/0037 | 01-1110-07 |
| Teryx 800 4x4 (all) | 14-19 | 21163-1320/0037 | 01-1110-07 |
| Polaris | | | |
| Outlaw 50 | 08-10/13-19 | 0453848 | 01-1110-18 |
| Predator 50 | 2007 | 0453848 | 01-1110-18 |
| Predator 50 | 04-06 | 0451805 | 01-1110-25 |
| Scrambler 50 | 01-03 | 0450532 | 01-1110-25 |
| Predator 90 | 03-06 | 0451692 | 01-1110-18 |
| Scrambler 90, 90X | 01-03 | 0451692 | 01-1110-18 |
| Sportsman 90 | 01-06 | 0451692 | 01-1110-18 |
| Big Boss 250 (all) | 89-92 | 3083760 | 01-1110-08 |
| Scrambler 250 | 85-86 | 3083646/760 | 01-1110-08 |
| Trail Blazer 250 (all) | 91/96-06 | 3085392/93/3084403/3083646/748/760/933 | 01-1110-08 |
| Trail Boss 250 (all) | 85-99 | 3085392/93/3084403/3083646/748/760/933 | 01-1110-08 |
| 300 (2x4, 4x4, 6x6) | 94-95 | 3084403 | 01-1110-08 |
| Xplorer 300 | 96-02 | 3085392/93/3084403/3083646/748/760/933 | 01-1110-08 |
| Xpress 300 | 96-99 | 3085392/93/3084403/3083646/748/760/933 | 01-1110-08 |
| Magnum 325 | 2000 | 3084981 | 01-1110-09 |
| Trail Boss 325 | 01-02 | 3084981 | 01-1110-09 |
| ATP 330 | 2005 | 3084981 | 01-1110-09 |
| Magnum 330 | 04-05 | 3084981 | 01-1110-09 |
| Trail Blazer 330 | 09-13 | 3090188 | 01-1110-09 |
| Trail Boss 330 | 05-13 | 3084981/3090188 | 01-1110-09 |
| Sportsman 335 | 99-00 | 3084981 | 01-1110-09 |
| Worker 335 | 1999 | 3084981 | 01-1110-09 |
| Trail Boss 350L (all) | 90-93 | 3083760/933/3084403 | 01-1110-08 |
| 400L (2x4, 4x4, 6x6) | 94-96 | 3084403 | 01-1110-08 |
| Big Boss 400L 6x6 | 95-97 | 3085392/93/3084403/3083646/748/760/933 | 01-1110-08 |
| Hawkeye 400 (all) | 11-12 | 3090188 | 01-1110-09 |
| Ranger 400 (all) | 09-14 | 3090188 | 01-1110-09 |
| Scrambler 400, 400L | 95-02 | 3085392/93/3084403/3083646/748/760/933 | 01-1110-08 |
| Sport 400L, 400 | 94-99 | 3085392/93/3084403/3083646/748/760/933 | 01-1110-08 |
| Sportsman 400, 400L | 93-97 | 3085392/93/3084403/3083646/748/760/933 | 01-1110-08 |
| Sportsman 400 (all) | 01-05/11-12 | 3084981 | 01-1110-09 |
| Trail Blazer 400 (all) | 2003 | 3085393/3084403/3083646/748/760/933 | 01-1110-08 |
| Xplorer 400, 400L | 95-02 | 3085392/93/3084403/3083646/748/760/933 | 01-1110-08 |
| Xpress 400 | 96-97 | 3085392/93/3084403/3083646/748/760/933 | 01-1110-08 |
| Magnum 425 (all) | 95-98 | 3084981 | 01-1110-09 |
| Ranger 425 (all) | 2004 | 3084981 | 01-1110-09 |
| ATP 500 | 2005 | 3084981 | 01-1110-09 |
| ATV Pro 500 | 2002 | 3084981 | 01-1110-09 |
| Big Boss 500 6x6 | 98-99 | 3084981 | 01-1110-09 |
| Magnum 500 | 99-00 | 3084981 | 01-1110-09 |
| Ranger 500 (all) | 09-13 | 3090188 | 01-1110-09 |
| Scrambler 500 (all) | 97-12 | 3084981/3090188 | 01-1110-09 |
| Sportsman 500 (all) | 96-12 | 3084981/3090188 | 01-1110-09 |



ATV/UTV STARTERS

| Make/Model | Year | OE# | TCI Part # |
|-------------------------------|----------------|--|------------|
| Polaris | | | |
| Sportsman Touring 500 | 09-12 | 3090188 | 01-1110-09 |
| Sportsman X2 500 EFI | 09- | 3090188 | 01-1110-09 |
| Worker 500 | 1999 | 3084981 | 01-1110-09 |
| Xplorer 500 | 1997 | 3084981 | 01-1110-09 |
| Sportsman 600 | 03-05 | 4010417 | 01-1110-17 |
| Ranger 700 (all) | 07-09 | 4010417/1584/2032 | 01-1110-17 |
| Ranger XP 700 | 05-06 | 4010417 | 01-1110-17 |
| Sportsman 700 (all) | 02-07 | 4010417/1584 | 01-1110-17 |
| Sportsman X2 700 EFI | 2008 | 4010417/1584/2032 | 01-1110-17 |
| Forest 800 6x6 | 2015 | 4013268 | 01-1110-17 |
| Ranger 800 (all) | 10-16 | 4012032/3268 | 01-1110-17 |
| Ranger XP 800 | 2012 | 4013268 | 01-1110-17 |
| RZR 800 EFI | 08-14 | 4010417 | 01-1110-17 |
| RZR 4 800 (all) | 10-14 | 4010417/3268 | 01-1110-17 |
| RZR S 800 (all) | 09-14 | 4010417/3268 | 01-1110-17 |
| Sportsman 800 EFI (all) | 05-14 | 4010417/1584/2032/3268 | 01-1110-17 |
| Sportsman Forest 800 | 13-14 | 4013268 | 01-1110-17 |
| Sportsman Touring 800 EFI | 08-09 | 4010417/1584/2032 | 01-1110-17 |
| Sportsman X2 800 EFI | 07-09 | 4010417/1584/2032 | 01-1110-17 |
| RZR 4 XP 900 (all) | 2012 | 4013059/4013245 | 01-1010-02 |
| RZR XP 900 (all) | 11-12 | 4013059/4013245 | 01-1010-02 |
| Series 10 PTV 4x4, 6x6 | | 3084981/3090188 | 01-1110-09 |
| Series 10 Ranger (all) | | 3084981/3090188 | 01-1110-09 |
| Series 10 UTV 2x4, 4x4 | | 3084981/3090188 | 01-1110-09 |
| Series 11 Ranger | | 3084981/3090188 | 01-1110-09 |
| Series 11 UTV | | 3084981/3090188 | 01-1110-09 |
| Suzuki | | | |
| LT 80 | 87-95 | 31100-40B00/B01 | 01-1110-06 |
| LT 80 QuadSport | 96-06 | 31100-40B00/B01 | 01-1110-06 |
| LT 160 Quadrunner | 03-04 | 3100-35B10/B11/31100-02C00/C01/C02/C10 | 01-1110-28 |
| LT 160E QuadRunner | 89-92 | 31100-02C00/C01/C10 | 01-1110-28 |
| LT-F 160 QuadRunner | 91-01 | 3100-35B10/B11/31100-02C00/C01/C02/C10 | 01-1110-28 |
| LT 230E QuadRunner | 87-93 | 31100-35B10/B11/3100-02C10 | 01-1110-28 |
| LT-F 250 | 2014 | 3100-35B10/B11/31100-02C00/C01/C02/C10 | 01-1110-28 |
| LT-F 250 King Quad | 2013 | 3100-35B10/B11/31100-02C00/C01/C02/C10 | 01-1110-28 |
| LT-F 250 Ozark | 02-09/12 | 3100-35B10/B11/31100-02C00/C01/C02/C10 | 01-1110-28 |
| LT-F 250F QuadRunner | 88-01 | 31100-19B00/B11/B12/B20 | 01-1110-10 |
| LT-F 250F QuadRunner 4WD | 99-02 | 31100-19B11/B12/20 | 01-1110-10 |
| LT-Z 250 QuadSport | 04-09 | 3100-35B10/B11/31100-02C00/C01/C02/C10 | 01-1110-28 |
| LT-4WD 300 QuadRunner | 87-98 | 31100-19B00/B11/B20 | 01-1110-10 |
| LT-F 4WDX King Quad 300 | 91-98 | 31100-19B00/B11B12//B20 | 01-1110-10 |
| LT-F 300F King Quad | 99-02 | 31100-19B20 | 01-1110-10 |
| LT 250EF | 85-86 | 31100-38300 | 01-1110-23 |
| LT 300E QuadRunner | 87-89 | 31100-41B00 | 01-1110-23 |
| LT-A 400/F Eiger Auto 2WD/4WD | 02-07 | 31100-38F00 | 01-1110-00 |
| LT-A 400/F King Quad | 08-10 | 31100-38F00 | 01-1110-00 |
| LT-F 400/F Eiger 2WD/4WD | 02-07 | 31100-38F00 | 01-1110-00 |
| LT-F 400 King Quad | 08-10 | 31100-38F00 | 01-1110-00 |
| LT-A 450X/XZ King Quad | 07-10 | 31100-11H00 | 01-1010-03 |
| LT-A 500X/XC/XP/XZ King Quad | 09/11-18 | 31100-11H00 | 01-1010-03 |
| LT-V 700F Twin Peaks | 04-05 | K2116-31320 | 01-1110-07 |
| Yamaha | | | |
| YFM 50 Raptor | 04-08 | 55X-81800-51-00 | 01-1110-12 |
| YFM 80 Badger | 85-86/88/92-01 | 55X-81800-51-00 | 01-1110-12 |
| YFM 80 Grizzly | 05-08 | 55X-81800-51-00 | 01-1110-12 |
| YFM 80 Raptor | 02-08 | 55X-81800-51-00 | 01-1110-12 |



ATV/UTV STARTERS

| Make/Model | Year | OE# | TCI Part # |
|----------------------------|-------------|---------------------------------------|------------|
| Yamaha | | | |
| YFA 100 Breeze (all) | 89/91-04 | 3FA-81800-01-00 | 01-1110-19 |
| YFM 100 Champ | 87-91 | 55X-81800-51-00 | 01-1110-12 |
| YFU 1 Pro Hauler | 1989 | 3JN-81800-01-00/59V-81890-00-00 | 01-1110-13 |
| YFM 125 Grizzly (all) | 04-13 | 3FA-81800-01-00/3FA-81890-00-00 | 01-1110-19 |
| YTM 200 Tri Moto | 83-85 | 29U-81800-61-00 | 01-1110-14 |
| YFM 225 Moto-4 | 86-88 | 59V-81800-00-00/59V-81890-00-00 | 01-1110-13 |
| YTM 225 Tri Moto | 83-86 | 29U-81800-61-00 | 01-1110-14 |
| YFM 200 Moto 4 | 85-89 | 29U-81800-61-00 | 01-1110-14 |
| YFB 250 Timberwolf (all) | 92-00 | 4BD-81800-00/01/02-00/4XE-81890-00-00 | 01-1110-14 |
| YFM 250 Bear Tracker (all) | 99-04 | 4XE-81800-00-00/4XE-81890-00-00 | 01-1110-14 |
| YFM 250 Big Bear (all) | 07-09 | 5XG-H1800-00-00 | 01-1110-13 |
| YFM 250 Bruin (all) | 05-06 | 5XG-H1800-00-00 | 01-1110-13 |
| YFM 250 Moto-4 | 89-91 | 3GH-81800-01-00/59V-81800/81890-00-00 | 01-1110-13 |
| YFM 350 Big Bear | 87-98 | 2HR-81800-51/52-00/1UY-81890-00-00 | 01-1110-11 |
| YFM 350 Big Bear 2WD/4WD | 97-99 | 4KB-81800-00-00/4KB-81890-00-00 | 01-1110-22 |
| YFM350 Moto-4 (all) | 87-90/92-95 | 1YW-81800-51-00/1UY-81890-00-00 | 01-1110-11 |
| YFM 350 Raptor (all) | 04-13 | 1UY-81890-00-00 | 01-1110-11 |
| YFM 350 Warrior (all) | 87-04 | 1UY-81800-51-00/1UY-81890-00-00 | 01-1110-11 |
| YFM 350 Wolverine (all) | 95-05 | 4KB-81800-00-00/4KB-81890-00-00 | 01-1110-22 |
| YFP 350 Terra Pro | 1988 | 1YW-81800-51-00/1UY-81890-00-00 | 01-1110-11 |
| YFM 400 Big Bear (all) | 00-12 | 4KB-81890-00-00 | 01-1110-22 |
| YFM 400 FWNN | 2001 | 4KB-81890-00-00 | 01-1110-22 |
| YFM 400 Grizzly (all) | 07-08 | 5KM-81890-00-00 | 01-1110-16 |
| YFM 400 Kodiak (all) | 93-98 | 2HR-81800-51/52-00/1UY-81890-00-00 | 01-1110-11 |
| YFM 400 Kodiak (all) | 1999 | 4KB-81800-00-00/4KB-81890-00-00 | 01-1110-22 |
| YFM 400 Kodiak (all) | 03-06 | 5KM-81890-00-00 | 01-1110-16 |
| YFM 450 Grizzly (all) | 07-10 | 5KM-81890-00-00 | 01-1110-16 |
| YFM 450 Kodiak (all) | 03-06/18-19 | 5KM-81890-00-00 | 01-1110-16 |
| YFZ 450 (all) | 04-09/12-13 | 5TG-81890-00-00 | 01-1010-04 |
| YXR 450 Rhino (all) | 06-09 | 5KM-81890-00-00 | 01-1110-16 |
| YXR 450 Wolverine (all) | 06-10 | 5KM-81890-00-00 | 01-1110-16 |
| YFM5 Grizzly 550 (all) | 09-14 | 28P81890-00-00 | 01-1010-05 |
| YFM 660 Grizzly (all) | 02-08 | 5KM-81890-00-00 | 01-1110-16 |
| YFM660 Raptor (all) | 01-05 | 3SX-81890-00-00 | 01-1110-15 |
| YXR 660 Rhino (all) | 04-07 | 5KM-81890-00-00 | 01-1110-16 |
| YFM7FG Grizzly 700 (all) | 07-08 | 1S3-81890-00-00 | 01-1110-16 |
| YFM7FG Grizzly 700 (all) | 09-19 | 28P-81890-00-00 | 01-1010-05 |
| YFM70 Kodiak 700 (all) | 16-17 | 28P-81890-00-00 | 01-1010-05 |
| YFM700 Raptor 700 (all) | 06-18 | 1S3-81890-00-00 | 01-1110-16 |
| YXE70 Wolverine 700 (all) | 16-18 | 2MB-H1890-00-00/1S3-81890-00-00 | 01-1110-16 |
| YXM700 Viking 700 (all) | 14-19 | 1S3-81890-00-00 | 01-1110-16 |
| YXR7 Rhino 700 (all) | 08-09/11-13 | 1S3-81890-00-00 | 01-1110-16 |



ATV/UTV STARTERS



01-190-25



01-1010-00



01-1010-01



01-1010-02



01-1010-03



01-1010-04



01-1010-05



01-1110-00



01-1110-01



01-1110-02



01-1110-03



01-1110-04



01-1110-05



01-1110-06



01-1110-07



01-1110-08



01-1110-09



01-1110-10



01-1110-11



01-1110-12



01-1110-13



01-1110-14



01-1110-15



01-1110-16



01-1110-17



01-1110-18



01-1110-19



01-1110-21



01-1110-22



01-1110-23



01-1110-24



01-1110-25



01-1110-26



01-1110-27



01-1110-28



ATV/UTV STARTER RELAY/SOLENOIDS

| Make/Model | Year | OE# | TCI Part # |
|---|-------------|-------------------------------|-------------|
| Arctic Cat | | | |
| 150 Utility | 09-18 | 3303-857 | 01-1112-01 |
| 250 DVX | 06-08 | 3303-857 | 01-1112-01 |
| 250 Utility | 06-09 | 3303-857 | 01-1112-01 |
| 300 DVX | 09/11-15 | 3303-857 | 01-1112-01 |
| 300 2x4 Utility | 10-16 | 3303-857 | 01-1112-01 |
| Alterra 300 | 17-18 | 3303-857 | 01-1112-01 |
| Can Am | | | |
| Outlander 400 EFI | 09-15 | 710001364 | 01-1112-04 |
| Outlander Max 400 EFI | 09-15 | 710001364 | 01-1112-04 |
| DS450 | 08-14 | 710001364 | 01-1112-04 |
| Outlander L 450 EFI | 2015 | 710001364 | 01-1112-04 |
| Outlander 500 EFI | 08-15 | 710001364 | 01-1112-04 |
| Outlander Max 500 EFI | 08-15 | 710001364 | 01-1112-04 |
| Renegade 500 EFI | 08-15 | 710001364 | 01-1112-04 |
| Outlander 650 EFI | 08-15 | 710001364 | 01-1112-04 |
| Outlander 6x6 650 EFI | 14-15 | 710001364 | 01-1112-04 |
| Commander 800 | 11-14 | 710001364 | 01-1112-04 |
| Outlander 800R EFI | 08-15 | 710001364 | 01-1112-04 |
| Outlander Max 800R EFI | 08-15 | 710001364 | 01-1112-04 |
| Renegade 800R EFI | 08-15 | 710001364 | 01-1112-04 |
| Commander 1000 | 11-14 | 710001364 | 01-1112-04 |
| Outlander 1000 (all EFI) | 12-15 | 710001364 | 01-1112-04 |
| Outlander 6x6 1000 EFI | 14-15 | 710001364 | 01-1112-04 |
| Maverick 1000 | 13-15 | 710001364 | 01-1112-04 |
| Renegade 1000 EFI | 12-15 | 710001364 | 01-1112-04 |
| Honda | | | |
| TRX 300 (all) | 88-00 | 35850-HC4-000 | 01-1112-01* |
| TRX 350 | 86-87 | 35850-HA7-670/771 | 01-1112-05 |
| TRX 350D | 87-89 | 35850-HA7-670/771 | 01-1112-05 |
| TRX 350FE/FM/TE/TM | 04-06 | 35850-HN7-003 | 01-1112-07 |
| TRX 400FA/FGA | 04-07 | 35850-HN7-003 | 01-1112-07 |
| TRX 400FW Fourtrax Foreman 4x4 | 95-03 | 35850-HM7-000 | 01-1112-06 |
| TRX 420FA/FE/FM | 15-19 | 35850-HN7-003 | 01-1112-07 |
| TRX 420TE | 15-16 | 35850-HN7-003 | 01-1112-07 |
| TRX 420TM | 15/18 | 35850-HN7-003 | 01-1112-07 |
| TRX450 S Fourtrax Foreman | 98-01 | 35850-HM7-000 | 01-1112-06 |
| TRX 500FA | 02-03 | 35850-HM7-000 | 01-1112-06 |
| TRX 500FA | 04-09/11-14 | 35850-HN2-A01 | 01-1112-07 |
| TRX 500FA Foreman Rubicon 4x4 | 01-03 | 35850-HM7-000 | 01-1112-06 |
| TRX 500FE | 05-09/11 | 35850-HN2-A01 | 01-1112-07 |
| TRX 500FGA | 04-08 | 35850-HN2-A01 | 01-1112-07 |
| TRX 500FM | 05-09/11 | 35850-HN2-A01 | 01-1112-07 |
| TRX 500FPA | 09/11-14 | 35850-HN2-A01 | 01-1112-07 |
| TRX 500FPE | 07-09/11 | 35850-HN2-A01 | 01-1112-07 |
| TRX500 FPM | 08-09/11 | 35850-HN2-A01 | 01-1112-07 |
| TRX 500TM | 05-06 | 35850-HN2-A01 | 01-1112-07 |
| Pioneer 700 | 14-19 | 35850-HN7-003 | 01-1112-07 |
| * 01-1112-01 is OEM type universal version E174 | | | |
| Polaris | | | |
| Predator 90 | 03-06 | 308211/5521/7196/4010930/1335 | 01-1112-02 |
| Sportsman 90 | 01-13 | 308211/5521/7196/4010930/1335 | 01-1112-02 |
| Big Boss 250 4x6 | 89-92 | 308211/5521/7196/4010930/1335 | 01-1112-02 |
| Big Boss 250 6x6 | 89-96 | 308211/5521/7196/4010930/1335 | 01-1112-02 |
| Trail Blazer 250 | 03-06 | 308211/5521/7196/4010930/1335 | 01-1112-02 |
| Xplorer 250 4x4 | 00-02 | 308211/5521/7196/4010930/1335 | 01-1112-02 |
| Big Boss 300 6x6 | 1994 | 308211/5521/7196/4010930/1335 | 01-1112-02 |



ATV/UTV STARTER RELAY/SOLENOIDS

| Make/Model | Year | OE# | TCI Part # |
|---------------------------------|-------------|-------------------------------|------------|
| Polaris | | | |
| Xplorer 300 4x4 | 96-99 | 308211/5521/7196/4010930/1335 | 01-1112-02 |
| Xpress 300 | 96-99 | 308211/5521/7196/4010930/1335 | 01-1112-02 |
| Magnum 325 2x4 | 00-02 | 308211/5521/7196/4010930/1335 | 01-1112-02 |
| Magnum 325 2x4 HDS | 00-02 | 308211/5521/7196/4010930/1335 | 01-1112-02 |
| Magnum 325 4x4 | 00-02 | 308211/5521/7196/4010930/1335 | 01-1112-02 |
| Magnum 325 4x4 Freedom | 2002 | 308211/5521/7196/4010930/1335 | 01-1112-02 |
| Magnum 325 4x4 HDS | 00-02 | 308211/5521/7196/4010930/1335 | 01-1112-02 |
| Magnum 325 4x4 HDS II | 2000 | 308211/5521/7196/4010930/1335 | 01-1112-02 |
| Trail Coss 325 | 00-02 | 308211/5521/7196/4010930/1335 | 01-1112-02 |
| Xpedition 325 4x4 | 03-06 | 308211/5521/7196/4010930/1335 | 01-1112-02 |
| Magnum 330 2x4 | 03-06 | 308211/5521/7196/4010930/1335 | 01-1112-02 |
| Magnum 330 4x4 HDS | 1999 | 308211/5521/7196/4010930/1335 | 01-1112-02 |
| Worker 335 4x4 | 1993 | 308211/5521/7196/4010930/1335 | 01-1112-02 |
| Big Boss 350L 2x4 | 1993 | 308211/5521/7196/4010930/1335 | 01-1112-02 |
| Sportsman 350L 4x4 | 90-93 | 308211/5521/7196/4010930/1335 | 01-1112-02 |
| Trail Boss 350L | 85-99 | 308211/5521/7196/4010930/1335 | 01-1112-02 |
| 400L 2x4 / 4x4 | 94-99 | 308211/5521/7196/4010930/1335 | 01-1112-02 |
| Big Boss 400L 6x6 | 93-97 | 308211/5521/7196/4010930/1335 | 01-1112-02 |
| Sport 400L | 94-05 | 308211/5521/7196/4010930/1335 | 01-1112-02 |
| Sportsman 400 4x4 | 08-13 | 308211/5521/7196/4010930/1335 | 01-1112-02 |
| Sportsman 400 HO 4x4 | 2003 | 308211/5521/7196/4010930/1335 | 01-1112-02 |
| Trail Blazer 400 | 95-052 | 308211/5521/7196/4010930/1335 | 01-1112-02 |
| Xplorer 400 4x4 | 96-97 | 308211/5521/7196/4010930/1335 | 01-1112-02 |
| Magnum 425 6x6 | 96-97 | 308211/5521/7196/4010930/1335 | 01-1112-02 |
| Ranger 425 2x4, Series 10 | 2003 | 308211/5521/7196/4010930/1335 | 01-1112-02 |
| Xpedition 425 | 00-02 | 308211/5521/7196/4010930/1335 | 01-1112-02 |
| Sportsmand 450 | 06-07 | 308211/5521/7196/4010930/1335 | 01-1112-02 |
| Big Boss 500 6x6 | 98-99 | 308211/5521/7196/4010930/1335 | 01-1112-02 |
| Outlaw 500 | 2006 | 308211/5521/7196/4010930/1335 | 01-1112-02 |
| Predator 500 | 03-07 | 308211/5521/7196/4010930/1335 | 01-1112-02 |
| Ranger 500 6x6 | 97-01 | 308211/5521/7196/4010930/1335 | 01-1112-02 |
| Scrambler 500 2x4 / 4x4 | 97-12 | 308211/5521/7196/4010930/1335 | 01-1112-02 |
| Sportsman 500 4x4 | 96-04 | 308211/5521/7196/4010930/1335 | 01-1112-02 |
| Sportsman 500 6x6 | 00-05 | 308211/5521/7196/4010930/1335 | 01-1112-02 |
| Worker 500 4x4 EBS | 1999 | 308211/5521/7196/4010930/1335 | 01-1112-02 |
| Xplorer 500 4x4 | 1997 | 308211/5521/7196/4010930/1335 | 01-1112-02 |
| Sportsman 700 (all) | 02-04 | 308211/5521/7196/4010930/1335 | 01-1112-02 |
| Diesel Super Utility | 01-02 | 308211/5521/7196/4010930/1335 | 01-1112-02 |
| Magnum 6x6 | 96-97 | 308211/5521/7196/4010930/1335 | 01-1112-02 |
| Personal Task Vehicle (PTV) 4x4 | 2003 | 308211/5521/7196/4010930/1335 | 01-1112-02 |
| Personal Task Vehicle (PTV) 6x6 | 2003 | 308211/5521/7196/4010930/1335 | 01-1112-02 |
| Ranger 2x4 | 01-04 | 308211/5521/7196/4010930/1335 | 01-1112-02 |
| Ranger 4x4 | 01-05 | 308211/5521/7196/4010930/1335 | 01-1112-02 |
| Ranger 6x6 | 98-05 | 308211/5521/7196/4010930/1335 | 01-1112-02 |
| Sportsman 6x6 | 00-06 | 308211/5521/7196/4010930/1335 | 01-1112-02 |
| Suzuki | | | |
| LT-Z50 Quadsport | 06-09 | 31800-40B01 | 01-1112-08 |
| LT-Z50 | 17-18 | 31800-40B01 | 01-1112-08 |
| LT 80 | 87-95 | 31800-40B01 | 01-1112-08 |
| LT 80 Quadsport | 96-06 | 31800-40B01 | 01-1112-08 |
| LT 125 Quadrunner | 83-87 | | 01-1112-08 |
| LT 160 Quadrunner | 89-92/03-04 | 31800-33400/30B00/49100 | 01-1112-08 |
| LT-F 160 Quadrunner | 91-01 | 31800-33400/30B00/49100 | 01-1112-08 |
| LT 185 Quadrunner | 84-87 | | 01-1112-08 |
| LT 230 Quadrunner | 85-93 | 31800-33400/30B00/49100 | 01-1112-08 |
| LT 230S Quadport | 85-02 | | 01-1112-08 |



ATV/UTV STARTER RELAY/SOLENOIDS

| Make/Model | Year | OE# | TCI Part # |
|-------------------------------|-------------|---------------------------|------------|
| Suzuki | | | |
| LT-F230 | 86-87 | 31800-33400/30B00/49100 | 01-1112-08 |
| LT 250EF | 85-86 | 31800-30B00/31800-49100 | 01-1112-08 |
| LT 250E Quadrunner | 85-86 | 31800-33400/31800-49100 | 01-1112-08 |
| LT 250R Quadracer | 85-92 | | 01-1112-08 |
| LT 250S QuadSport | 89-90 | | 01-1112-08 |
| LT-4WD Quadrunner 250 | 87-96 | 31800-33400/31800-49100 | 01-1112-08 |
| LT-F4WD Quadrunner 250 | 97-98 | 31800-33400/31800-49100 | 01-1112-08 |
| LT-F 250 Ozark | 02-09/12 | 31800-47E00 | 01-1112-08 |
| LT-F250 Quadrunner | 88-01 | 31800-33400/30B00/49100 | 01-1112-08 |
| LT-F250F Quadrunner | 99-02 | 31800-33400/31800-49100 | 01-1112-08 |
| LT-F250 | 2014 | 31800-47E00 | 01-1112-08 |
| LT-F250 King Quad | 2013 | 31800-47E00 | 01-1112-08 |
| LT-F4WDX King Quad 250 | 91-98 | 31800-33400/30B00/49100 | 01-1112-08 |
| LT-Z 250 QuadSport | 04-09 | 31800-47E00 | 01-1112-08 |
| LT 300E Quadrunner | 87-89 | 31800-33400/30B00/49100 | 01-1112-08 |
| LT-F 300F King Quad | 99-02 | 31800-33400/30B00/49100 | 01-1112-08 |
| LT-A 400 Eiger Auto 2WD | 02-04/06-07 | 31800-03G00 | 01-1112-08 |
| LT-A 400 King Quad | 08-09 | 31800-38G10 | 01-1112-08 |
| LT-A 400F | 14-18 | 31800-38G10 | 01-1112-08 |
| LT-A 400F Eiger Auto 4WD | 02-07 | 31800-03G00 | 01-1112-08 |
| LT-A 400F King Quad | 08-13 | 31800-38G10 | 01-1112-08 |
| LT-F 400 Eiger 2WD | 02-07 | 31800-03G00 | 01-1112-08 |
| LT-F 400 King Quad | 2008 | 31800-38G10 | 01-1112-08 |
| LT-F 400F | 14-18 | 31800-38G10 | 01-1112-08 |
| LT-F 400F Eiger 4WD | 02-07 | 31800-03G00 | 01-1112-08 |
| LT-F 400F King Quad | 08-13 | 31800-38G10 | 01-1112-08 |
| LT-Z 400 / LT-Z400Z | 12/14 | 31800-33H00 | 01-1112-08 |
| LT-Z 400/LT-Z400Z QuadSport | 03-09 | 31800-07G00/31800-33H00 | 01-1112-08 |
| LT-Z 400Z QuadSport | 2013 | 31800-33H00 | 01-1112-08 |
| LT-A 450X King Quad | 07-10 | 31800-41G00/31800-41G10 | 01-1112-08 |
| LT 500R Quadracer | 87-90 | | 01-1112-08 |
| LT-A500F Quadmaster | 00-01 | 31800-26E00 | 01-1112-08 |
| LT-A500F Vinson | 02-07 | 31800-03G00 | 01-1112-08 |
| LT-A500X (all) | 14-18 | 31800-41G00/31800-41G10 | 01-1112-08 |
| LT-A500X King Quad | 09/11-13 | 31800-41G00/31800-41G10 | 01-1112-08 |
| LT-F500F Quadrunner 4WD | 98-02 | 31800-26E00 | 01-1112-08 |
| LT-F500F Vinson 4WD | 03-07 | 31800-03G00 | 01-1112-08 |
| LT-A700X King Quad | 06-07 | 31800-41G00/31800-41G10 | 01-1112-08 |
| LT-A750X (all) | 14-18 | 31800-41G00/31800-41G10 | 01-1112-08 |
| LT-A750X King Quad | 08-09/11-13 | 31800-41G00/31800-41G10 | 01-1112-08 |
| Yamaha | | | |
| YFM250 Bear Tracker 2WD | 1999 | 4SV-81940-00/4SX-81940-12 | 01-1112-03 |
| YFM250 Bear Tracker 250 (all) | 00-04 | 4XE-81940-00/4XE-81940-12 | 01-1112-03 |
| YFM25 Big Bear 250 (all) | 07-09 | 4XE-81940-00/4XE-81940-12 | 01-1112-03 |
| YFM25/YFM250 Bruin 250 | 05-06 | 4XE-81940-00/4XE-81940-12 | 01-1112-03 |
| YFM35 Bruin 350 Auto (all) | 04-06 | 4SV-81940-00/4SX-81940-12 | 01-1112-03 |
| YFM35 Grizzly 350 (all) | 07-14 | 4SV-81940-00/4SX-81940-12 | 01-1112-03 |
| YFM35FXG Wolverine 350 | 1995 | 4BH-81940-00/4BH-81940-02 | 01-1112-03 |
| YFM35 Wolverine 350 2WD | 06-09 | 4XE-81940-00/4XE-81940-12 | 01-1112-03 |
| YFM400FWNN | 2001 | 4SV-81940-00/4SX-81940-12 | 01-1112-03 |
| YFM400 Big Bear 400 2WD | 00-04 | 4SV-81940-00/4SX-81940-12 | 01-1112-03 |
| YFM4 Grizzly 400 (all) | 07-08 | 4SV-81940-00/4SX-81940-12 | 01-1112-03 |
| YFM400 Kodiak 400 2WD | 00-04 | 4SV-81940-00/4SX-81940-12 | 01-1112-03 |
| YFM400F Big Bear 400 4WD | 01-11 | 4SV-81940-00/4SX-81940-12 | 01-1112-03 |
| YFM400F Kodiak 400 4WD | 00-06 | 4SV-81940-00/4SX-81940-12 | 01-1112-03 |
| YFM45 Grizzly 450 (all) | 07-14 | 4SV-81940-00/4SX-81940-12 | 01-1112-03 |



ATV/UTV STARTER RELAY/SOLENOIDS

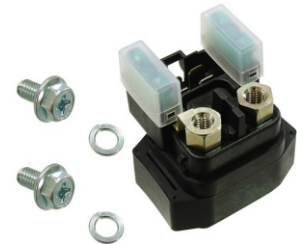
| Make/Model | Year | OE# | TCI Part # |
|--|-------|---------------------------|------------|
| Yamaha | | | |
| YFM450F Kodiak 450 4WD | 03-06 | 4SV-81940-00/4SX-81940-12 | 01-1112-03 |
| YFM45 Wolverine 450 (all) | 06-10 | 4SV-81940-00/4SX-81940-12 | 01-1112-03 |
| YXR45 Rhino 450 (all) | 2006 | 4SV-81940-00/4SX-81940-12 | 01-1112-03 |
| YFM66/YFM660 Grizzly 660 (all) | 02-08 | 4SV-81940-00/4SX-81940-12 | 01-1112-03 |
| YFM660R Raptor 660 | 01-05 | 4XE-81940-00/4XE-81940-12 | 01-1112-03 |
| YXR66 Rhino 660 (all) | 2006 | 4SV-81940-00/4SX-81940-12 | 01-1112-03 |
| Universal | | | |
| Universal Yamaha & Polaris ATV's with 12 Volt Applications | | | 01-1112-11 |
| Many Arctic Cat, Bombardier, Honda & Kawasaki Applications | | 35850-KV7-900 | 01-1112-10 |



01-1112-01



01-1112-02



01-1112-03



01-1112-04



01-1112-05



01-1112-06



01-1112-07



01-1112-08



01-1112-10



01-1112-11

HONDA PRIMARY IGNITION COIL

HONDA PRIMARY IGNITION COIL

E24-37800

No need to replace the entire engine ignition starter when normally only the coil goes bad!

- Replacement Ignition Coil fits Honda OEM stators 31120-958-003 and 31120-958-023

HONDA MODELS:

ATC110 '81-85

ATC185 and ATC185S '80-83

ATC200 '81-83

ATC200S '84-86



YAMAHA EXTERNAL COIL

YAMAHA EXTERNAL COIL

307-2042

- Replacement Ignition Coil fits Yamaha OEM 1 UY-82310-40/41, 3GD-82310-00-00, 3GD-82310-00-10, 21V-82310-40-00, 3JN-82310-00-00

YAMAHA MODELS:

YFM200 Moto 4 ('85-89)

YFM200 and YFM200E Tri-Moto ('83-85)

YFM225 Moto 4 ('86-88)

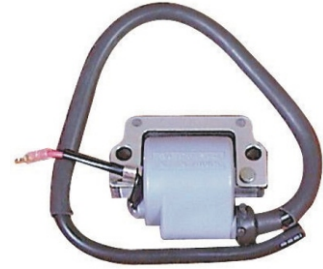
YFM225, YFM225DR, YFM225DX ('83-86)

YFM250 Moto-4 ('89-91)

YFM250 TimberWolf, YFB250 4x4 TimberWolf ('92-98)

YFM350FW Big Bear

YFM350U Big Bear ('87-97)



VOLTAGE REGULATORS

VOLTAGE REGULATOR

UNIVERSAL APPLICATIONS

DESCRIPTION

Heavy Duty 14.2 Volt / 200 Watts / 16 Amp

TCI PART #

307-4003

RETAIL

\$23.95-J



YAMAHA OEM 82F-81910-AO-00

APPLICATION

All Models 1976-87 (except 2 wire regulator)

TCI PART #

307-4004

RETAIL

\$54.95-J



FUSES

FUSES - PLUG-IN

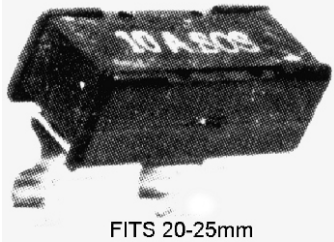


| AMP | COLOR | PART # |
|--------|--------|---------|
| 5 Amp | Orange | 366-105 |
| 8 Amp | Brown | 366-110 |
| 15 Amp | Blue | 366-115 |
| 20 Amp | Yellow | 366-120 |
| 25 Amp | Clear | 366-125 |
| 30 Amp | Green | 366-130 |

FUSES - GLASS



| AMP | LENGTH | PART # |
|--------|--------|----------|
| 7 Amp | 25 mm | 366-2507 |
| 10 Amp | 25 mm | 366-2510 |
| 15 Amp | 25 mm | 366-2515 |
| 20 Amp | 25 mm | 366-2520 |
| 25 Amp | 25 mm | 366-2525 |
| 30 Amp | 25 mm | 366-2530 |
| 5 Amp | 30 mm | 366-3005 |
| 7 Amp | 30 mm | 366-3007 |
| 10 Amp | 30 mm | 366-3010 |
| 15 Amp | 30 mm | 366-3015 |
| 20 Amp | 30 mm | 366-3020 |
| 25 Amp | 30 mm | 366-3025 |
| 30 Amp | 30 mm | 366-3030 |



FITS 20-25mm

CIRCUIT BREAKER

| AMP | PART # |
|---------|--------|
| 2.5 Amp | 375-20 |
| 5 Amp | 375-21 |
| 7.5 Amp | 375-22 |
| 10 Amp | 375-23 |

BULBS - HALOGEN HEAD LAMP

| Picture | Base | X-Ref | Volt | Watts/ Candle Power | Size | Notes | TCI # |
|--|-----------|---------------|------|---------------------------|--------------|------------------|--------------|
| A | BAY15D | GE-1157 | 12V | 50/15W | | Clear | 365-4828H |
| B | P15D-1 | | 12V | 35/35W | 47 x 19 mm | Clear | 365-3605 |
| C | P20D | HB3 9005 | 12V | 65W | | 90° Base - Clear | 365-9005 |
| D | P29T | HB1 (H6) 9004 | 12V | 65/45W | | Clear | 365-9004 |
| | P29T | HB1 (H6) 9004 | 12V | 65/45W | | Hyper White | 365-90042 |
| | P29T | HB1 (H6) 9004 | 12V | 100/55W | | Blue | 365-6060 |
| | P29T | HB1 (H6) 9004 | 12V | 100/55W | | Clear | 365-90041 |
| | P29T | HB5 9007 | 12V | 65/55W | | Hyper White | 365-90072 |
| | P29T | HB5 9007 | 12V | 100/55W | | Hyper White | 365-90073 |
| ** Fits Arctic Cat OE 0609-155 & 0609-171 | | | | | | | |
| E | PK22S | H3 | 12V | 55W | | Clear | E48-67730 |
| F | P43T (SA) | H4 | 12V | 60/55W | | Clear | 365-6055 |
| | P43T (SA) | H4 | 12V | 60/55W | | Hyper White | 365-6053 |
| | P43T (SA) | H4 | 12V | 60/55W | | Blue | 365-6057 |
| | P43T (SA) | H4 | 12V | 100/55W | | Clear | 365-6059 |
| | P43T (SA) | H4 | 12V | 100/55W | | Blue | 365-6058 |
| | P43T (SA) | H4 | 12V | 100/80W | | Clear | 365-6280HSA |
| | P43T (SA) | H4 | 12V | 100/80W | | Hyper White | 365-6054 |
| | P43T (SA) | H4 | 12V | 130/90W | | Clear | 365-6056 |
| ** Fits Arctic Cat OE 0109-724 & 0109-735 / Polaris OE 4030028 & 4030048 / Bombardier OE 410.504.401 / Yamaha OE 8G9-84314.00 & 5V2.84314.00 | | | | | | | |
| G | P45T (BT) | H4 | 12V | 60/55W | | Clear | 365-6260HBA |
| | P45T (BT) | H4 | 12V | 100/55W | | Clear | 365-62100HBA |
| | P45T (BT) | H4 | 12V | 100/80W | | Clear | 365-6285HBA |
| | P45T (BT) | H4 | 12V | 100/80W | | Hyper White | 365-62852 |
| ** Fits Bombardier OE 410.503.700 & 410.503.800 | | | | | | | |
| H | PG13 | GE-885 | 12V | 50W | | Clear | 365-885 |
| ** Fits center bulb on the Arctic Cat ZR & ZRT Chassis '98-02 | | | | | | | |
| I | PGJ13 | GE-894 | 12V | 37.5W | 57 x 15 mm | 90° Base - Clear | 365-894 |
| ** Fits Polaris New Generation Evolved '94-02, Polaris OE 4030046 & more ** Fits Arctic Cat OE 0609-252 & outside 2 bulbs on the Arctic Cat ZR Chassis '98-06 | | | | | | | |
| J | PGJ19-2 | H11 | 12V | 55W | | Clear | 365-0110 |
| K | PX26D | H7 | 12V | 55W | 58 x 10.5 mm | Hyper White | 365-7050 |
| | PX26D | H7 | 12V | 100W | 58 x 10.5 mm | Hyper White | 365-7060 |



**BAY15D (GE-1157)
Double Contact**



**P15D-1
Double Contact**



**PK22S (H3)
E48-67730**



**P20D
2 Prong / 90 Base**



**P29T
3 Prong / Straight Base**



**P43T
3 Prong (SA Type)**



**P45T
3 Prong (BT Type)**



**PG13 (GE 885)
2 Prong / Straight Base**



**PGJ13 (GE894)
2 Prong /
90 Base**



**PX26D
2 Prong**

| Picture | Base | X-Ref | Volt | Watts/ Candle Power | Size | Notes | TCI # |
|---------|-------------|-------------|----------|---------------------------|------------|----------------|------------|
| A | BA20D (B) | 4105019 | 12V | 35/35W | | | 365-6235B |
| | BA20D (B) | | 12V | 45/40W | | | 365-6240B |
| | BA20D (B) | 4105024 | 12V | 45/45W | | | 365-6245B |
| | BA20D (B) | 4105025 | 12V | 60/60W | | | 365-6260B |
| B | BA20S (B) | 4105017 | 12-13.5V | 35W | | | 365-635B |
| | BA20S (B) | 7301A7277 | 12V | 45W | | | 365-645B |
| | BA20S (B) | 4105018 | 12-13.5V | 60W | | | 365-660B |
| C | P15D-1 | | 6V | 15/15W | 47 x 19 mm | Mini Trail and | 365-3598H |
| | P15D-1 | | 6V | 25/25W | 47 x 19 mm | ATC style | 365-3625 |
| | P15D-1 | | 12V | 25/25W | 47 x 19 mm | Front | 365-3603 |
| | P15D-1 | | 12V | 35/35W | 47 x 19 mm | Headlight | 365-3604 |
| D | P15D-3 (J) | | 12V | 35/25W | | 3 pin | 365-7025 |
| | P15D-3 (J) | A7027 | 12V | 35/35W | | 3 pin | 365-6235J |
| | P15D-3 (J) | A7028S | 12V | 45/45W | | 3 pin | 365-6245J |
| | P15D-3 (J) | A7030 | 12V | 60/60W | | 3 pin | 365-6260J |
| E | P15D-30 (Y) | A5677 | 12V | 35/35W | | 3 holes | 365-6235Y |
| | P15D-30 (Y) | | 6V | 35/35W | | 3 holes | 365-5659 |
| F | P15S-3 (J) | A7041 | 12V | 25W | | 3 pin | 365-625J |
| | P15S-3 (J) | A7043 | 12V | 35W | | 3 pin | 365-635J |
| | P15S-3 (J) | A7045 | 12V | 45W | | 3 pin | 365-645J |
| | P15S-3 (J) | A7048 | 12V | 60W | | 3 pin | 365-660J |
| G | P36T (S) | A5980 | 12V | 45/45W | | | 365-6245S |
| | P36T (S) | A5987/A5989 | 12V | 60/60W | | | 365-6260S |
| H | P43T (SA) | A5988 | 12V | 60/60W | | | 365-6260SA |
| I | P45T (BT) | 4105035 | 12V | 45/45W | | | 365-6245BA |
| | P45T (BT) | 4105036 | 12V | 60/60W | | | 365-6260BA |



**BA20D
Double Contact (B Type)**



**Base BA20S
Single Contact (B Type)**



**P15D-1
Double Contact**



**P15D-3
Double Contact (J Type)**



**P15D-30
Double Contact (Y Type)**



**P15S-3
Single Contact (J Type)**



**P36T
Double Contact (S Type)**



**P43T
Double Contact (SA Type)**



**P45T
Double Contact (BT Type)**

BULBS

| Picture | Base | X-Ref | Volt | Watts/ Candle Power | Size | Notes | TCI # |
|----------|-------------|-----------|------|---------------------------|---------------|-------------------------------|-----------------|
| A | 15.5X44 | Fuse Type | 6V | 15W | 31 x 10 mm | Signal & Tail | 365-1437 |
| B | Wedge (T5) | R5 | 12V | 1.2W | | | 365-1702 |
| | Wedge (T10) | | 12V | 3.7W/2CP | 26 x 10 mm | Clear | 365-194 |
| | Wedge (T10) | GE-906 | 12V | 5W | 26 x 10 mm | Blue Coated | 365-3384 |
| C | BA15S | | 6V | 21CP | 50 x 18 mm | Signal & Marker | 365-4513 |
| | BA15S | | 6V | 8W | 36.5 x 18 mm | Signal & Tail | 365-4115 |
| | BA15S | | 12V | 4CP | 34 x 18 mm | Signal & Tail | 365-67 |
| | BA15S | | 12V | 5W | 34 x 18 mm | Signal & Tail | 365-304 |
| | BA15S | | 12V | 10W | 34 x 18 mm | Signal & Tail | 365-306 |
| | BA15S | | 12V | 23W | 34 mm - Clear | Signal & Marker | E48-66723 |
| | BA15S | | 12V | 23W | 34 mm - Amber | Signal & Marker | E48-66724 |
| | BA15S | 1073 | 12V | 32CP | 50 x 18 mm | Signal & Marker | 365-4527 |
| D | BA7S | | 12V | 2W | 21 x 6.5 mm | Speedo/Tach | 365-1272H |
| E | BA9S | | 6V | 1.5W | | Instrument | 365-61 |
| | BA9S | | 6V | 3W | 23.8 x 11 mm | Instrument Speedo/Tach | 365-62 |
| | BA9S | | 12V | 23W | | Fits Emgo Deco Lights - Clear | E48-63524 |
| | BA9S | | 12V | 2CP | 27 x 15 mm | Tail Light | 365-1895 |
| | BA9S | | 12V | 3W | 23.8 x 11 mm | Instrument Speedo/Tach | 365-72 |
| F | BA15D | | 12V | 4CP | 34 x 18 mm | Signal & Tail | 365-68 |
| | BA15D | 90 | 12V | 7.5W | 34 x 18 mm | Signal & Tail | 365-314 |
| | BA15D | 90 | 12V | 18/6 | 34 x 18 mm | Signal & Tail | 747-05196 |
| | BA15D | 1176 | 12V | 21/6CP | 50 x 18 mm | Signal & Tail | 365-4724 |
| | BA15D | | 12V | 21/6CP | 34 x 18 mm | Amber Bullet/Marker | 365-4725 |
| | BA15D | 1157 | 12V | Led Bright Clear | 42 x 25 mm | Tail Light | 365-48281* |
| | BA15D | 1157 | 12V | LED Bright Red | 42 x 25 mm | Tail Light | 365-48282* |
| G | BAY15D | | 6V | 17/5.3W | 50 x 25 mm | Signal & Tail | 365-4813J |
| | BAY15D | 1154 | 6V | 21/3CP | 50 x 25 mm | Signal & Tail | 365-4813 |
| | BAY15D | | 12V | 21/5W | 50 x 25 mm | Signal & Tail | 365-3381 |
| | BAY15D | 1157 | 12V | 32/3CP | 50 x 25 mm | Signal & Tail | 365-4828 |



Base BA15S
Single Contact



Base BA15D
Double Contact



Base BA15D
Single Contact LED



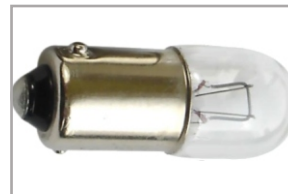
Base 15.5X44



Wedge (T10)



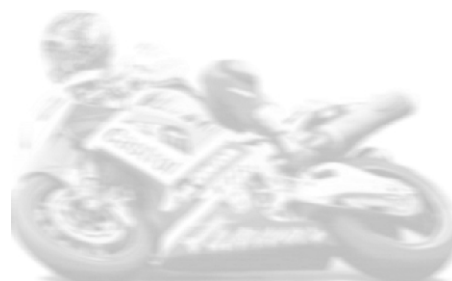
Base BA7S
Single Contact



Base BA9S
Single Contact



Base BAY15D
Double Contact



REPLACEMENT BULBS - SNOWMOBILE APPLICATIONS

| MODEL | YEAR | HL #1 | NOTES | HL #2 | NOTES |
|------------------------|-------|-------------------|------------|-----------|-----------|
| YAMAHA | | | | | |
| V-MAX 600 (all) | 94-03 | H4 | High & Low | | P45T Base |
| VMAX 600 ER | 2002 | H4 | High & Low | | P43T Base |
| V-MAX 700 (all) | 97-02 | H4 | High & Low | | P43T Base |
| V-MAX 700 (all) | 97-02 | H4 | High & Low | | P45T Base |
| VMX540 V-MAX | 83-87 | H4 | High & Low | | P43T Base |
| VMX540 V-MAX | 83-87 | H4 | High & Low | | P45T Base |
| VT480 Venture TR | 97-98 | H4 | High & Low | | P45T Base |
| VT480 Venture XL/GT/TR | 91-97 | H4 | High & Low | | P43T Base |
| VT480GTT Venture GT | 91-93 | H4 | High & Low | | P45T Base |
| VT500 Venture 500/600 | 97-98 | H4 | High & Low | | P45T Base |
| VX700SXA V-MAX 700 SX | 97-98 | H4 | High & Low | | P43T Base |
| VX750 V-MAX 4 | 92-94 | H4 | High & Low | | P43T Base |
| VX750 V-MAX 4 | 93-94 | H4 <td High & Low | | P45T Base | |
| XL540 Excel V | 85-90 | H4 | High & Low | | P45T Base |



BULB CARRIER & SPARK PLUG CADDY 360-1130

HOLDS:

- Two tail light bulbs
- One headlight bulb
- Two spark plugs (14/18 mm)(plugs and bulbs not included)
- Space for cable/wire
- Plastic case for safe storage of any 14 mm or 18 mm plugs



RIVET MOUNT PLUG HOLDER 360-1150

- Holds 2 plugs



RIVET MOUNT PLUG HOLDER 360-1151

- Holds 3 plugs



NGK SPARK PLUG CADDY BOX 355-9801

- Holds up to 4 plugs
- 4 1/2" long x 4" wide x 1" deep



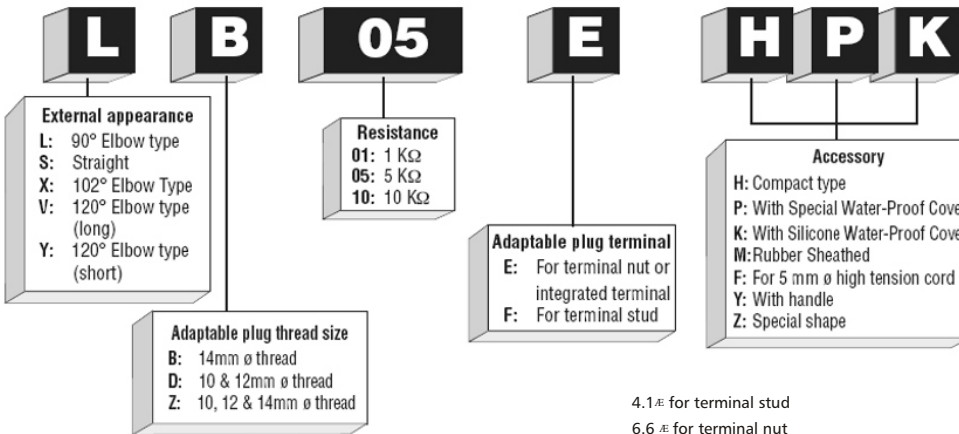
SPARK PLUG PROTECTOR 5 PK. 360-0155

- Spark Plug Bra - fits 14 mm spark plug.
- Black Rubber

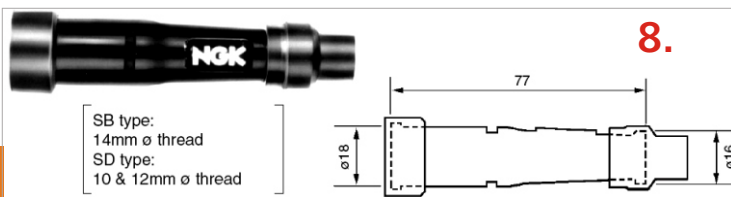
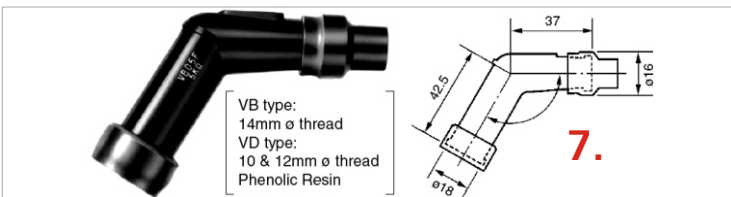
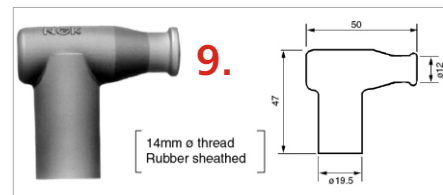
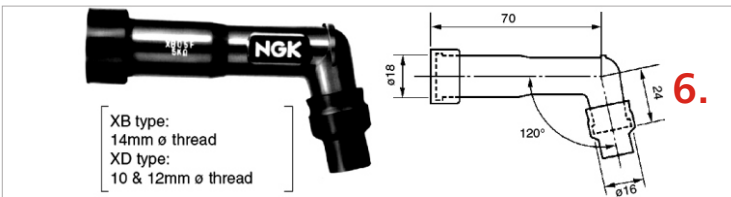
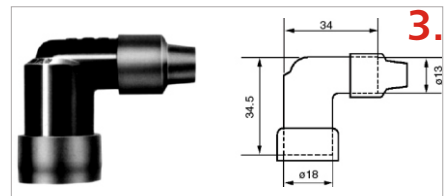
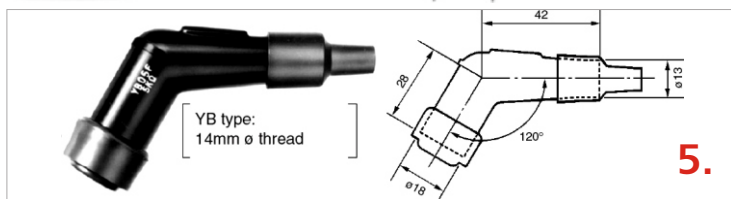
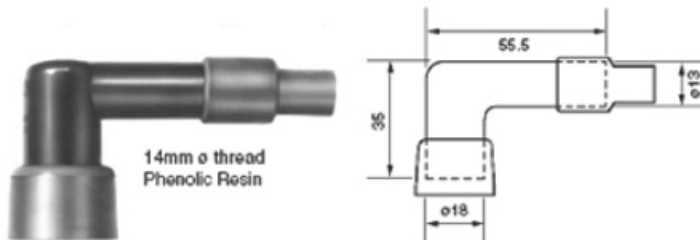
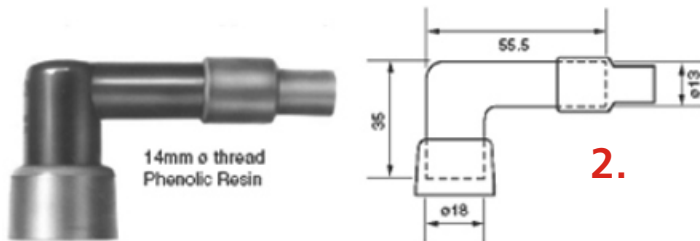
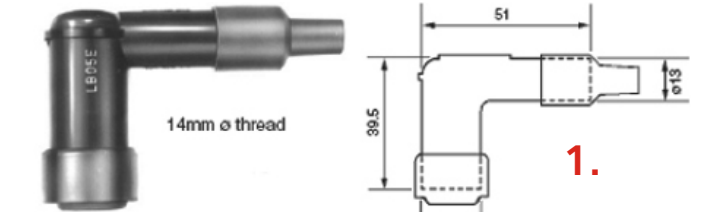




NGK SPARK PLUG PART NUMBER KEY



4.1.Æ for terminal stud
6.6.Æ for terminal nut



| FIGURE | REF # | TCI # | RETAIL |
|--------|---------|----------|-----------|
| 1. | LB05EP | 355-1001 | \$ 5.95-J |
| 1. | LD05FP | 355-1004 | \$ 5.95-J |
| 2. | LB05FP | 355-1003 | \$ 5.95-J |
| 2. | LB05EZ | 355-1002 | \$ 5.95-J |
| 3. | LZFH | 355-1005 | \$ 2.95-J |
| 5. | YB05FP | 355-1012 | \$ 7.75-J |
| 6. | XB05FP | 355-1013 | \$ 7.75-J |
| 6. | XD05FP | 355-1014 | \$ 7.75-J |
| 7. | VB05FP | 355-1010 | \$ 7.75-J |
| 7. | VD05FP | 355-1011 | \$ 7.75-J |
| 8. | SB05FP | 355-1006 | \$ 6.95-J |
| 8. | SD005FP | 355-1007 | \$ 6.95-J |
| 9. | TB05EM | 355-1008 | \$13.95-J |
| 9. | TB05EMA | 355-1009 | \$13.95-J |



For NGK Spark Plug applications please refer to our web site at:
www.transcanimports.com,
 select the Motorcycle catalog option and proceed to Sections and select NGK Spark Plug Catalogue

NGK RACING CABLE

With an outer insulator of rugged high performance silicone, and an inner core of solid copper wire strands, these new racing wire sets from NGK will help you get to the winner's circle. Connected with NGK resistor covers in either straight or 90° configurations, these wires will fit most applications for snowmobiles, watercraft, motorcycles and karts. The resistor cover comes equipped with a 5k ohm ceramic resistor for excellent defense against RFI (radio frequency interference) which can disrupt electronic ignition performance and lead to misfire.



| NGK # | DESCRIPTION | TERMINAL | LENGTH | TCI # |
|----------|-------------|------------|--------|----------|
| CR1 8035 | Straight | Threaded | 50 cm | 355-1032 |
| CR2 8048 | Elbow | Threaded | 50 cm | 355-1033 |
| CR3 8089 | Straight | Solid Post | 50 cm | 355-1034 |
| CR4 8054 | Elbow | Solid Post | 50 cm | 355-1031 |

SPARK PLUG CAPS

90° SPARK PLUG CAP WITH RESISTOR

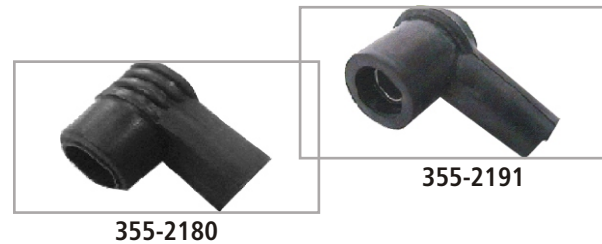
- Replica NGK TB05EMA
- 0K resistance

| TCI PART# | DESCRIPTION | TCI PART# | DESCRIPTION |
|-----------|-------------|-----------|-------------|
| 355-3007 | Green | 355-3044 | Purple |
| 355-3022 | Orange | 355-3055 | Blue |
| 355-3033 | Red | 355-3099 | Black |



SPARK PLUG CAP

| DESCRIPTION | TYPE | TCI PART # |
|-------------|----------------|------------|
| Rubber Cap | Built-in Screw | 355-2180 |
| Rubber Cap | Built-in Screw | 355-2191 |



SPARK PLUG WIRE

SPARK PLUG WIRE

355-9114

- Universal
- 7 mm diameter
- 20 strand copper wire
- 30 metre roll





NGK TUNE-UP KIT

355-2000

Due to today's high performance engines, we require higher output ignition wires. Together with NGK, TCI has come up with an affordable upgrade for stock machines.

Kit includes:

- 2 Race Cables
- 2 Splicers
- 4 BR9EYA Spark Plugs
- 1 Spark Plug Caddy (holds 4 spark plugs)
- 1 NGK 4" Decal



NGK SPARK PLUG CADDY BOX

355-9801

- Holds up to 4 plugs
- 4 1/2" long x 4" wide x 1" deep



SPARK PLUG PROTECTOR 5 PK.

360-0155

- Spark Plug Bra - fits 14 mm spark plug.
- Black Rubber



BATTERIES

Best

GYZ Series – The Next Generation in Powersports Batteries

- AGM separators with superior grid designs for extreme vibration resistance
- More active material surface area for enhanced performance and power
- Longer shelf life and improved life cycle performance
- Additional Amp hours for more accessories
- Supplied "Factory Activated" (nonspillable)



High Performance / AGM

- All the features of a standard AGM battery plus increased power
- H Series: Increased Power - up to 30% more cranking amps
- YZ Series: Small size, lightweight, huge power

Better

AGM

- Maintenance Free. No need to add water but periodic charging required when not in use
- Absorbed Glass Mat (AGM) Separators – an advanced battery technology that eliminates the need to ever add water
- Advanced lead-calcium technology – holds its specific gravity more than 3 times longer than conventional lead antimony batteries



Good

YuMicron / Conventional

- Special thin separators – allow two extra plates per cell to be installed, for a 30% improvement in cranking performance
- Engineered to protect against corrosion, withstand vibration, and deliver high cranking power
- 6 Volt and 12 Volt

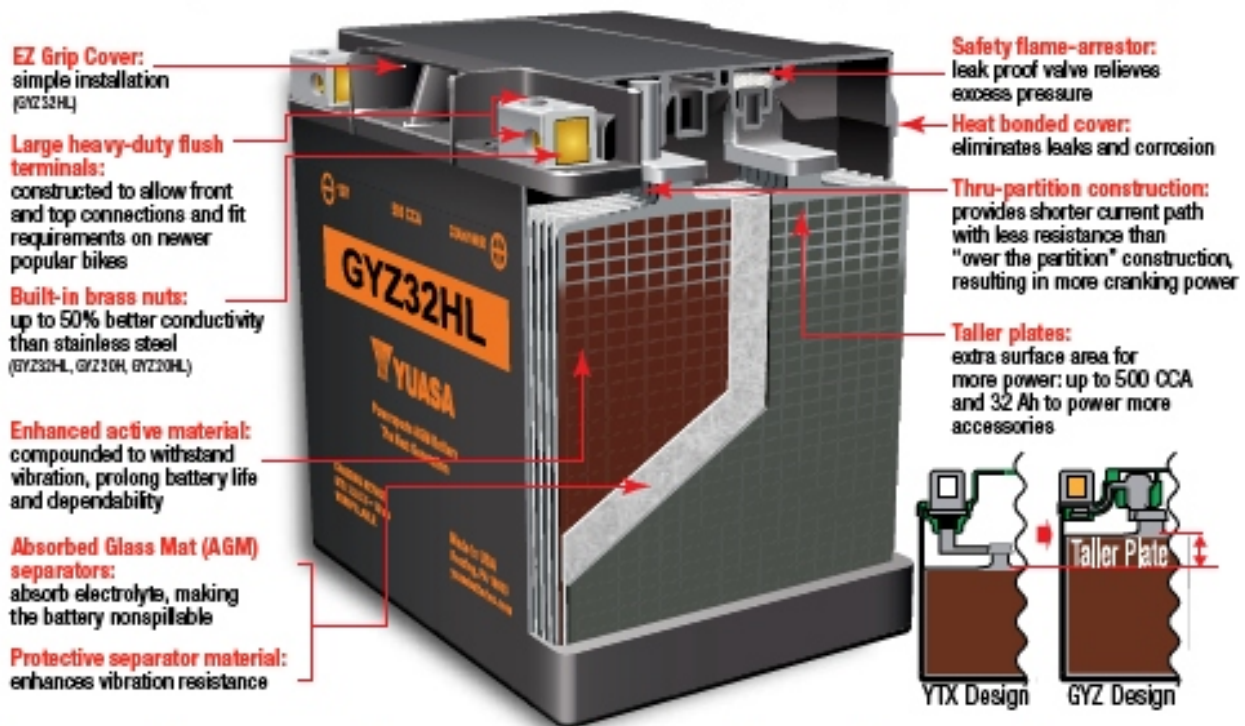




GYZ Series – The Industry's Most Powerful Family of Batteries

- Highest CCA motorcycle battery (500 CCA* 0N GYZ32HL)
 - Large heavy-duty flush terminals with multiple connections (GYZ32HL, GYZ20HL, GYZ20H)
 - Built in brass nuts (GYZ32HL, GYZ20H, GYZ20HL)
- * CCA at 0F (-18C) per BCI testing protocol

Yuasa's GYZ family of batteries are made with advanced engineering, premium quality and unmatched reliability.

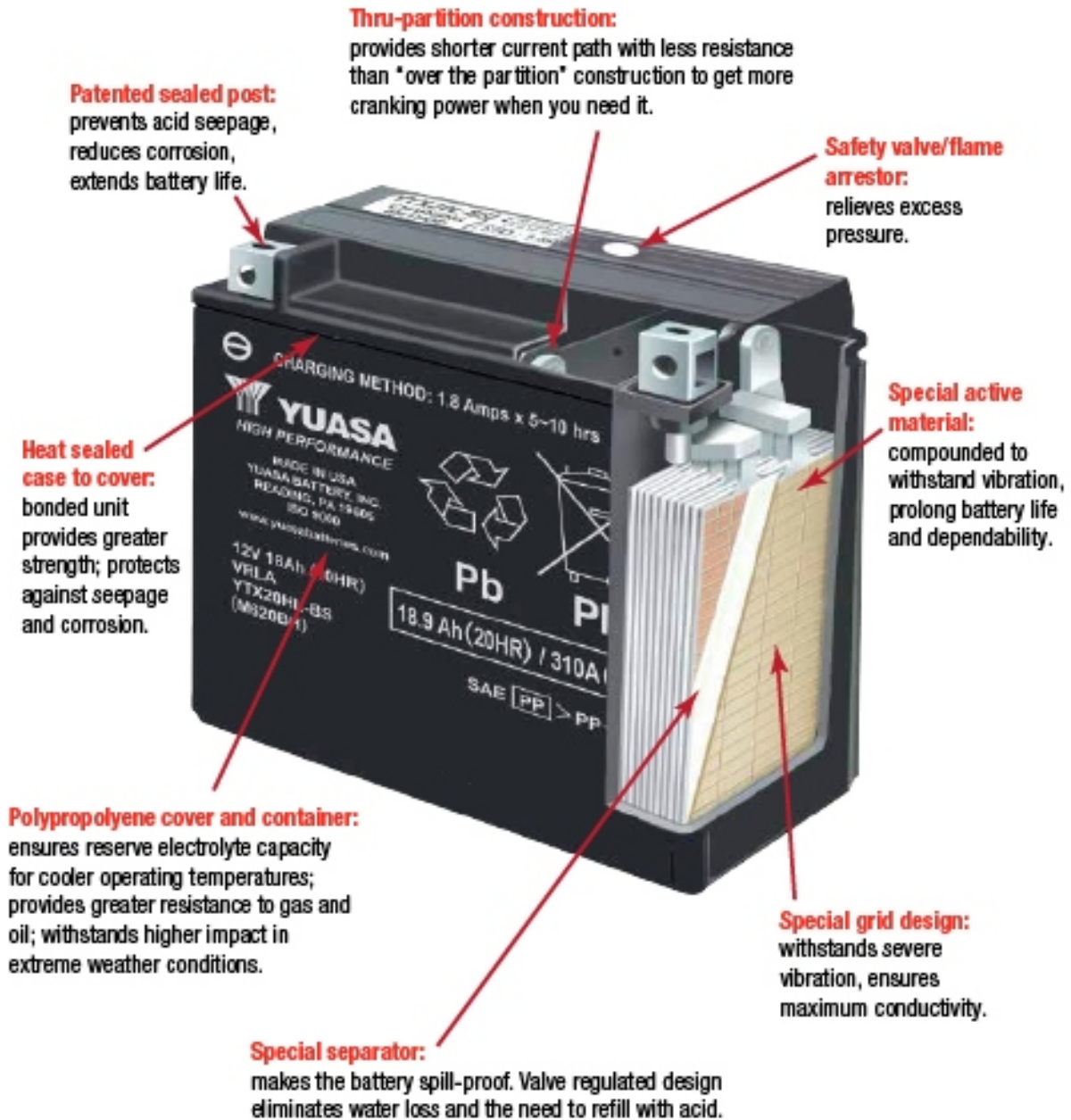


| GYZ | Capacity (Ah) | CCA* | V-Twin | Metric | ATV | Upgrade for: |
|---|---------------|------|--------|--------|-----|--------------|
| All GYZ exceed OE CCA and Amp hour requirements | | | | | | |
| GYZ16H | 16 | 240 | | | | YTX14 |
| GYZ16HL | 16 | 240 | | | | YTX14L |
| GYZ20L | 20 | 250 | | | | YTX20L |
| GYZ20H | 20 | 320 | | | | YTX20H |
| GYZ20HL | 20 | 320 | | | | YTX20HL |
| GYZ32HL | 32 | 500 | | | | YIX30L |

*CCA measured by BCI/SAE standard at 0°F.

BATTERIES

AGM Cutaway Diagram





BATTERIES

FEATURES AND BENEFITS

| Component | Features | Benefits |
|-------------------------------------|--|---|
| Cast Grid | Special Grid Design | Severe vibration resistance & improved conductivity |
| Active Material | Proprietary Formulation | Reduced shedding, maximum utilization & long service life |
| Pasted Plates | Specified Thickness & Weight | Ensures vibration resistance through precise compression & proper service life through specified active material balance |
| Dried-Charged Plates | Tank Formed & Dried Plates | Properly dried plates in a sealed battery have a virtually limitless shelf-life, while still retaining 70-80% state of charge when initially filled with acid |
| Top Lead Connections | Through-Partition Construction, Large Straps | Shorter current path for increased electrical conductivity & higher starting currents, heavier parts for maximum durability |
| Case-Cover Seal | Thermal Bonded Plastic | Air tight seal to prevent air ingress & acid seepage |
| Terminal-Cover Seal | Patented Poly-Seal Terminal | Eliminates acid seepage, reduces corrosion & extends battery life |
| Case & Cover | Polypropylene | Superior resistance to gasoline & oil, impact resistant in extreme weather conditions |
| Additive | Sulfate Stop (Some models) | Sulfate stop added to reduce the solubility of lead into the acid, which then reduces battery sulfation potential |
| YuMicron | | |
| Separator | Leaf or Envelope Separator | Polyethylene with glass mat sheet bonded for compression to withstand severe vibration conditions |
| GYZ/YTX/High Performance AGM | | |
| Separator | AGM (Absorbed Glass Mat) | High puncture resistant separator for increased service in high vibration applications |
| Top Lead Alloy | Calcium Alloy | Increased weld strength & severe vibration resistance |
| Vent System | Valve & Flame Arrestor | Valve relieves excess pressure to prevent bursting, flame arrestor frit prevents internal combustion |

BATTERY TERMINAL CHART

DESIGNATION OF BATTERY TYPE NUMBERS

Conventional
12 N 12A-4 A-1
 1 2 3 4 5 6

- 1 Nominal voltage
- 2 Conventional battery
- 3 Size of battery case
- 4 Polarity location
- 5 Exhaust location
- 6 Designates unique terminal

High Performance Conventional
YB 16A L-A2
 1 2 3 4

- 1 High Performance Conventional battery
- 2 Size of battery case
- 3 Polarity location
- 4 Terminal and Exhaust location

AGM
YTX 14 A H L-BS-1
 1 2 3 4 5 6 7

- 1 High Performance AGM (YTX, YIX, YTZ, YT, GYZ)
- 2 Performance classification
- 3 Designates unique battery case size
- 4 Higher CCA
- 5 Polarity location
- 6 Bottle supplied electrolyte
- 7 Designates unique terminal



BATTERY SPECIFICATIONS

Best

BATTERY SPECIFICATIONS

AGM, High Performance

Factory Activated (Non-Spillable)

12 VOLT

| Battery Type | Capacity AH (10Hr) | Dimensions - Inches (± 1/16 in) | | | Dimensions - Millimeters (± 2 mm) | | | Assembly Figure (As Per Cover Polarity) | Approx Weight with Acid (lbs.) | Terminal Type (Refer to page 6) | Acid Volume (Liter) | Regular Charge Current (Amp) | CCA @ 0°F (-18°C) |
|--------------|--------------------|---------------------------------|--------|---------|-----------------------------------|-----|------|---|--------------------------------|---------------------------------|---------------------|------------------------------|-------------------|
| | | L | W | H | L | W | H | | | | | | |
| YT216H | 16 | 6 | 3 7/16 | 5 3/4 | 158 | 87 | 146 | | 12.4 | 5 | NA | 1.8 | 240 |
| YT216HL | 16 | 6 | 3 7/16 | 5 3/4 | 158 | 87 | 146 | | 12.4 | 5 | NA | 1.8 | 240 |
| YT220L | 20 | 6 7/8 | 3 7/16 | 6 1/8 | 175 | 87 | 155 | | 15.2 | 4 | NA | 2.8 | 250 |
| YT220H | 20 | 6 7/8 | 3 7/16 | 6 1/8 | 175 | 87 | 155 | | 15.7 | 14 | NA | 2.8 | 220 |
| YT220HL | 20 | 6 7/8 | 3 7/16 | 6 1/8 | 175 | 87 | 155 | | 15.7 | 14 | NA | 2.8 | 220 |
| YT228HL | 32 | 6 9/16 | 5 | 6 7/8 | 168 | 126 | 175 | | 24.7 | 14 | NA | 3.2 | 300 |
| YT314M* | 12 | 5 5/16 | 3 1/2 | 6 9/16 | 134 | 89 | 168 | | 11.1 | 4 | NA | 1.2 | 210 |
| YT314ML | 12 | 5 5/16 | 3 1/2 | 6 9/16 | 134 | 89 | 168 | | 11.1 | 4 | NA | 1.2 | 210 |
| YT314H | 12 | 6 | 3 7/16 | 5 3/4 | 158 | 87 | 146 | | 10.6 | 5 | NA | 1.2 | 240 |
| YT320H | 18 | 6 | 3 7/16 | 6 3/8 | 158 | 87 | 161 | | 13.4 | 5 | NA | 1.8 | 270 |
| YT320H | 18 | 6 7/8 | 3 7/16 | 6 1/8 | 175 | 87 | 155 | | 15.1 | 4 | NA | 1.8 | 310 |
| YT320HL | 18 | 6 7/8 | 3 7/16 | 6 1/8 | 175 | 87 | 155 | | 15.1 | 4 | NA | 1.8 | 310 |
| YT320HL-PM** | 18 | 6 7/8 | 3 7/16 | 6 7/8* | 175 | 87 | 175* | | 15.1 | 4 | NA | 1.8 | 310 |
| YT324HL | 21 | 8 1/8 | 3 7/16 | 6 3/8 | 206 | 87 | 162 | | 17.5 | 4 | NA | 2.1 | 350 |
| YT275 | 6 | 4 7/16 | 2 3/4 | 4 1/8 | 113 | 70 | 106 | | 4.6 | 5 | NA | 0.8 | 130 |
| YT218S | 8.8 | 6 | 3 7/16 | 3 11/16 | 158 | 87 | 99 | | 7.0 | 11 | NA | 0.8 | 190 |
| YT212S | 11 | 6 | 3 7/16 | 4 3/8 | 158 | 87 | 118 | | 8.1 | 11 | NA | 1.1 | 210 |
| YT214S | 11.2 | 6 | 3 7/16 | 4 3/8 | 158 | 87 | 118 | | 8.8 | 11 | NA | 1.1 | 230 |

Fresh Pack (Battery Supplied Dry with an Acid Bottle)

12 VOLT

| Battery Type | Capacity AH (10Hr) | Dimensions - Inches (± 1/16 in) | | | Dimensions - Millimeters (± 2 mm) | | | Assembly Figure (As Per Cover Polarity) | Approx Weight with Acid (lbs.) | Terminal Type (Refer to page 6) | Acid Volume (Liter) | Regular Charge Current (Amp) | CCA @ 0°F (-18°C) |
|-----------------|--------------------|---------------------------------|--------|--------|-----------------------------------|----|------|---|--------------------------------|---------------------------------|---------------------|------------------------------|-------------------|
| | | L | W | H | L | W | H | | | | | | |
| YT25S | 3.5 | 4 7/16 | 2 3/4 | 3 1/8 | 113 | 70 | 86 | | 3.5 | 5 | 0.28 | 0.4 | 65 |
| YT314M-BS* | 12 | 5 5/16 | 3 1/2 | 6 9/16 | 134 | 89 | 168 | | 11.1 | 4 | 0.68 | 1.2 | 210 |
| YT314ML-BS | 12 | 5 5/16 | 3 1/2 | 6 9/16 | 134 | 89 | 168 | | 11.1 | 4 | 0.68 | 1.2 | 210 |
| YT314H-BS | 12 | 6 | 3 7/16 | 5 3/4 | 158 | 87 | 146 | | 10.6 | 5 | 0.68 | 1.2 | 240 |
| YT320H-BS | 18 | 6 | 3 7/16 | 6 3/8 | 158 | 87 | 161 | | 13.4 | 5 | 0.82 | 1.8 | 270 |
| YT320H-BS | 18 | 6 7/8 | 3 7/16 | 6 1/8 | 175 | 87 | 155 | | 15.1 | 4 | 0.82 | 1.8 | 310 |
| YT320HL-BS | 18 | 6 7/8 | 3 7/16 | 6 1/8 | 175 | 87 | 155 | | 15.1 | 4 | 0.82 | 1.8 | 310 |
| YT320HL-BS-PM** | 18 | 6 7/8 | 3 7/16 | 6 7/8* | 175 | 87 | 175* | | 15.1 | 4 | 0.82 | 1.8 | 310 |
| YT324HL-BS | 21 | 8 1/8 | 3 7/16 | 6 3/8 | 206 | 87 | 162 | | 17.5 | 4 | 1.08 | 2.1 | 350 |

* Includes 10mm height spacer for use in replacing YB144-A1 and YB144-A2.
 ** Includes 20mm height spacer for use in replacing YB192L-E.



BATTERY SPECIFICATIONS

BATTERY SPECIFICATIONS AGM

Better

Factory Activated (Non-Spillable)

12 VOLT

| Battery Type | Capacity Ah (20+3) | Dimensions - Inches (± 1/16 in) | | | Dimensions - Millimeters (± 2 mm) | | | Assembly Figure (See Per Cover Plate) | Approx Weight with Acid (lbs.) | Terminal Type (Refer to page 8) | Acid Volume (Liter) | Regular Charge Current (Amp) | CCA @ 0°F (H8°C) |
|--------------|-----------------------|------------------------------------|--------|--------|--------------------------------------|-----|-----|--|---|--|---------------------------|---------------------------------------|------------------------|
| | | L | W | H | L | W | I | | | | | | |
| YD3 | 3 | 6 | 3 7/16 | 4 3/16 | 150 | 87 | 105 | | 6.6 | 5 | NA | 0.9 | 135 |
| YD12 | 10 | 6 | 3 7/16 | 5 1/8 | 150 | 87 | 130 | | 8.2 | 5 | NA | 1.2 | 180 |
| YD13 | 10 | 6 | 3 7/16 | 5 1/8 | 150 | 87 | 130 | | 8.2 | 5 | NA | 1.2 | 180 |
| YD14 | 12 | 6 | 3 7/16 | 5 3/4 | 150 | 87 | 145 | | 10.1 | 5 | NA | 1.4 | 240 |
| YD14L | 12 | 6 | 3 7/16 | 5 3/4 | 150 | 87 | 145 | | 10.1 | 5 | NA | 1.4 | 200 |
| YD15L | 13 | 6 7/8 | 3 7/16 | 5 1/8 | 175 | 87 | 130 | | 11.8 | 4 | NA | 1.3 | 220 |
| YD20 | 18 | 6 7/8 | 3 7/16 | 6 1/8 | 175 | 87 | 165 | | 13.8 | 4 | NA | 1.8 | 270 |
| YD20L | 18 | 6 7/8 | 3 7/16 | 6 1/8 | 175 | 87 | 165 | | 13.8 | 4 | NA | 1.8 | 270 |
| YD30L | 30 | 8 9/16 | 5 | 6 7/8 | 186 | 128 | 175 | | 22.8 | 4 | NA | 3 | 400 |
| YD30L-PM** | 30 | 8 9/16 | 5 | 6 7/8 | 186 | 128 | 175 | | 22.8 | 4 | 1.40 | 3.0 | 400 |

Fresh Pack (Battery Supplied Dry with an Acid Bottle)

12 VOLT

| Battery Type | Capacity Ah (20+3) | Dimensions - Inches (± 1/16 in) | | | Dimensions - Millimeters (± 2 mm) | | | Assembly Figure (See Per Cover Plate) | Approx Weight with Acid (lbs.) | Terminal Type (Refer to page 8) | Acid Volume (Liter) | Regular Charge Current (Amp) | CCA @ 0°F (H8°C) |
|---------------|-----------------------|------------------------------------|---------|---------|--------------------------------------|-----|------|--|---|--|---------------------------|---------------------------------------|------------------------|
| | | L | W | H | L | W | I | | | | | | |
| YD4-BS | 2.3 | 4 1/2 | 1 5/16 | 3 3/8 | 114 | 49 | 86 | | 2.4 | 12 | 0.14 | 0.3 | 45 |
| YD6-BS | 2.3 | 4 1/2 | 1 9/16 | 3 7/8 | 114 | 39 | 86.5 | | 2.4 | 13 | 0.12 | 0.3 | 40 |
| YD4L-BS | 3 | 4 1/2 | 2 13/16 | 3 3/8 | 114 | 71 | 86 | | 3.4 | 5 | 0.18 | 0.4 | 50 |
| YD5L-BS | 4 | 4 1/2 | 2 13/16 | 4 3/8 | 114 | 71 | 106 | | 4.2 | 5 | 0.24 | 0.5 | 80 |
| YD7-BS | 6.5 | 6 | 2 9/16 | 3 11/16 | 150 | 65 | 93 | | 5.9 | 11 | 0.33 | 0.7 | 120 |
| YD7A-BS | 6 | 6 | 3 7/16 | 3 3/4 | 150 | 87 | 94 | | 6.3 | 5 | 0.33 | 0.7 | 105 |
| YD7L-BS | 6 | 4 1/2 | 2 13/16 | 5 3/8 | 114 | 71 | 131 | | 6.1 | 5 | 0.33 | 0.6 | 100 |
| YD8-BS | 8 | 6 | 2 3/4 | 4 1/8 | 150 | 70 | 105 | | 8.7 | 11 | 0.40 | 0.8 | 145 |
| YD9-BS | 8 | 6 | 3 7/16 | 4 3/8 | 150 | 87 | 105 | | 6.6 | 5 | 0.40 | 0.9 | 135 |
| YD13A-BS | 10 | 6 | 3 7/16 | 4 3/8 | 150 | 87 | 105 | | 7.7 | 5 | 0.47 | 1.0 | 175 |
| YD13B-BS | 10 | 6 | 2 3/4 | 5 1/8 | 150 | 69 | 130 | | 8.0 | 11 | 0.52 | 1.0 | 240 |
| YD12-BS | 10 | 6 | 3 7/16 | 5 1/8 | 150 | 87 | 130 | | 8.2 | 5 | 0.60 | 1.2 | 180 |
| YD14-BS* | 12 | 6 | 3 7/16 | 5 3/4 | 150 | 87 | 145 | | 10.1 | 5 | 0.69 | 1.4 | 200 |
| YD14B-BS | 12 | 6 1/8 | 2 3/4 | 5 3/4 | 150 | 70 | 145 | | 11.8 | 11 | 0.60 | 1.2 | 240 |
| YD14L-BS | 12 | 6 | 3 7/16 | 5 3/4 | 150 | 87 | 145 | | 10.1 | 5 | 0.69 | 1.4 | 200 |
| YD14L-BS | 12 | 6 | 3 7/16 | 5 3/4 | 150 | 87 | 145 | | 10.1 | 5 | 0.69 | 1.4 | 200 |
| YD15L-BS | 13 | 6 7/8 | 3 7/16 | 5 1/8 | 175 | 87 | 130 | | 11.8 | 4 | 0.69 | 1.3 | 220 |
| YD16-BS | 14 | 6 | 3 7/16 | 6 3/8 | 150 | 87 | 161 | | 12.8 | 4 | 0.78 | 1.4 | 230 |
| YD16-BS-1 | 14 | 6 | 3 7/16 | 6 3/8 | 150 | 87 | 161 | | 12.8 | 1 | 0.78 | 1.4 | 230 |
| YD16L-BS | 17.7 | 7 7/8 | 3 3/16 | 6 11/16 | 185 | 88 | 170 | | 12.5 | 10 | 0.95 | 1.8 | 170 |
| YD20-BS | 18 | 6 7/8 | 3 7/16 | 6 1/8 | 175 | 87 | 165 | | 13.8 | 4 | 0.93 | 1.8 | 270 |
| YD20L-BS | 18 | 6 7/8 | 3 7/16 | 6 1/8 | 175 | 87 | 165 | | 13.8 | 4 | 0.93 | 1.8 | 270 |
| YD30L-BS | 30 | 8 9/16 | 5 | 6 7/8 | 186 | 128 | 175 | | 22.8 | 4 | 1.40 | 3.0 | 400 |
| YD30L-BS-PM** | 30 | 8 9/16 | 5 | 6 7/8 | 186 | 128 | 175 | | 22.8 | 4 | 1.40 | 3.0 | 400 |

* Available at Kawasaki dealers only
** Includes 17 mm height spacer for replacing YD30L-BS





BATTERY SPECIFICATIONS

Good

BATTERY SPECIFICATIONS

| High Performance, Conventional (YuMicron) | | | | | | | | 12 VOLT | | | | |
|---|----------------------|---------------------------------|-------|--------|-----------------------------------|------|-----|--|------------------------------------|---------------------------------|-------------------|------------------------------|
| Battery Type | Capacity AH (10Hr-R) | Dimensions - Inches (± 1/16 in) | | | Dimensions - Millimeters (± 2 mm) | | | Assembly Frame (As Per Cover Polarity) | Approx. Weight without Acid (lbs.) | Terminal Type (Refer to page 6) | Acid Volume (cc.) | Regular Charge Current (Amp) |
| | | L | W | H | L | W | H | | | | | |
| YB2SL-E | 2.5 | 3.318 | 2.314 | 4.148 | 80 | 70 | 106 | | 1.7 | - | 8.1 | 0.3 |
| YB2SL-E-1 | 2.5 | 3.318 | 2.314 | 4.148 | 80 | 70 | 106 | | 1.7 | - | 8.1 | 0.3 |
| YB3L-A | 3 | 3.788 | 2.414 | 4.388 | 98 | 68 | 118 | | 2.5 | 1 | 8.1 | 0.3 |
| YB3L-B | 3 | 3.788 | 2.414 | 4.388 | 98 | 68 | 118 | | 2.5 | 1 | 8.1 | 0.3 |
| YB4L-A | 4 | 4.304 | 2.314 | 3.588 | 128 | 70 | 92 | | 2.8 | 5 | 18.1 | 0.4 |
| YB4L-B | 4 | 4.304 | 2.314 | 3.588 | 128 | 70 | 92 | | 2.8 | 5 | 18.1 | 0.4 |
| YB5L-B | 5 | 4.304 | 2.318 | 5.148 | 128 | 80 | 138 | | 3.5 | 1 | 12.2 | 0.5 |
| YB6L-B | 6 | 5.142 | 2.708 | 3.4718 | 138 | 72.5 | 108 | | 3.5 | 1 | 12.2 | 0.5 |
| YB7-A | 8 | 5.518 | 3 | 5.144 | 136 | 75 | 132 | | 5.1 | 1 | 28.3 | 0.8 |
| YB7-B | 7 | 6 | 2.318 | 5.148 | 158 | 80 | 138 | | 4.0 | 1 | 18.9 | 0.7 |
| YB7C-A | 8 | 5.148 | 3.416 | 4.142 | 138 | 90 | 114 | | 5.1 | 1 | 28.3 | 0.8 |
| YB7L-B | 8 | 5.518 | 3 | 5.144 | 136 | 75 | 132 | | 5.1 | 1 | 28.3 | 0.8 |
| YB9A-A | 9 | 5.518 | 3 | 6.148 | 136 | 75 | 156 | | 5.3 | 1 | 28.3 | 0.9 |
| YB9L-A2 | 9 | 5.518 | 3 | 5.142 | 136 | 75 | 138 | | 5.3 | 2 | 28.3 | 0.9 |
| YB9-B | 9 | 5.518 | 3 | 5.142 | 136 | 75 | 138 | | 5.3 | 1 | 28.3 | 0.9 |
| YB9L-B | 9 | 5.518 | 3 | 5.142 | 136 | 75 | 138 | | 5.3 | 1 | 28.3 | 0.9 |
| YB10A-A2 | 11 | 5.518 | 3.416 | 6.148 | 136 | 90 | 156 | | 7.0 | 1 | 27.0 | 1.1 |
| YB10L-A2 | 11 | 5.518 | 3.416 | 5.344 | 136 | 90 | 146 | | 7.0 | 1 | 27.0 | 1.1 |
| YB10L-B | 11 | 5.518 | 3.416 | 5.344 | 136 | 90 | 146 | | 7.0 | 1 | 27.0 | 1.1 |
| YB10L-B2 | 11 | 5.518 | 3.416 | 5.344 | 136 | 90 | 146 | | 7.0 | 1 | 27.0 | 1.1 |
| YB12A-A | 12 | 5.518 | 3.316 | 6.518 | 134 | 80 | 168 | | 6.8 | 1 | 27.0 | 1.2 |
| YB12A-A *** | 12 | 5.518 | 3.316 | 6.518 | 134 | 80 | 168 | | 6.8 | 1 | 27.0 | 1.2 |
| YB12A-A **** | 12 | 5.518 | 3.316 | 6.518 | 134 | 80 | 168 | | 6.8 | 1 | 27.0 | 1.2 |
| YB12AL-A **** | 12 | 5.518 | 3.316 | 6.518 | 134 | 80 | 168 | | 6.8 | 1 | 25.4 | 1.2 |
| YB12AL-A | 12 | 5.518 | 3.316 | 6.518 | 134 | 80 | 168 | | 6.8 | 1 | 25.4 | 1.2 |
| YB12AL-A2* | 12 | 5.518 | 3.316 | 6.518 | 134 | 80 | 168 | | 6.8 | 1 | 25.4 | 1.2 |
| YB12A-B | 12 | 5.518 | 3.316 | 6.518 | 134 | 80 | 168 | | 6.8 | 1 | 25.4 | 1.2 |
| YB12B-B2 | 12 | 6.518 | 3.416 | 5.148 | 168 | 90 | 138 | | 7.1 | 1 | 27.0 | 1.2 |
| YB12C-A | 12 | 5.518 | 3.416 | 6.708 | 134 | 80 | 175 | | 7.1 | 4 | 27.0 | 1.2 |
| YB14-A2 | 14 | 5.518 | 3.412 | 6.818 | 134 | 89 | 168 | | 7.8 | 1 | 38.4 | 1.4 |
| YB14A-W | 14 | 5.518 | 3.412 | 6.4518 | 134 | 89 | 178 | | 7.9 | 1 | 38.4 | 1.4 |

* Includes terminal adapter for converting to top mount.
 ** When ordering this battery, specify terminal adapter.
 *** When ordering this battery, specify sensor.

* Discontinued, use YB12AL-A2.



BATTERY SPECIFICATIONS

Good

BATTERY SPECIFICATIONS

High Performance, Conventional (YuMicron)

12 VOLT

| Battery Type | Capacity Ah (YU4-T) | Dimensions - Inches (± 1/32 in) | | | Dimensions - Millimeters (± 2 mm) | | | Assemble Figure (As Per Cover Polarity) | Approx Weight w/out Acid (lbs.) | Terminal Type (Refer to page 6) | Acid Volume (oz) | Regular Charge Current (Amp) |
|---------------|------------------------|------------------------------------|---------|---------|--------------------------------------|------|-------|--|--|--|------------------------|---------------------------------------|
| | | L | W | H | L | W | H | | | | | |
| YB44-A2 | 14 | 5 5/8 | 3 1/2 | 6 15/16 | 134 | 89 | 178 | | 7.8 | 8 | 30.4 | 1.4 |
| YB4L-A1 | 14 | 5 5/8 | 3 1/2 | 6 8/16 | 134 | 89 | 168 | | 7.8 | 1 | 30.4 | 1.4 |
| YB4L-A2 | 14 | 5 5/8 | 3 1/2 | 6 8/16 | 134 | 89 | 168 | | 7.8 | 8 | 30.4 | 1.4 |
| YB4L-A2*** | 14 | 5 5/8 | 3 1/2 | 6 8/16 | 134 | 89 | 168 | | 7.8 | 8 | 30.4 | 1.4 |
| YB4L-B2 | 14 | 5 5/8 | 3 1/2 | 6 8/16 | 134 | 89 | 168 | | 7.8 | 8 | 30.4 | 1.4 |
| YB4-B2 | 14 | 5 5/8 | 3 1/2 | 6 8/16 | 134 | 89 | 168 | | 7.8 | 8 | 30.4 | 1.4 |
| SYB4L-A2+ | 14 | 5 5/8 | 3 1/2 | 6 8/16 | 134 | 89 | 168 | | 7.8 | 8 | 30.4 | 1.4 |
| SYB4L-B2*** | 14 | 5 5/8 | 3 1/2 | 6 8/16 | 134 | 89 | 168 | | 7.8 | 8 | 30.4 | 1.4 |
| YB64L-A2 | 16 | 8 1/8 | 2 13/16 | 6 7/16 | 207 | 71.5 | 164 | | 8.8 | 2 | 37.2 | 1.8 |
| HYB64-AB | 16 | 8 | 2 5/8 | 7 1/16 | 161 | 91 | 180 | | 8.5 | 7 | 30.4 | 1.8 |
| YB6-B | 18 | 6 7/8 | 4 | 6 1/8 | 175 | 100 | 155 | | 10.5 | 6 | 40.8 | 1.8 |
| YB6-B-CX | 18 | 6 7/8 | 4 | 6 1/8 | 175 | 100 | 155 | | 10.5 | 6 | 40.8 | 1.8 |
| YB6L-A-CX | 18 | 6 7/8 | 4 | 6 1/8 | 175 | 100 | 155 | | 10.5 | 6 | 40.8 | 1.8 |
| YB6L-B | 18 | 6 7/8 | 4 | 6 1/8 | 175 | 100 | 155 | | 10.5 | 6 | 40.8 | 1.8 |
| YB6B-A | 18 | 6 5/8 | 3 9/16 | 6 3/8 | 180 | 90 | 161 | | 8.4 | 4 | 33.8 | 1.8 |
| YB6B-A1* | 18 | 6 5/8 | 3 9/16 | 6 3/8 | 180 | 90 | 161 | | 8.4 | 7 | 33.8 | 1.8 |
| YB6CB | 18 | 6 7/8 | 4 | 6 7/8 | 175 | 100 | 175 | | 10.1 | 5 | 40.8 | 1.8 |
| YB6CL-B | 18 | 6 7/8 | 4 | 6 7/8 | 175 | 100 | 175 | | 10.1 | 5 | 40.8 | 1.8 |
| SYB6L-B*** | 18 | 6 15/16 | 4 | 6 1/8 | 175 | 100 | 155 | | 9.3 | 6 | 43.9 | 1.8 |
| YB8-A | 18 | 7 1/8 | 3 9/16 | 6 3/8 | 180 | 90 | 182 | | 8.4 | 7 | 40.8 | 1.8 |
| YB8L-A | 18 | 7 1/8 | 3 9/16 | 6 3/8 | 180 | 90 | 182 | | 8.4 | 7 | 40.8 | 1.8 |
| Y50-MB8A | 28 | 8 1/8 | 3 9/16 | 6 15/16 | 205 | 90 | 178 | | 11.2 | 7 | 50.7 | 2.8 |
| Y50-MB8L-A | 28 | 8 1/8 | 3 9/16 | 6 3/8 | 205 | 90 | 182 | | 11.2 | 7 | 44.0 | 2.8 |
| Y50-MB8L-A-CX | 28 | 8 1/8 | 3 9/16 | 6 3/8 | 205 | 90 | 182 | | 11.2 | 7 | 44.0 | 2.8 |
| Y50-MB8L-A3 | 28 | 8 1/8 | 3 9/16 | 6 3/8 | 205 | 90 | 182 | | 11.2 | 4 | 44.0 | 2.8 |
| SY50-MB8L-A1* | 28 | 8 1/8 | 3 9/16 | 6 3/8 | 205 | 90 | 182 | | 11.2 | 7 | 44.0 | 2.8 |
| YB10-M24-A** | 28 | 7 1/4 | 4 7/8 | 6 7/8 | 184 | 124 | 175 | | 14.4 | 3 | 57.5 | 2.8 |
| YB10-M24L-B** | 28 | 7 1/4 | 4 7/8 | 6 7/8 | 184 | 124 | 175 | | 14.4 | 3 | 57.5 | 2.8 |
| YB30L-B | 38 | 6 5/8 | 5 3/16 | 6 15/16 | 188 | 132 | 178 | | 14.1 | 4 | 57.5 | 3.8 |
| YB30CL-B | 38 | 6 5/8 | 5 3/16 | 7 8/16 | 188 | 132 | 192.2 | | 14.5 | 4 | 57.5 | 3.8 |
| 5B914 | 48*** | 7 7/8 | 3 1/4 | 6 7/8 | 186 | 82 | 171 | | 8.4 | 10 | 33.8 | 1.8 |
| 5B913 | 48*** | 7 7/8 | 3 1/4 | 6 7/8 | 186 | 82 | 171 | | 8.4 | 10 | 33.8 | 1.8 |
| 52000 | 30*** | 7 7/8 | 5 1/8 | 6 7/8 | 186 | 128 | 171 | | 16.1 | 10 | 54.1 | 3.8 |

** Discontinued, use YB14L-B2.
 *** Discontinued, use YB18L-B.
 *** Discontinued, use 53830.
 *** Discontinued.

* This battery includes a sensor.
 * Includes terminal adaptor for can nesting to side mount.
 *** DIN Standard @ 20 hr rate.





BATTERY SPECIFICATIONS

Good

BATTERY SPECIFICATIONS

Conventional

6 VOLT

| Battery Type | Capacity AH (10Hr) | Dimensions - Inches (± 1/16 in) | | | Dimensions - Millimeters (± 2mm) | | | Assembly Figure (No. Per Cover Plate) | Approx. Weight w/out Acid (lbs.) | Terminal Type (Refer to page 6) | Acid Volume (cc.) | Regular Charge Current (Amp) |
|--------------|-----------------------|------------------------------------|-------|--------|-------------------------------------|----|-----|--|---|--|-------------------------|---------------------------------------|
| | | L | W | H | L | W | H | | | | | |
| 6R2-3A | 2 | 2.34 | 1.78 | 3.34 | 70 | 47 | 98 | | 1.0 | - | 3.4 | 0.2 |
| 6R2-3A-1** | 2 | 2.34 | 1.78 | 3.34 | 70 | 47 | 98 | | 1.0 | - | 3.4 | 0.2 |
| 6R2-3A-3 | 2 | 2.34 | 1.78 | 3.34 | 70 | 47 | 98 | | 1.0 | - | 3.4 | 0.2 |
| 6R2-3A-4 | 2 | 2.34 | 1.78 | 3.34 | 70 | 47 | 98 | | 1.0 | - | 3.4 | 0.2 |
| 6R2-3A-4 | 2 | 2.34 | 1.78 | 3.34 | 70 | 47 | 98 | | 1.0 | - | 3.4 | 0.2 |
| 6R2A-2C | 2 | 2.34 | 1.78 | 4.318 | 70 | 47 | 108 | | 1.0 | - | 3.4 | 0.2 |
| 6R2A-2C-1** | 2 | 2.34 | 1.78 | 4.318 | 70 | 47 | 108 | | 1.0 | - | 3.4 | 0.2 |
| 6R2A-2C-3 | 2 | 2.34 | 1.78 | 4.318 | 70 | 47 | 108 | | 1.0 | - | 3.4 | 0.2 |
| 6R4-3A | 4 | 2.126 | 2.126 | 3.34 | 71 | 71 | 98 | | 1.3 | - | 6.8 | 0.4 |
| 6R4-3A-4 | 4 | 2.126 | 2.126 | 3.34 | 71 | 71 | 98 | | 1.3 | - | 6.8 | 0.4 |
| 6R4-3A-5 | 4 | 2.126 | 2.126 | 3.34 | 71 | 71 | 98 | | 1.3 | - | 6.8 | 0.4 |
| 6R4-3A-4 | 4 | 2.126 | 2.126 | 3.34 | 71 | 71 | 98 | | 1.3 | - | 6.8 | 0.4 |
| 6R4A-4D | 4 | 2.38 | 2.14 | 5.18 | 61 | 57 | 131 | | 1.7 | - | 6.8 | 0.4 |
| 6R4B-2A | 4 | 4 | 1.78 | 3.34 | 102 | 48 | 98 | | 1.7 | - | 6.8 | 0.4 |
| 6R4B-2A-3 | 4 | 4 | 1.78 | 3.34 | 102 | 48 | 98 | | 1.7 | - | 6.8 | 0.4 |
| 6R4B-2A-5 | 4 | 4 | 1.78 | 3.34 | 102 | 48 | 98 | | 1.7 | - | 6.8 | 0.4 |
| 6R4C-1B** | 4 | 2.126 | 2.126 | 4.18 | 71 | 71 | 106 | | 1.4 | - | 6.8 | 0.4 |
| 6R5-10 | 5.5 | 3.918 | 2.34 | 3.9518 | 90 | 70 | 108 | | 1.8 | - | 18.1 | 0.8 |
| 6R6-3B | 6 | 3.78 | 2.14 | 4.38 | 99 | 57 | 111 | | 2.0 | ⊕ | 18.1 | 0.8 |
| 6R6-3B-1 | 6 | 3.78 | 2.14 | 4.38 | 99 | 57 | 111 | | 2.0 | ⊕ | 18.1 | 0.8 |
| 6R6-4D-2 | 6 | 3.78 | 2.14 | 4.38 | 99 | 57 | 111 | | 2.0 | - | 18.1 | 0.8 |
| 6R11-2D | 11 | 5.78 | 2.34 | 3.9518 | 158 | 70 | 108 | | 3.5 | ⊕ | 13.5 | 1.1 |
| 6R14-1B | 11 | 4.126 | 2.78 | 5.18 | 122 | 62 | 131 | | 3.5 | ⊕ | 13.5 | 1.1 |
| 6S4-B | 12 | 6.18 | 2.14 | 4.918 | 158 | 57 | 118 | | 3.8 | ⊕ | 18.9 | 1.2 |
| 6R12A-2B | 12 | 6.18 | 2.14 | 4.918 | 158 | 57 | 118 | | 3.8 | ⊕ | 18.2 | 1.2 |
| 6R3B-6A | 13 | 4.118 | 3.14 | 6.1518 | 119 | 83 | 161 | | 4.7 | ⊕ | 21.8 | 1.3 |
| 6Y8L-B | 8 | 4.34 | 2.34 | 3.34 | 128 | 70 | 95 | | 3.0 | ⊕ | 18.5 | 0.8 |
| 6Y8L-2D | 11 | 5.78 | 2.34 | 3.9518 | 158 | 70 | 108 | | 4.4 | ⊕ | 13.5 | 1.1 |

** 6R2A-2C-1 replaces 6R2-6.
 ** Discontinued.





BATTERY SPECIFICATIONS



BATTERY SPECIFICATIONS

| Battery Type | Capacity AH (XXH-3) | Dimensions - Inches (± 1/32 in) | | | Dimensions - Millimeters (± 2 mm) | | | Assembly Figure (As Per Cover Polarity) | Approx. Weight w/out Acid (lbs.) | Terminal Type (Refer to page 6) | Acid Volume (oz.) | Regular Charge Current (Amp) |
|--------------------------|---------------------|------------------------------------|-------|--------|--------------------------------------|-----|-----|--|--|--|-------------------------|---------------------------------------|
| | | L | W | H | L | W | H | | | | | |
| 12N5-3B | 5 | 4.34 | 2.38 | 5.48 | 120 | 60 | 130 | | 3.1 | 6 | 13.5 | 0.5 |
| 12N5-4B | 5 | 4.34 | 2.38 | 5.48 | 120 | 60 | 130 | | 3.1 | 6 | 13.5 | 0.5 |
| 12N5.5-3B | 5.5 | 5.5/8 | 2.38 | 5.48 | 135 | 60 | 130 | | 4.3 | 6 | 13.5 | 0.8 |
| 12N5.5-4A | 5.5 | 5.5/8 | 2.38 | 5.48 | 135 | 60 | 130 | | 4.3 | 2 | 13.5 | 0.8 |
| 12N5.5A-3B | 5.5 | 4.1/8 | 3.0/8 | 4.42 | 103 | 90 | 114 | | 4.3 | 6 | 16.9 | 0.8 |
| 12N7-3B | 7 | 5.5/8 | 3 | 5.44 | 135 | 75 | 133 | | 4.8 | 6 | 16.9 | 0.7 |
| 12N7-4A | 7 | 5.5/8 | 3 | 5.44 | 135 | 75 | 133 | | 4.8 | 6 | 16.9 | 0.7 |
| 12N7-4B | 7 | 5.5/8 | 3 | 5.44 | 135 | 75 | 133 | | 4.8 | 6 | 16.9 | 0.7 |
| 12N7D-3B | 7 | 5.5/8 | 3 | 5.15/8 | 135 | 75 | 160 | | 4.8 | 6 | 20.3 | 0.7 |
| 12N9-3A | 9 | 5.5/8 | 3 | 5.42 | 135 | 75 | 179 | | 5.4 | 9 | 20.3 | 0.8 |
| 12N9-3A-1 ⁰⁰ | 9 | 5.5/8 | 3 | 5.42 | 135 | 75 | 179 | | 5.4 | 6 | 20.3 | 0.8 |
| 12N9-3B | 9 | 5.5/8 | 3 | 5.42 | 135 | 75 | 179 | | 5.4 | 6 | 20.3 | 0.8 |
| 12N9-4B-1 | 9 | 5.5/8 | 3 | 5.42 | 135 | 75 | 179 | | 5.4 | 6 | 20.3 | 0.8 |
| 12N10-3A-2 ⁰⁰ | 10 | 5.5/8 | 3.0/8 | 5.34 | 135 | 90 | 145 | | 5.8 | 8 | 27.0 | 1.0 |
| 12N12A-4A-1 | 12 | 5.5/8 | 3.3/8 | 6.5/8 | 134 | 80 | 180 | | 6.8 | 6 | 23.7 | 1.2 |
| 12N14-3A | 14 | 5.5/8 | 3.12 | 6.8/8 | 134 | 89 | 186 | | 7.5 | 8 | 27.0 | 1.4 |
| 12N24-3A | 24 | 7.44 | 4.78 | 6.78 | 184 | 124 | 175 | | 12.1 | 3 | 40.6 | 2.4 |
| 12N24-3 | 24 | 7.44 | 4.78 | 6.78 | 184 | 124 | 175 | | 12.1 | 3 | 40.6 | 2.4 |
| Y60-12H | 29 | 8.48 | 5.14 | 6.42 | 206 | 130 | 165 | | 13.3 | 9 | 47.8 | 2.8 |

- Discontinued, use Y68L-A2.
- Discontinued, use Y67XL-A2.

BATTERY CROSS REFERENCE CHART

| GYZ Series | AGM Factory Activated | AGM High Performance | AGM | YuMicron CX | Conventional |
|-------------------------------|--|----------------------------|------------------------|---------------------------|----------------------------|
| - | - | - | - | 6YB11-2D | 6N11-2D |
| - | YTZ5S | YTX4L-BS | YT4L-BS (Discontinued) | YB4L-A, YB4L-B | - |
| - | YTZ7S | YTX5L-BS | YT5L-BS (Discontinued) | - | - |
| - | - | - | - | YB5L-B | 12N5-3B |
| - | - | - | - | YB7L-B | 12N7-3B |
| - | - | - | - | YB7-A | 12N7-4A |
| - | - | - | - | YB9-B | 12N9-4B-1 |
| - | - | - | - | YB9L-B | 12N9-3B |
| - | - | - | - | YB10L-A2 | 12N10-3A-2 |
| - | - | - | - | YB12A-A | 12N12A-4A-1 |
| GYZ16H | YTX14H | YTX14H-BS | YTX14-BS | - | - |
| - | YTX14AH | YTX14AH-BS | - | YB14-A2, YB14-B2 | - |
| - | YTX14AH ^{3,4} | YTX14AH-BS ^{3,4} | - | YB14A-A1, YB14A-A2 | - |
| - | YTX14AHL | YTX14AHL-BS | - | YB14L-A2 | 12N14-3A |
| - | YTX14AHL | YTX14AHL-BS | - | YB14L-B2 | - |
| GYZ16HL | YTX14L | YTX14L-BS | - | - | - |
| - | - | - | YT198L-BS | 51913, 51814 | - |
| - | YTX20CH | YTX20CH-BS | YTX16-BS | - | - |
| GYZ20H ⁶ | YTX20H ⁶ , YTX20 ² | YTX20H-BS ² | YTX20-BS ² | YB16-B, YB16-B-CX | - |
| GYZ20H | YTX20H, YTX20 ² | YTX20H-BS ² | YTX20-BS ² | YB18-A | - |
| - | YTX20HL-PW ⁶ | YTX20HL-BS-PW ⁶ | - | YB16CL-B | - |
| GYZ20HL ⁴ , GYZ20L | YTX20HL, YTX20L ⁷ | YTX20HL-BS ⁷ | YTX20L-BS ⁷ | YB16HL-A-CX | - |
| GYZ20HL, GYZ20L | YTX20HL, YTX20L ² | YTX20HL-BS ² | YTX20L-BS ² | YB16L-B | - |
| GYZ20HL ⁴ , GYZ20L | YTX20HL, YTX20L ² | YTX20HL-BS ² | YTX20L-BS ² | YB18L-A | - |
| GYZ20HL ⁴ , GYZ20L | YTX20HL, YTX20L | YTX20HL-BS ² | YTX20L-BS | - | - |
| - | YTX24HL ³ | YTX24HL-BS ³ | - | Y50-N18L-A, 450-N18L-A-CX | - |
| - | YTX24HL | YTX24HL-BS | - | Y50-N18-A3 | - |
| - | YTX24HL ^{3,1} | YTX24HL-BS ^{3,1} | - | SY50-N18-AT | - |
| GYZ32HL | YX30L | YX30L-BS | - | YB30L-B | - |
| - | YX30L-PW ⁵ | YX30L-BS-PW ⁵ | - | YB30CL | - |
| - | YX30L | YX30L-BS | - | 53030 | Y60-N24AL-B (Discontinued) |

¹ Eliminates need for sensor (needs to be disabled).
² The YTX20 series batteries may be used as an optional upgrade, but some modification to the hold down may be necessary. See battery label for retrofit cautions.
³ Top and front terminal mounts only.
⁴ Includes 10mm height spacer.
⁵ Includes 17mm height spacer.
⁶ Includes 20mm height spacer for use in replacing YB16CL-B.
⁷ Requires use of Yuasa Cover/Spacer Kit, see part no. 478651.
⁸ For Harley-Davidson Models only.

BATTERIES

TERMINAL TYPES

Terminal shapes vary from one battery to another. By identifying the correct replacement battery from the listing in this book, you are assured of the proper terminal configuration. For custom applications, refer to the following chart to identify terminal shape and corresponding batteries.

| Type | Illustration | Terminal | | | Battery Type | | | | | |
|------|--------------|----------|------|-----|---|--|---|---|---|--|
| | | Front | Side | Top | | | | | | |
| 1 | | | | | YB71-A YB14L-A1 | YT311-B5-1 | | | | |
| 2 | | | | | YB8L-A2 12N6.5-4A YB16AL-A2 | | | | | |
| 3 | | | | | YB8-H24AL-B 12N24-1 | YB2-H24-A 12N24-3A | | | | |
| 4 | | | | | 6Y22L YB32L-B YT32L-B5 YT32H-L-B5 | YB2-H14L-A3 YB22L-B5 YT32H-B5 YT32H-L-B5 | YB125-A YB22L-B5-PM YT320-B5 YT320H-L-B5 | YB160-A YT3244H-B YT320H-B5 | YB300L-B YT3244H-B5 YT320H-L-B5-PM | |
| 5 | | | | | 6Y216H 6Y216HL YB4L-B YT324L-B5 | YT321-B5 YB114-B5 YT124-B5 YT3203H-B5 | YT32-B5 YB162-B YT32-B5 YT32L-B5 | YT255 YT273 YB160L-B YT324-B5 | YT32L-B5 YB4L-A YT324H-B5 YT32A-B5 | |
| 6 | | | | | YB3L-A YB7L-B YB12A-A YB16-B 12N6-3B 12N7-4A 12N8-4B-1 6N6-3B 6N4-B | YB3L-B YB8A-A YB12AL-A YB16-B-CK 12N6-4B 12N7-4B 12N10-3A 6N6-3B-1 6N4-A | YB3L-B YB9-B YB12AL-A2** YB16L-B 12N6.5-3B 12N70-3B 12N11-3A-1 6N1A-1B | YB7-A YB8L-B YB12A-B YB16AL-A-CK 12N6.5A-3B 12N8-3A-1 12N12A-4A-1 6N1-2B | YB7B-B YB10L-B YB14A-A1 YB16L-B 12N7-3B 12N8-3B 6N12A-2B 6N1-B | |
| 7 | | | | | YB16A-AH YB116A-A | YB16B-AH** YB2-H16L-A | YB18-A YB2-H16L-A-CK | YB16L-A YB2-H16L-AT | | |
| 8 | | | | | YB10A-A2 YB14-A2 YB14-B2 12N14-3A | YB10L-A2 YB14A-A2 YB14L-B2 | YB10L-B2 YB14L-A2 12N11-3A-2 | YB12B-B2 YB14L-A2 12N11-3A-1 | | |
| 9 | | | | | YB12H 12N8-3A | | | | | |
| 10 | | | | | 51814 | 51913 | 53000 | YB16H-B5 | | |
| 11 | | | | | YB18-B5 YB7B-B5 | YT210S | YT212S YT12B-B5 | YT214S | YT14B-B5 | |
| 12 | | | | | YB16A-B5 | | | | | |
| 13 | | | | | YT4B-B5 | | | | | |
| 14 | | | | | 6Y22H 6Y22HL | 6Y22L | | | | |

** Includes terminal adapter for converting to side mount.
* Includes terminal adapter for converting to top mount.

BATTERY CHARGERS & MAINTAINERS

YUASA AUTOMATIC 12V 4 AMP BATTERY CHARGER

330-1002

- Charges both conventional (flooded) and sealed (VRLA) Power- sports batteries.
- Up to 20 volts aids in recovering deeply discharged "sulfated" batteries.
- "Quick Mode" for quick vehicle set-up.
- "Normal Mode" for smaller batteries, initial activation and deeply discharged batteries.
- Diagnosis function advises if battery is damaged and will not take a charge, and alerts if charger is attached in reverse to the battery.



YUASA 2 AMP DUAL-BANK AUTOMATIC CHARGER & MAINTAINER

330-1003

- 2 independent charging stations.
- Charges 6 volt and 12 volt batteries.
- Automatic charging and maintenance maximizes battery life and performance.
- OEM approved 5-stage charging algorithm saves time and energy.
- Active desulfation to recover sulfated batteries.
- Defective battery detection to eliminate surprises.
- Includes quick connect cables and alligator clips (6 ft. Total).
- 5 year warranty



YUASA AUTOMATIC 3 AMP HIGH CHARGER & MAINTAINER

330-1004

- Easy to use, simply attach to battery and plug it in.
- Automatic charging and maintenance maximizes battery life and performance.
- OEM approved 5-stage charging algorithm saves time and energy.
- Active desulfation to recover sulfated batteries.
- Defective battery detection to eliminate surprises.
- Includes quick connect cable and alligator clips (6 ft. total).
- 5 year warranty



YUASA AUTOMATIC 1 AMP HIGH EFFIECIENCY CHARGER

330-1000

- 3 stage charge cycle.
- Easy to use, simply attach to battery and plug it in.
- Charges and maintains your battery.
- 3 color LED displays your charge status at a glance.
- Reaches 14.4 volt peak then automatically maintains.
- Designed to prevent overcharging.
- Includes quick connect adapter and alligator clips.
- 5 year warranty



10 BANK BATTERY MAINTAINER

330-1006

- Maintain up to 10 batteries at a time.
- 5-stage maintenance / float charge.
- Prequalification battery test.
- Built-in timer for battery protection.



BATTERY TESTERS

DIGITAL POWERSPORTS BATTERY TESTER

- Developed exclusively for Powersports batteries.
- Determines accurate battery status in seconds.
- Tests batteries according to A.H. rating.
- Single load, dynamic resistance technology minimizes battery drain during test.
- Tests both charged and discharged batteries.
- 1 year warranty
- Two options available: Tester only (shown) or Tester with Printer



| PART # | DESCRIPTION |
|----------|---|
| 330-1005 | Battery Tester (YUA00BTY01) |
| 330-1007 | Battery Tester with Printer (YUA00BTY01P) |
| 330-1008 | Paper roll replacement for 330-1007 |

BATTERY ACCESSORIES

| PART # | DESCRIPTION |
|------------|--|
| 330-1050 | Yuasa Jumper Cables |
| 330-1030 | Battery Plate for Watercraft YTX20HL-BS |
| 330-1121 | Acid Pack Only - YTX9-BS (0.40L) |
| 330-1101 | Acid Pack Only - YTX12BS (0.6L) |
| 330-1104 | Acid Pack Only - YTX14BS (0.69L) |
| 330-1141 | Acid Pack Only - YTX4L-BS (0.174L) |
| 330-1151 | Acid Pack Only - YTX5L-BS (0.24L) |
| 330-1171 | Acid Pack Only - YTX7L-BS (0.33L) |
| 330-1106 | Acid Pack Only - YTX20L-BS (0.93L) |
| 330-1119 | Acid Pack Only - YIX30-BS (1.4L) |
| 330-1031 | Battery Top for YIX30L-BS Batteries |
| 330-1403 | Top Strip Cap YTX4, 5, 7 (no "A's") |
| 330-1401 | Top Strip Cap YTX9,12,14,16, all "A's" |
| 330-1402 | Top Strip Cap YTX20/24 |
| 330-478651 | Retrofit Cover for 320-YTX20L-BS |
| 330-1415 | Terminal Adapter for YB12A-A |
| 330-1416 | Terminal Adapter for YB12AL-A |
| 330-1010 | Cable Alligator Clips (2 pole flat) |
| 330-1013 | Cable Alligator Clips (male barrel plug) |
| 330-1011 | Ring Connectors |
| 330-1014 | Charger Lead 25' w/2pole flat extension) |
| 330-1436 | Vent Tube |
| 330-1425 | Push in Plug |
| 330-1426 | Screw in Plug - Small Yellow |
| 330-1428 | Screw in Plug - Large Green or Red |
| 330-1417 | Standard Hex Nut & Bolt |
| 330-1418 | Hex Bolt & Square Nut |
| 330-1419 | Hex Bolt/Nut Assembly |
| 330-1420 | Hex Bolt/Nut Assembly YT7B-BS |
| 330-1421 | 12mm Nut / Bolt set |



330-1415



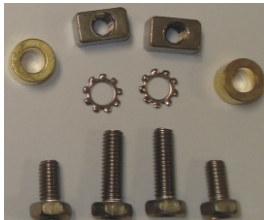
330-1416



330-1418



330-1050



330-1419



330-1425



330-1426



330-1428