

KOSO GAUGES

Koso Exhaust, Gas and Temperature Meters

High Precision Exhaust Temperature Gauge with EGT Senders

Warns You Before Your Engine Becomes Too Hot!

Koso digital high precision exhaust temperature gauges provide precious information on your engine, allowing you to tune your engine more precisely. If it is too lean the exhaust temperature is hotter and if it is too rich, the exhaust temperature is cooler.



- Digital LCM Meter with Blue LED Back Light
- Engine Temp Over Heat Warning (Flashing Amber Light)
- DC12V Only
- Easy Programming
- Peak recall showing the highest temperature
- Range 100°C-1200°C
- Easy Wiring
- Kit includes: gauge, sensors, clamp, wiring, mounting bracket and instructions

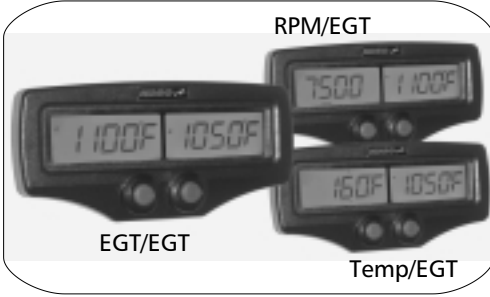
| Description | TCI Part# | Retail |
|--|-----------|------------|
| Single EGT Meter with Standard EGT Sensor | 756-5500 | \$262.95-H |
| Single EGT Meter with Fast Response EGT Sensor | 756-5509 | \$287.95-H |
| Dual EGT Meter with Standard EGT Sensor | 756-5530 | \$399.95-H |
| Dual EGT Meter with Fast Response EGT Sensor | 756-5531 | \$449.95-H |



Dual EGT with RPM & Water Temperature

The settable warning and maximum recall functions for both EGT's, RPM and water temperature are easy to use and show you vital engine information. The color change and backlighting screen makes it very easy to see the settable warning. This tool can save your engine from expensive repairs!

*Independent settable warning for each side
Color change to amber to warn you*

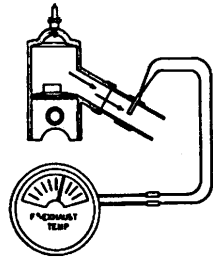


| Description | TCI Part# | Retail |
|-------------------------------|-----------|------------|
| With Standard EGT Sensor | 756-5535 | \$459.95-H |
| With Fast Response EGT Sensor | 756-5536 | \$499.95-H |

How to Install EGT Probes

The exhaust temperature gauge is powered by a thermocouple probe mounted in the exhaust pipe.

- 1 pipe per cylinder (1 Probe per cylinder) - Mount probe 10 - 12" from piston.
- 2 into 1 (2 Probes) - Install the 2 probes in the "Y" as close to the junction as possible.
- 2 into 1 (1 Probe) - Install the probe in the pipe 2 inches beyond the coupler.



| What do "Exhaust Temperature Readings" Mean? | |
|--|--------------|
| 800 - 1100° F | Too Rich |
| 1100 - 1300° F | Good Mixture |
| 1300° F | Too Lean |

DIGITAL AND ANALOG PERFORMANCE GAUGES

- Essentials
- Performance
- Windshield
- Add-on
- Skis & Runners
- Tracks
- Suspension
- Clutch
- Comet
- Belts
- Piston & Gasket
- Engine
- Electrical
- Carb
- Brakes
- Cables
- Chemical & Tools

Essentials
Performance
Windshield
Add-on
Skis & Runners
Tracks
Suspension
Clutch
Comet
Belts
Piston & Gasket
Engine
Electrical
Carb
Brakes
Cables
Chemical & Tools

DIGITAL AND ANALOG PERFORMANCE GAUGES

KOSO GAUGES

Koso G2 Revolution Meter

756-5624

\$249.95-H

- Tachometer
- Shift Indicator Light
- Volt Meter
- 24H Clock
- Oil Temperature
- Water Temperature
- Air/Fuel Ratio - optional needs optional O2 Sensor
- 1 Indicator Lights /2 Warning Lights



Koso RX2-NR GP Style Tachmeter

Special Order BA015000

\$249.95-H

Multi functional meter.

- Tachometer with a display range of 0-16,000 rpm
- Programmable shift light
- Water Temperature
- Temperature Alarm
- Blue back light with white face

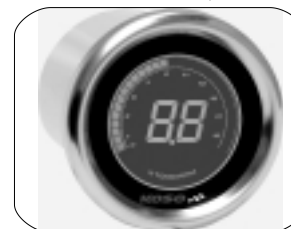


Koso DL-01R Tachmeter

Special Order BA484B00

\$199.95-H

- Large digit readout of RPMs
- REV indicator bar.
- Tachometer with a display range of 0-10,000/15,000/19,900 RPM
- Water Temperature
- Blue back light with white face



Koso GP Style Universal Tachometer

756-5622

\$143.95-H

- 0 - 15,000 RPM
- Rev Indicator Light
- Fits on Carburetor and EFI Models
- Illuminated needle



Koso Tachometer Meter with Warning

Special Order BA4800R0

\$124.95-H

Tachometer with over RPM alert function

- 2 Stroke: 1 - 4 Pistons
- 4 Stroke 1-12 Pistons
- Over RPM function



Koso RPM Temperature Gauge

Special Order BA550B20

\$127.95-H

Digital display with tach and water temperature

- 2 Stroke: 1 - 4 Pistons
- 4 Stroke 1-12 Pistons
- Temperature 0-120 C




KOSO GAUGES

DIGITAL AND ANALOG PERFORMANCE GAUGES

Essentials
Performance
Windshield
Add-on
Skis & Runners
Tracks
Suspension
Clutch
Comet
Belts
Piston & Gasket
Engine
Electrical
Carb
Brakes
Cables
Chemical & Tools


Koso Temperature Meter with Warning 756-5510 \$124.95-H
Warns you before you engine becomes too hot.

- Temperature Reading in C or F
- Temperature Range 0-120 C or 32-248 F
- Over temperature warning



Koso Wideband Air/Fuel Ratio Meter 756-5630 \$424.95-H
Programmable warning will let you know if your engine is running too lean or too rich

- Air/Fuel Ratio information
- Warning function will tell if your engine is running too lean or too rich
- Optional O Adaptor available for 2-stroke engines (756-5631)





Koso Air/Fuel Ratio Mini Gauge Special Order BA005000 \$249.95-H
Narrow band air/fuel ration gauge is specifically designed

- Air/Fuel Ratio information





Koso Mini LCD Thermometer 756-5520 \$99.95-H
Provides engine Temperature Readings

- C or F readings
- Backlight

Koso Mini Engine Hour Meter 756-5700 \$74.95-H
A great tool for the proper maintenance of your engine

- Provides engine running hours
- 2 resettable time logs



KOSO GAUGE ACCESSORIES

| | | | |
|---|----------|------------|---|
| Adapter for 2-Stroke Engine (For Wideband Air Fuel Ratio Gauge) | 756-5631 | \$ 49.95-H | |
| Wideband Bosch Oxygen Sensor - special order (For Wideband Air Fuel Ratio Gauge) | 28-BOSCH | \$120.95-H | |
| Standard EGT Sensor | 756-5504 | \$ 99.95-H |  |
| Fast Response EGT Sensor | 756-5505 | \$124.95-H | |
| EGT Weld-On Bushing | 756-5507 | \$ 27.95-H | |
| EGT 40 - 60 mm Clamp | 756-5503 | \$ 13.95-H | |
| EGT 60 - 80 mm Clamp | 756-5506 | \$ 13.95-H | |


756-5631


756-5507


756-5503/6


28-Bosch


756-5505

Essentials
Performance
Windshield
Add-on
Skis & Runners
Tracks
Suspension
Clutch
Comet
Belts
Piston & Gasket
Engine
Electrical
Carb
Brakes
Cables
Chemical & Tools

TEMPERATURE GAUGES

Twin 3" Cylinder head 756-2130 \$149.95-F
 • If you have a twin cylinder engine with separate pipes, or want to monitor each cylinder on your two-into-one exhaust, the twin gauge has two separate needles combined in one unit. The standard 3" model is designed to be mounted in the console or dash panel.

Optional LIGHT KIT (if Required) 756-5009 x 2



Triple 3" Exhaust - Chrome 756-3031 \$249.95-F
 • What do you do if you have a three cylinder engine and want to check all exhausts at once? The Triple Gauge solves your problem with its three-into-one design combined in a 3" housing.
 • Chrome Bullet Case



Note: Senders and Light Kits must be purchased separately

PARTS FOR WESTACH

Optional Light Kit 756-5009 \$9.25-H
 • The light kit requires 12 volts DC
 • Single & triple take one kit.
 • Twins need two kits.



756-5009

Patch Cords 756-5007 \$11.95-H
 • Patch cords add two feet to either exhaust or cylinder temperature senders.



756-5007

Low Power Adapter Kit 756-9011 \$39.95-H
 The low power adapter kit is required to operate the Hour Meter kit on small engines that do not have a DC source.



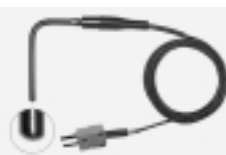
756-5006

Westach Cylinder Head Sender 756-5006 \$31.50-H
 • 18mm Spark Plug Sender

TEMPERATURE SENDERS/PROBES

EGT Exhaust Sender
 • EGT Technologies has taken the technology from these high performance vehicles and use it to build top quality, time tested sensors for your snowmobile.
 • The Stinger series and the Bullet series both come with a proper connector to mate with your current instrument.

| DESCRIPTION | STYLE | PART# | RETAIL |
|--------------------------------|-----------------|----------|------------|
| Standard Koso EGT Sender | Stinger | 756-5504 | \$95.95-H |
| Fast Response Koso EGT Sender | Clamp-on Bullet | 756-5505 | \$124.95-H |
| Westach EGT Sender | Stinger | 756-4010 | \$99.95-H |
| Westach EGT Sender | Weld-in Bullet | 756-4012 | \$123.95-H |
| Digitron 1 (Plastic Connector) | Clamp-on Bullet | 756-4020 | \$99.95-H |
| Pyro 2000 EGT Sender | Stinger | 756-4051 | \$99.95-H |



756-5504



756-5505



756-4010



756-4020



756-4012

AAEN GAUGES

Aaen Heavy Duty Exhaust Sender

756-5004

\$79.95-H

- Manufactured to their own specifications.
- Designed with a new tip for better probe life and more consistent reading.
- Improved wires to be more resistant to bending and twisting.
- Probe wires are spring wrapped at exhaust mount to absorb more vibration without breaking off.



Digital Voltage Meter

544-P10620

\$99.95-H

This compact voltage meter hooks up directly to your switch. Digital display shows you the voltage going to your ECU.



Battery Charge Kit

544-P10641

\$99.95-H

Your EFI is dependent on good voltage to function properly. If the voltage drops, the standard charging circuit will not be able to supply enough charge to keep the voltage up. The "Supercharge Kit" consists of an electronic box that senses low battery voltage, and then supplies additional charge from the separate accessory circuit.

THE PODD

| MODEL | HOLE | TCI # | RETAIL |
|---|------------------------|----------|-----------|
| A/C Prowler EXT '90-92 | 2-2" holes | 756-7003 | \$30.90-H |
| A/C ZRT 600/800, '95-'98, Thundercat '96-98, Powder Extreme '98 | 3-2" holes | 756-7002 | \$54.95-H |
| A/C ZR '93, EXT '94-97, Wildcat '95-96, Powder Special '95-97 | 2-2" holes | 756-7001 | \$54.95-H |
| Pol Indy's Original Style Hood | 3-2" holes | 756-7007 | \$54.95-H |
| Pol '96-97 Storm, XcR, 600SP, 970 Ultra Special, Ultra Touring | 3-2" holes | 756-7017 | \$55.75-H |
| Pol '97-99 With Larger Speedo & Tach | 2-2" holes | 756-7018 | \$55.75-H |
| | 3-2" holes | 756-7019 | \$55.75-H |
| Yam Exciter & Vmax 4 | 1-2" hole | 756-7011 | \$48.50-H |
| | 1-3" hole | 756-7012 | \$55.30-H |
| Yam Vmax '97-00 | 2-2" holes | 756-7020 | \$59.90-H |
| | 3-2" holes | 756-7021 | \$59.90-H |
| Yam Vmax 500/600/800 '92-96, Vmax 4 750/800 '92-97 | 2-2" holes | 756-7016 | \$47.50-H |
| Bullet Case - Handlebar Mounting | 2" Hole for 2" Gauge | 756-6002 | \$25.95-H |
| Cowl Swivel Bullet Mount Kit | Mounts to Flat Surface | 756-6004 | \$9.95-H |



756-7001



756-7011



756-7003



756-7016



756-7017



756-7018



756-7019



756-6002/4

2" Pod Kit for Pyro 2000

756-4052

\$48.50-H



Essentials
Performance
Windshield
Add-on
Skis & Runners
Tracks
Suspension
Clutch
Comet
Belts
Piston & Gasket
Engine
Electrical
Carb
Brakes
Cables
Chemical & Tools