

EKHOLM PADDLE



Serrated Paddles

- Molded paddle.
- Made of low temperature **Polyurethane**.

TCI PART#	DESCRIPTION	COLOR	RETAIL
916-5203	15" x 2"	Red	\$9.25-J
916-5204	15" x 2"	Purple	\$9.25-J
916-5209	15" x 2"	Black	\$9.25-J

Paddles sold without hardware.

Economy Paddles

- Serrated molded paddle.
- Not warranted against breakage.

TCI PART#	DESCRIPTION	COLOR	RETAIL
916-4203	15" X 2"	Pink	\$6.95-J
916-4204	15" X 2"	Magenta	\$6.95-J
916-4207	15" X 2"	Green	\$6.95-J

TRACTION PRODUCTS

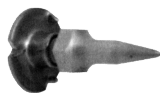
SIMMONS PREMIER CLEATS

- Maximum Traction - Designed to give even more traction, lift and yet be self-cleaning.
- Maximum Acceleration - Simmons Cleats are the only cleats that have "memory". Memory gives the cleats the ability to hold their shape under extreme acceleration, and flex if they come in contact with a rock or other objects, then immediately return to the original shape. Cleats without "memory" will lay flat or partially flat and not provide adequate traction.
 - Hill climbing is the ultimate test for traction & Simmons Cleats have won every major hill climb in the world.



Premier Competition Cleat 916-0330 \$369.99/pkg-G

- **6-7/8" LONG x 2" HIGH.** This new design is the ultimate competition traction device for hill climbing and deep snow. Every serious hill climber knows that Simmons is the best for quality and performance.
- Supplied with bolts, washers, and nuts for installation.
- Sold in packages of 30.



Ice Pick 916-4301 \$1.50-K ea.
 • For superior traction on hard packed snow.

TRACK CLEATS

ARCTIC CAT

Model and Year	OEM #	TCI #
Cheetah 1972	0102-025	917-0900
Cheetah 1973-78	0102-086	917-0920
Cross Country Cat 1976	0102-202	917-0921
El Tigre 1973	0102-034	917-0910
El Tigre 295 1974	0102-034	917-0910
El Tigre 1974-77 (exc 295)	0102-093	917-0930
El Tigre 5000 F/A 1978-80	0102-093	917-0930
EXT 1972	0102-034	917-0921
Jag 1975-81	0102-093	917-0930
Lynx 1971-72	0102-025	917-0900
Lynx 292/295/340 1974	0102-086	917-0920
Lynx 440-1974	0102-093	917-0930
Lynx 1975-76	0102-229	917-0930
Lynx 1977-79	0102-086	917-0920
Pantera 1975	0102-202	917-0921
Pantera 1976-79	0102-025	917-0900
Panther 1967-72	0102-086	917-0920
Panther 1973-79	0102-025	917-0910
Puma 1970-72	0102-093	917-0930
Trail Cat 1979-81	0102-086	917-0920



16 1/2" \$4.95-L
917-0900
OEM# 0102-025
Kmp# 04-090



14 1/2" \$3.95-L
917-0910
OEM# 0102-034
Kmp# 04-091



10" \$4.95-L
917-0930
OEM# 0102-093
Kmp# 04-093



11" \$4.95-L
917-0920
OEM# 0102-086
Kmp# 04-092



10 1/2" \$4.95-L
917-0921
OEM# 0102-202
Kmp# 04-092-01

JOHN DEERE

Model and Year	OEM #	TCI #
JD 295/S 1974	M66038	917-0970
JDX4 1975, JDX4 Special 1974	M66038	917-0970
JDX6 & JDX5 1974-75, JD 340/S 1975	M66038	917-0970
	M66755	917-0970
Cyclone 1976-78	M66038	
Liquifire 1976		



14 1/2" \$4.95-L
917-0970
OEM# M66038
Kmp# 04-097

POLARIS

Model and Year	OEM #	TCI #
All with 15" track 1970-71	5221425	917-0960
All with 15" track 1972-81	5221425	917-0960

14 5/8" \$4.95-L
917-0960
OEM# 5221425
Kmp# 04-096



SCORPION

Model and Year	OEM #	TCI #
Range Whip, Sting 1976-78	043952	917-0930
Sting 1979	043952	917-0930



10.0" \$4.95-L
917-0930
OEM# 043952
Kmp# 04-093

YAMAHA

SRX 1976-77	ACC-11250-2608	917-0890
-------------	----------------	----------

14 5/8" \$4.95-L
917-0890
OEM#
ACC-11250-26 08
Kmp# 04-089



PADDLE HARDWARE



Allen Key Mounting Hardware

916-1261

\$39.99-H

- Deluxe Mounting Hardware 56/Pkg

NUTS



915-4010

T-Nuts

- The general purpose fastener for mounting traction studs.
- Also used to replace damaged T-nuts.
- Standard barrel length is 1/4 inch.
- Also available in short length, 3/16 inch, for racing tracks and thin tracks.
- The extra-large diameter has a larger area of support and is used for securing aggressive traction products.

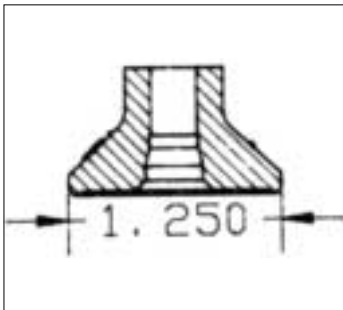


915-4080



915-4020

TCI PART#	DESCRIPTION	PKG. QTY	RETAIL
915-4010	Regular .750" base, .250 length Cdn. Made	48/PKG	\$9.90-J
915-4000	Short .750" base, .1875 length USA Made	96/PKG.	\$27.25-H
915-4020	OBX obround 1"x.750" base, .250" length	96/PKG.	\$59.85-H
915-4080	PBX obround 1" x .750" basee, .5625" length	48/pkg	\$58.95-H



Ultra Lites

- Unique one piece design takes the place of traditional backing plate and nut
- Self-tapping
- 1/6th the weight of steel - 1/3rd the weight of aluminum.
- Made from a special nylon composite for superior strength.
- Weight saving of approximately 5-7 pounds!



TCI PART#	THREAD SIZE	COLOUR	PKG.QTY	RETAIL
915-7100	.250" (1/4")	White	24/PKG.	\$17.99-G
915-7222	7mm	Orange	24/PKG	\$17.99-G
915-7233	7mm	Red	24/PKG	\$17.99-G
915-7244	7mm	Purple	24/PKG.	\$17.99-G
915-7255	7mm	Blue	24/PKG.	\$17.99-G
915-7299	7mm	Black	24/PKG.	\$17.99-G
915-7311	.3125" (5/16"	Yellow	24/PKG	\$17.99-G
915-7322	.3125" (5/16"	Orange	24/PKG	\$17.99-G
915-7344	.3125" (5/16"	Purple	24/PKG	\$17.99-G
915-7355	.3125" (5/16"	Blue	24/PKG.	\$17.99-G
915-7399	.3125" (5/16"	Black	24/PKG.	\$17.99-G

CARBIDE INSERTS



Solder Kit

909-9364

\$18.95-H

- Roetin uses a proprietary silver solder and a special superactive flux in their carbide runners.
- This is the silver solder and flux recommended by carbide manufacturers.
- The kit contains enough silver solder and flux to install about 10 pieces of carbide.

TRACK BOLTS

Bolt & Lock Nuts (For Cleats & Studs)

- Specially designed, flat headed to allow steel bolts to hold firmly to track.
- Locking nut has star washer permanently affixed.
- No fumbling. May be used for rivet replacement.



917-0123

TCI #	DESCRIPTION	PKG. QTY.	KMP#	RETAIL
917-0123	3/16" Nut & Bolt	100/PKG.	14-123	\$21.90-J
917-0125	1/4" Nut & Bolt	50/PKG.	14-125	\$25.50-H
917-0126	Solid Rivet Arctic Cat OEM #0123-729 Polaris OEM #7261423 Yamaha OEM #ACC-112550-19-00	Each	04-008	\$0.35-L
917-0127	Solid Rivet -h.d.	Each	04-008-01	\$0.70-L
917-0128	Rivet Moto-Ski OEM #390.9026.00	Each	04-009	\$0.30-L



917-0125



917-0126

TRACK STRAINER BAR

TRACK STRAINER BAR

917-0880

\$1.20-L

- Kmp# 04-151-02
- Sno Jet# 060039
1968-74 All Models

STUDS

Trail Stud

914-0100

\$36.50-H

- Package of 24 studs, bolts, and lock nuts
- The best all-around trail stud
- Ice, hard and soft pack snow
- Acceleration, cornering, and braking
- 1" square with four prong .750" bite. Uses .250" bolt and nut



Multipurpose Stud

914-0102

\$6.90-K

- Package of 10 studs, bolts, and lock nuts
- The best all-around cleated track stud on ice, hard and soft packed snow
- Acceleration, cornering, and braking
- Performs better under non-packing conditions
- .750" x .625" with four prong .625" bite. Uses .187" bolt and nut

Ram Set Studs

914-0400

\$59.99-H

- Recommended for the ultimate traction on ice. Overall length is 1.50" with .750" prong tip and .750" thread length. Install on cleated tracks or rubber tracks by using backer plates



Roetin

Move up to Roetin Quality.

Look in the mirror.

Determine your riding style. Touring, trail riding, high performance or extreme? Different levels of action require different degrees of traction.



Do a little arithmetic.

Insert the size of your engine (in cc's) and the Roetin Traction Factor of your runners into the equation. The result will be the approximate number of studs you should use. For proper traction balance, round up or down to the nearest number divisible by 24 (96, 120, 144, 168, 192, 216, etc.).

Pick your picks.

Steel studs are sharper and less expensive than carbide. But carbide studs are highly recommended because they wear longer. Screw-in studs are usually easier and less expensive to replace. Push-through studs, while a bit more expensive, are very popular because they are easy to install. Ask TCI for assistance in choosing the right Roetin stud for your sled and riding style.

Pattern for success.

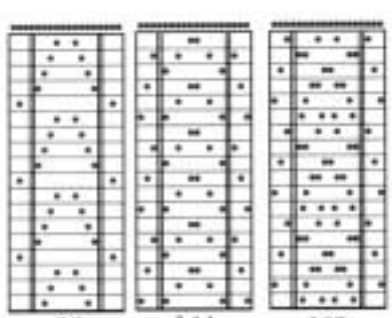
Use a basic 'V' design. Take the time to lay out the pattern to keep the studs balanced and avoid repeating scratch lines. Keep studs at least one inch away from track edge. Consult with TCI about tunnel protectors or heat exchanger guards that may be required for your particular sled.

Traction Factor

ROETIN

Engine cc. x T.F. = Number of Studs

10



96
144
192

TF	Riding Style
2	TOURING Casual riding moderate speeds, good snow and terrain.
2.2	TRAIL Hard-charging, fast speeds, varying terrain.
3	PERFORMANCE Aggressive riding, some informal racing, icy trails and lakes.
3.1	
3.6	EXTREME Highly skilled, high speeds, difficult terrain.



Carbide Wedge -Lites (CW)

- The ROETIN Wedge is the most durable stud available for extra penetration on ice and hard pack. Large triangular carbide point gives a sharp, durable edge. Narrow profile reduces weight by up to 23% (Includes T-Nut & Square washer)



TCI PART#	LENGTH	PKG. QTY.	RETAIL
914-5750	.750"	24/PKG.	\$85.95-H
914-5875	.875"	24/PKG.	\$85.95-H

Carbide Penetrators (CP)

- ROETIN heavy duty carbide tipped studs provide good penetration and durability.



TCI PART#	LENGTH	PKG. QTY.	RETAIL
914-1625	.625"	24/PKG.	\$58.95-H
914-1700	.688"	24/PKG.	\$58.95-H
914-1750	.750"	24/PKG.	\$58.95-H
914-1875	.875" (Pick only)	48/PKG.	\$89.95-H

Original Black Daggers - Steel (XSP)

- The thinnest profile manufactured
- Provides incredible penetration
- Guaranteed not to break



TCI PART#	LENGTH	PKG. QTY.	RETAIL
914-7700	.688"	96/PKG.	\$137.95-H
914-7875	.875"	96/PKG.	\$137.95-H

Black Daigger Carbide Headers (HDC)

TCI PART#	DESCRIPTION	PKG. QTY.	RETAIL
914-9875	.875" (With Washers) 1/4" thread	24/PKG.	\$89.95-H
914-9100	1.00" (No Washers) 1/4" thread	24/PKG.	\$89.95-H



Black Dagger Headers (HDX)

914-8100 \$73.18-M

- 1"
- 24/ pkg

914-8100

TRACTION PICKS

ACS Penetrator

- The ACS Super sharp hardened steel stud, gives better penetration than carbide, but will not last as long. Designed for both trail and track. It is the legal length for oval racing on rubber track.



TCI PART#	DESCRIPTION	PKG. QTY.	RETAIL
914-2100	1"	48/PKG.	\$50.75-H
914-2140	1.040"	48/PKG.	\$50.75-H
914-2700	0.750"	48/PKG.	\$50.75-H

ACS PENETRATOR with WASHERS

914-2750	.750"	48/PKG.	\$61.90-H
914-2850	.875"	48/PKG.	\$61.90-H

TRACTION PICKS

ACS Carbide Push Through Studs



- Carbide push through studs with nuts - 7mm thread & 7/8" head. Overcomes torque loads

TCI PART#	DESCRIPTION	THREAD	PKG. QTY.	RETAIL
914-3850	.850"	7mm	48/PKG.	\$125.50-H
914-3100	.9375"	7mm	96/PKG.	\$239.25-H
914-3131	1.3125"	7mm	96/PKG.	\$239.25-H

Roetin APX Carbide Studs



- Sharp apex design delivers superior penetration, sharp enough to go racing. Flat blade design provides the durability of a wedge, that can be oriented for directional results.
- The APX SYSTEM can reduce your traction weight by over 40%. By using the APX Traction Control System you can reduce your traction studs by 20-25%.
- Only available in 1/4 x 20 thread and are sold with the new OBX washer.

TCI PART#	DESCRIPTION	PKG. QTY.	RETAIL
914-4750	.750"	24/PKG.	\$105.00-H
914-4875	.875"	24/PKG.	\$105.00-H
914-4100	1"	24/PKG.	\$105.00-H

WASHERS & BACKER PLATES

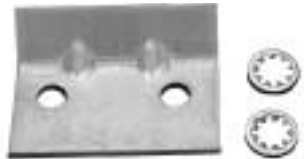
Roetin OBX Washers



- Thinner and lighter, the exclusive "obround shape" can be installed in two different directions to increase/decrease track rigidity.
- The lower dome height increases contact with the track and spreads pressure more evenly over a larger contact surface, this helps to reduce wear and tear on the track.
- Due to lower profile, order studs 1/8" longer than you would normally use with standard domed washers.

TCI PART#	DESCRIPTION	PKG. QTY.	RETAIL
915-6010	RBX WaShers - round	96/PKG.	\$79.95-H
915-6020	OBX Washers - obround	96/PKG.	\$75.50-H

Aluminum Angle Plates



- Reduce your traction weight and, also, with the angled design, add support to your traction by nestling up against the rib of the track.

TCI PART#	DESCRIPTION	PKG. QTY.	RETAIL
915-6520	Aluminum Angle Plates 2 hole	12/PKG.	\$24.50-H
915-6510	Aluminum Angle Plates 1 hole	12/PKG.	\$19.95-H

Steel Backer Plates (washers)

- Pre-drilled aluminum plate, designed to give added support and added height to studs mounted on rubber tracks.

915-6330



915-6320

TCI PART#	DESCRIPTION	HOLE	WASHER SIZE	PKG. QTY.	RETAIL
915-6320	Round (ACS)	.250"	1.125"	96/PKG.	\$34.55-H
915-6330	Rectangular (ACS).	250"	.750" x 1.625"	20/PKG.	\$11.00-J

Aluminum Washers

- Reduce traction weight. made of the highest quality aluminum.
- Domed design adds strength making it possible to tighten them up more than the flat style.

TCI PART#	DESCRIPTION	HOLE	WASHER SIZE	PKG QTY.	RETAIL
915-6110	Pressed (Roetin)	.250"	1.250"	96/pkg	\$79.25-H
915-6120	Round Milled (ACS)	.250"	1.250"	20/pkg	\$12.25-J
915-6130	Round (ACS)	7mm	1.250"	96/pkg	\$12.25-J



915-6130

915-6120

TRACK ADJUSTER BLOCK

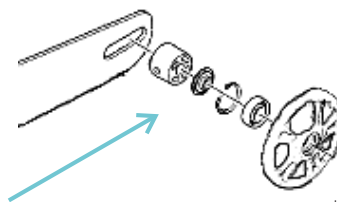
Arctic Cat Track Adjuster Block

929-6015

\$29.95-H

Aluminum Arctic Cat track adjuster blocks. Designed for aggressive riding. Replaces the stock nylon adjuster block which will break on heavy landings.

- 47.2OD x 11.1 ID x 40.6 (H)
- Fits All Arctic Cat Models 1989 - present



929-6015

Lite Weight Track Adjuster Blocks

- 8-Shooter Spacer
- Mtn machine is Drilled with "shooter" holes to keep the weight down.

\$69.95-F



Mtn Machine Spacer

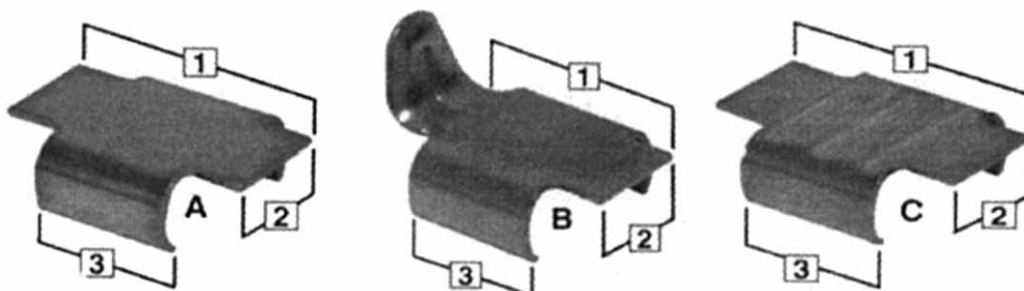
DESCRIPTION

All Model up to 1989- 2002 (OEM #0604-936)
2003 and 2004

PART #

757-1111
757-1112

TRACK CLIP/GUIDES



Pic Part #	TCI Part #	Kimpex Part #	Size (mm)			Description	Application
			1	2	3		
E	917-2001	04-147				Track Guide	A/C 0102-005, Polaris 5221448, Yamaha 878-47119-01-00
D	917-2002	04-148				Clip - Narrow	Bombardier 570.0003.00
D	917-2003	04-150-06				"L" Clip - Narrow	Bombardier 500.0022.00
A	917-2005	04-149-04	51.19	22.22	27.97	Clip - Wide	Moto Ski 570.0051.00 use 500.0030.00
D	917-2007	04-149-06	37.08	28.40	37.08	Clip - Wide	Bombardier 500.0032.00, A/C (all models 90-95)
A	917-2010	04-150-01	50.38	20.45	30.24	Clip - Narrow	Bombardier 570.0031.00
D	917-2011	04-150-03				Clip - Wide	Rupp and All Rubber molded tracks (wide hole on thin bar tracks)
B	917-2012	04-150-08	39.00	26.50	39.00	"L" Clip - Wide - New Style	A/C 0102-255, Polaris 5222109, Yamaha 8A5.47115.00, 8G9.47115.00
B	917-2013	04-150-05/14	38.15	28.70	38.15	"L" Clip - Wide	John Deere M67013, Kawasaki/Sno-Jet 060658 use 060694, Polaris 5220015
B	917-2014	04-150	39.90	22.76	20.50	"L" Clip - Narrow	Bombardier 414.6434.00, 500.0016.00 use 500.0031.00
B	917-2015	04-150-07	42.42	22.88	38.33	"L" Clip - Wide	Bombardier 414.6435.00, 500.0028.00, 570.0044.00 use 500.0027.00
D	917-2016	04-149-08	37.08	28.40	37.08	Clip - Wide	Alouette (All center drive Bogie models), Yamaha
B	917-2020		25	20	37		Camoplast Tracks
C	917-2022	04-150-11	47.2	19	25.5	Clip - Wave	Camoplast / Bombardier 504.1518.28 (replacement for 04-150-09)
A	917-2023		37	19	47		Polaris 5241473 / Yamaha 8CP-47113-00
B	917-2024	04-150-10	42.1	19.21	37.08	"L" Clip - Wide	Camoplast "L" Clip Wide Style
A	917-2025	04-150-12			37.08	Clip - Wide	Camoplast Flat Wide style



917-2001 \$1.00-L
Track Guide 04-147
A/C 0102-005



917-2002 \$1.00-L
Track Clip-Narrow 04-148
BRP# 570.0003.00



917-2003 \$1.75-L
L-Clip - Narrow 04-150-06
BRP# 500.0022.00

TRACK CLIPS



04-147 Cleated Track Guide \$2.50-J
 Arctic Cat OEM 0102-005
 Polaris 5221448
 Yamaha 878-47119-01-00
 65 L x 18.4 W x 3.2 mm



04-148 Wide Track Clip \$1.25-J
 BRP 570.0003.00
 19.2 L x 21.4 W x 19.2 mm



04-149-04 Wide Track Clip \$1.75-J
 BRP OEM 500.0030.00, 500.0032.00
 570.0051.00, 570.0108.00
 51.19 L x 22.22 W x 27.97 mm



04-149-06 Wide Track Clip \$1.75-J
 37.08 L x 27.4 W x 37.08 mm



04-149-08 Wide Track Clip \$0.95-J
 Yamaha OEM 89A-47113-00



04-150 Narrow "L" Clip \$1.95-J
 BRP OEM 414.6434.00, 500.001600
 500.0031.00
 39.9 L x 22.76 W x 20.5 mm



04-150-03 Wide Track Clip \$1.50-J
 Fits wide hole / thin bar tracks
 Found on older snowmobiles - all models with
 rubber molded track.



04-150-04 Wide "L" Clip \$1.95-J
 Arctic Cat OEM 0102-255 / Polaris 5222109
 BRP 500.0030.00, 500.0032.00
 570.0051.00, 570.0108.00
 Yamaha 8A5-47115-00-00, 8G9-47115-00-00



04-150-05 Wide "L" Clip \$2.25-J
 John Deere OEM M67013 / Polaris 5220015
 Kawasaki 060658, 060694
 Yamaha 8A5-47115-00-00
 38.15 L x 28.7 W x 38.15 mm



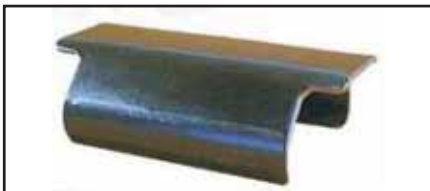
04-150-06 Narrow "L" Guide \$1.95-J
 BRP OEM 500.0022.00
 1 1/4" L x 1 3/4" W



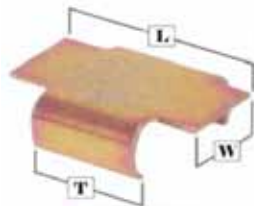
04-150-07 Wide "L" Clip \$1.95-J
 BRP OEM 414.6435.00, 500.0027.00
 500.0028.00, 570.0044.00
 42.42 L x 22.88 W x 38.33 mm



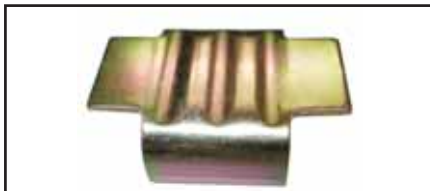
04-150-10 Wide "L" Clip \$1.95-J
 Camoplast "L" Clip - 1.46" wide hole style
 42.1 L x 19.21 W x 37.08 mm



04-150-12 Wide Track Clip \$1.95-J
 Camoplast Flat Wide Style
 Arctic Cat OEM 0602-816 / Polaris 5241473
 BRP 500.030.00, 500.032.00, 570.0108.00,
 570.051.00 / Yamaha 8CP-47113-00-00
 1 3/4" L x 1 1/2" W x 3/4"



04-150-16 "L" Clip \$1.95-J
 Standard Camoplast "L" Clip Style
 BRP OEM 500.027.00
 25 L x 20 W x 37 mm



04-150-37 Camoplast Wave Clip \$2.95-J
 BRP 504.151.828
 47.2 L x 19 W x 25.5 mm



04-150-38 Wide Track Clip \$1.75-J
 Polaris OEM 5241473
 Yamaha 8CP-47113-00
 57 L x 19 W x 47 mm

TRACK CLIPS

MAKE	YEAR	STYLE	REGULAR	"L" CLIP
ALOUETTE				
Brute 340, 440	1976		04-150-03	
ARCTIC CAT				
OEM 0602-448				04-150-10
OEM 0602-819			04-150-38	
1" wide hole style Camoplast (except OE Firecat track)				04-150-16
1.46" wide hole style Camoplast			04-150-12	04-150-10
Cheetah	72	Guide	04-147	
Cheetah	86-88	Wide	04-149-06	04-150-04
Cheetah 340, 440, 550	94	Wide	04-149-06	04-150-04
Cheetah Touring	88-93	Wide	04-149-06	04-150-04
Cougar	68	Guide	04-147	
Cougar	85-92	Wide	04-149-06	04-150-04
El Tigre EXT	73-74	Guide	04-147	
El Tigre EXT	89-92	Wide	04-149-06	04-150-04
El Tigre L/C	78-88	Wide	04-149-06	04-150-04
EXT	71-72	Guide	04-147	
EXT 550, EFI	93	Wide	04-149-06	04-150-04
Jag	85-92	Wide	04-149-06	04-150-04
Jag 440 Z	93	Wide	04-149-06	04-150-04
Jag AFS (All)	89-93	Wide	04-149-06	04-150-04
Jag, Deluxe	88-92	Wide	04-149-06	04-150-04
King Kat	71	Guide	04-147	
Lynx	71-72/74	Guide	04-147	
Lynx, Deluxe	91-93	Wide	04-149-06	04-150-04
Pantera	80-92	Wide	04-149-06	04-150-04
Panther	67-72	Guide	04-147	
Panther (All)	80-93	Wide	04-149-06	04-150-04
Prowler	90-93	Wide	04-149-06	04-150-04
Puma	70-72	Guide	04-147	
Super Jag	88-92	Wide	04-149-06	04-150-04
Wildcat 650	88-92	Wide	04-149-06	04-150-04
CAMOPLAST				
1" wide hole style *except some OE Arctic Cat				04-150-16
1.46" wide hole style Camoplast			04-150-12	04-150-10
DuraSport 9753T, 9781T, 9783T, 9791T, 9792T, 9796T, 9863T			04-150-37	
Finger Tracks 9871M, 9872M			04-150-37	
Predator Tracks 9833H, 9834H, 9837H, 9838H, 9878H			04-150-37	
Utility Track 9806U			04-150-37	
JOHN DEERE				
Liquifire	78/80-84	Wide	04-149-06	04-150-05
Sportfire	82-84	Wide	04-149-06	04-150-05
KAWASAKI / SNO JET				
Astro	77	Wide	04-149-06	04-150-05
Intriguer, Inviter	78	Wide	04-149-06	04-150-05
SST	77	Wide	04-149-06	04-150-05
KIMPEX TRACKS				
04-001, 04-004		Guide	04-147	
04-525, 04-526, 04-528		Wide	04-149-04	04-150-05
04-529, 04-531, 04-532		Narrow	04-150-15	04-150
04-529, 04-531, 04-532		Wide	04-149-04	04-150-07

MAKE	YEAR	STYLE	REGULAR	"L" CLIP
KIMPEX TRACKS				
04-533, 04-534		Wide	04-149-04	04-150-07
04-535		Narrow		04-150-06
04-537		Wide	04-149-04	04-150-07
04-543, 04-544		Wide	04-149-06	04-150-05
04-620, 04-625, 04-630		Wide		04-150-03
04-640, 04-650		Wide	04-149-06	04-150-03
04-750, 04-752, 04-759		Wide	04-149-06	04-150-05
04-760, 04-761, 04-762		Wide	04-149-06	04-150-05
04-763, 04-764, 04-768		Wide	04-149-06	04-150-05
04-784, 04-785, 04-787		Wide	04-149-06	04-150-05
04-788, 04-790, 04-793		Wide	04-149-06	04-150-05
04-795, 04-854K		Wide	04-149-06	04-150-05
MOTO-SKI				
Futura	76-82	Wide	04-149-04	
Grand Prix Special	79-81	Narrow	04-150-15	04-150
Mirage	79-83/85	Narrow	04-150-15	04-150
Nuvik	75-79	Wide	04-149-04	
Sonic	76-81/84	Narrow	04-150-15	04-150
Sonic	82	Wide	04-149-04	
Ultra Sonic	76-78	Narrow	04-150-15	04-150
Ultra Sonic	80-81	Narrow	04-150-15	04-150
Ultra Sonic	82	Wide	04-149-04	04-150-07
POLARIS				
All Models OEM 5241473			04-150-38	
1" wide hole style Camoplast				04-150-16
1.46" wide hole style Camoplast			04-150-12	04-150-10
Centurion	79-82	Wide	04-149-06	04-150-05
Colt	72-73	Guide	04-147	
Cross Country	83	Wide	04-149-06	04-150-05
Cutlass (all)	81-85	Wide	04-149-06	04-150-05
Galaxy (rubber cleat)	80-81	Wide	04-149-06	04-150-05
Gemini	83	Wide	04-149-06	04-150-05
Indy (All)	83	Wide	04-149-06	04-150-05
Indy (All)	85-00	Wide	04-149-06	04-150-05
Indy 340	80-82	Wide	04-149-06	04-150-05
Indy 500	81-82	Wide	04-149-06	04-150-05
Long Track	83	Wide	04-149-06	04-150-05
RXL 650	88-92	Wide	04-149-06	04-150-05
Sport	83	Wide	04-149-06	04-150-05
Sprint, ES	86-95	Wide	04-149-06	04-150-05
SS	83/85-86	Wide	04-149-06	04-150-05
Star	83-92	Wide	04-149-06	04-150-05
Star Trak	87	Wide	04-149-06	04-150-05
Starlite	83-92	Wide	04-149-06	04-150-05
Starlite, GT	93	Wide	04-149-06	04-150-05
Supertrak	88-92	Wide	04-149-06	04-150-05
TX Racer	72	Guide	04-147	
TX-C	80-82	Wide	04-149-06	04-150-05
TX-L, TX-L Indy	77-82	Wide	04-149-06	04-150-05
Widetrack	88-93	Wide	04-149-06	04-150-05
XLT 580	93	Wide	04-149-06	04-150-05
RUPP				
All Models			04-150-03	

TRACK CLIPS

MAKE	YEAR	STYLE	REGULAR	"L" CLIP
SKI-DOO				
1" wide hole style Camoplast				04-150-16
1.46" wide hole style Camoplast			04-150-12	04-150-10
Alpine	65-87	Wide	04-148	
Alpine	88-95	Wide	04-149-06	04-150-07
Alpine II	88-92	Wide	04-149-04	04-150-07
Alpine IV	91	Wide	04-149-04	04-150-07
Blizzard	78-81	Narrow	04-150-15	04-150
Blizzard	82-84	Wide	04-149-04	04-150-05
Cheyenne	89-91	Wide	04-149-04	04-150-07
Citation	78-84	Narrow	04-150-15	04-150
Citation	85-91	Narrow		04-150-06
Elan	71-96	Wide	04-148	
Elan 250 Deluxe	78	Narrow	04-150-15	04-150
Elite	78-82	Wide	04-149-04	04-150-05
Escapade	87-89	Wide	04-149-04	04-150-05
Everest	74/77-83	Wide	04-149-04	04-150-05
Formula Mach 1, XTC	89-92	Wide	04-149-04	04-150-07
Formula Series	85-88	Narrow	04-150-15	04-150
Formula MX/MX LT/ MX XTC	89-92	Wide	04-149-04	04-150-07
Formula Plus, LT	89-92	Wide	04-149-04	04-150-07
Formula SS	85	Narrow	04-150-15	04-150
Nordik	81-82	Narrow	04-150-15	04-150
Nordik	82-83	Wide	04-149-04	04-150-05
Olympique	65-78	Wide	04-148	
Olympique	75-79	Wide	04-149-04	04-150-05
RV 340	76-79	Narrow	04-150-15	04-150
Safari 377 (Narrow)	84-86	Narrow	04-150-15	04-150
Safari (Narrow)	89-91	Narrow		04-150-06
Safari	84-88	Wide	04-149-04	04-150-05
Safari, Rally, Deluxe, L	89-94	Wide	04-149-06	04-150-07
Safari	94-96	Wide	04-149-06	04-150-05
Saga	89-90	Wide	04-149-04	04-150-07
Scout	89-92	Wide	04-149-04	04-150-07
Skandic	82	Narrow	04-150-15	04-150
Skandic	82-87	Wide	04-149-04	04-150-05
Skandic	93-96	Wide	04-149-04	04-150-07
SS-25	84	Narrow	04-150-15	04-150
Stratos	87-88	Wide	04-149-04	04-150-05
TNT	73-75	Narrow	04-150-15	04-150
TNT	74-76	Wide	04-149-04	04-150-05
TNT F/A	76-78	Narrow	04-150-15	04-150
TNT F/C 440	77-80	Narrow	04-150-15	04-150
Tundra	85-89	Wide	04-149-04	04-150-05
Tundra, LT	89-96	Wide	04-149-04	04-150-07
Voyageur	89	Wide	04-149-04	04-150-07
SKIROULE				
All Models	69	Narrow	04-150-15	
Laser	74/76	Narrow	04-150-15	
R / RE / RS / RT / RTX / RTW	70-74	Narrow	04-150-15	
S / SE	70-72	Narrow	04-150-15	
Sonar	75	Narrow	04-150-15	
Sprint	76	Narrow	04-150-15	
SRX / SX	70	Narrow	04-150-15	
Ultra	75-76	Narrow	04-150-15	

MAKE	YEAR	STYLE	REGULAR	"L" CLIP
YAMAHA				
All Models Yokohama	94-00	Wide	04-149-06	04-150-05
All Models OEM 8CP-47113-00			04-150-38	
1" wide hole style Camoplast				04-150-16
1.46" wide hole style Camoplast			04-150-12	04-150-10
BR 250	82-95	Wide	04-149-06	04-150-05
CF 300	86-89	Wide	04-149-06	04-150-05
CS 340	89-95	Wide	04-149-06	04-150-05
EC 240	79-80	Wide	04-149-06	04-150-05
EC 340	79-88	Wide	04-149-06	04-150-05
Enticer 250	79-81/84-92	Wide	04-149-06	04-150-05
Enticer 300	79-84	Wide	04-149-06	04-150-05
Enticer 340	77-91	Wide	04-149-06	04-150-05
Enticer 340T	82-86	Wide	04-149-06	04-150-05
Enticer 410	79/84-92	Wide	04-149-06	04-150-05
Enticer	94	Wide	04-149-06	04-150-05
EW 433, 643 (tor-con)	72-73	Wide	04-149-08	
Exciter	76-93	Wide	04-149-06	04-150-05
Excel (All)	78-88	Wide	04-149-06	04-150-05
GP	75-76	Narrow	04-150-15	04-150
GPX	74	Guide	04-147	
GPX	75	Narrow	04-150-15	04-150
GS	76	Narrow	04-150-15	04-150
Inviter	86-91	Wide	04-149-06	04-150-05
Ovation, LE	89-91/93	Wide	04-149-06	04-150-05
Phazer	84-99	Wide	04-149-06	04-150-05
PR	76	Narrow	04-150-15	04-150
SL	68-74	Wide	04-149-08	
SM 292	73-74	Wide	04-149-08	
SR	71-74	Wide	04-149-08	
SR 540	80-92	Wide	04-149-06	04-150-05
SR 540	91	Wide	04-149-06	04-150-05
SRV	80-87	Wide	04-149-06	04-150-05
SRX	78-81	Wide	04-149-06	04-150-05
SS 396	70-71	Wide	04-149-08	
SS 440	80-86	Wide	04-149-06	04-150-05
STX 440	77	Wide	04-149-06	04-150-05
SV 125	91-92	Wide	04-149-06	04-150-05
SW 396	71	Wide	04-149-08	
SW 433	71-73	Wide	04-149-08	
TL	75	Narrow	04-150-15	04-150
TW 433 (tor-con)	74	Wide	04-149-08	
Venture	91-94	Wide	04-149-06	04-150-05
VK 540 (Viking)	88-98	Wide	04-149-06	04-150-05
V-Max 4 500, 600	83-86/94	Wide	04-149-06	04-150-05
V-Max	89	Wide	04-149-06	04-150-05
V-Max 540	82-92	Wide	04-149-06	04-150-05
VT 480	91-99	Wide	04-149-06	04-150-05
VX 500, 600	94-99	Wide	04-149-06	04-150-05
XL 540	85-89	Wide	04-149-06	04-150-05

